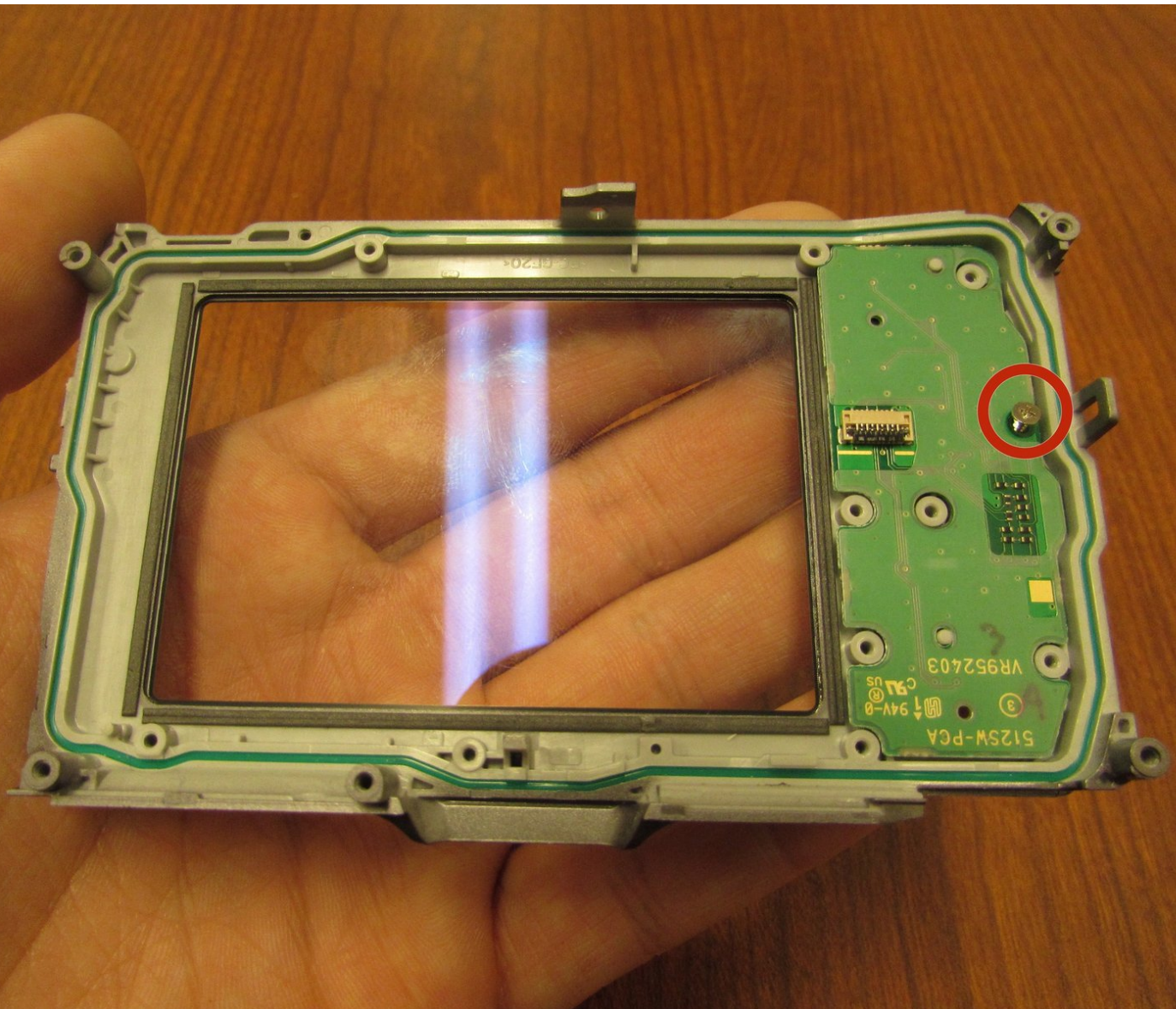




Olympus Tough TG-1 Circuit Board For Back Buttons Replacement

This guide will be replacing the circuit board behind the back plate of the camera.

Written By: Andrew Feliciano

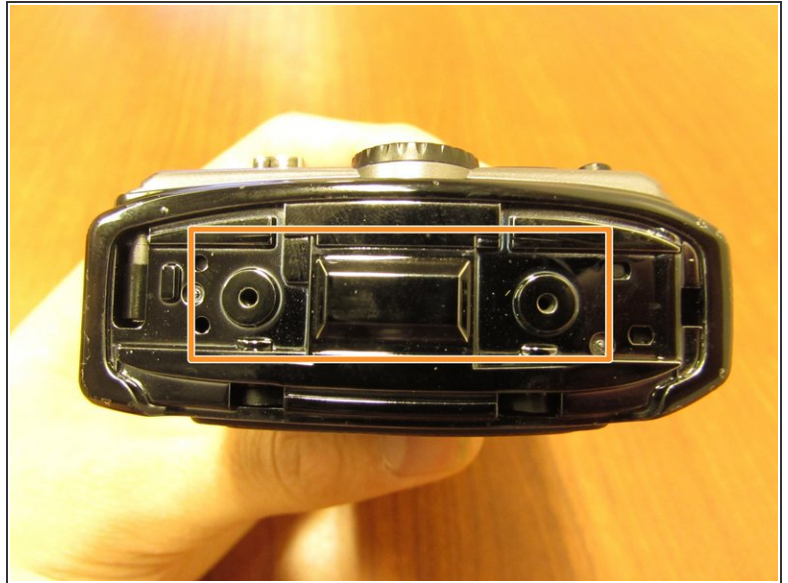




TOOLS:

- [64 Bit Driver Kit](#) (1)
 - [iFixit Opening Tools](#) (1)
-

Step 1 — Clip Side Repair



- Remove both 6 mm screws from the clip side of the camera.
 - After you have removed the two screws, remove both the clip and the plate behind the clip so that the inside of the camera is exposed.
- i** If one or more of the clips appear to be broken, the back plate might need to be replaced.

Step 2 — Top of Camera



- The top of the camera does not contain screws. You do not need to remove anything from the top of the camera.

Step 3 — Plug Side



- Remove the two 5 mm screws on the side of the camera with the plug.
- Open the compartment door and remove both 6 mm screws inside of the compartment door. This will allow you to remove the tan piece held by the screws.

Step 4 — Bottom



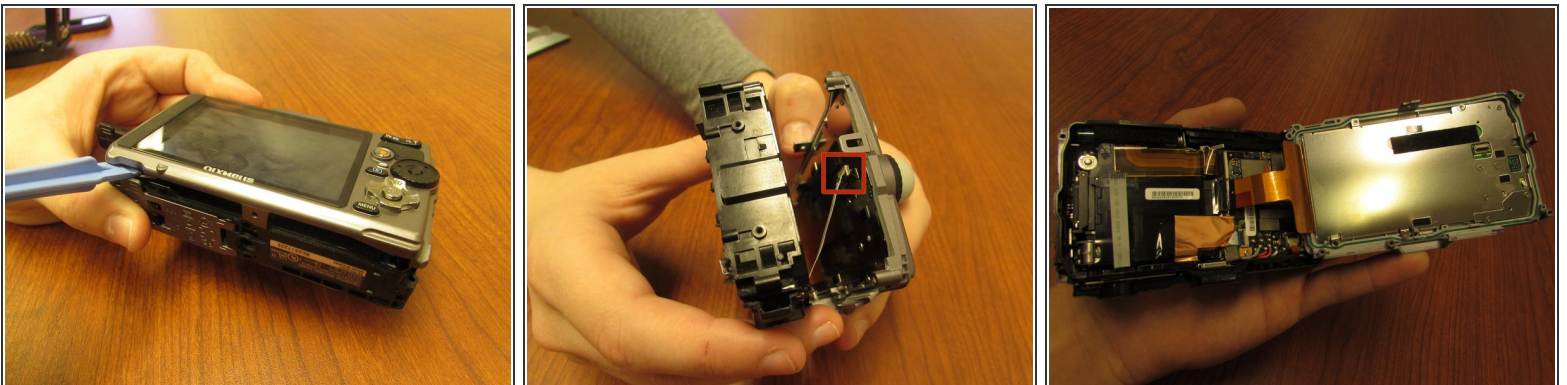
- Turn the camera so that you are looking at the bottom of the camera.
- Remove the two 4 mm screws from the bottom of the camera.
- i* The screws are different. The rear screw is has an unthreaded shank to locate the outer shell while screwing into the inner frame.

Step 5 — Front Panel



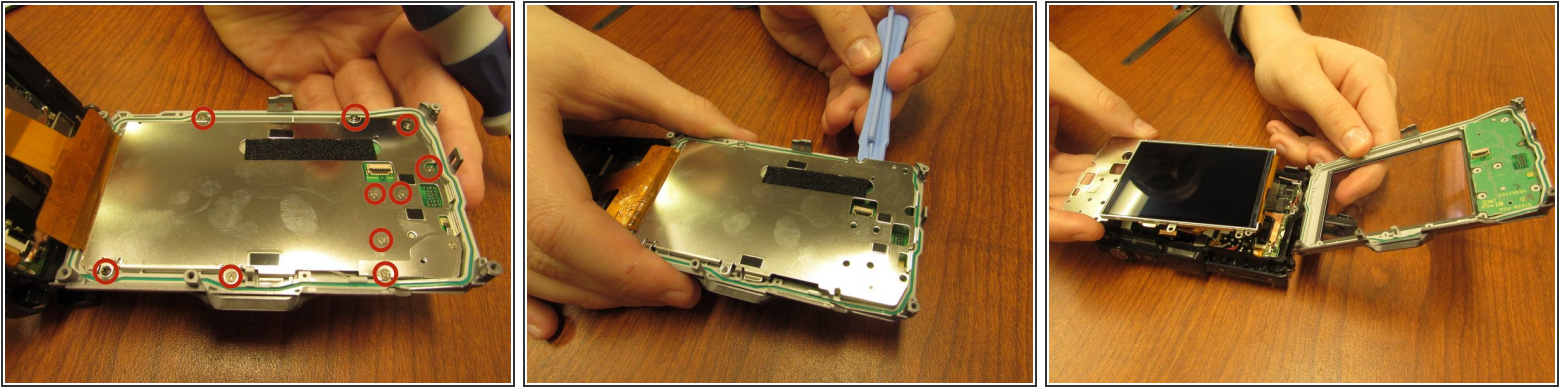
- Use the plastic opening tool to remove both components of the front panel. This includes the black part on the outside of the front panel and the main silver panel.
- ⓘ Once every screw and panel is removed, you can replace the backplate to make your camera weatherproof again.

Step 6 — Opening the Internal Case



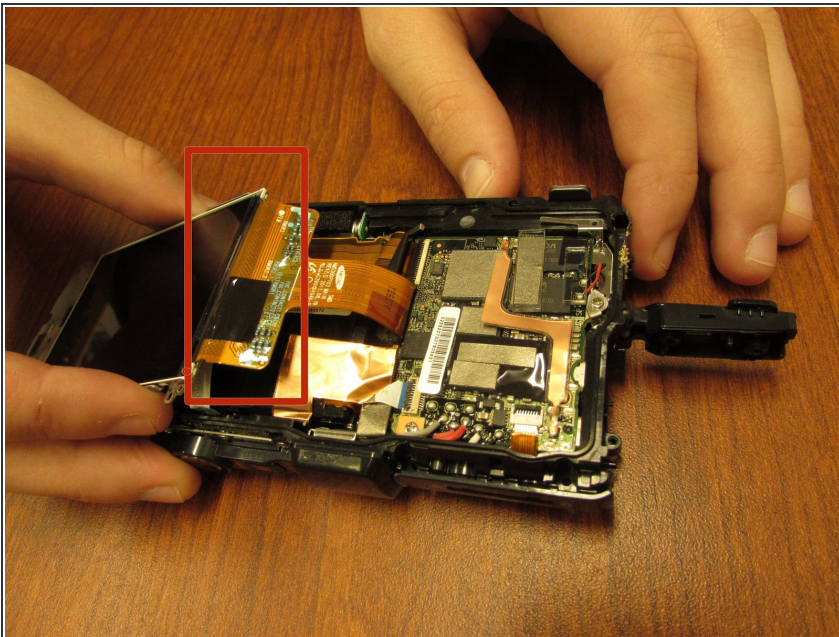
- Using the plastic opening tools, carefully open the case.
- ⚠ Do not tear the white circuit ribbon.

Step 7 — Opening the Screen's Protective Cover



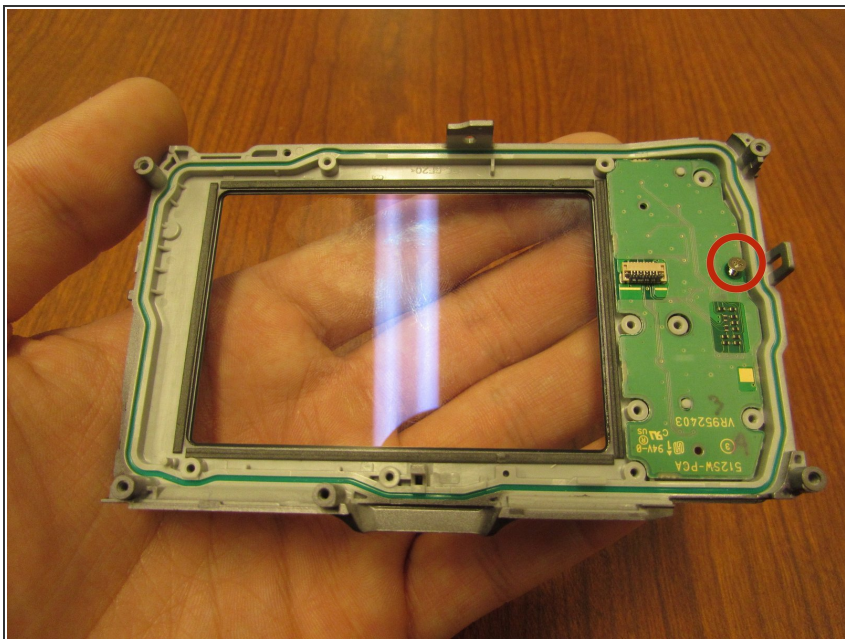
- Using the screwdriver, remove the ten 3mm anchor screws.
- Using the plastic opening tool, open the protective cover so that the screen is exposed.

Step 8 — Unclipping the Screen from the Circuit Ribbon



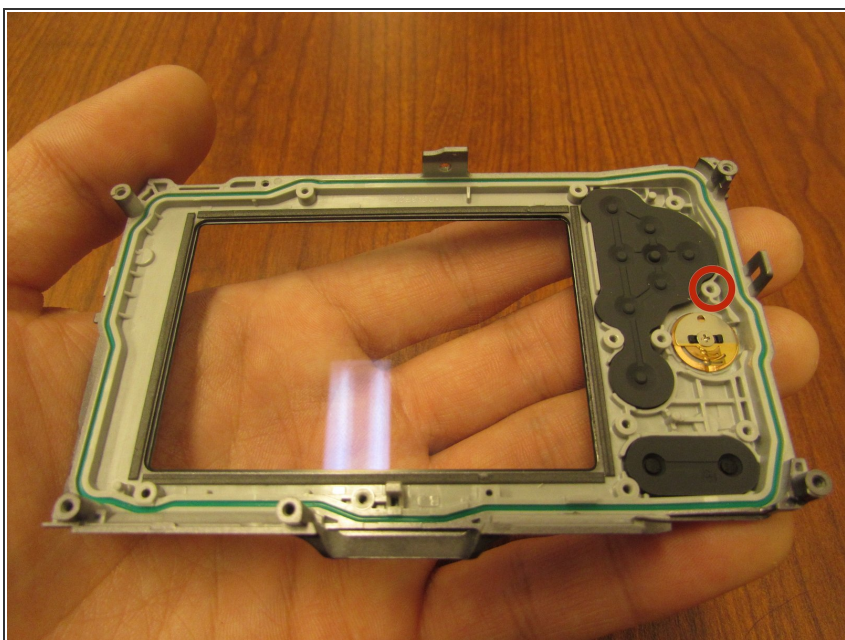
- Carefully unclip the screen from its circuit ribbon.

Step 9 — Circuit Board For Back Buttons



- After removing this plastic casing from the screen, the only thing holding the circuit board to the plate is a screw 3 mm in length, with a diameter of 2.5 mm. Remove this screw.

Step 10



- This is what your device should look like after removing the one screw.

To reassemble your device, follow these instructions in reverse order.