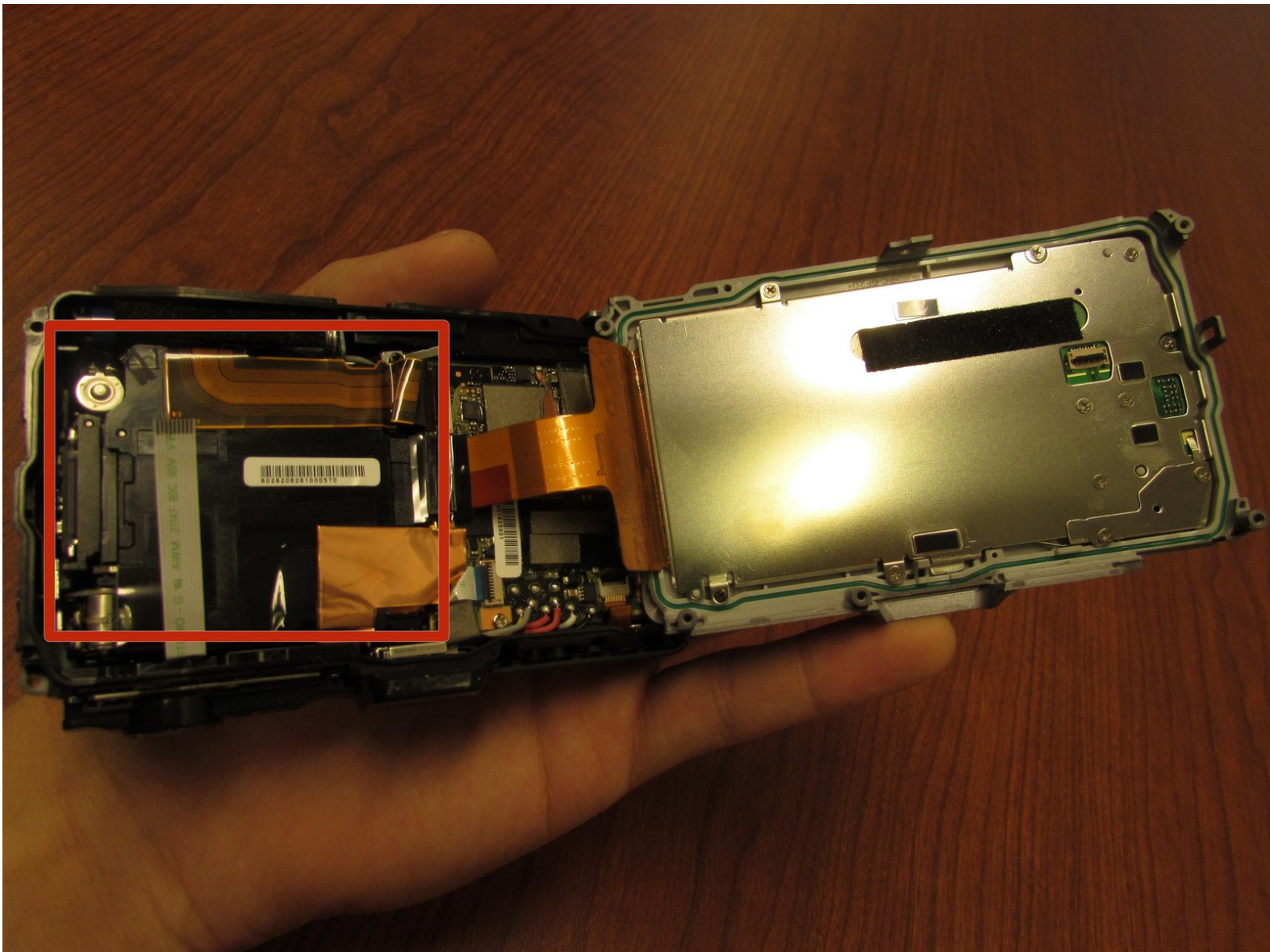




Olympus Tough TG-1 Lens Box Replacement

How to replace an Olympus Tough TG-1 lens box.

Written By: Richard Yacobellis



INTRODUCTION

In this repair guide, you will learn how to take out and replace the Olympus Tough TG-1 lens box.

TOOLS:

- [64 Bit Driver Kit](#) (1)
 - [Phillips #00 Screwdriver](#) (1)
 - [iFixit Opening Tools](#) (1)
-

Step 1 — Top of Camera



- The top of the camera does not contain screws. You do not need to remove anything from the top of the camera.

Step 2 — Plug Side



- Remove the two 5 mm screws on the side of the camera with the plug.
- Open the compartment door and remove both 6 mm screws inside of the compartment door. This will allow you to remove the tan piece held by the screws.

Step 3 — Bottom



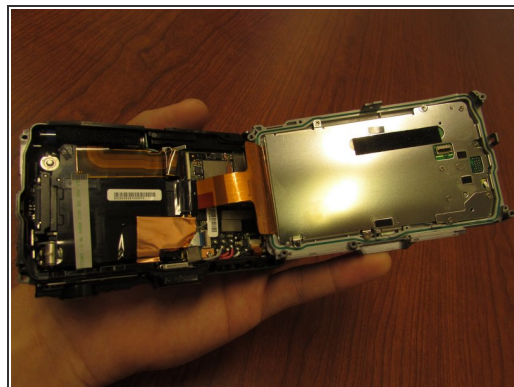
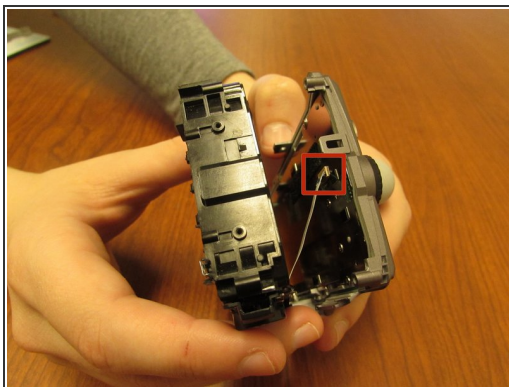
- Turn the camera so that you are looking at the bottom of the camera.
- Remove the two 4 mm screws from the bottom of the camera.
- ⓘ The screws are different. The rear screw is has an unthreaded shank to locate the outer shell while screwing into the inner frame.

Step 4 — Front Panel



- Use the plastic opening tool to remove both components of the front panel. This includes the black part on the outside of the front panel and the main silver panel.
- ⓘ Once every screw and panel is removed, you can replace the backplate to make your camera weatherproof again.

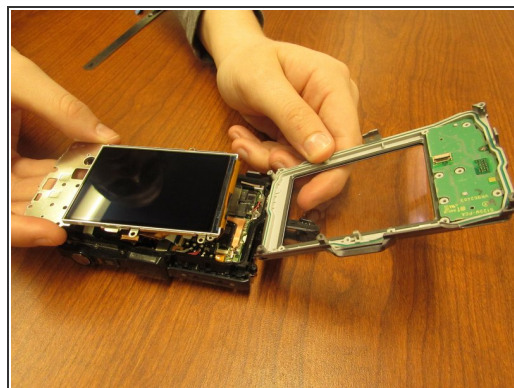
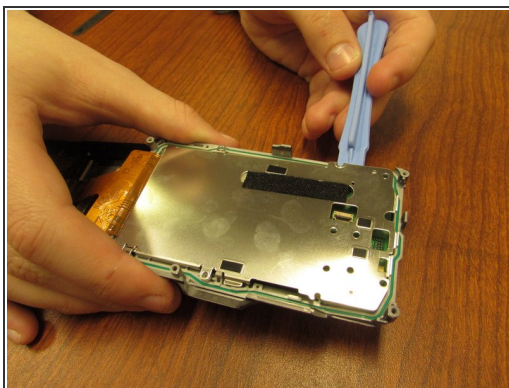
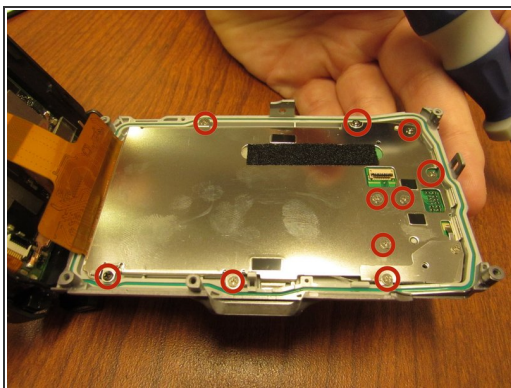
Step 5 — Opening the Internal Case



- Using the plastic opening tools, carefully open the case.

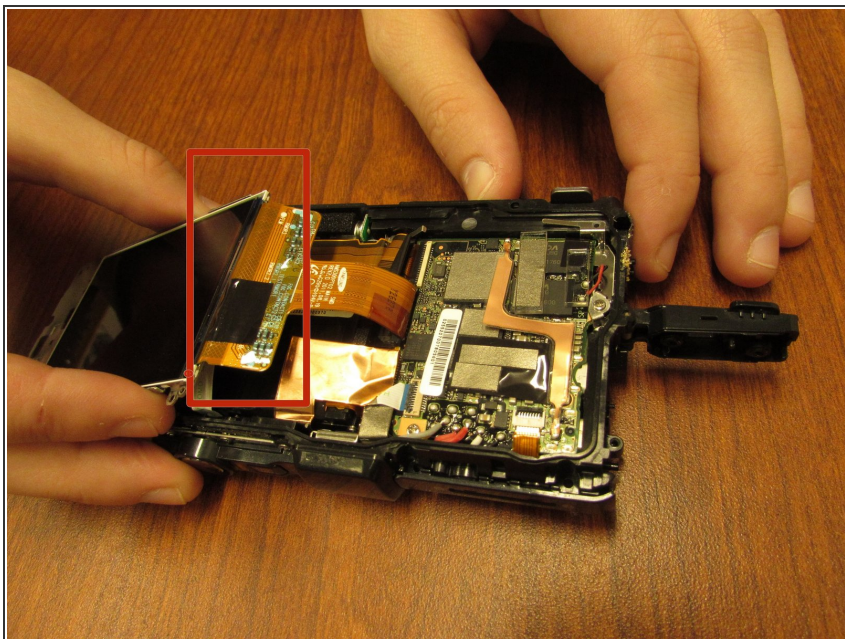
⚠ Do not tear the white circuit ribbon.

Step 6 — Opening the Screen's Protective Cover



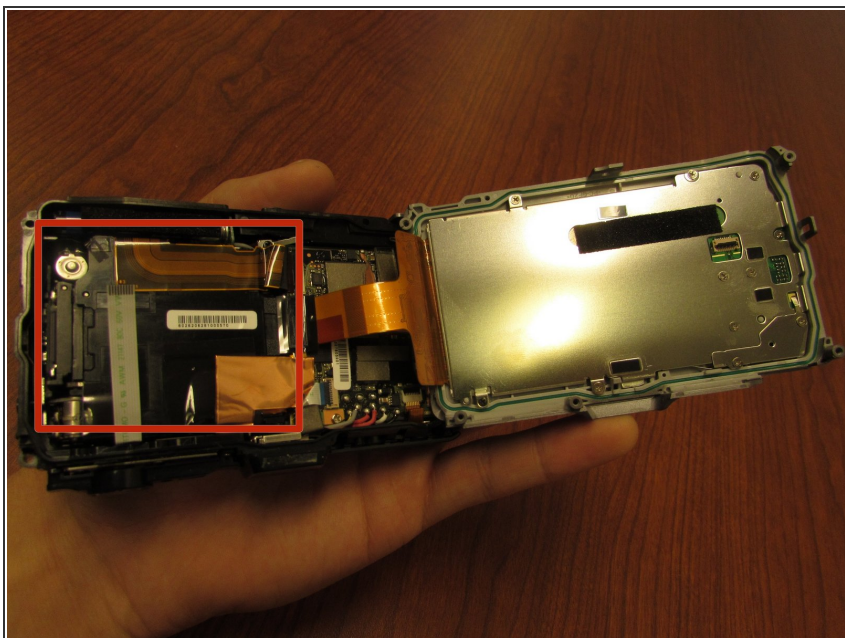
- Using the screwdriver, remove the ten 3mm anchor screws.
- Using the plastic opening tool, open the protective cover so that the screen is exposed.

Step 7 — Unclipping the Screen from the Circuit Ribbon



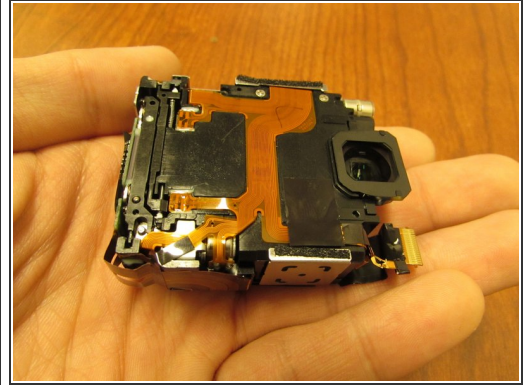
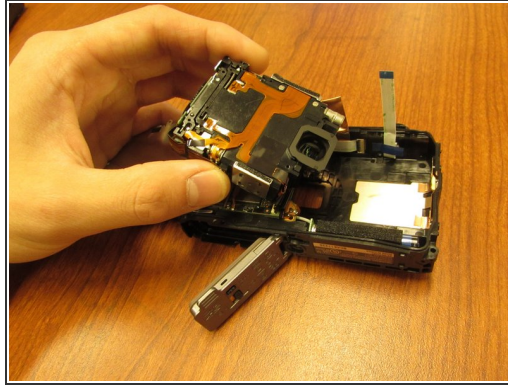
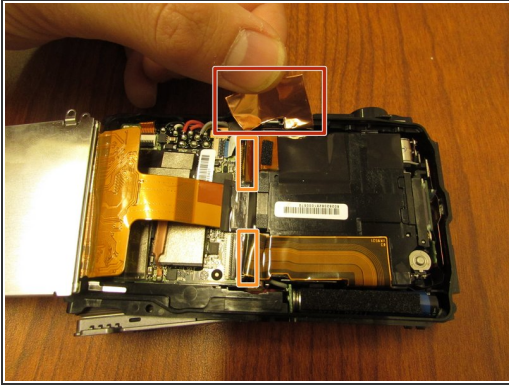
- Carefully unclip the screen from its circuit ribbon.

Step 8 — Lens Box



- Locate the lens box attached to the motherboard.

Step 9



- Lift the copper foiled ribbon away from the lens box.
- Detach the box by unclipping the ribbons connected to the motherboard.
- Lift the box out of the camera.

To reassemble your device, follow these instructions in reverse order.