



# Olympus VR-350 Back Plate Replacement

Replace a broken or damaged back plate.

Written By: Adri



## INTRODUCTION

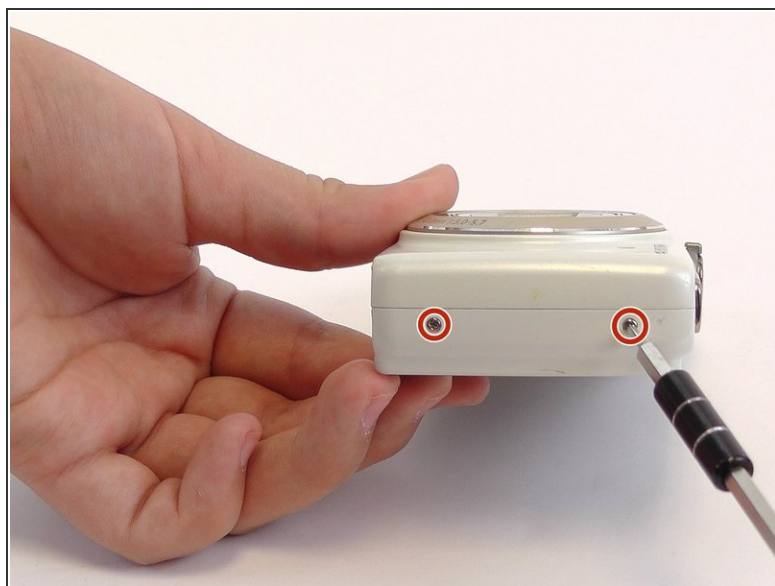
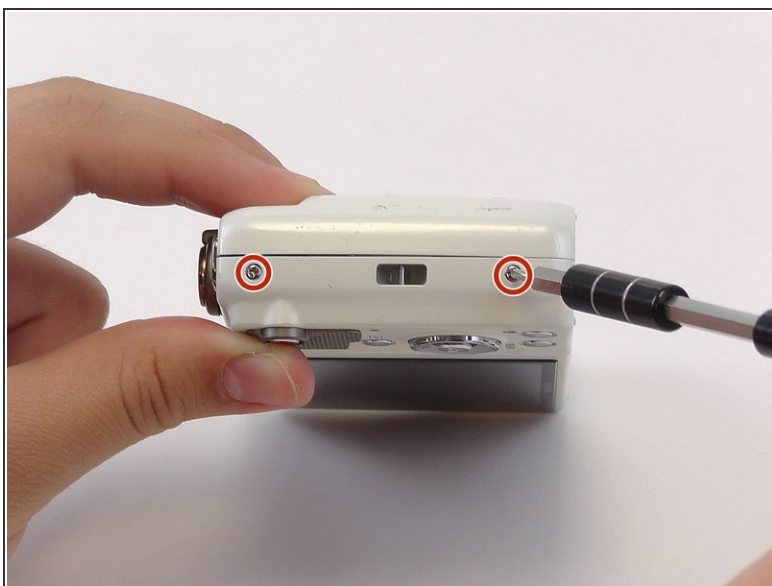
This guide will teach you how to remove and replace the camera's back plate. This can help you replace the plate if it is broken.



### TOOLS:

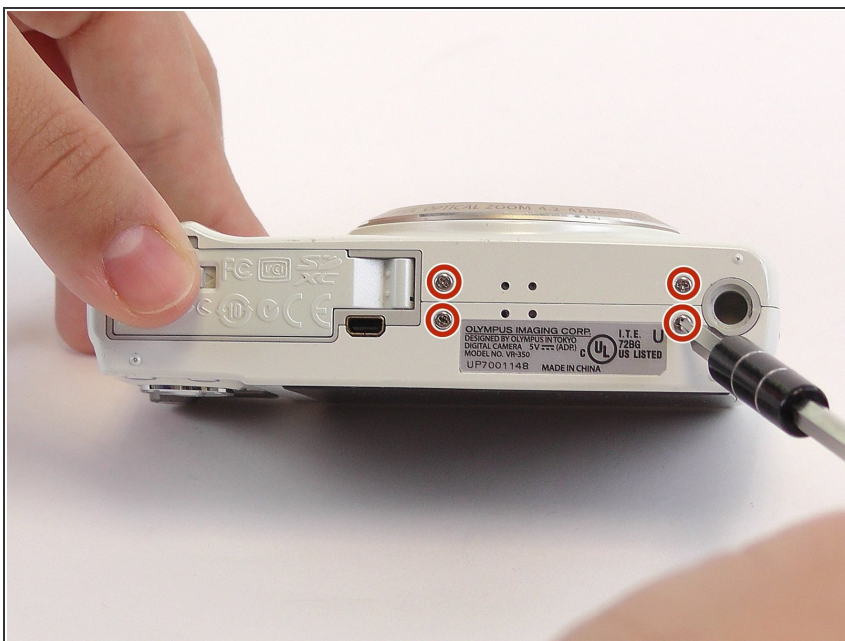
- [Phillips #000 Screwdriver](#) (1)
  - [iFixit Opening Tools](#) (1)
-

## Step 1 — Front Plate



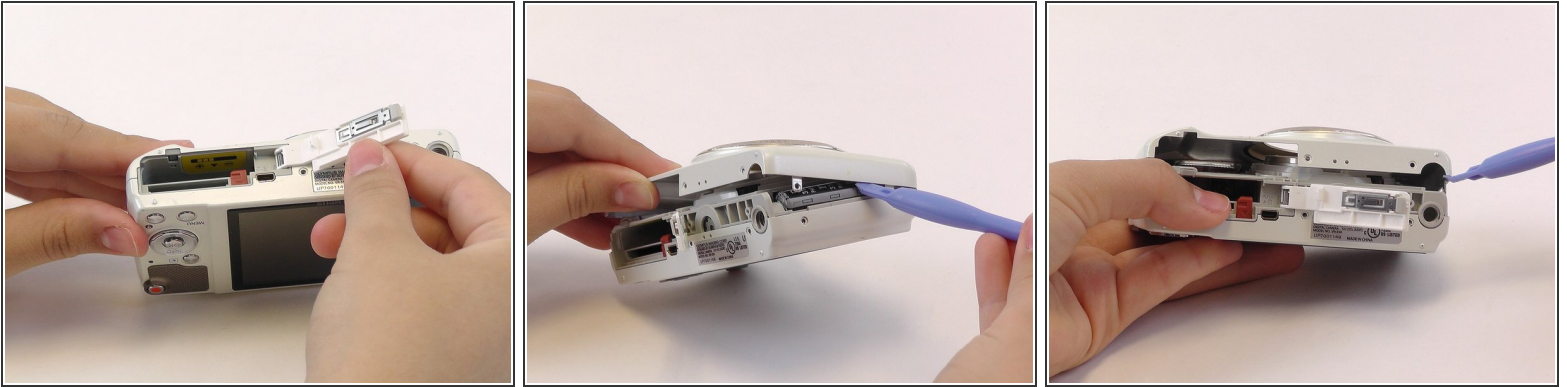
- Remove the two 4mm screws from each side of the camera with a Phillips PH000 screwdriver.

## Step 2



- Remove the four 4mm screws from the bottom of the camera with a Phillips PH000 screwdriver.

### Step 3



- Use the plastic opening tools and your fingers to pry the front plate from the camera.
- ⓘ You might need to open the battery cover to remove the front plate.

### Step 4 — Back Plate



- Use your fingers to pry open the back cover.
- ⚠ When you remove the back of the camera, the button membrane might fall out. Don't lose this sheet.
- ⚠ The LCD screen is connected to the body of the camera by an orange ribbon cable. Don't pull this ribbon cable out.

To reassemble your device, follow these instructions in reverse order.