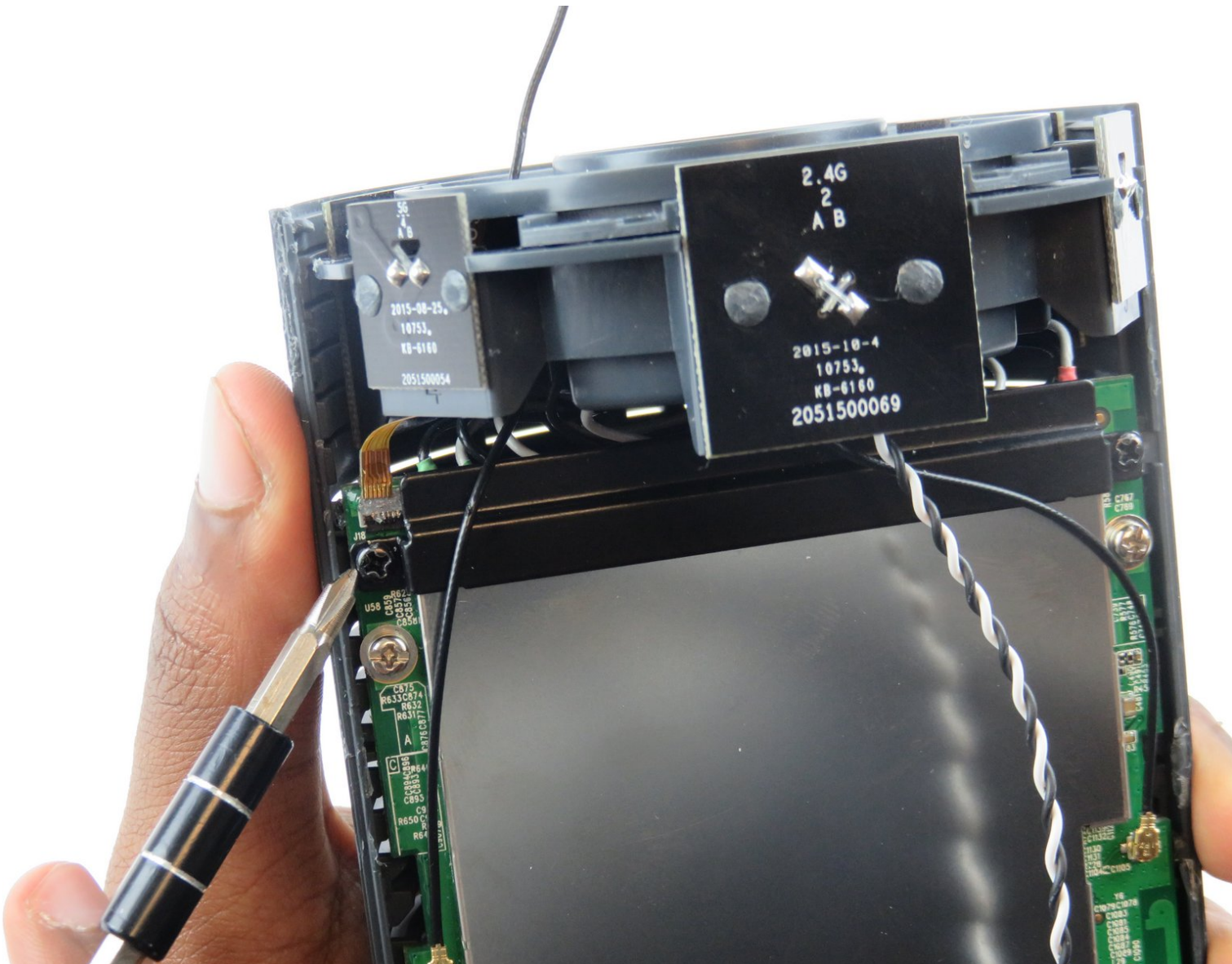




Written By: Mahir Abdella



---

## INTRODUCTION

The antenna array is arguably the second most important component to the OnHub router, and in this guide we'll show you how to replace this essential part. A word of caution before proceeding, the gold connections for the wires are delicate. If they do get bent you can bend them back into place if you are careful.




### TOOLS:

- [Phillips #1 Screwdriver](#) (1)
  - [Desoldering Braid](#) (1)
  - [Metal Spudger Set](#) (1)
  - [iFixit Opening Tools](#) (1)
  - [Tweezers](#) (1)
  - [Solder](#) (1)
  - [Soldering Iron](#) (1)
  - [Staples](#) (1)
-

## Step 1 — Speaker Grille



 Make sure the device is unplugged before proceeding with the disassembly.

- While holding the base firmly using the palm of one hand, remove the cowl (cover) by turning the cowl counterclockwise until a snap is heard. Once disengaged, pull upwards.

## Step 2



- Place the plastic opening tool under the speaker grille, and just above the light ring.
- Move the plastic opening tool around the groove while applying upward force to pry loose the 4 clips holding the grille in place.

### Step 3



- Using a metal spudger, carefully remove the congestion-sensor antenna by undoing the two clips.

⚠ There is a delicate wire connection to the antenna that is easily broken if not careful.

### Step 4 — Congestion-sensing Antenna




- Remove the wire connection to the antenna by soldering it off.
- For help with soldering and de-soldering check out the [iFixit Soldering Guide](#)



## Step 5 — Outer Casing



- You must remove the plastic cover found just above the speaker.
- Wedge the plastic opening tool under the cover and apply pressure in an upward direction.
- There are four clips that you are removing. When disengaged, these clips will make a snapping noise.

 Though the snapping noise is normal, take care not to break these clips.

## Step 6



- Upon removing the cover, four screws and the speaker housing will be exposed.
- Unscrew the four 12mm screws using a #1 Phillips head screwdriver.
- This unlocks the speaker housing and antenna array from the casing.

## Step 7



- On the bottom of the OnHub is two screws holding the casing to the base.
- To access these screws, you must remove the rubber pad that is glued to the base.
- To remove the pad, slide a metal spudger under the edge of the pad. Pry the pad away from the base, removing the glue.
- Once the pad is pulled up enough to grab, peel it the rest of the way exposing the screws.

⚠ The rubber pad is thin and fragile; be careful not to tear when removing.

## Step 8




- Remove the two 12mm screws under the base of the OnHub by using a #1 Phillips head screwdriver.



## Step 9

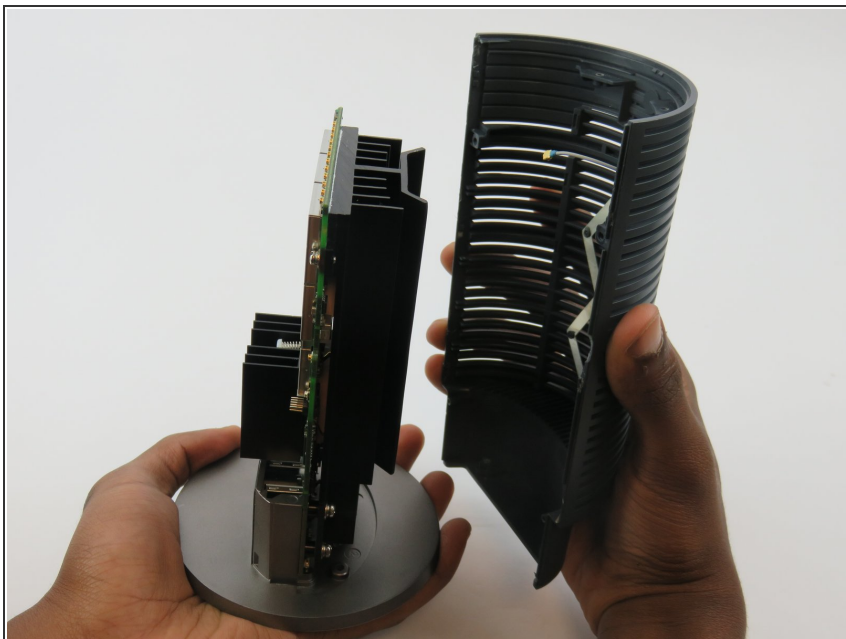


- Once the two screws are removed from the base, it is time to split the casing apart.

 It is okay if a couple clips break. It will still hold together with a few remaining.

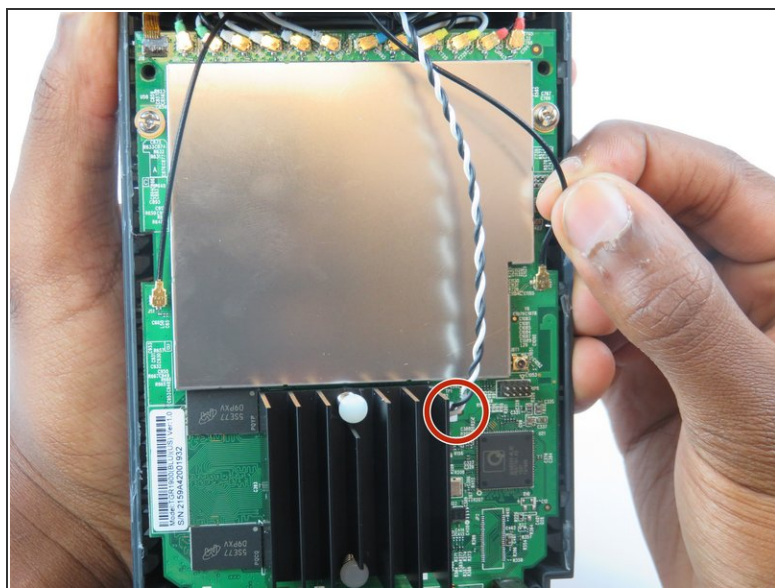
- Wedge a spudger between the two casing halves, and pry the clips apart starting from the top
- There are three hooking style clips in total.

## Step 10



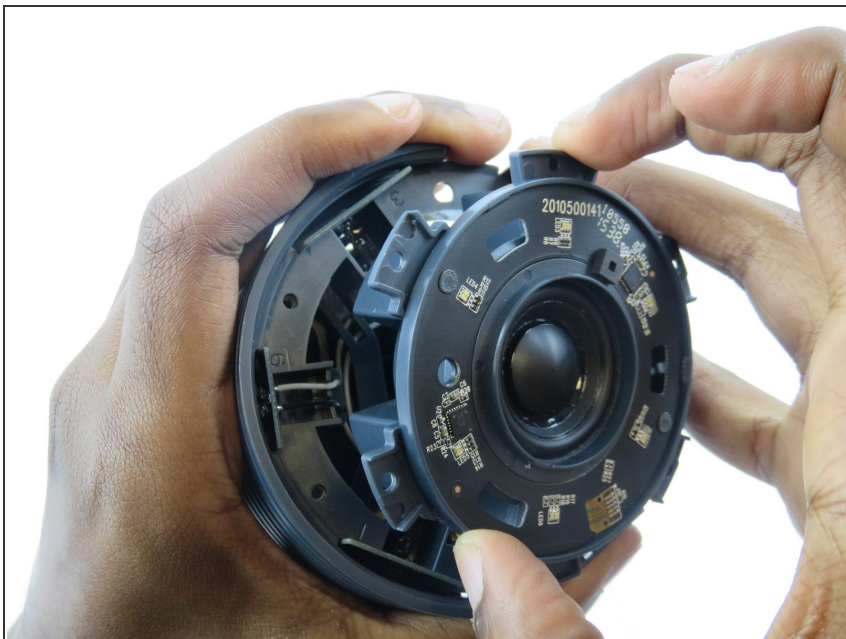
- Once unclipped, you can slide the two casing halves apart, and remove the casing.

## Step 11 — Speaker



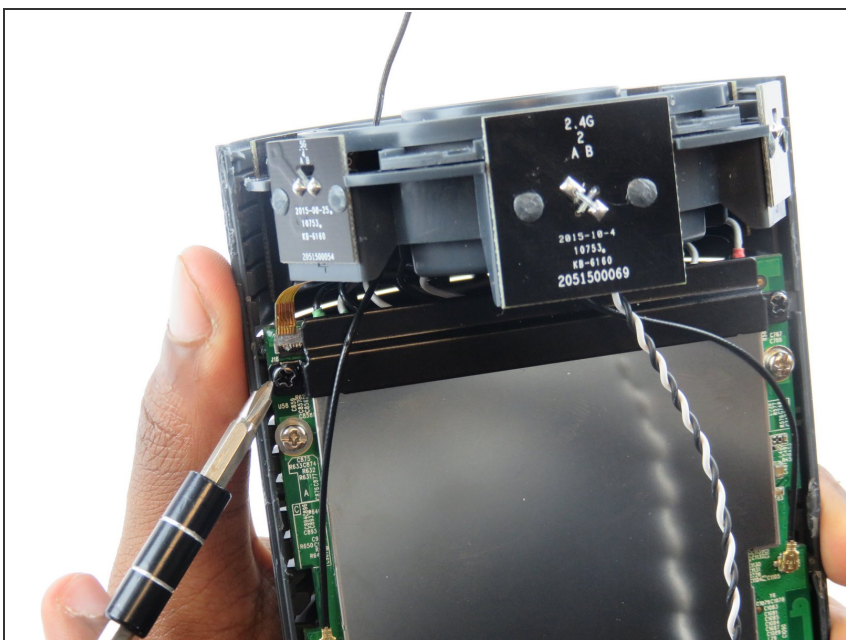
- Underneath the speaker is an intertwined black and white wire.
- Disconnect the wire from its connection to the motherboard.

## Step 12



- The speaker should now easily come off with a firm grip on the OnHub device and pull.

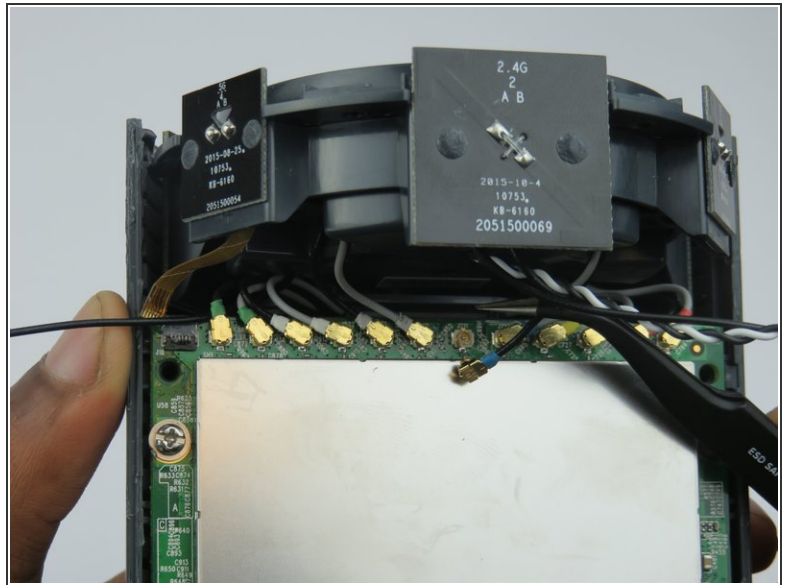
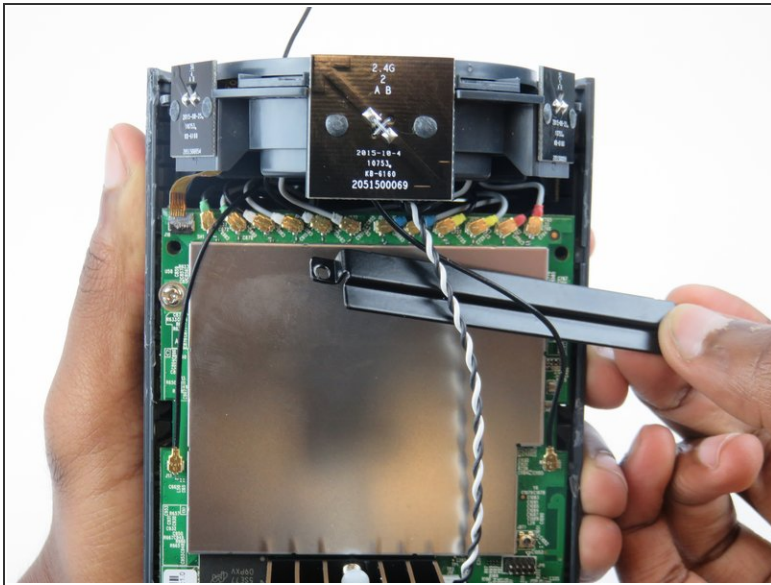
## Step 13 — OnHub Antenna Array



- There is a black, horizontal brace covering 12 wire connections.
- Remove the brace, held by two screws



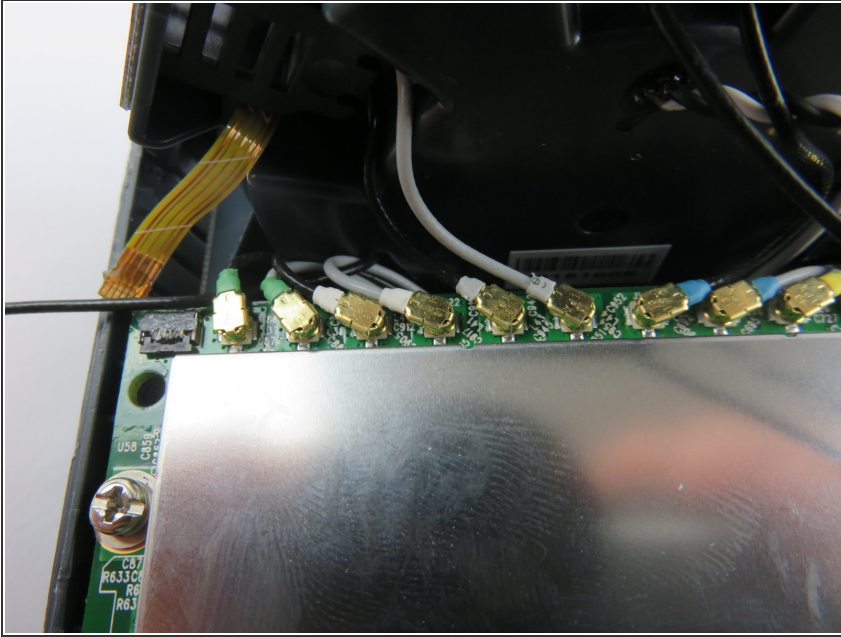
## Step 14




- ✎ Make a note of each wire's position and color, so it will be easier to reconnect later.
- Using tweezers, gently disconnect each of the 12 wire connections, attached to the top of the motherboard.
- ⚠ Be careful when removing the gold connectors as they are easily bent.
- ℹ The connection points can be bent back if not damaged too badly.



## Step 15



 Make sure to carefully pull the tape style wire furthest to the left that is held by glue.

To reassemble your device, follow these instructions in reverse order.