



# Onda V701 Front- Facing Camera Replacement

This guide shows how to replace the front-facing camera. This is the only camera on the device.

Written By: Bradley Huber



---

## INTRODUCTION

This guide will show you how to replace the front facing-camera assembly of the Onda V701. The front facing-camera is the only camera on the device and replacing it is a very easy process.

---




### TOOLS:

- [Spudger](#) (1)
  - [Phillips #00 Screwdriver](#) (1)
  - [iFixit Opening Tools](#) (1)
-

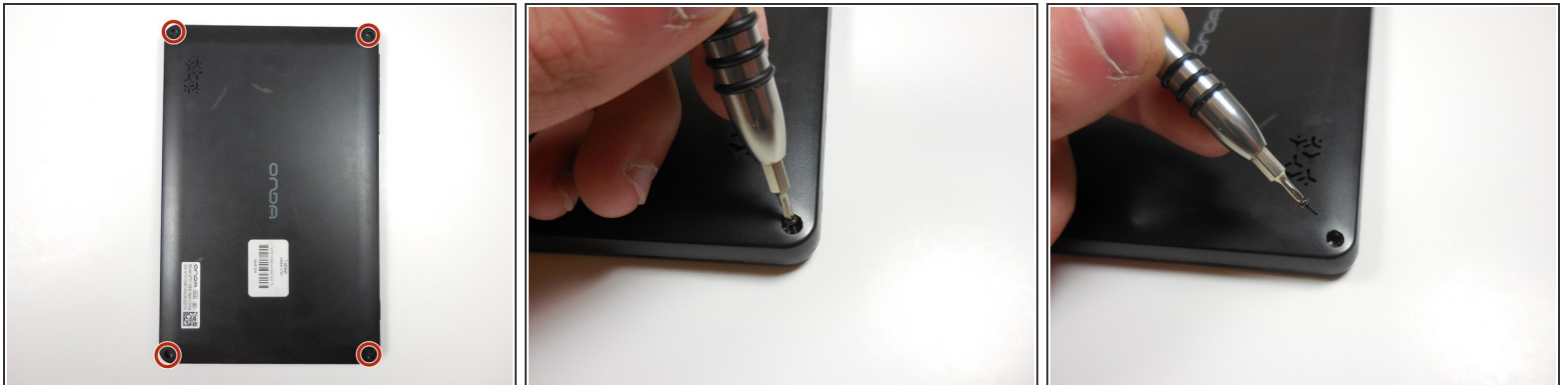
## Step 1 — Back Panel



 Ensure device is powered off before disassembly.

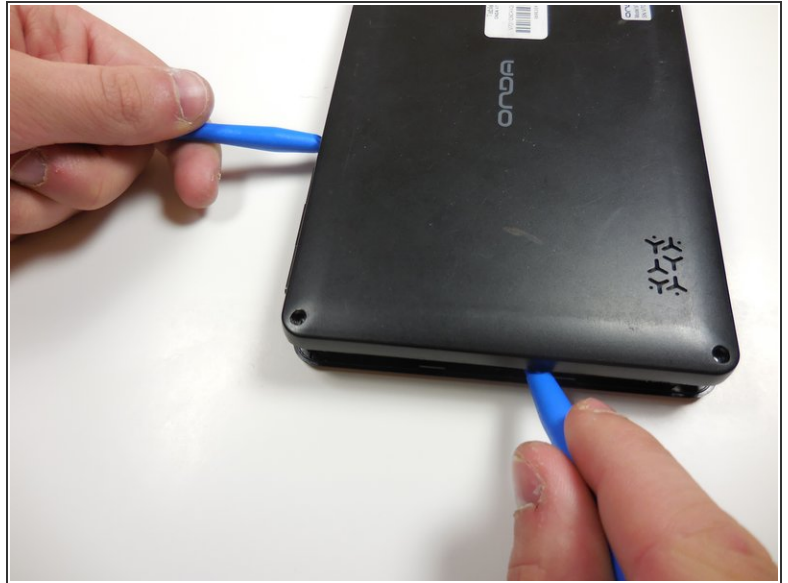
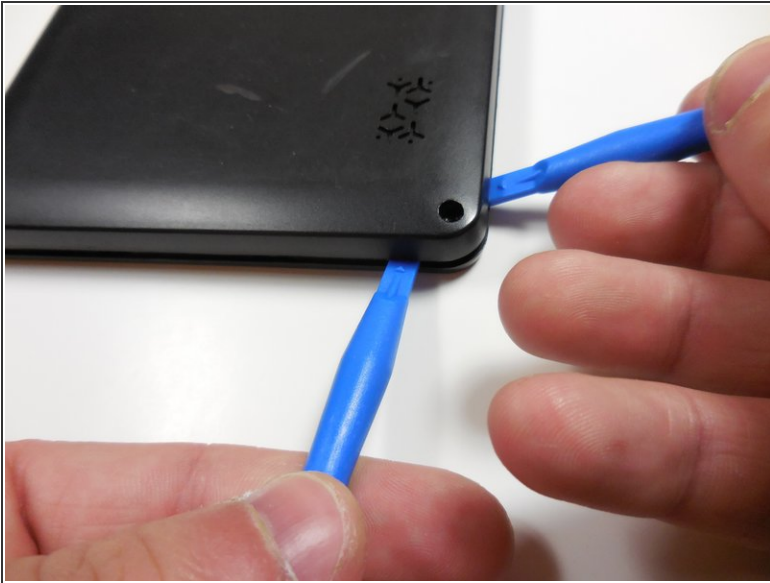
- Remove the 4 rubber screw plugs using a spudger.

## Step 2



- Remove the four 4.8mm mounting screws using a PH00 screwdriver.

### Step 3



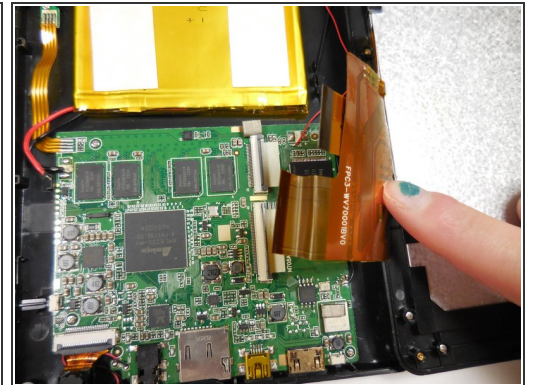
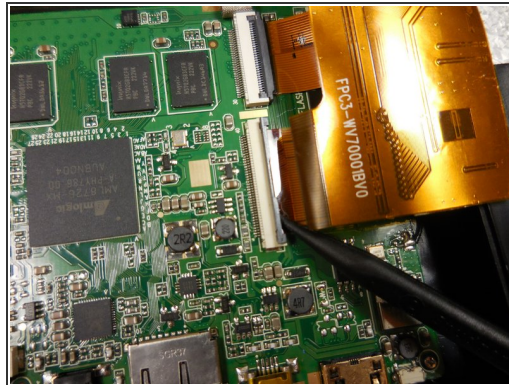
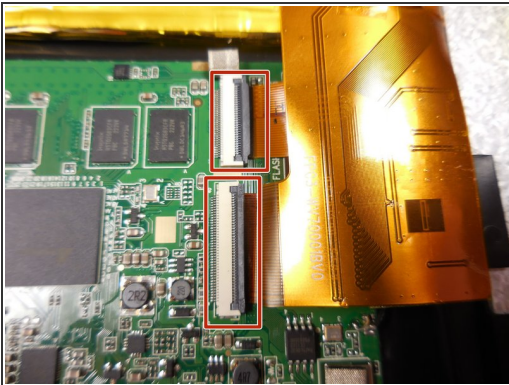
- Starting at one corner, gently pry the back panel assembly from the screen assembly using two plastic opening tools.
- Slide the opening tools around the perimeter of the device to separate the back panel assembly from the screen assembly.

## Step 4



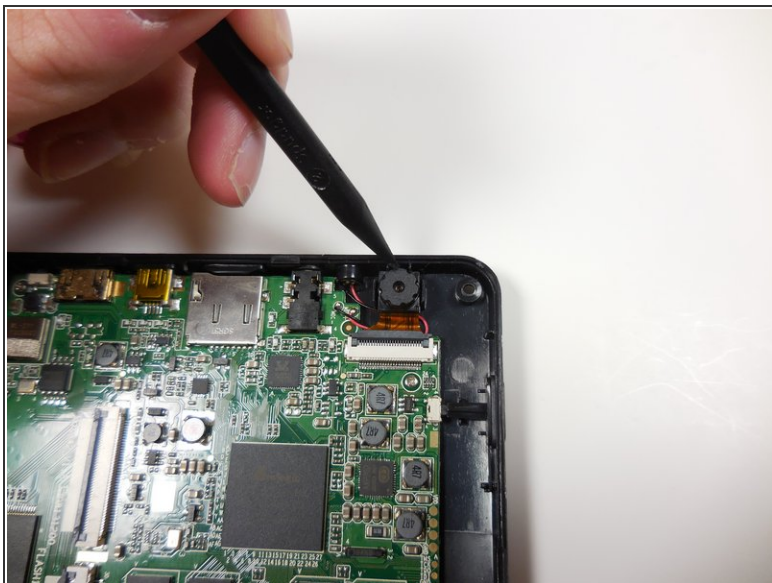
- Gently lift the screen assembly away from the back cover assembly.
- ⓘ Be careful when separating the two pieces as the screen assembly is still connected to the mother board by two ribbon cables.

## Step 5



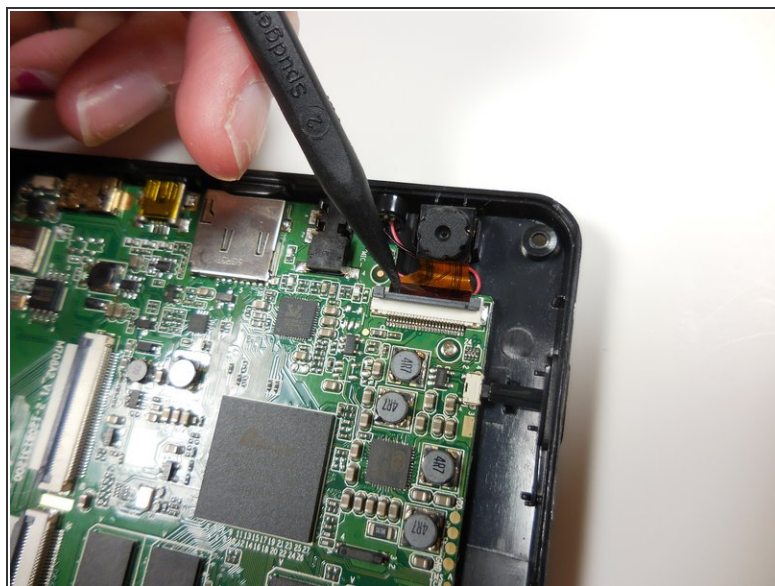
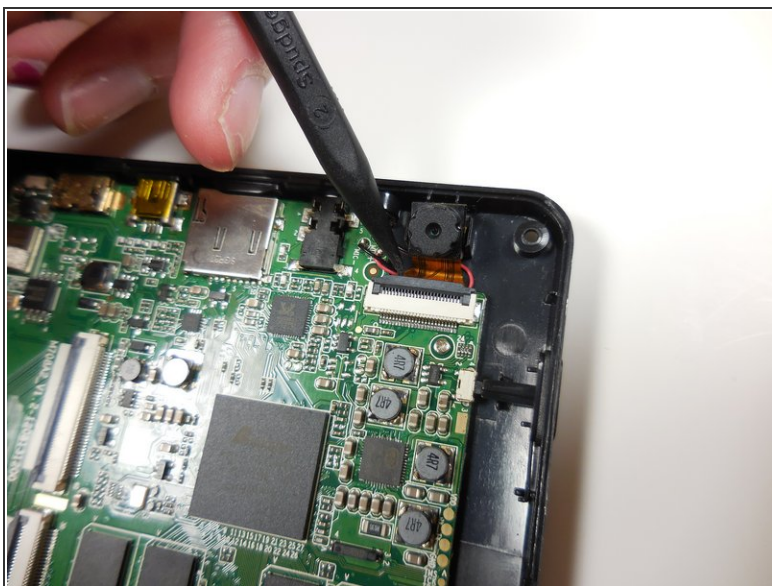
- Disconnect the two ribbon connectors by flipping the gray tabs up with a fingernail or a spudger.
- Remove the ribbon cables.

## Step 6 — Front- Facing Camera



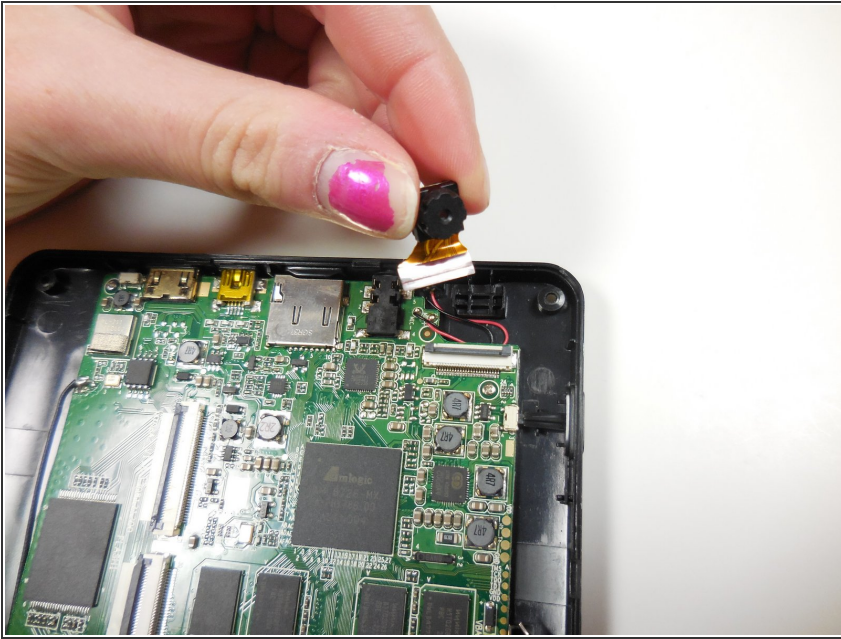
- Gently pry the front-facing camera away from the back panel using a spudger.

## Step 7



- Flip the gray locking tab of the ribbon connector up using a spudger.
- Remove the ribbon cable from the connector.

## Step 8



- Remove the front-facing camera assembly.

To reassemble your device, follow these instructions in reverse order.