



# One Education Infinity Display Assembly Replacement

This guide will show the procedure for how to replace the display assembly on the One Education Infinity laptop.

Written By: Austin Blakely



# INTRODUCTION

This guide will show the process of removing and replacing the display assembly of the One Education Infinity. This can be done both from the lower case, removing the hinge assembly along with the display assembly, or from the upper case, by opening the case around the screen and removing the display from the upper hinge. This guide will show the latter process. If you have sourced a compatible display without the surrounding plastic assembly, see our LCD Display and Touch Screen guide for further instructions on separating the plastic coverings for reuse on the new display.

The display assembly is responsible for displaying the graphics produced by the computer. If your display is cracked or is not functioning properly it should be visibly obvious and easy to diagnose. The touch assembly is also incorporated into the design, so any lack of response from touch input may be resolved by a display or display assembly replacement.

Use caution handling the exposed rear of the display, as many pieces of tape need to be removed on the back cover and there is a small possibility of ripping into the display panel if sharp tools are used.

Additionally, note that this guide has the user remove the battery prior to disassembling the upper case to prevent any electrical damage while disconnecting the display cables. However, the same effect can be achieved by simply disconnecting the battery cable, so the battery removal in step 5 can be skipped to save a bit of time and effort.




## TOOLS:

- [Metal Spudger](#) (1)
  - [iFixit Opening Tools](#) (1)
  - [Phillips #00 Screwdriver](#) (1)
  - [Spudger](#) (1)
-

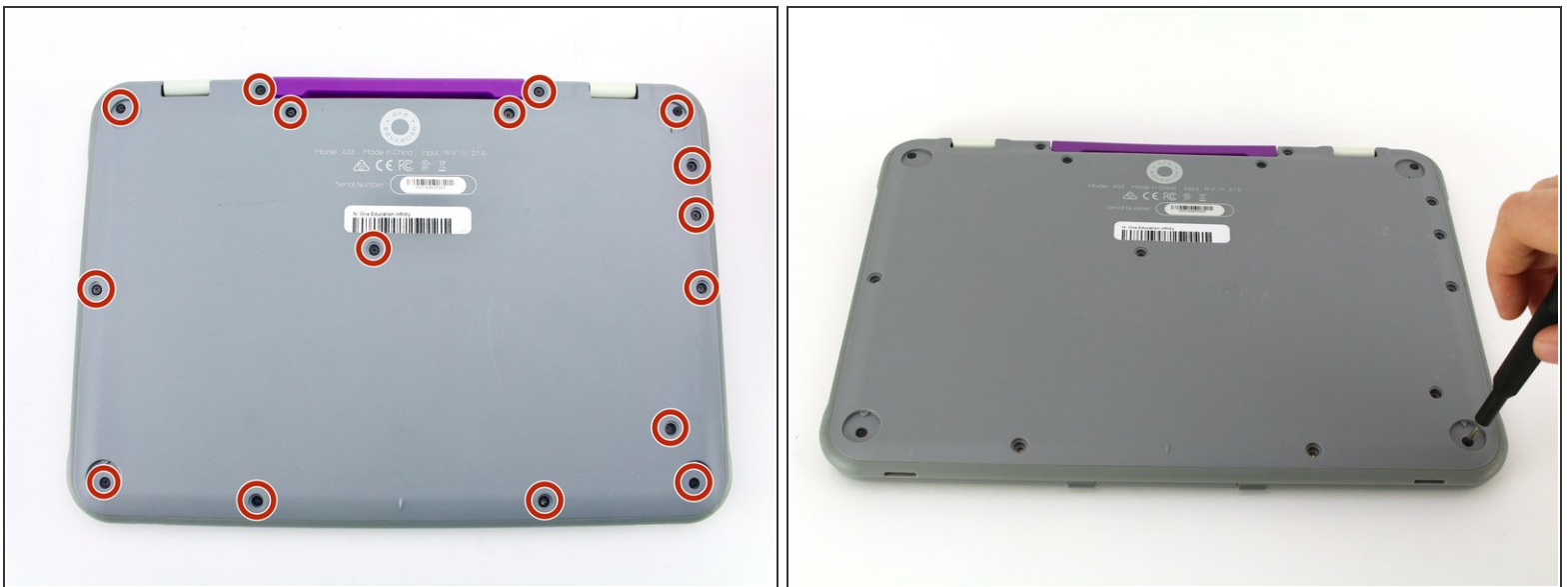
## Step 1 — Back Case



 Always power off your device before beginning disassembly.

- Remove the screw covers and rubber feet from the bottom of the laptop with a metal spudger.

## Step 2



- Using a Phillips #00 screwdriver, remove the sixteen 5.0 mm black screws from the back panel.

## Step 3



- Using the iFixit plastic opening tool or spudger, start near the white hinge of the device and lift along the outer edges of the device until all clips are released.
  - Lift the back case off of the device.
- i** Removing the back may create a loud snapping noise.

## Step 4 — Battery



- i** There may be black tape inside your device covering components or holding down wires. This tape is unimportant for the function of the device, and can be removed.
- Carefully wiggle the battery cable to the right and out of the port with a plastic spudger.



## Step 5



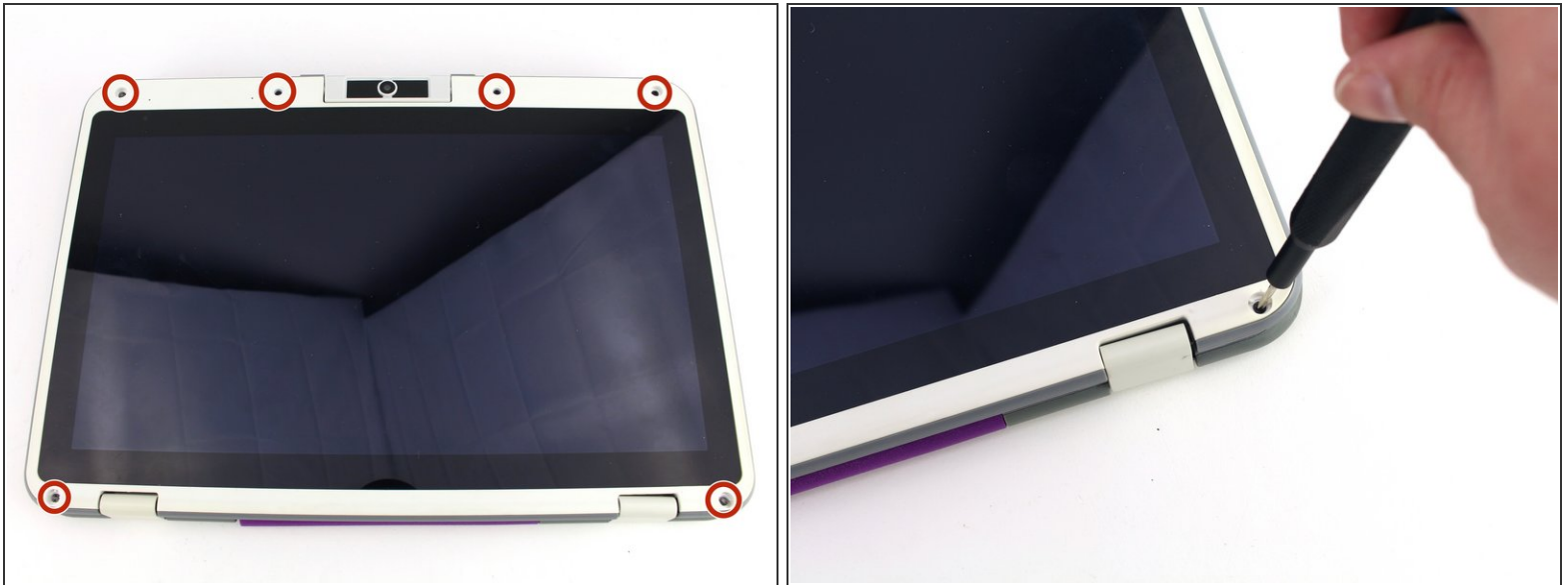
- Wedge a plastic spudger underneath the battery from the upper edge and slide it carefully along the length of the battery to separate it from the case.
- ⓘ There is a mild adhesive holding down the battery. Take care not to puncture or excessively bend the battery while freeing it from the adhesive.
- Lift the battery out from the internal case.

## Step 6 — Upper Case



- Flip open the laptop so that the screen is exposed.
- ⓘ We found it convenient to flip the laptop into tablet mode for added support.
- Using a spudger, remove the six screw covers along the bezel of the screen.

## Step 7



- Remove the six 2.8 mm Phillips #00 screws along the bezel.

## Step 8



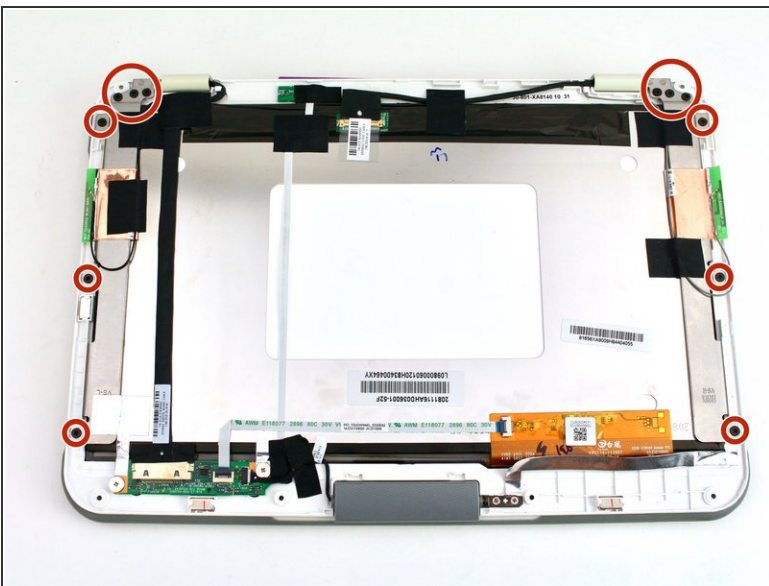
- Use the two tabs on the top edge of the screen to pry the case apart.
- Once the two top clips have been disengaged, start to work your way around the rest of the screen.

## Step 9



- Once all the clips have been popped off, remove the upper case from the back of the display assembly.
- ⓘ You may want to close the laptop while disconnecting the hinge-side edge, as it will give you extra clearance for the upper case.

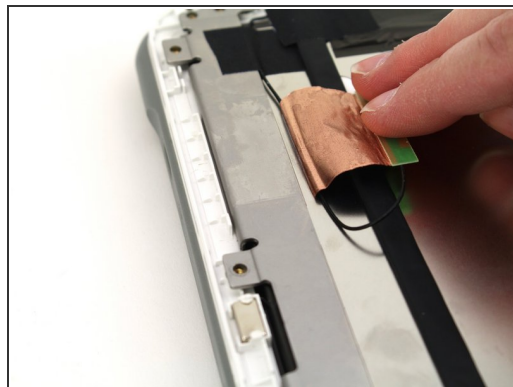
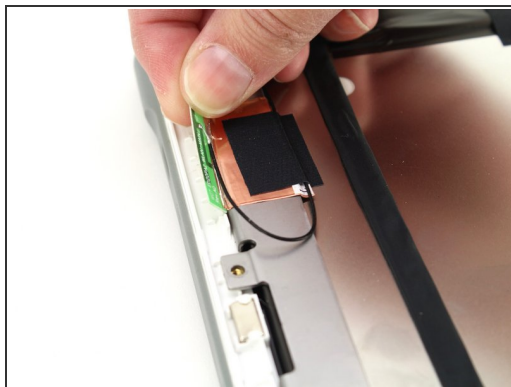
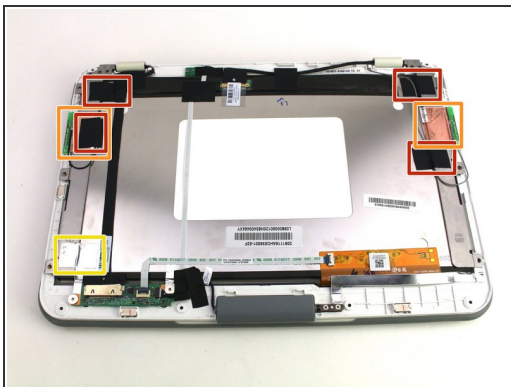
## Step 10 — Upper Hinge Assembly



- Remove the twelve 3.8 mm Phillips #00 screws from the hinge brackets extending along the height of the display.

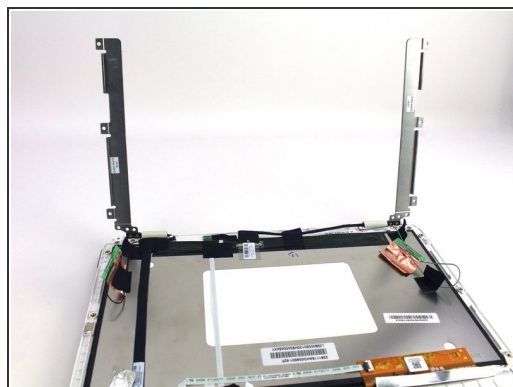
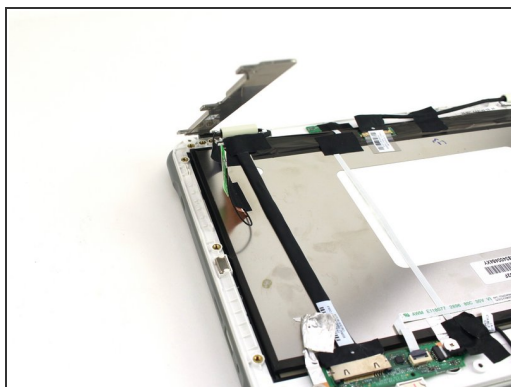
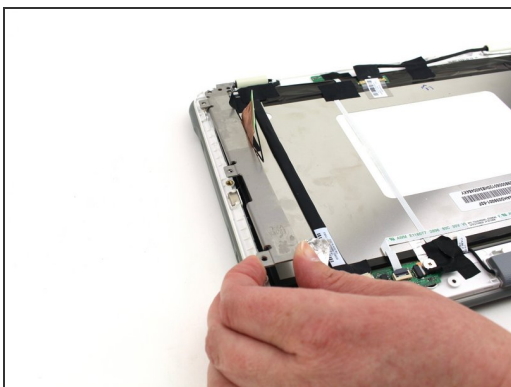


## Step 11



- Peel back the four pieces of black tape.
- Peel back the antenna cable boards off of the display hinges.
- Peel off the silver tape from the display hinges.

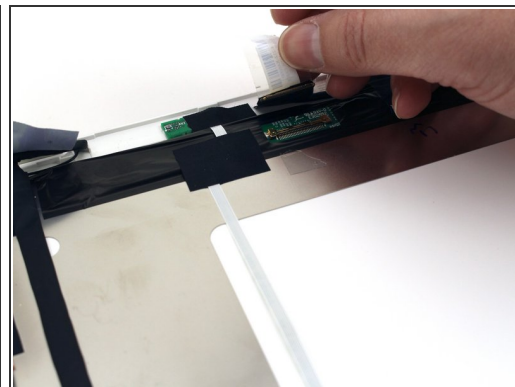
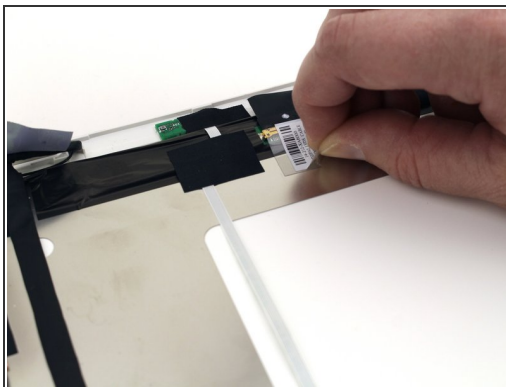
## Step 12



- Lift up both hinges, ensuring that they clear all tape and wires.

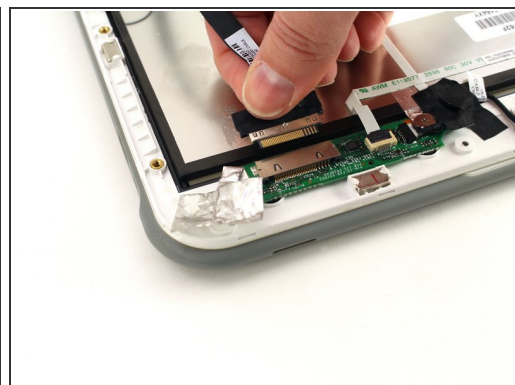
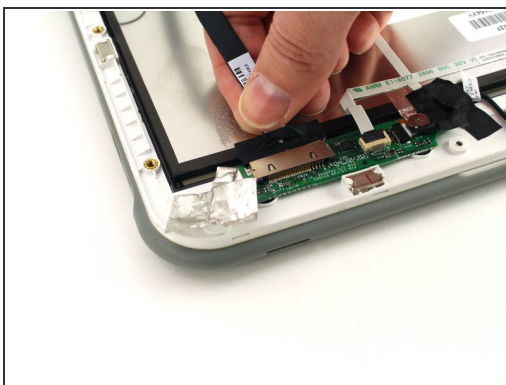
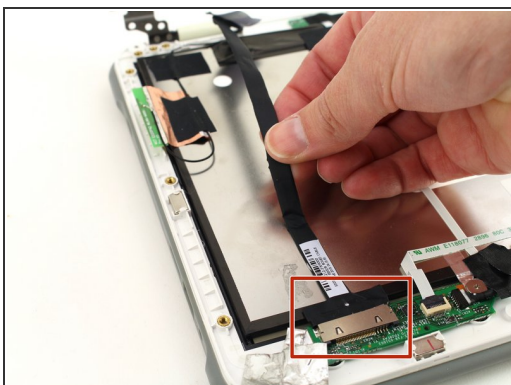


## Step 13 — Display Assembly



- Remove the first of the two display cables by peeling back the tape and pulling the cable out from the connector with your fingers.

## Step 14



- Peel up the second display cable starting from its base and then disconnect it by pulling it horizontally out of the connector.

## Step 15



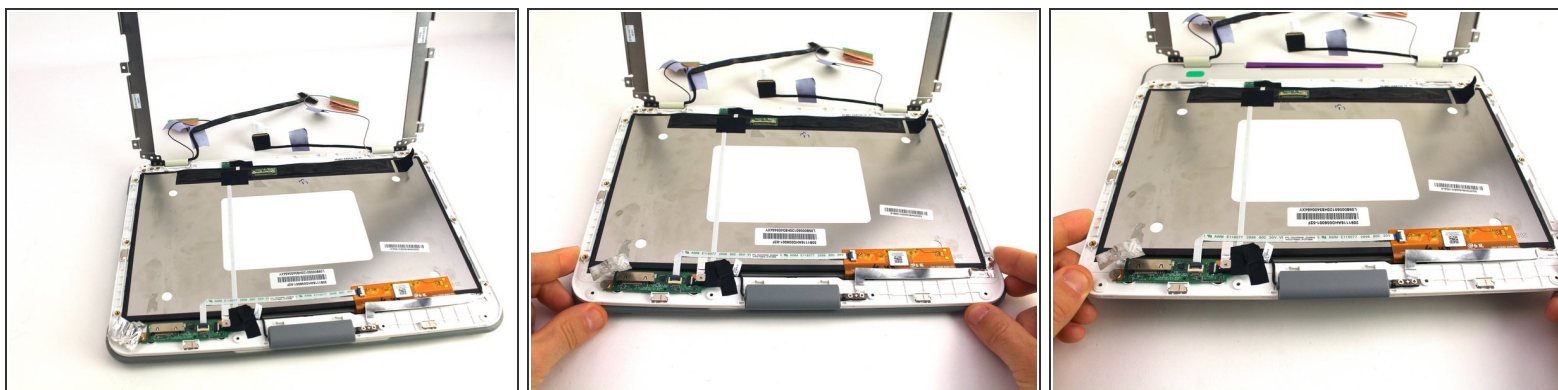
- Peel back the last piece of tape holding down the left side antenna cable.
- Ensure that both the left-hand display and antenna cables clear the cable guide just to the right of the left hinge.

## Step 16



- Peel back the black tape holding down the right display cable.
- Ensure that both the right-hand display and antenna cables are free of the cable guide just to the left of the right hinge.

## Step 17



- Once the hinge brackets are both flipped up and the display and antenna cables are all free from the display assembly, slide the display assembly towards you and away from the rest of the device.

To reassemble your device, follow these instructions in reverse order.