



One Education Infinity Handle Replacement

If you need to replace the handle of your One Education Infinity, follow this guide.

Written By: Sarah Westberg



INTRODUCTION

In this guide you will learn how to replace the handle of your One Education Infinity. The handle is connected to the lower case with springs and Phillips #00 screws so it has give but is very secure. In the event that the handle becomes damaged, the process is very easy to replace. Be sure to power off and unplug your laptop prior to doing any work on your laptop, even the handle.




TOOLS:

- [Metal Spudger](#) (1)
 - [iFixit Opening Tools](#) (1)
 - [Phillips #00 Screwdriver](#) (1)
-

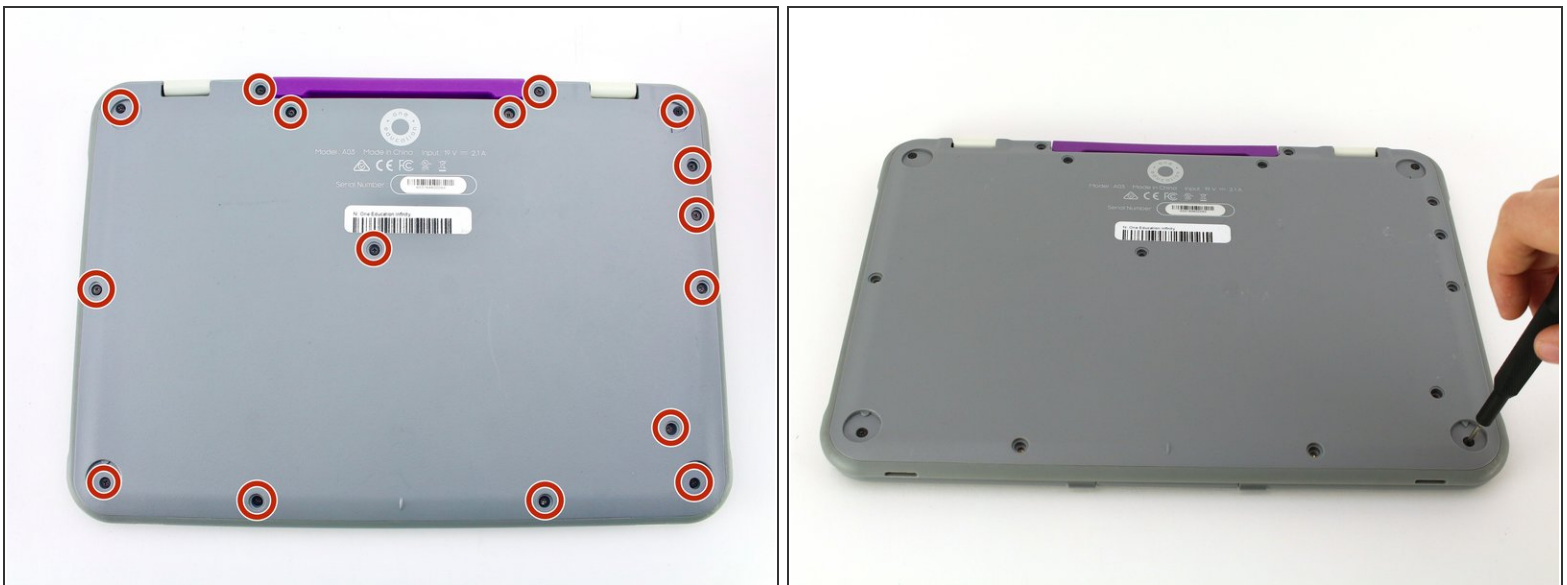
Step 1 — Back Case



 Always power off your device before beginning disassembly.

- Remove the screw covers and rubber feet from the bottom of the laptop with a metal spudger.

Step 2



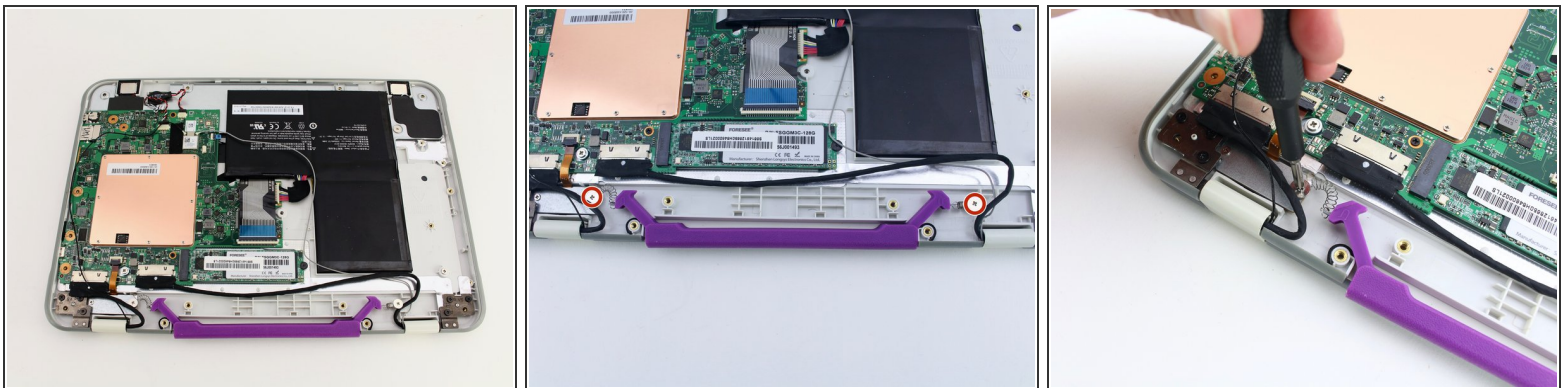
- Using a Phillips #00 screwdriver, remove the sixteen 5.0 mm black screws from the back panel.

Step 3



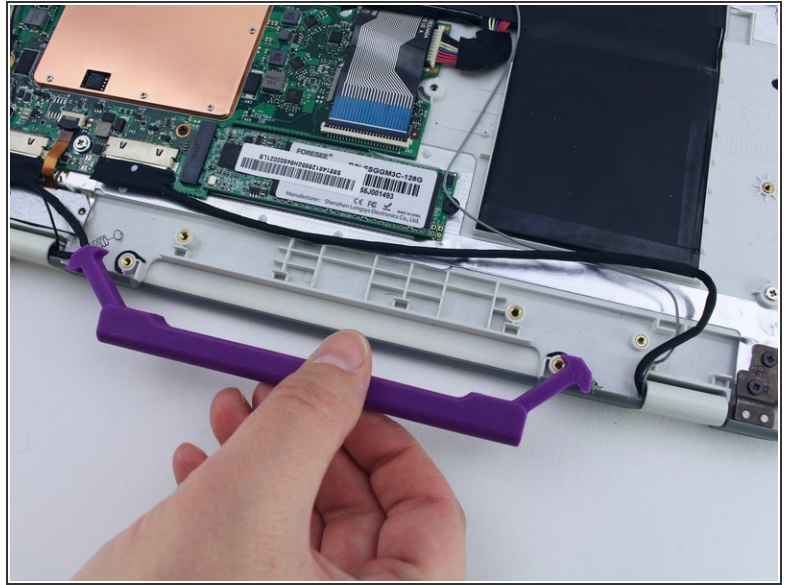
- Using the iFixit plastic opening tool or spudger, start near the white hinge of the device and lift along the outer edges of the device until all clips are released.
- Lift the back case off of the device.
- ⓘ Removing the back may create a loud snapping noise.

Step 4 — Handle



- Using the Phillips #00, remove the two 4.7 mm screws securing the handle to the case.

Step 5



- Remove the handle from the device.

To reassemble your device, follow these instructions in reverse order.