



One Education Infinity Hinge Assembly Replacement

This guide will show you how to repair the hinges in your One Education Infinity through a removal and replacement of the broken component.

Written By: Austin Blakely



This document was generated on 2020-03-10 09:20:42 PM (MST).

INTRODUCTION

If you need to replace the hinge assembly of your One Education Infinity laptop, this is the guide for you. We will be going through the step by step process of removing the entire hinge assembly from the device, separating the upper and lower case portions in the process.

The hinge assembly is a purely mechanical part responsible for regulating the movement between the upper and lower case. Over time, or with physical damage such as a fall, the hinge assembly may fail or start to loosen, preventing the laptop from being held in an open position when desired. If this is the case, the following guide will help one to replace the assembly and resume the desired movement from their device.

The hinge of the One Education Infinity facilitates a 360° range of motion such that the laptop can be used in a tablet mode, with the upper case of the device swinging below the keyboard.

Additionally, note that this guide has the user remove the battery prior to disassembling the upper case to prevent any electrical damage while disconnecting the display cables. However, the same effect can be achieved by simply disconnecting the battery cable, so the battery removal in step 5 can be skipped to save a bit of time and effort.




TOOLS:

- [Metal Spudger](#) (1)
- [iFixit Opening Tools](#) (1)
- [Phillips #00 Screwdriver](#) (1)
- [Spudger](#) (1)

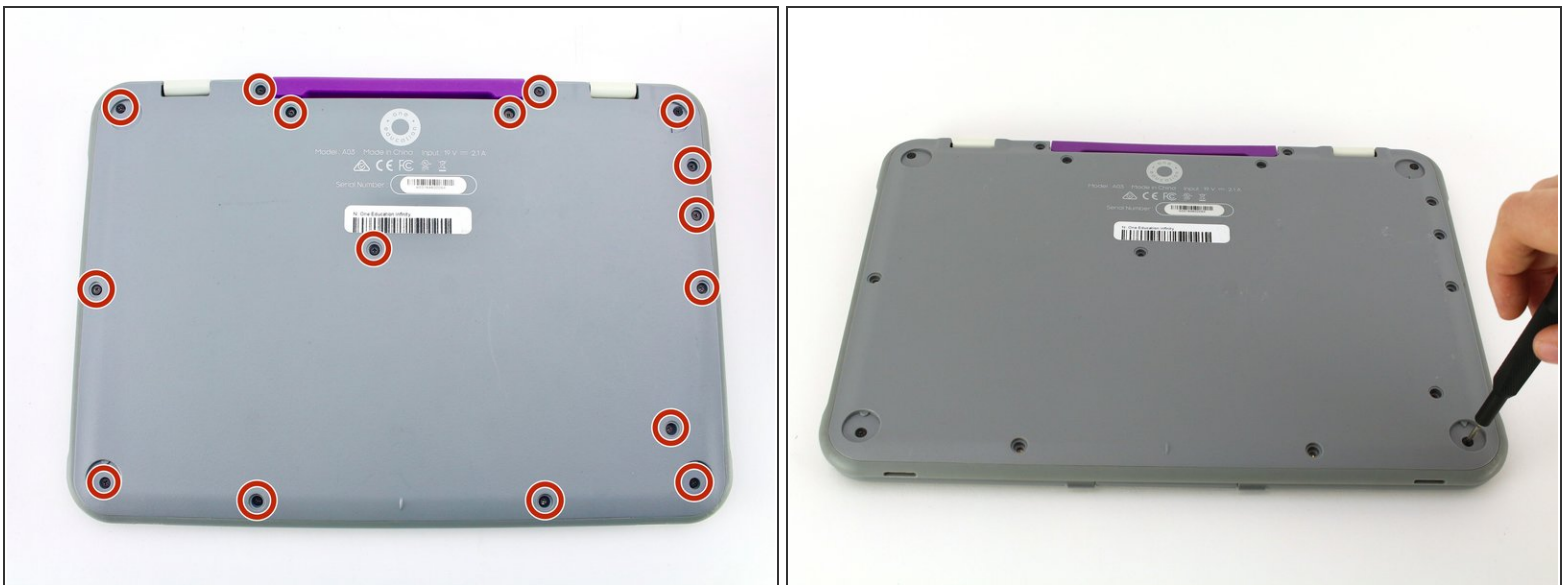
Step 1 — Back Case



 Always power off your device before beginning disassembly.

- Remove the screw covers and rubber feet from the bottom of the laptop with a metal spudger.

Step 2



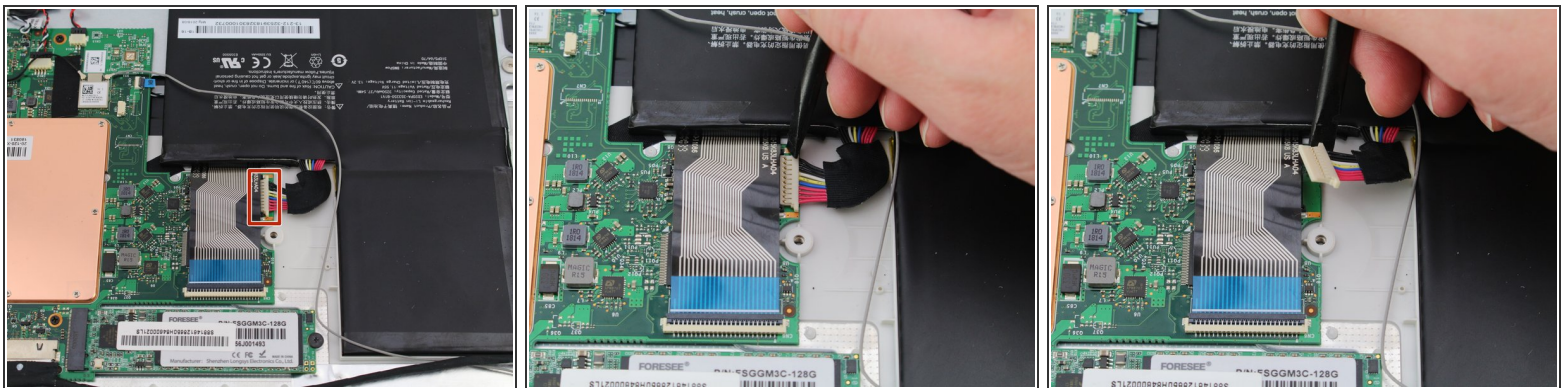
- Using a Phillips #00 screwdriver, remove the sixteen 5.0 mm black screws from the back panel.

Step 3



- Using the iFixit plastic opening tool or spudger, start near the white hinge of the device and lift along the outer edges of the device until all clips are released.
 - Lift the back case off of the device.
- i** Removing the back may create a loud snapping noise.

Step 4 — Battery



- i** There may be black tape inside your device covering components or holding down wires. This tape is unimportant for the function of the device, and can be removed.
- Carefully wiggle the battery cable to the right and out of the port with a plastic spudger.

Step 5



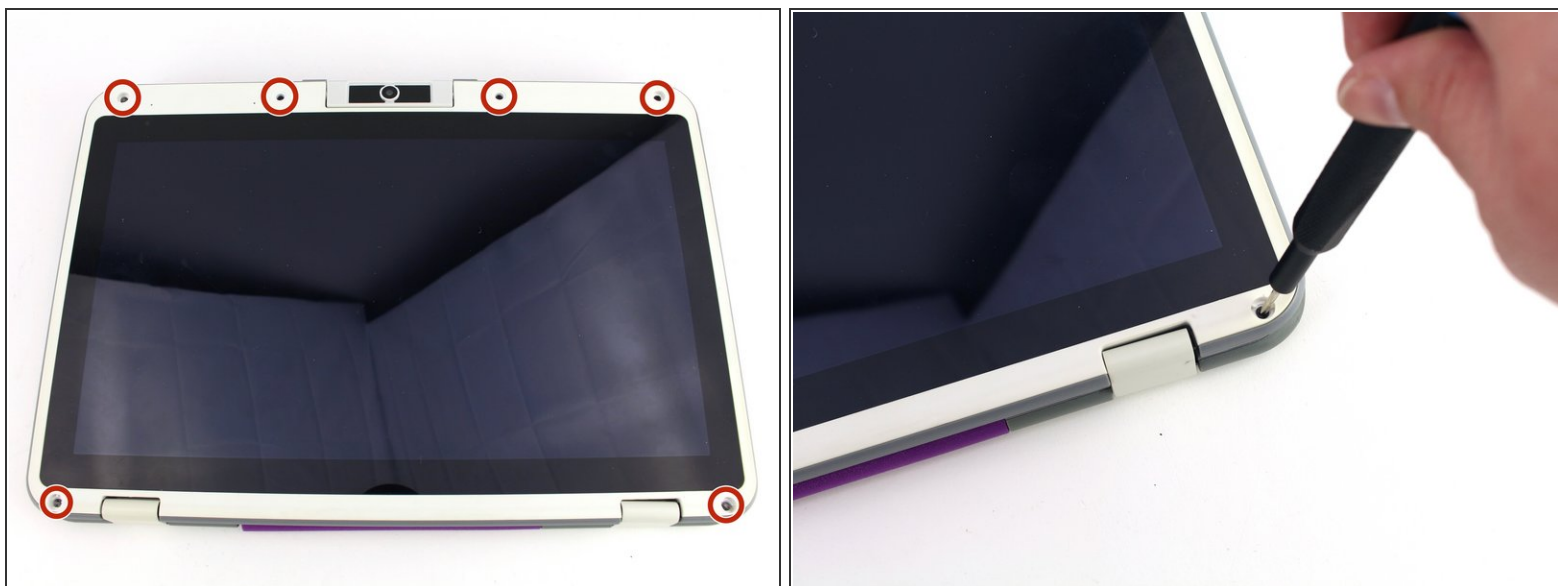
- Wedge a plastic spudger underneath the battery from the upper edge and slide it carefully along the length of the battery to separate it from the case.
- ⓘ There is a mild adhesive holding down the battery. Take care not to puncture or excessively bend the battery while freeing it from the adhesive.
- Lift the battery out from the internal case.

Step 6 — Upper Case



- Flip open the laptop so that the screen is exposed.
- ⓘ We found it convenient to flip the laptop into tablet mode for added support.
- Using a spudger, remove the six screw covers along the bezel of the screen.

Step 7



- Remove the six 2.8 mm Phillips #00 screws along the bezel.

Step 8



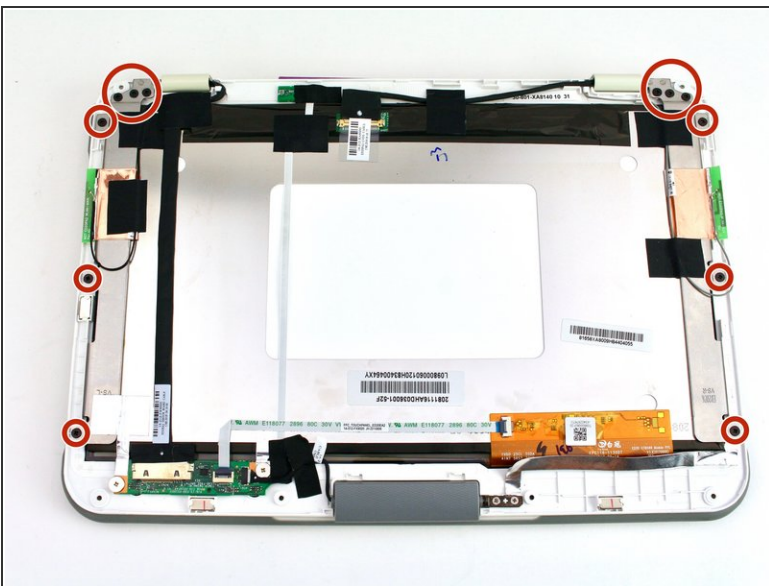
- Use the two tabs on the top edge of the screen to pry the case apart.
- Once the two top clips have been disengaged, start to work your way around the rest of the screen.

Step 9



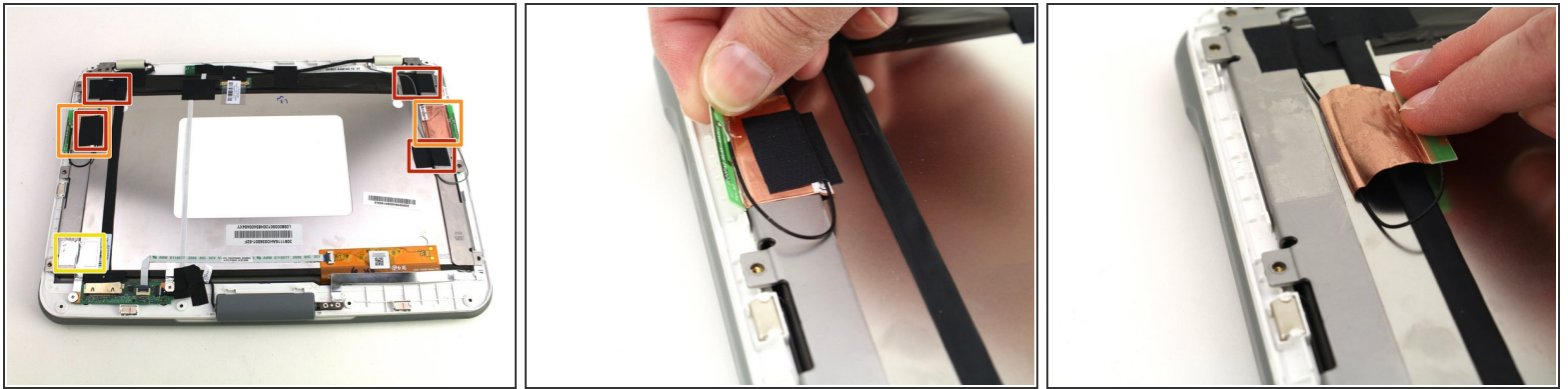
- Once all the clips have been popped off, remove the upper case from the back of the display assembly.
- ⓘ You may want to close the laptop while disconnecting the hinge-side edge, as it will give you extra clearance for the upper case.

Step 10 — Upper Hinge Assembly



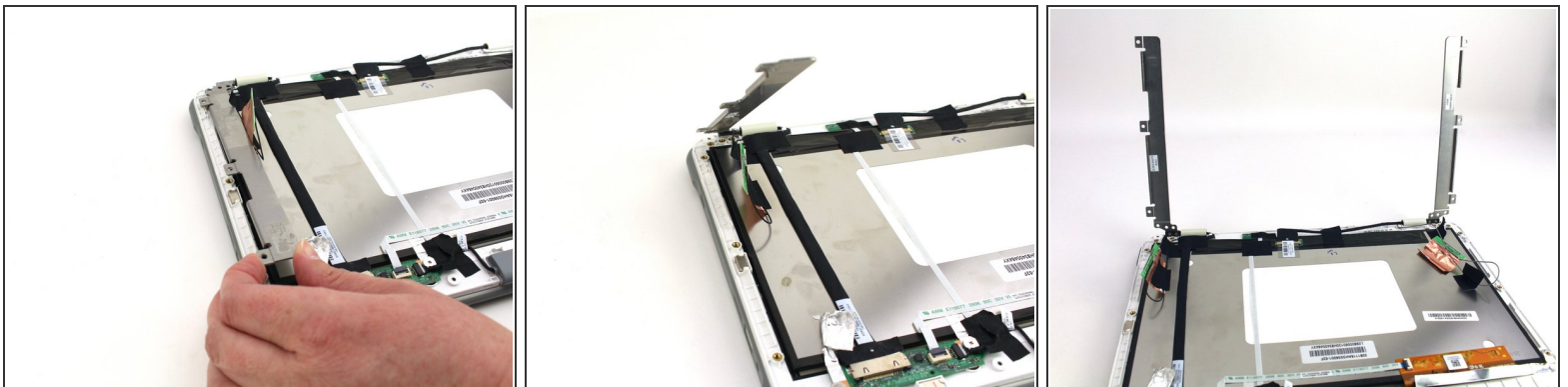
- Remove the twelve 3.8 mm Phillips #00 screws from the hinge brackets extending along the height of the display.

Step 11



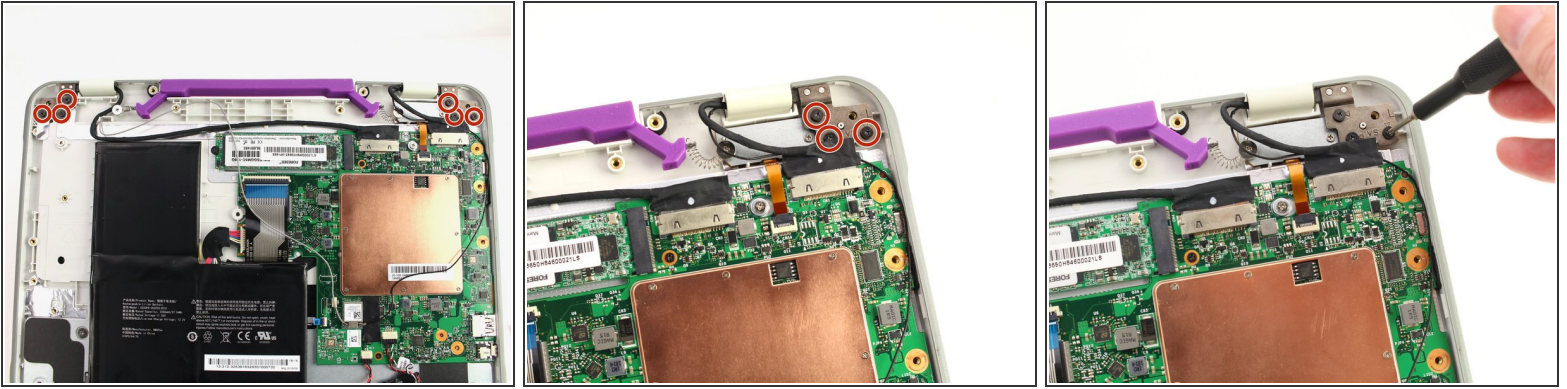
- Peel back the four pieces of black tape.
- Peel back the antenna cable boards off of the display hinges.
- Peel off the silver tape from the display hinges.

Step 12



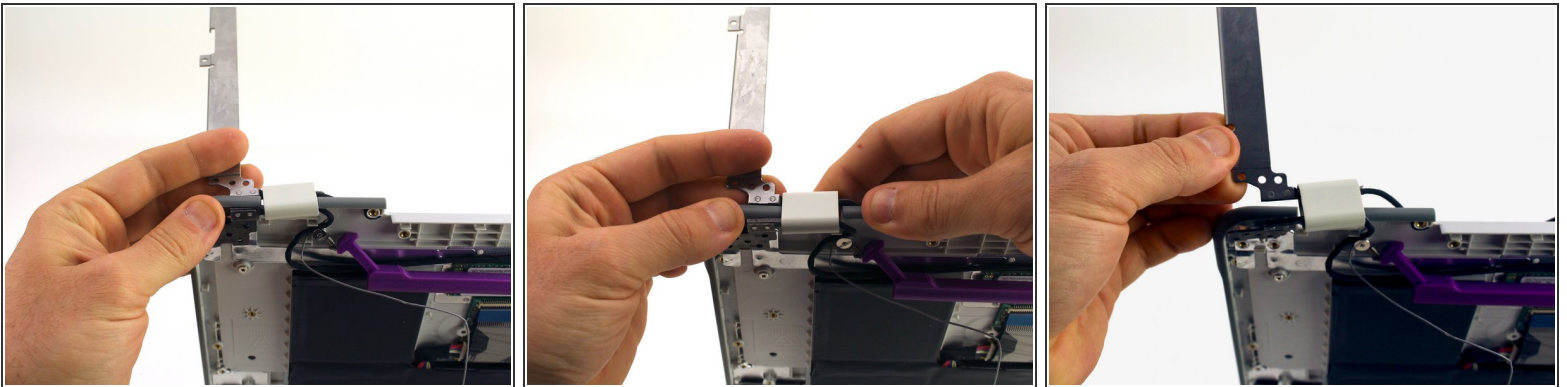
- Lift up both hinges, ensuring that they clear all tape and wires.

Step 13 — Hinge Assembly



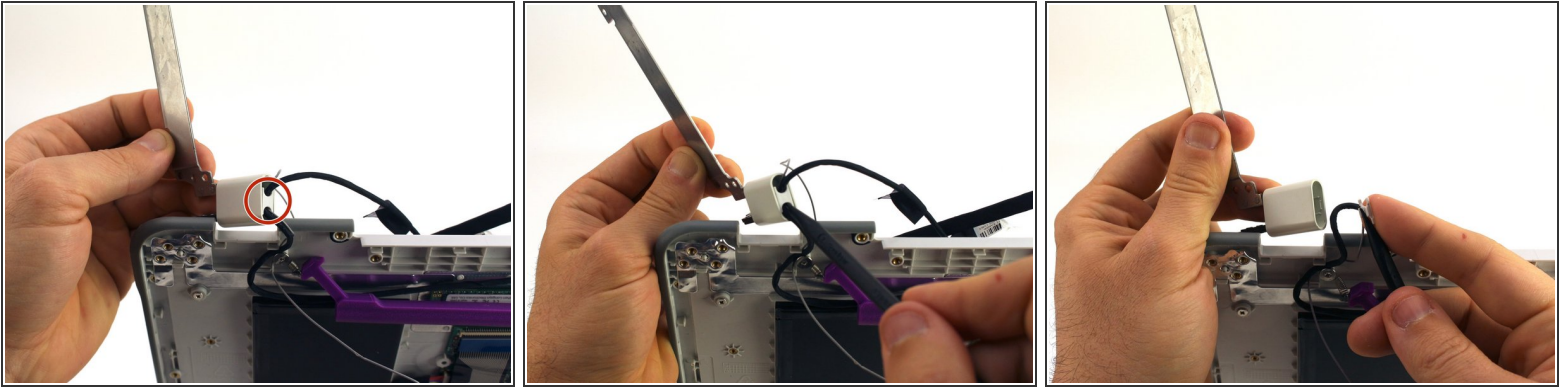
- Flip the laptop over to expose the open bottom case.
- Remove the six 5.6 mm Phillips #00 screws from the hinge brackets on the bottom case.

Step 14



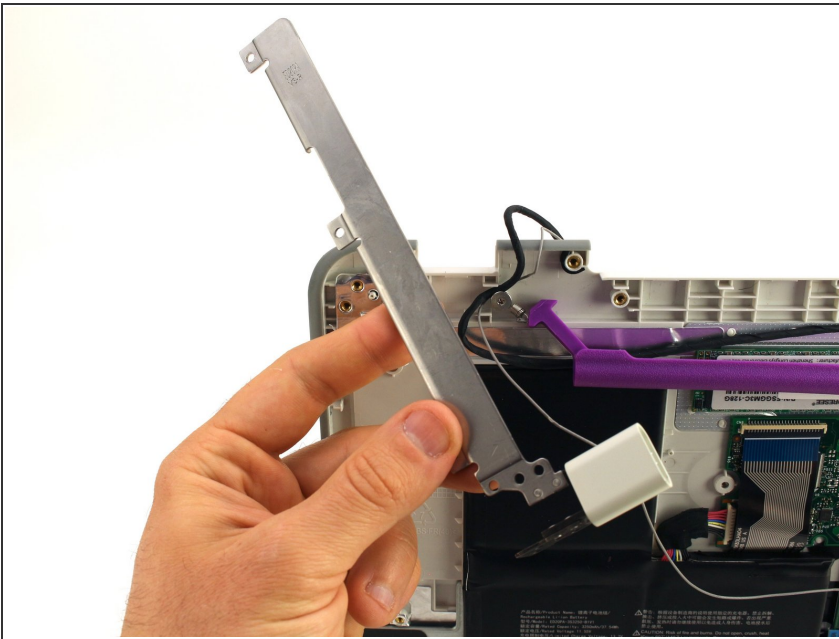
- With the hinge still at a 90° angle, pull the hinge assembly clear from the bottom case.
- ① You will need to apply a modest amount of force to squeeze the edge of the case between the two mounting brackets of the hinge.

Step 15



- Use a spudger to pop out a white plastic cable retaining bit from the hinge body.
- Pull the cables out from the hinge body.

Step 16



- Remove the hinge assembly from the device.
- ⓘ Repeat the same steps for the other side.

To reassemble your device, follow these instructions in reverse order.