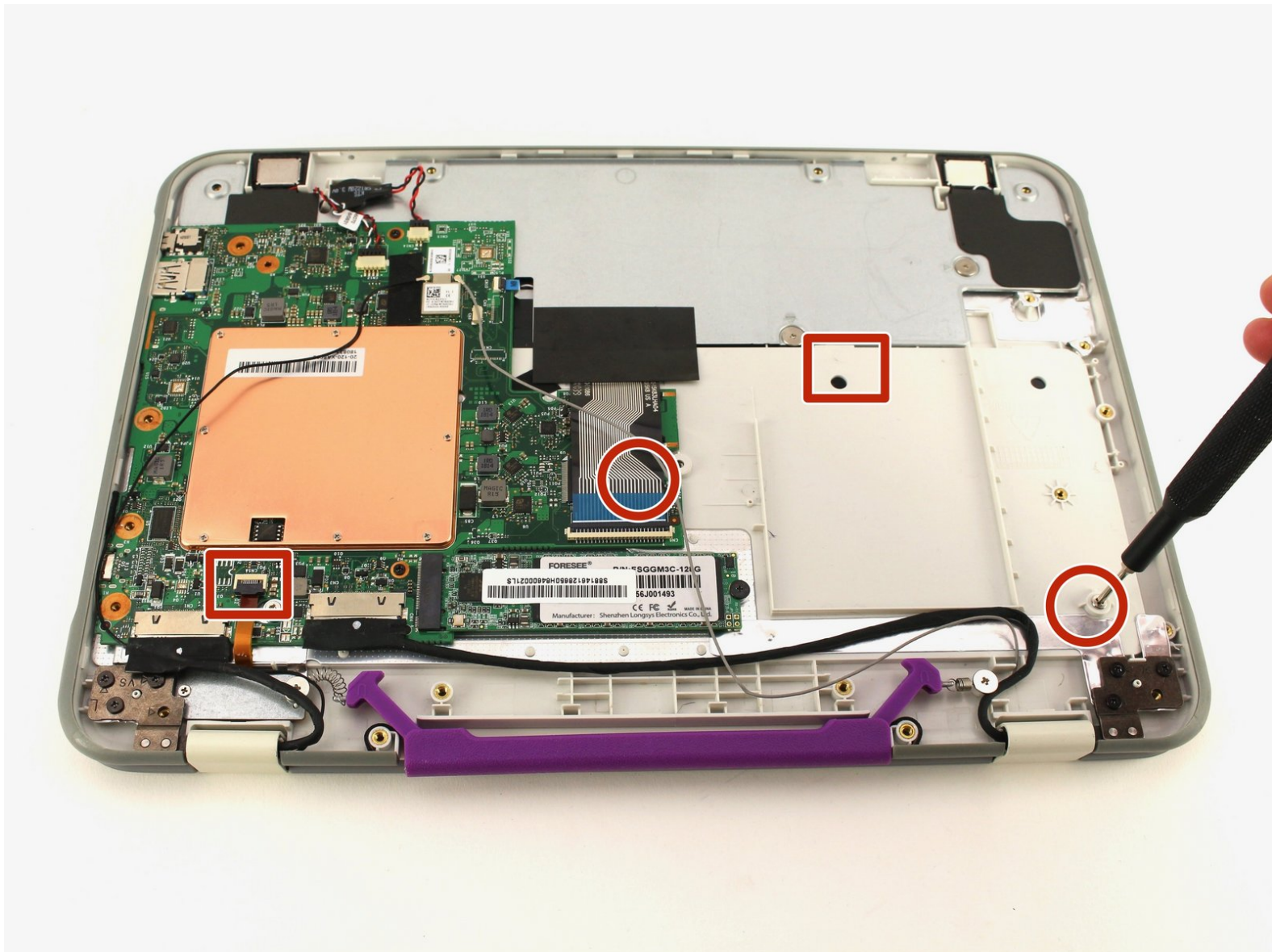




One Education Infinity Keyboard Replacement

How to replace the keyboard in a One Education Infinity laptop (model number A03).

Written By: Rosie the Repair Bear



INTRODUCTION

This guide details the process of removing and replacing the keyboard in the One Education Infinity.

The keyboard is a major input device for the computer, responsible for tracking keystrokes while typing. A malfunctioning keyboard should be easy to diagnose, as the user should notice incorrect input during keystrokes, or the keystroke not being read as intended. If your keyboard is tracking your input erroneously, replacing it will likely fix the issue.

TOOLS:

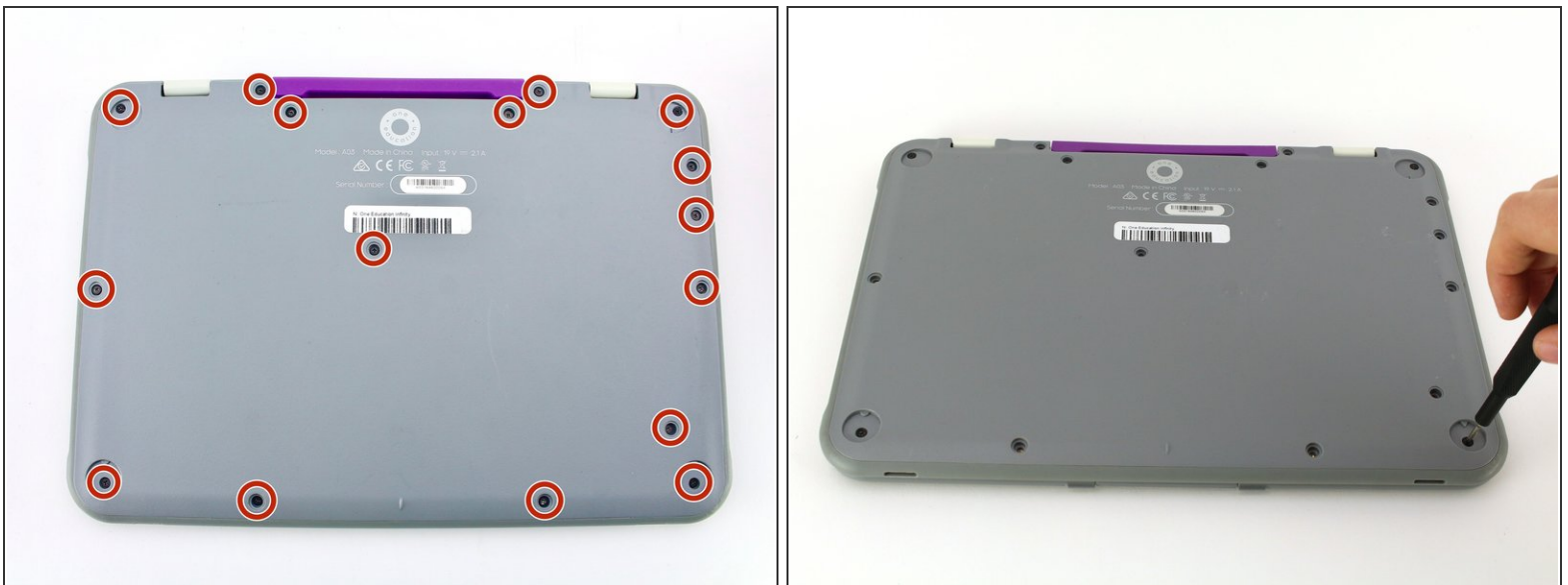
- [Metal Spudger](#) (1)
 - [iFixit Opening Tools](#) (1)
 - [Phillips #00 Screwdriver](#) (1)
 - [Spudger](#) (1)
-

Step 1 — Back Case



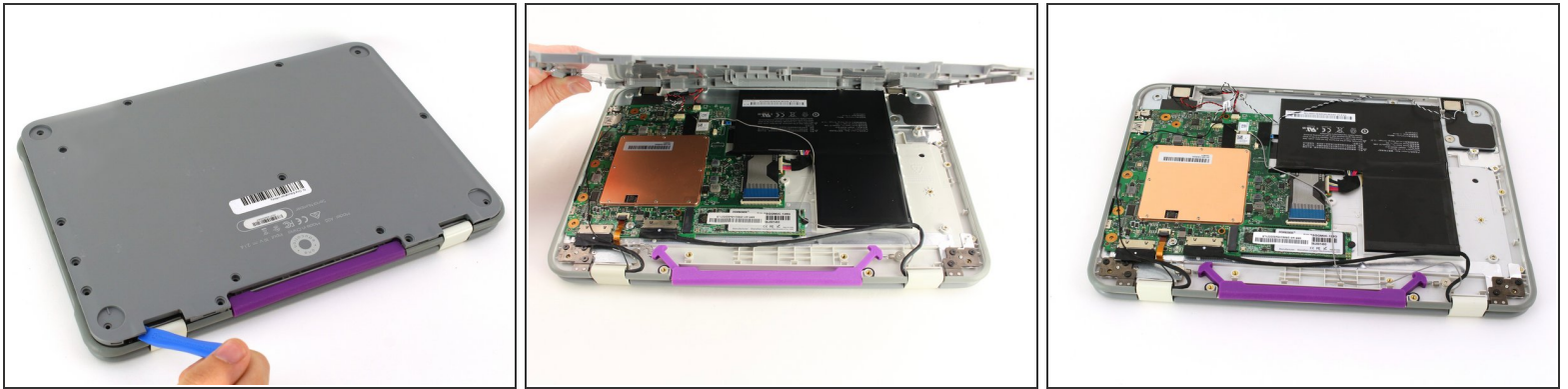
- i** Always power off your device before beginning disassembly.
- Remove the screw covers and rubber feet from the bottom of the laptop with a metal spudger.

Step 2



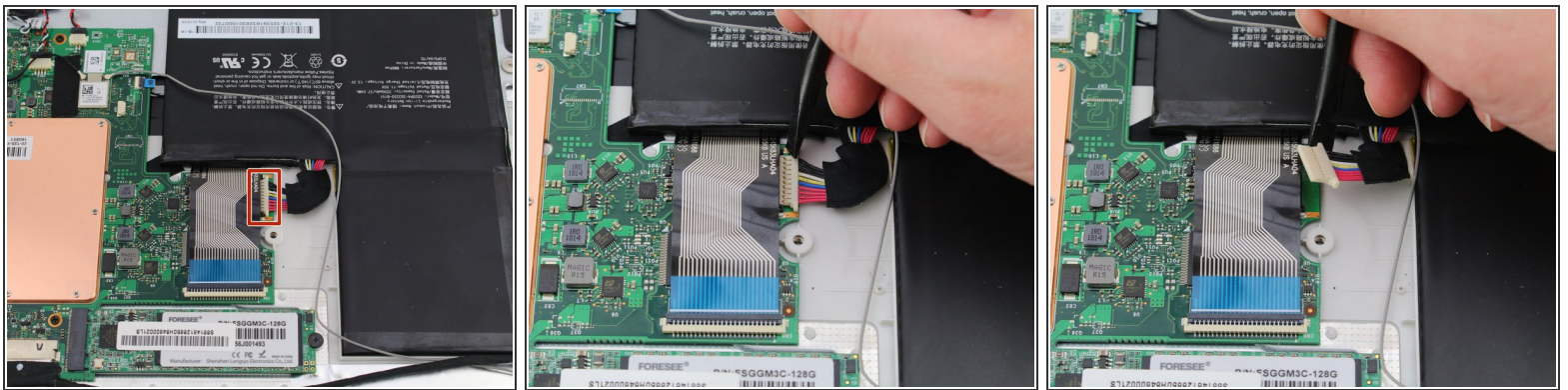
- Using a Phillips #00 screwdriver, remove the sixteen 5.0 mm black screws from the back panel.

Step 3



- Using the iFixit plastic opening tool or spudger, start near the white hinge of the device and lift along the outer edges of the device until all clips are released.
 - Lift the back case off of the device.
- i** Removing the back may create a loud snapping noise.

Step 4 — Battery



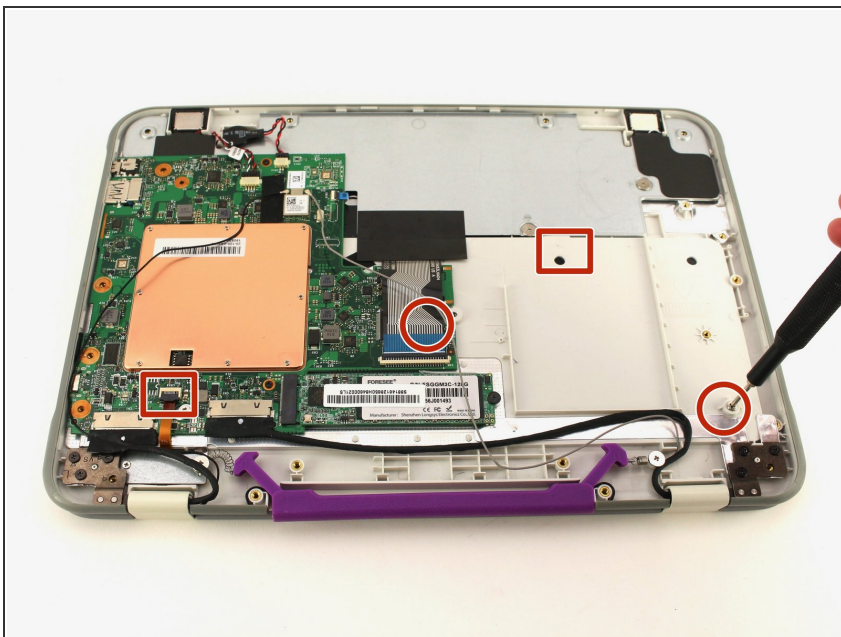
- i** There may be black tape inside your device covering components or holding down wires. This tape is unimportant for the function of the device, and can be removed.
- Carefully wiggle the battery cable to the right and out of the port with a plastic spudger.

Step 5



- Wedge a plastic spudger underneath the battery from the upper edge and slide it carefully along the length of the battery to separate it from the case.
- ⓘ There is a mild adhesive holding down the battery. Take care not to puncture or excessively bend the battery while freeing it from the adhesive.
- Lift the battery out from the internal case.

Step 6 — Keyboard



- Remove the two silver 3.5 mm screws from the two raised mounting points with a Phillips #00 screwdriver.

To reassemble your device, follow these instructions in reverse order.