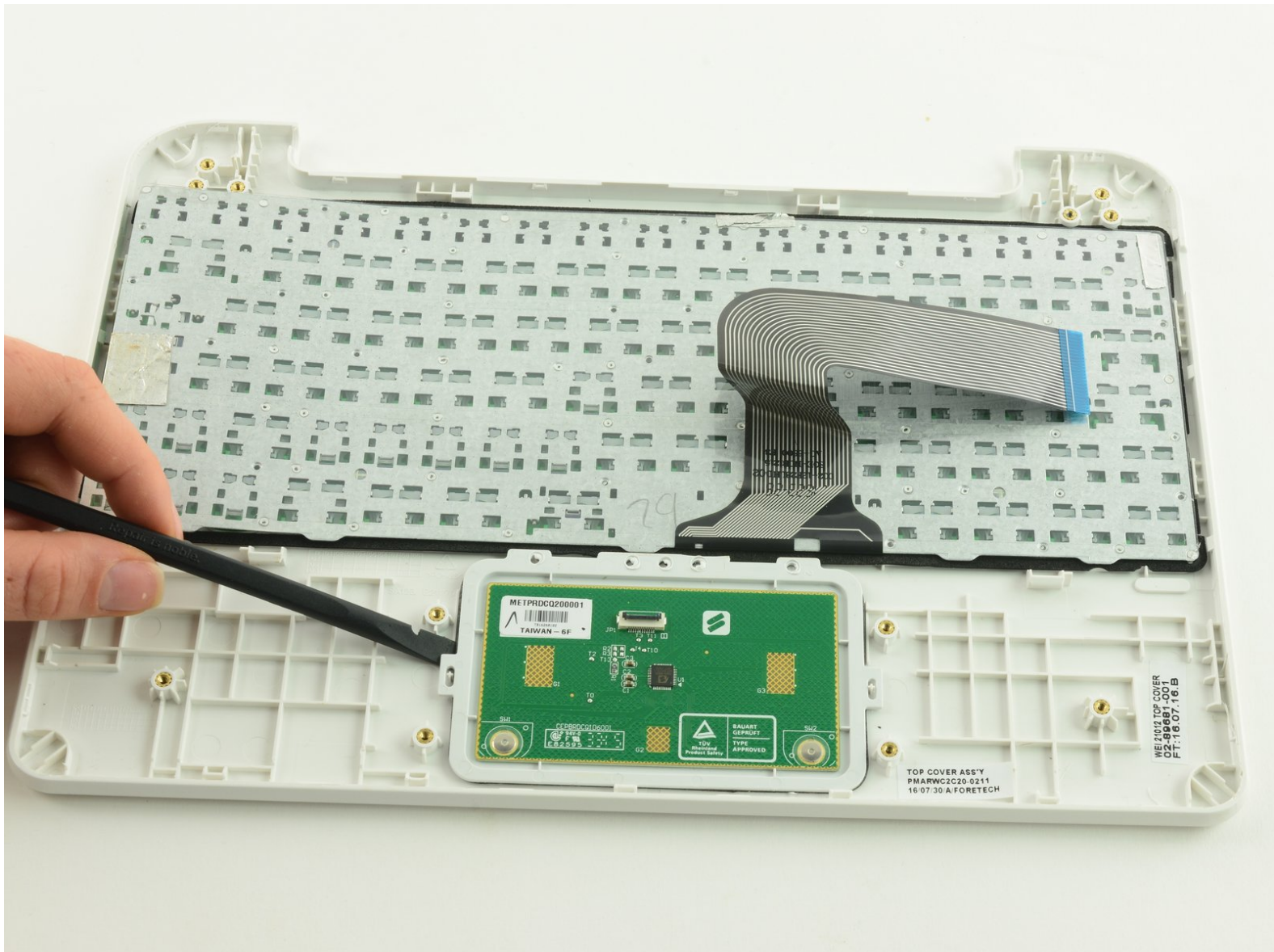




One Education Infinity One Touchpad Replacement

This guide will demonstrate how to remove the touchpad in your One Education Infinity:One laptop.

Written By: Taylor Bratsch



This document was generated on 2019-09-21 03:24:45 PM (MST).

INTRODUCTION

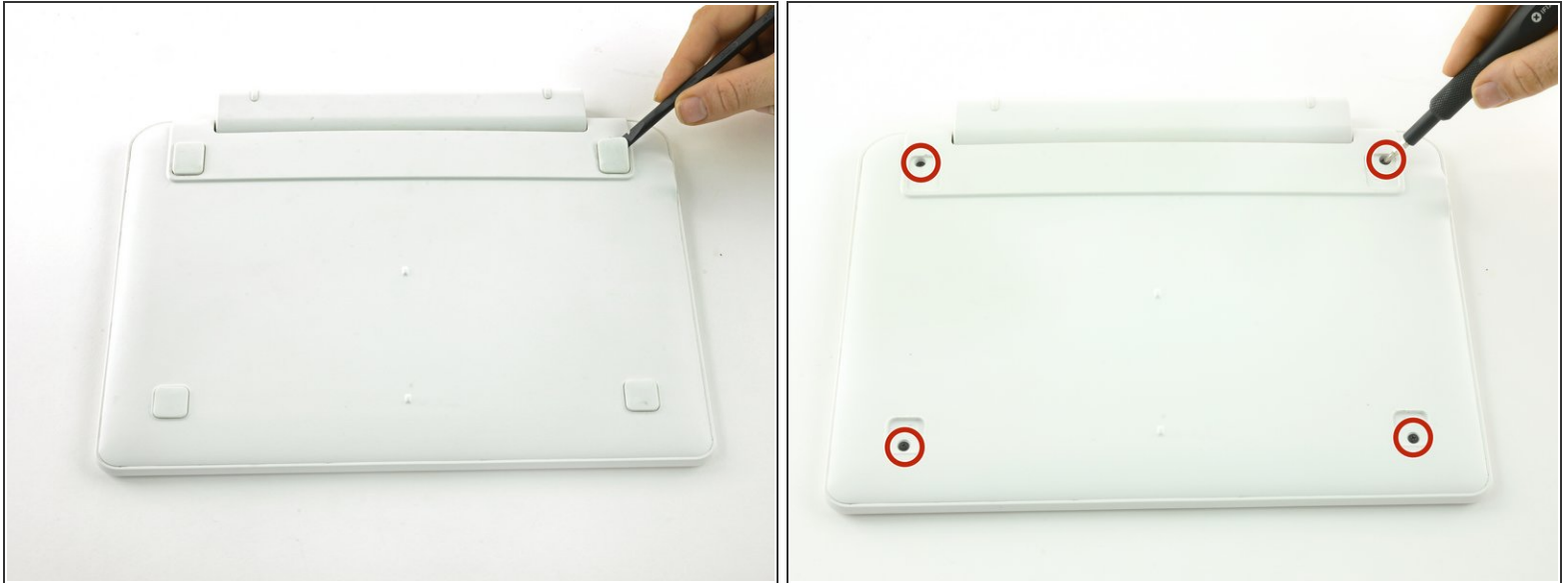
This guide will detail how to replace the touchpad in the One Education Infinity:One laptop.



TOOLS:

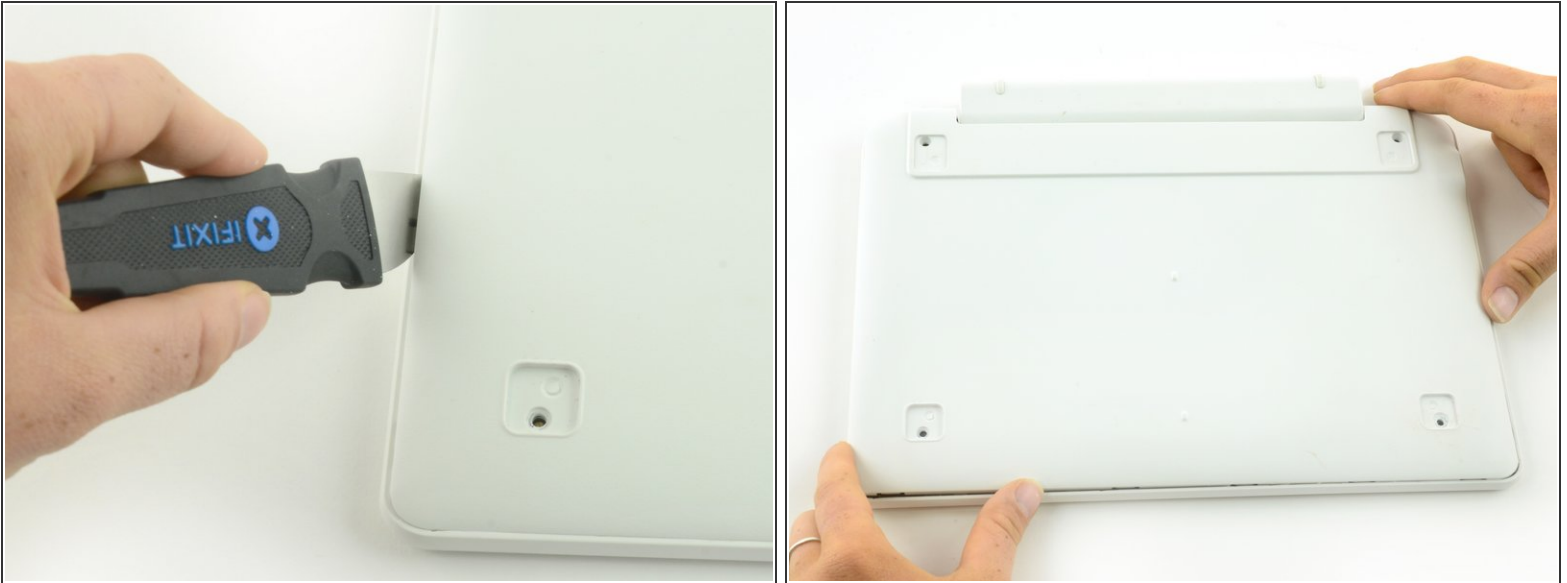
- [Heavy-Duty Spudger](#) (1)
 - [Tweezers](#) (1)
 - [Jimmy](#) (1)
 - [Phillips #00 Screwdriver](#) (1)
 - [Phillips #000 Screwdriver](#) (1)
-

Step 1 — Back Case



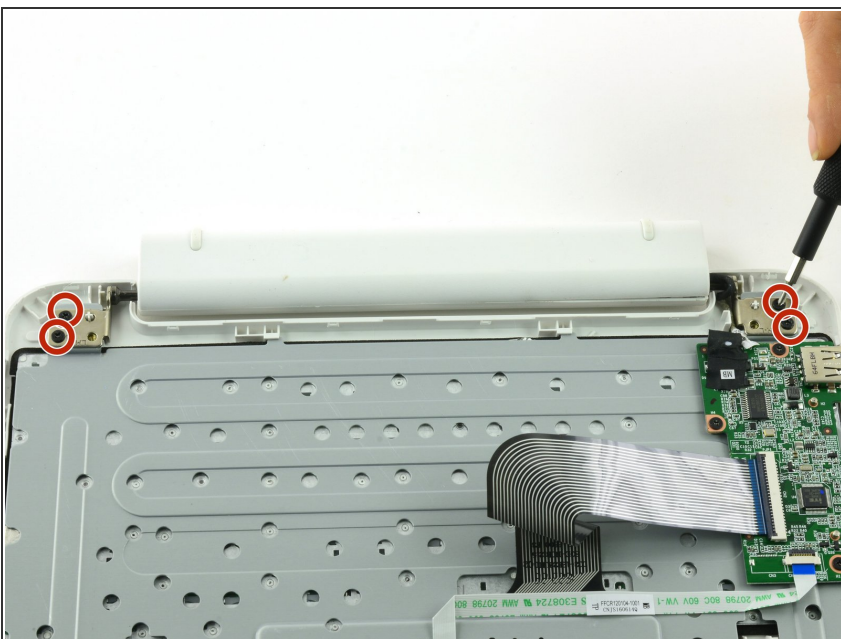
- Use a spudger to pry the four rubber pads away from the bottom of the case.
- Use a Phillips #00 screwdriver to unscrew the four 6.4 mm screws.

Step 2



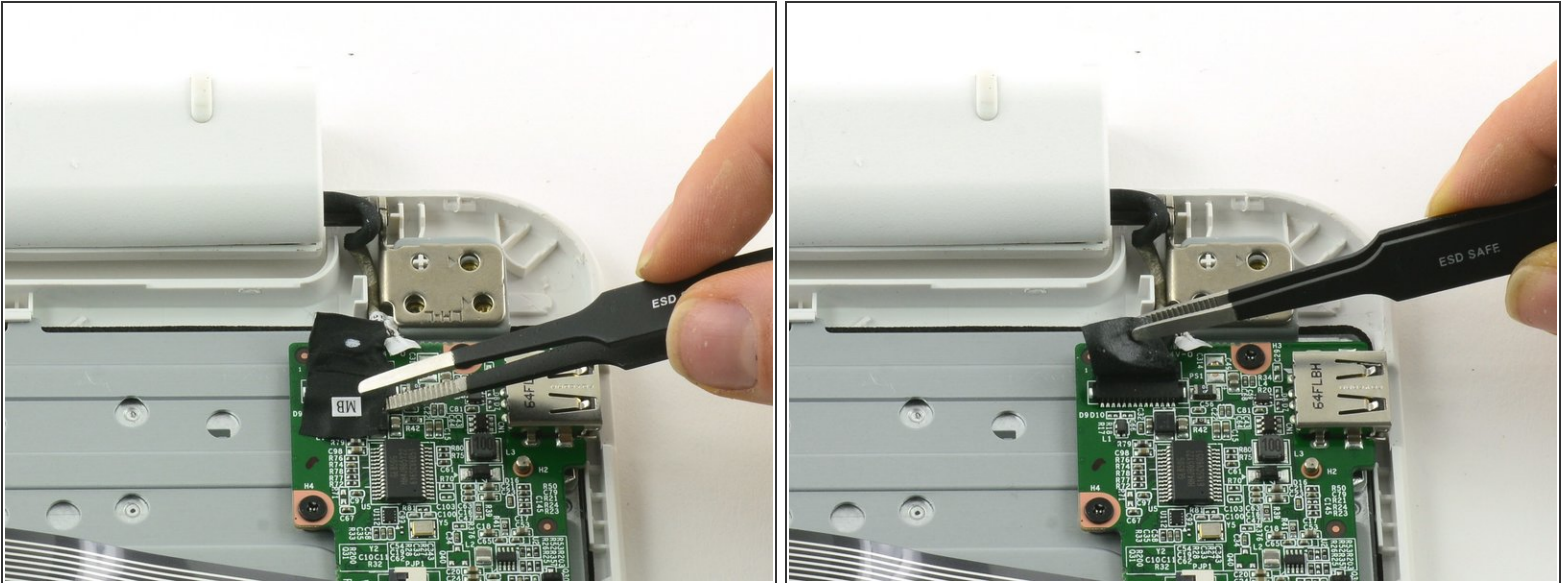
- Insert a Jimmy or other prying tool into the seam on the edge of the casing.
- Trace along the edges of the device until all clips are released.
- Lift the back case away from the device.

Step 3



- Use a Phillips #00 screwdriver to unscrew the four 6.4mm screws on the hinge mounts.

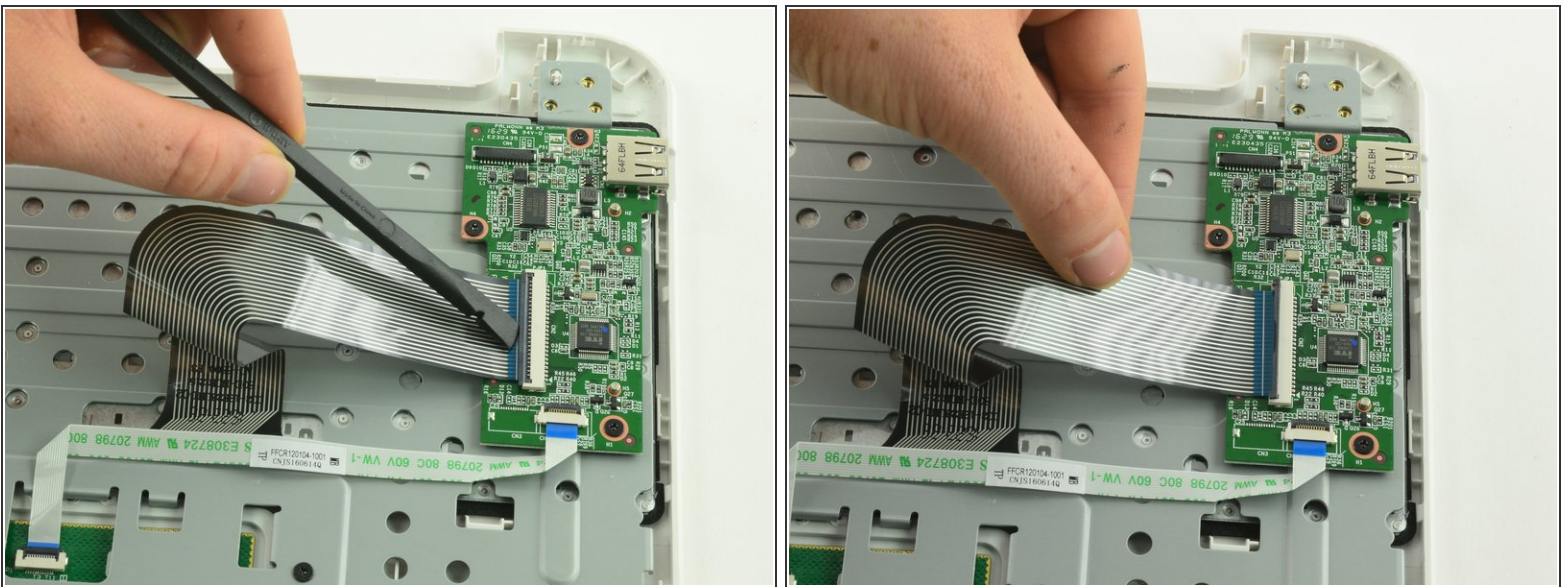
Step 4



- Use tweezers to lift the fabric cover and hinge connector away from the daughterboard.

⚠ Always use ESD safe tools when working with delicate electrical components.

Step 5 — Daughterboard



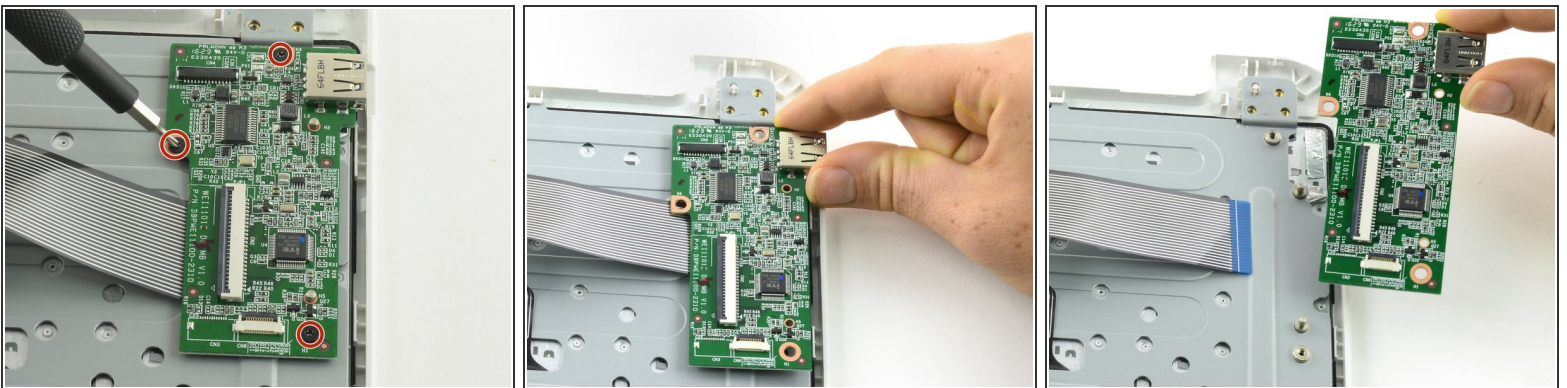
- Flip up the black retaining flap on the ZIF connector holding the large grey ribbon cable in place.
- Pull the ribbon cable straight out of the ZIF connector.

Step 6



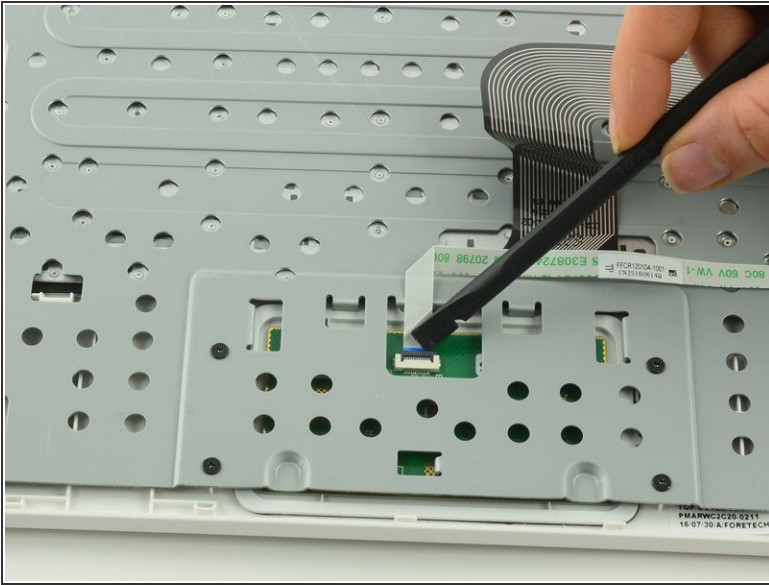
- Use the flat end of a spudger to flip up the black tab on the smaller ZIF connector.
- Use tweezers to pull the ribbon cable straight out of the connector.

Step 7



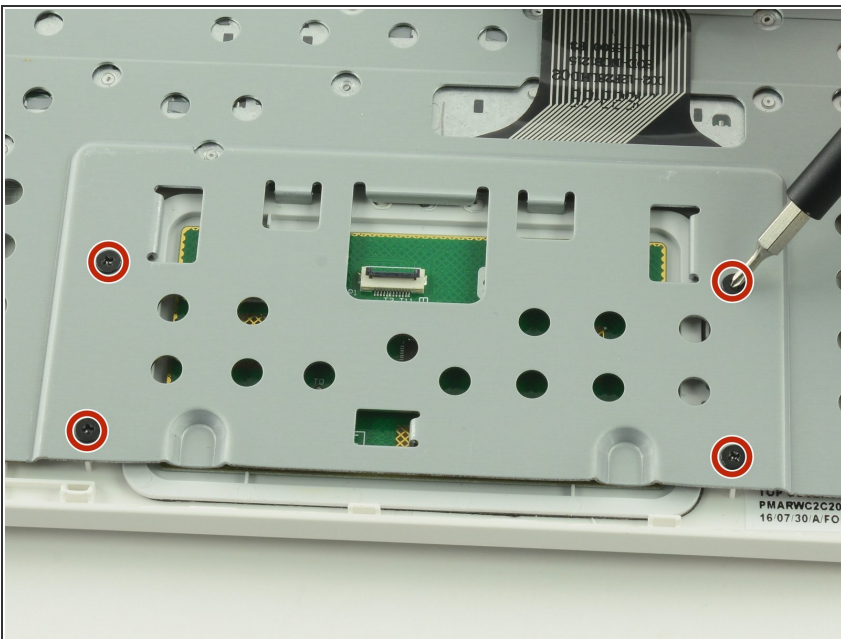
- Use a Phillips #000 screwdriver to unscrew the three 3.4mm screws.
- Lift the daughterboard away from the device to remove.

Step 8 — Keyboard Frame Prerequisite



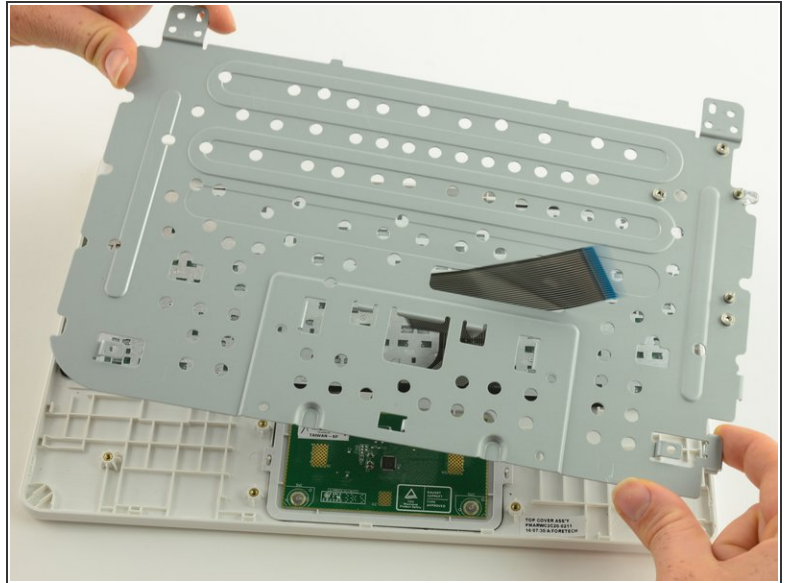
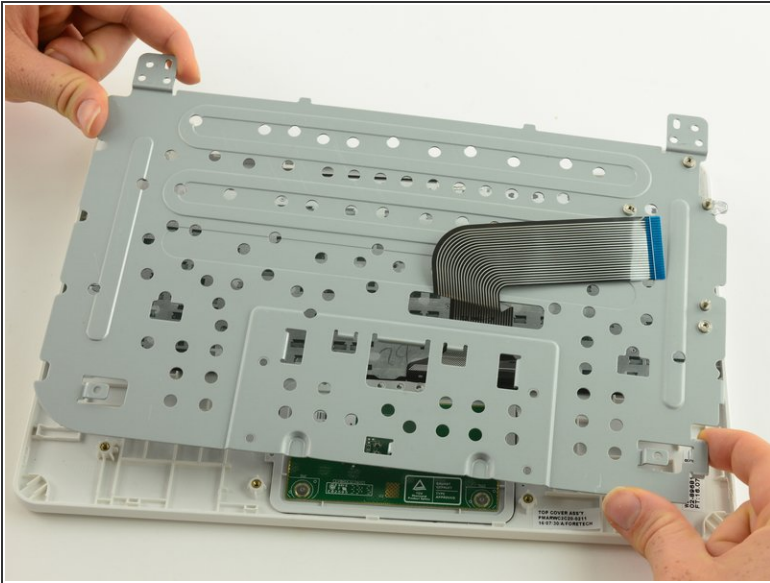
- Use a spudger to lift up the black retaining flap on the touchpad's ZIF connector.
- Pull the ribbon cable straight back to remove.

Step 9



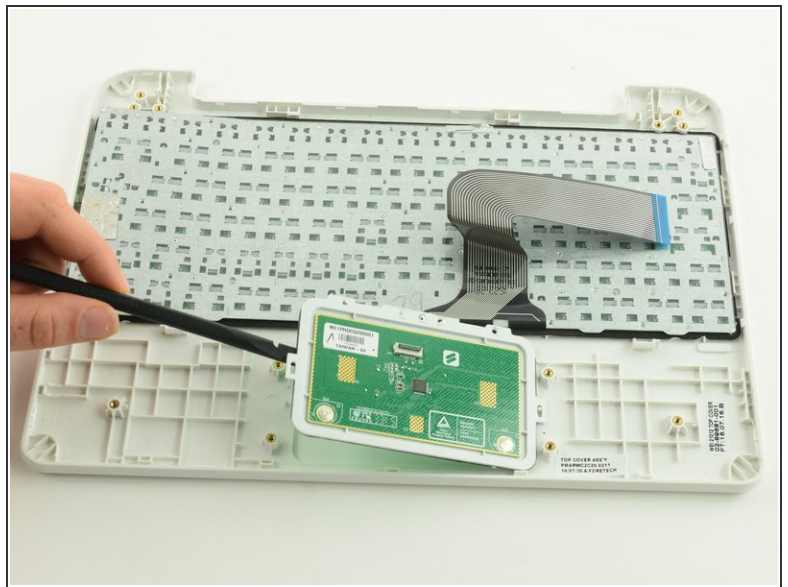
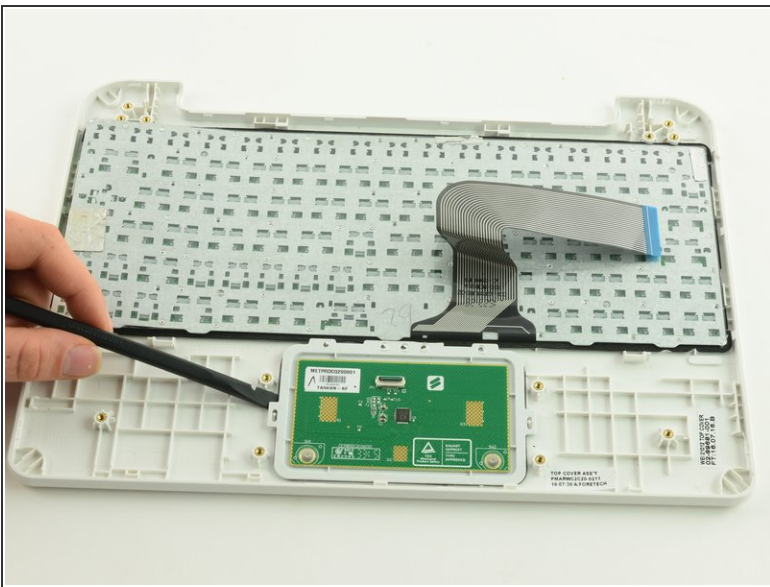
- Use a Phillips #00 screwdriver to unscrew the four 6.4mm screws holding the touchpad in place.

Step 10



- Feed the ribbon cable through the hole in the metal frame.
- Left the metal frame away from the device.

Step 11 — Touchpad



- Use a spudger to pry the touchpad away from the device.

To reassemble your device, follow these instructions in reverse order.