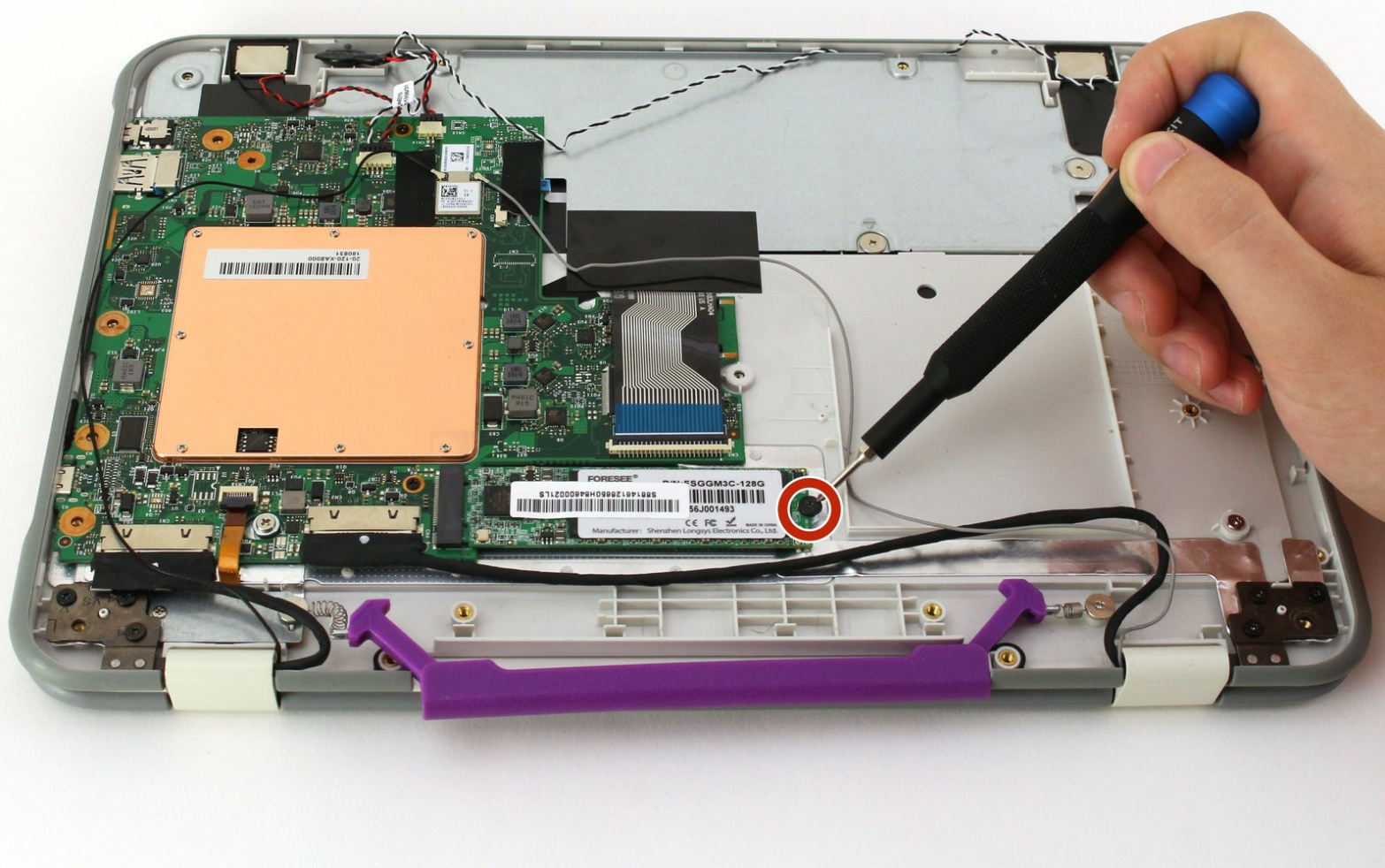




One Education Infinity Solid State Drive Replacement

Use this guide to replace the solid state drive in your One Education Infinity laptop.

Written By: Caitlin Feldewerth



INTRODUCTION

This guide will detail how to safely remove the solid state drive (SSD) from the One Education Infinity laptop. The model number for the Infinity is A03. This device can be recognized by its dark grey exterior, light grey interior, purple carrying handle, and rotating camera above the screen.

The Infinity was released in Spring 2019 and is **NOT** the same as the Infinity: One.




TOOLS:

- [Metal Spudger](#) (1)
 - [Spudger](#) (1)
 - [Phillips #00 Screwdriver](#) (1)
 - [iFixit Opening Tools](#) (1)
-

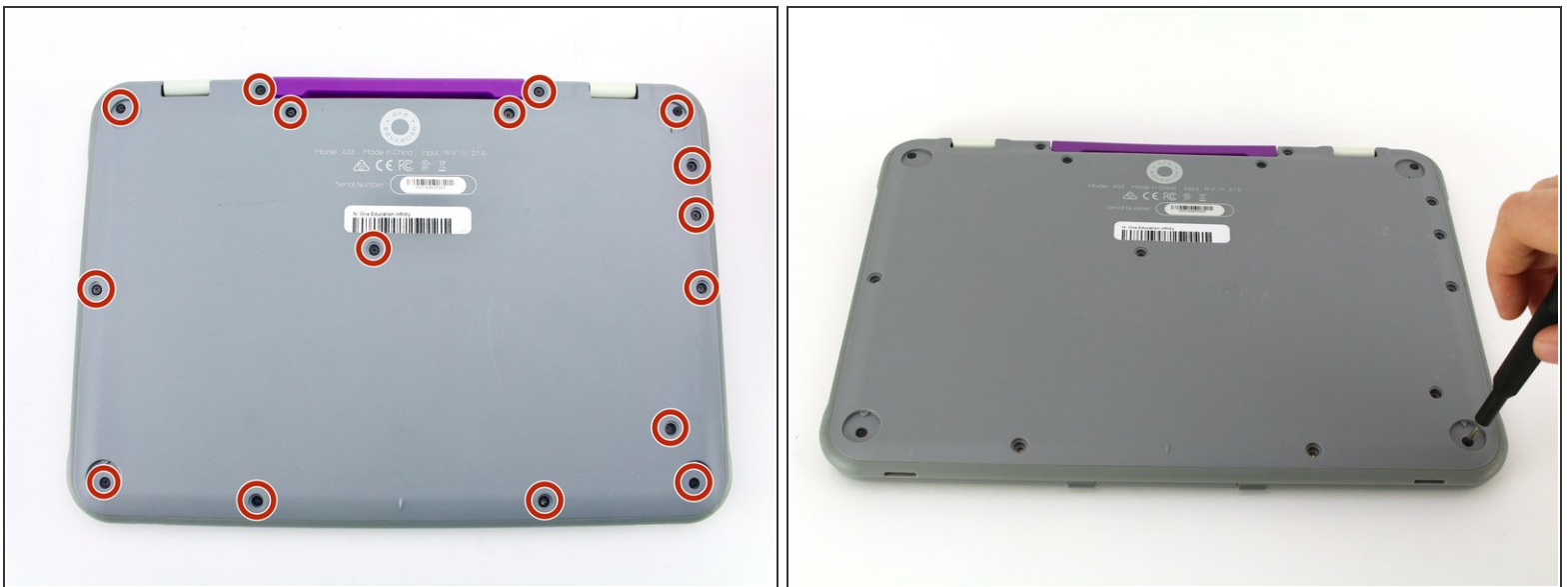
Step 1 — Back Case



 Always power off your device before beginning disassembly.

- Remove the screw covers and rubber feet from the bottom of the laptop with a metal spudger.

Step 2



- Using a Phillips #00 screwdriver, remove the sixteen 5.0 mm black screws from the back panel.

Step 3



- Using the iFixit plastic opening tool or spudger, start near the white hinge of the device and lift along the outer edges of the device until all clips are released.
 - Lift the back case off of the device.
- i** Removing the back may create a loud snapping noise.

Step 4 — Battery



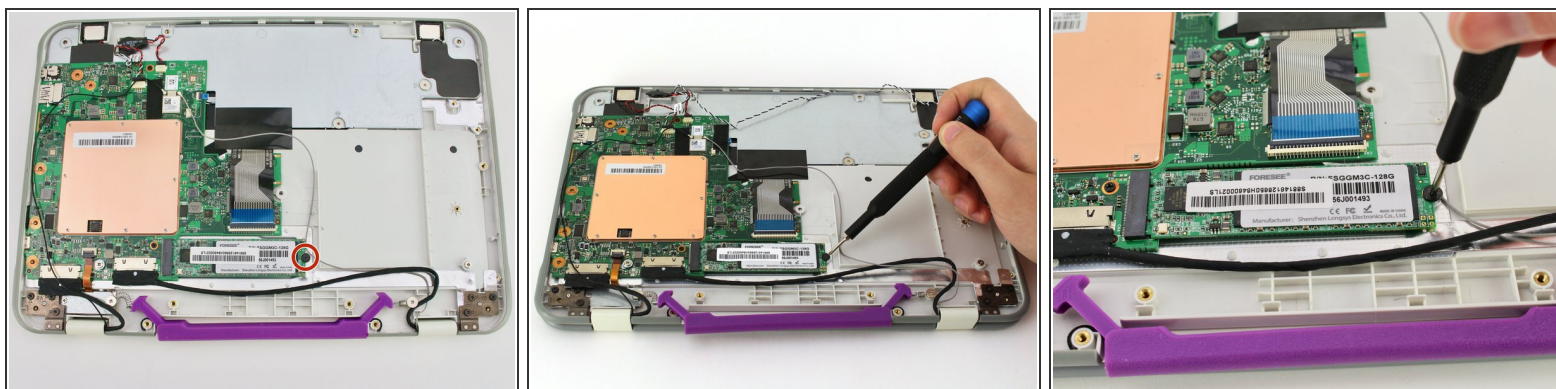
- i** There may be black tape inside your device covering components or holding down wires. This tape is unimportant for the function of the device, and can be removed.
- Carefully wiggle the battery cable to the right and out of the port with a plastic spudger.

Step 5



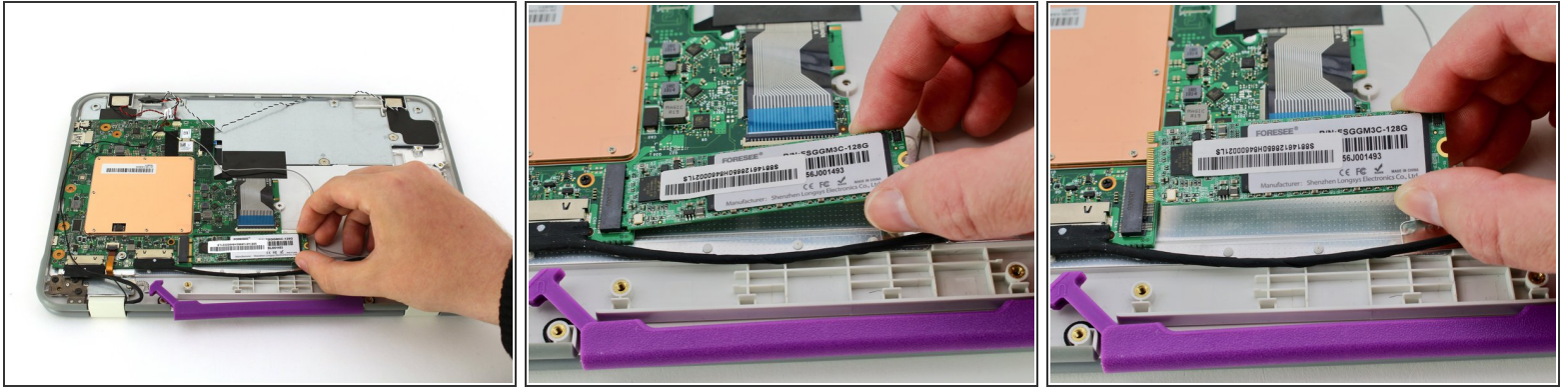
- Wedge a plastic spudger underneath the battery from the upper edge and slide it carefully along the length of the battery to separate it from the case.
- ⓘ There is a mild adhesive holding down the battery. Take care not to puncture or excessively bend the battery while freeing it from the adhesive.
- Lift the battery out from the internal case.

Step 6 — Solid State Drive



- Use a Phillips #00 screwdriver to remove the single 2mm black screw from the SSD.

Step 7



- Grab the SSD with your fingers and slide it slowly to the right and out of its port.

To reassemble your device, follow these instructions in reverse order.