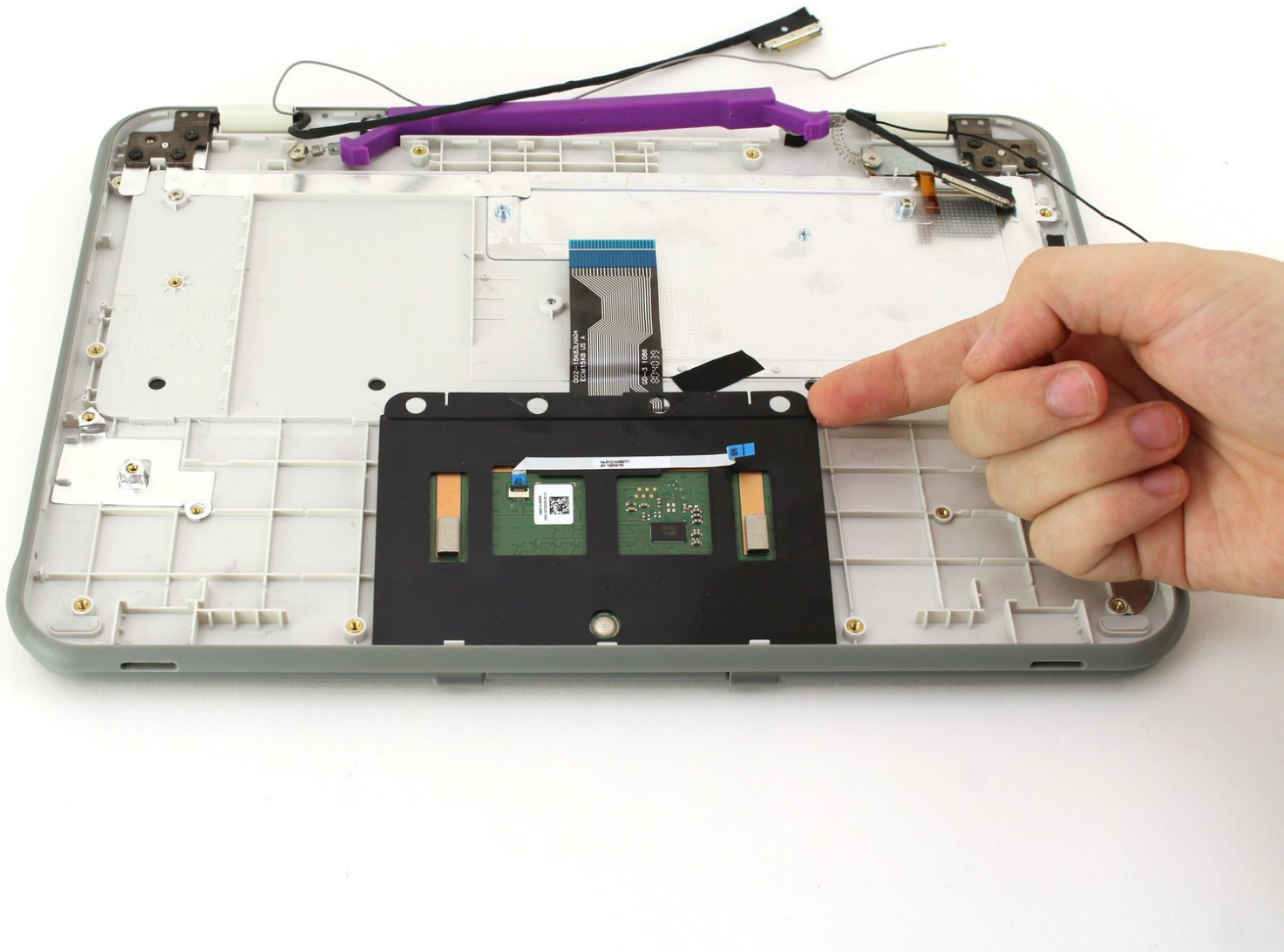




One Education Infinity Touchpad Replacement

Use this guide to replace the touchpad in your One Education Infinity laptop.

Written By: Jason Childers



INTRODUCTION

This guide will detail how to safely remove the touchpad from the One Education Infinity laptop. The model number for the Infinity is A03. This device can be recognized by its dark grey exterior, light grey interior, purple carrying handle, and rotating camera above the screen.

The Infinity was released in Spring 2019 and is **NOT** the same as the Infinity: One.




TOOLS:

- [Metal Spudger](#) (1)
 - [Spudger](#) (1)
 - [Phillips #00 Screwdriver](#) (1)
 - [iFixit Opening Tools](#) (1)
-

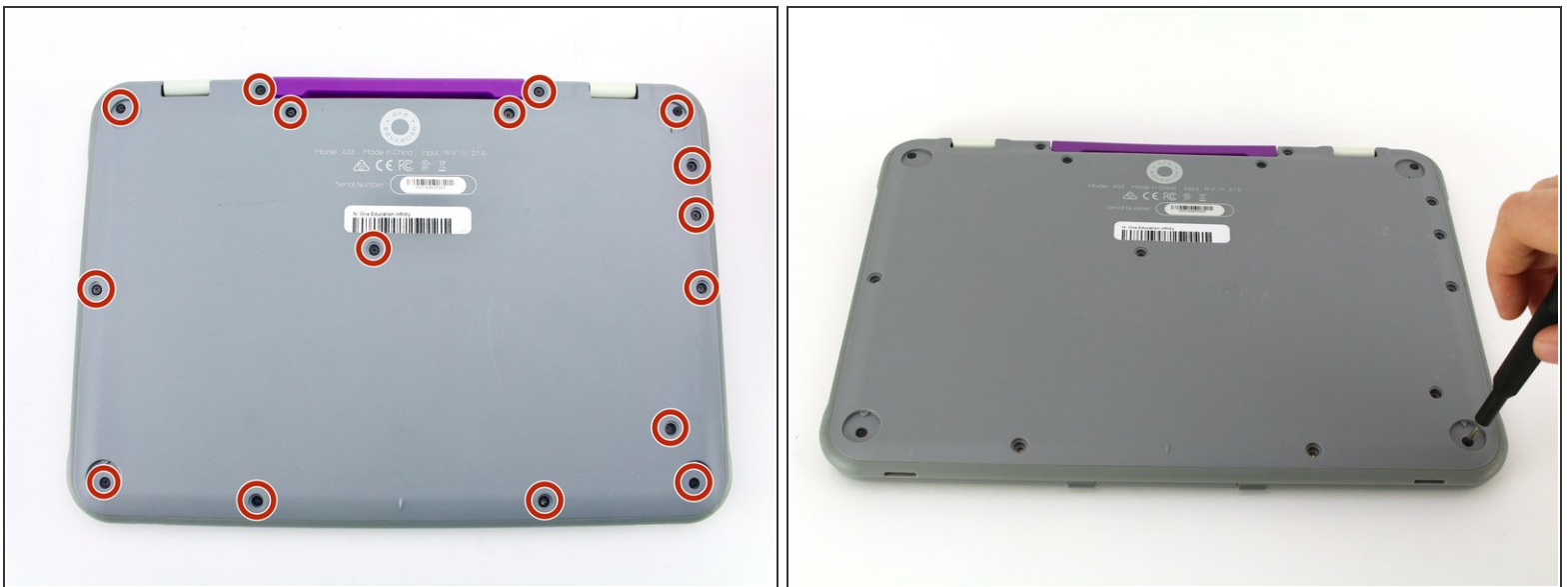
Step 1 — Back Case



 Always power off your device before beginning disassembly.

- Remove the screw covers and rubber feet from the bottom of the laptop with a metal spudger.

Step 2



- Using a Phillips #00 screwdriver, remove the sixteen 5.0 mm black screws from the back panel.

Step 3



- Using the iFixit plastic opening tool or spudger, start near the white hinge of the device and lift along the outer edges of the device until all clips are released.
 - Lift the back case off of the device.
- i** Removing the back may create a loud snapping noise.

Step 4 — Battery



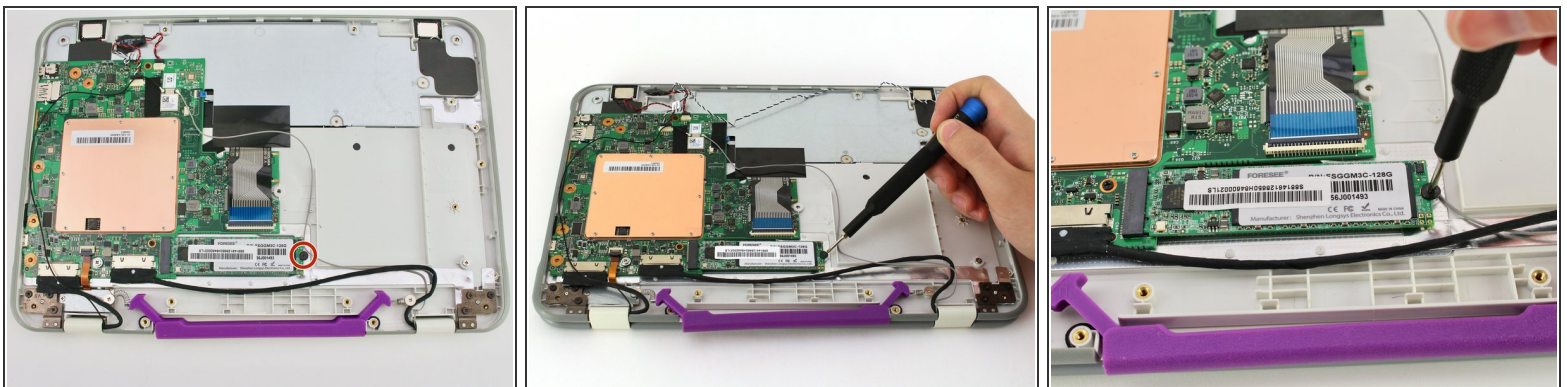
- i** There may be black tape inside your device covering components or holding down wires. This tape is unimportant for the function of the device, and can be removed.
- Carefully wiggle the battery cable to the right and out of the port with a plastic spudger.

Step 5



- Wedge a plastic spudger underneath the battery from the upper edge and slide it carefully along the length of the battery to separate it from the case.
- ⓘ There is a mild adhesive holding down the battery. Take care not to puncture or excessively bend the battery while freeing it from the adhesive.
- Lift the battery out from the internal case.

Step 6 — Solid State Drive



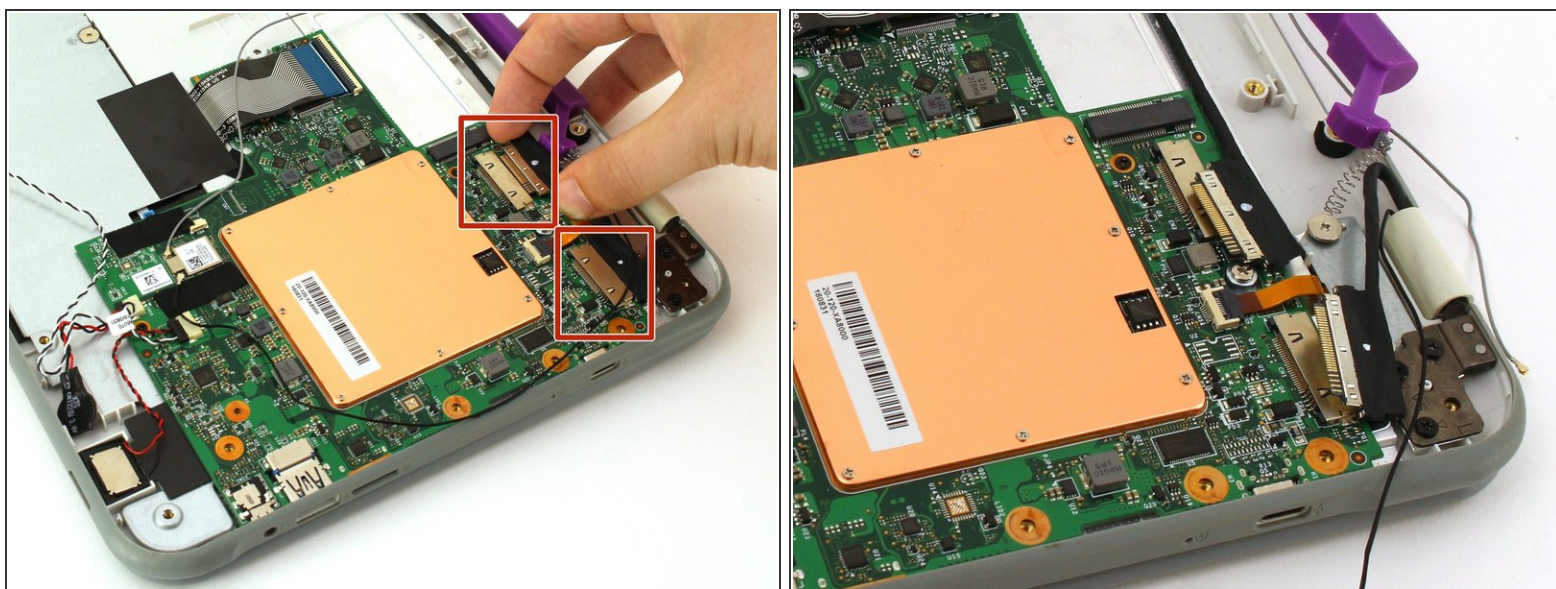
- Use a Phillips #00 screwdriver to remove the single 2mm black screw from the SSD.

Step 7



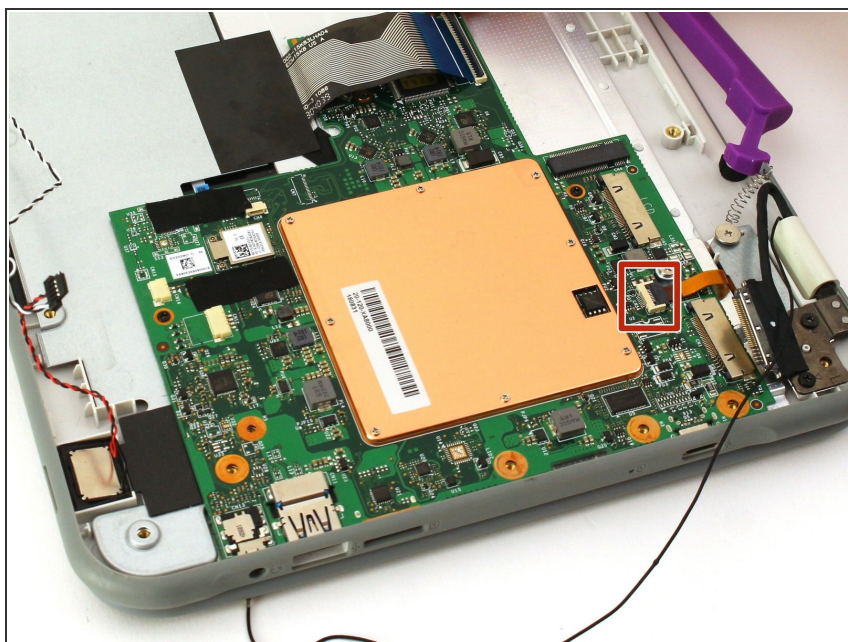
- Grab the SSD with your fingers and slide it slowly to the right and out of its port.

Step 8 — Motherboard



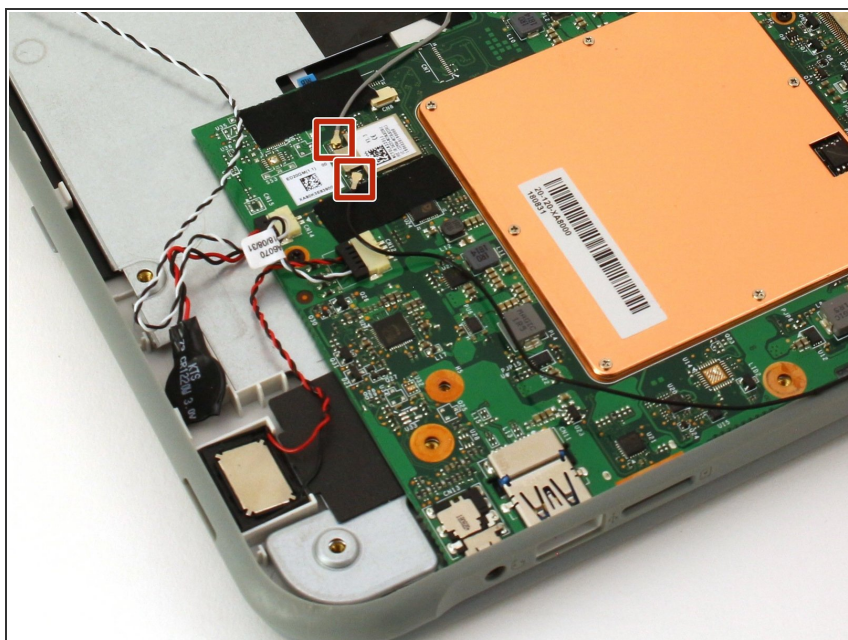
- Using your fingers, carefully pull the two ribbon cable locking clips out from their ports.

Step 9



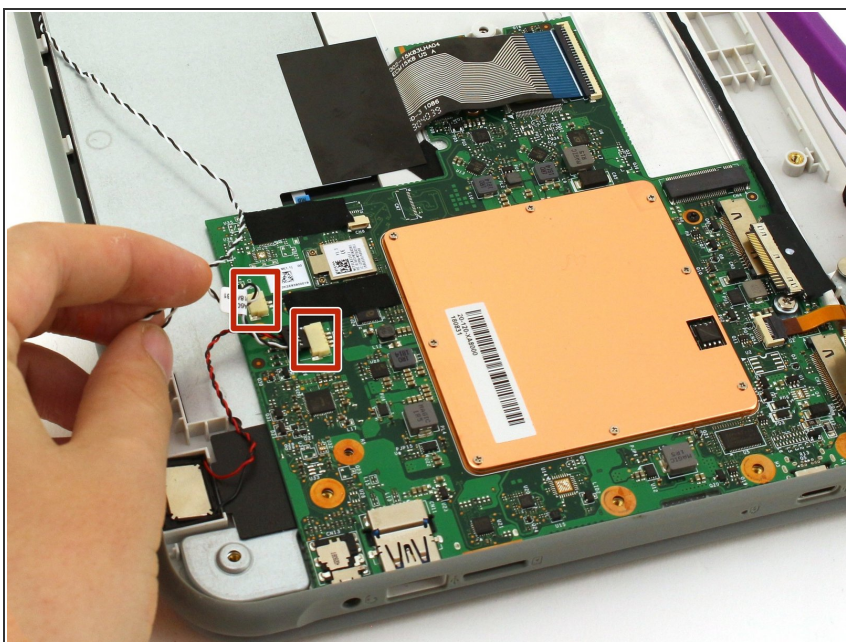
- Using your fingers, carefully lift up the black tab and then unplug the gold ribbon cable.

Step 10



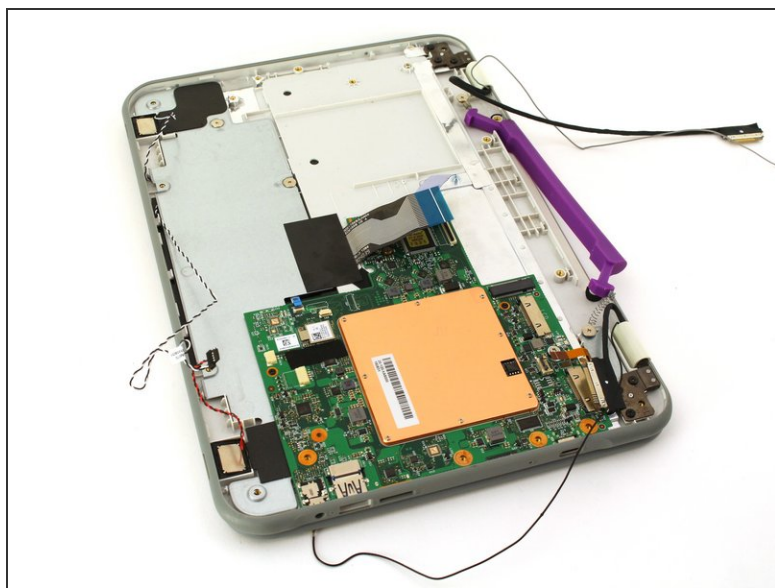
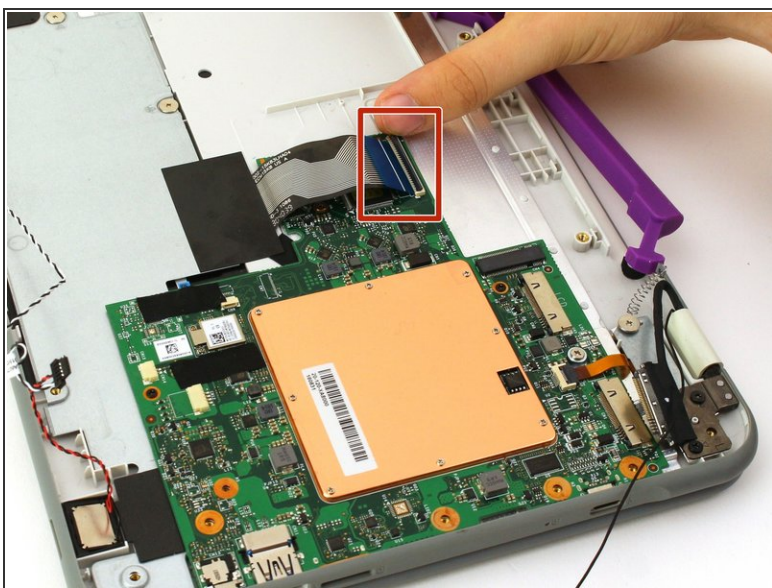
- Using a spudger, carefully unplug the black and grey wires by popping them up off the wireless card.

Step 11



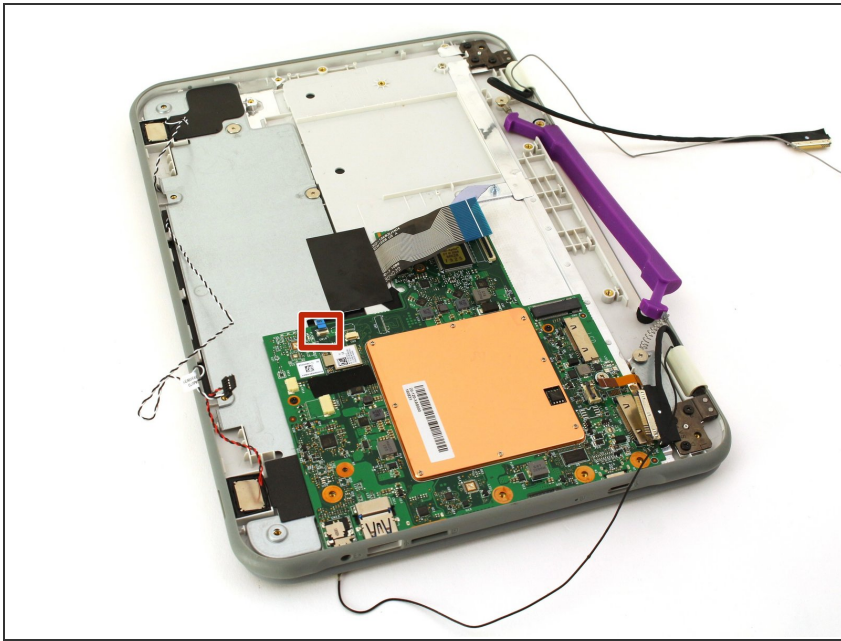
- Using your fingers, carefully unplug the two speaker wires from the motherboard.

Step 12



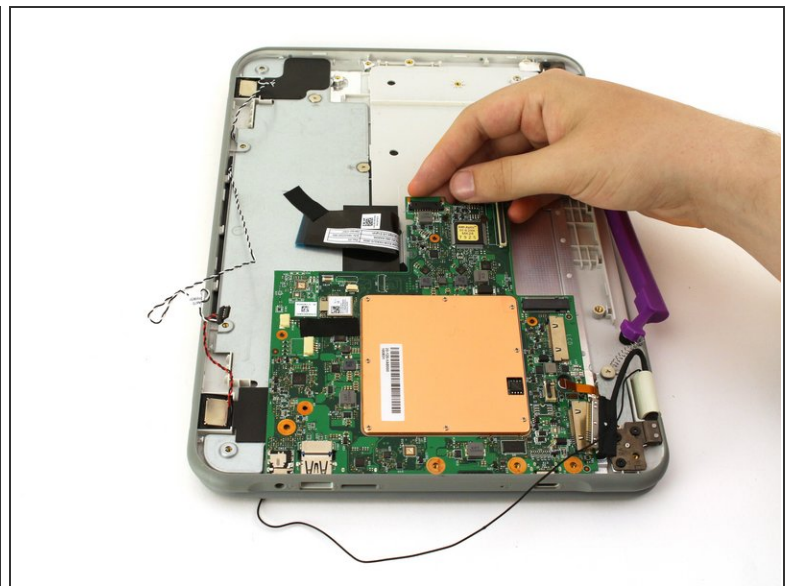
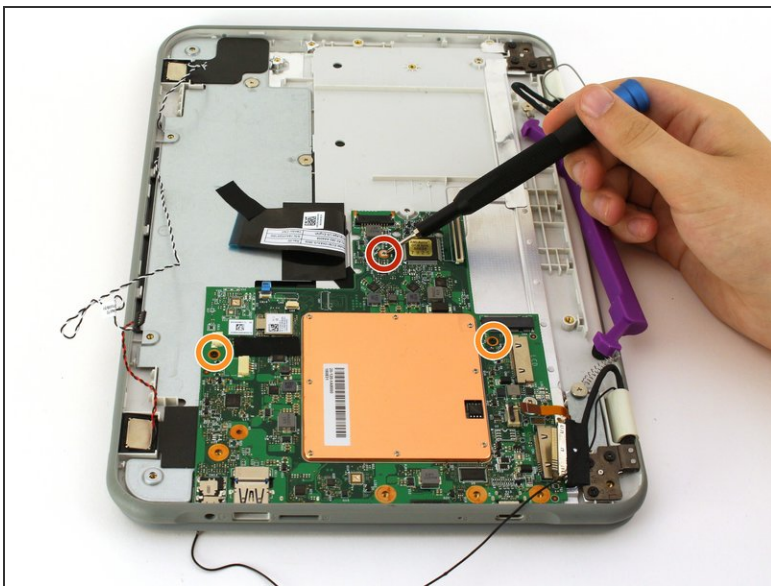
- Using your fingers or an iFixit opening tool, carefully lift the black tab on top of the ZIF connector and remove the ribbon cable.

Step 13



- Using your fingers, carefully lift up the black tab and then unplug the blue ribbon cable.

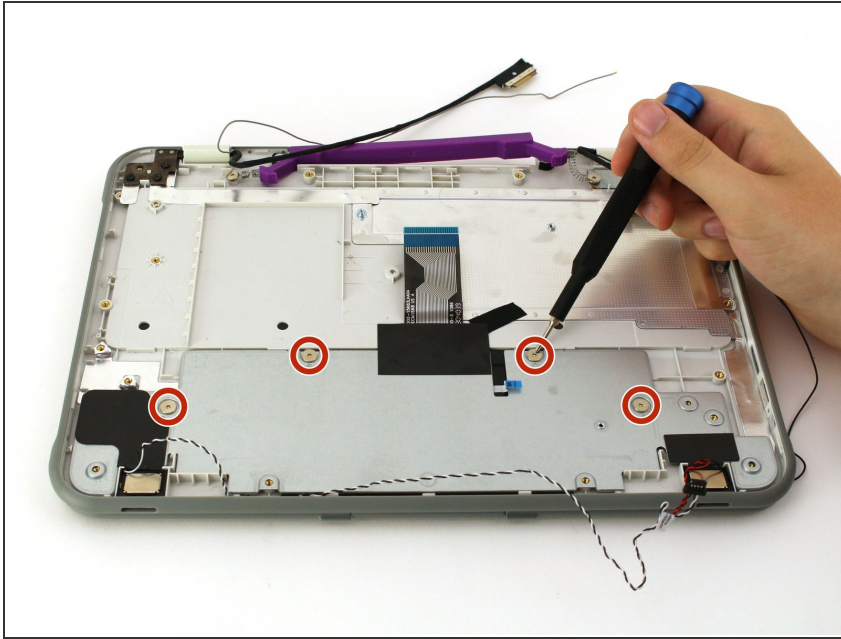
Step 14



- Using a Phillips #00 screwdriver, remove the single 4 mm silver screw from beneath the ribbon cable.
- Using a Phillips #00 screwdriver, remove the two 2.5 mm black screws.
- Using your fingers, carefully lift the motherboard out of the internal panel.

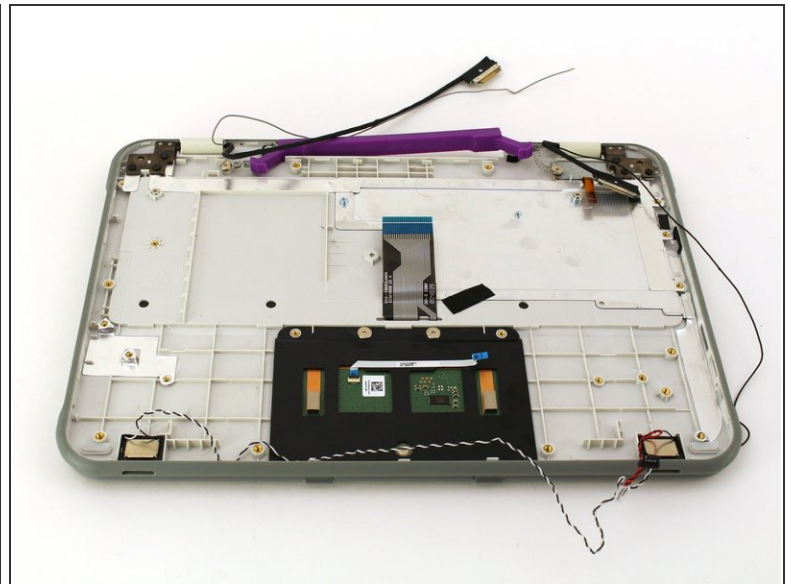
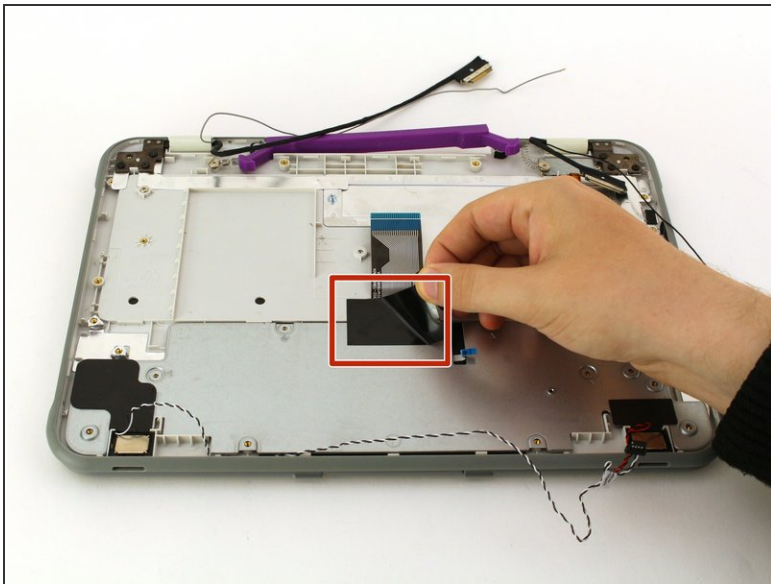
This document was generated on 2020-04-05 10:14:57 PM (MST).

Step 15 — Touchpad



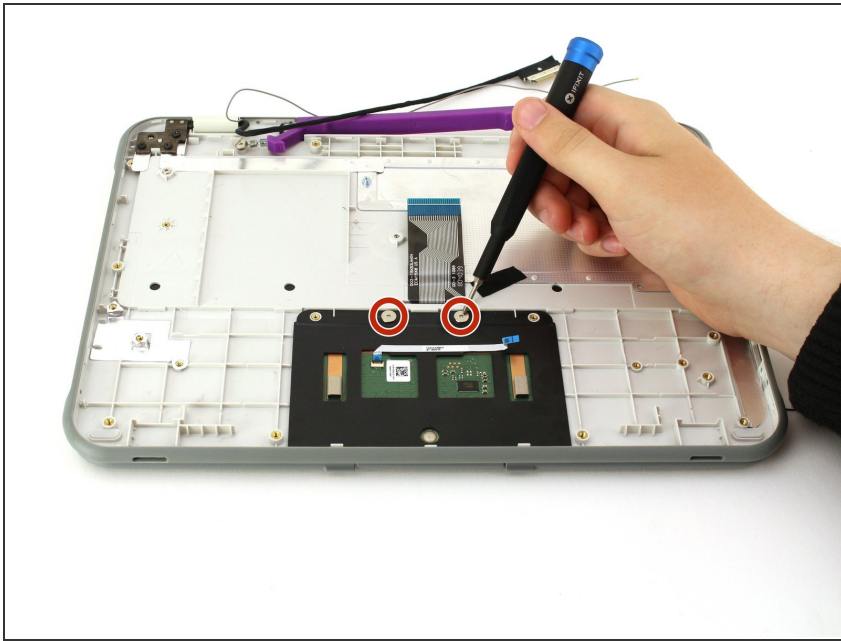
- Using a Phillips #00 screwdriver, remove the four 2mm silver screws.

Step 16



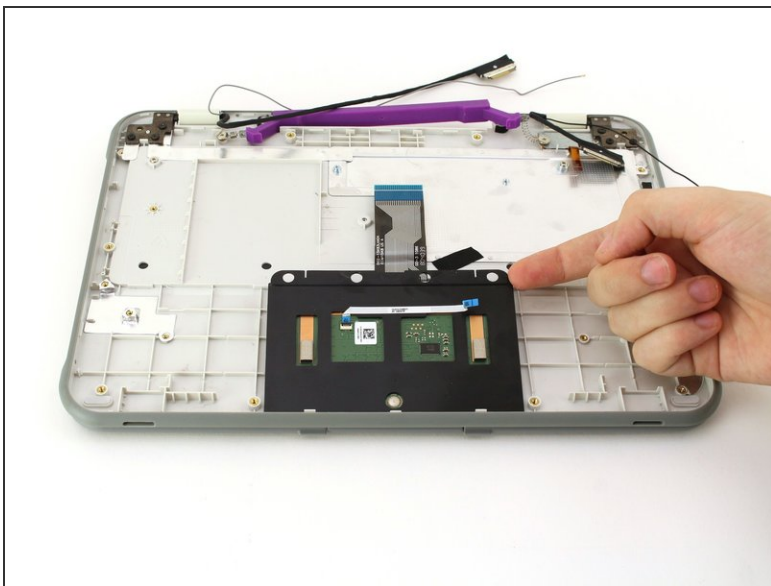
- Peel back the black tape.
- Using your fingers, carefully lift the metal plate out of the internal panel.

Step 17



- Using a Phillips #00 screwdriver, remove the two 2mm silver screws.

Step 18



- Using your fingers, carefully lift the touch-pad out of the internal panel.

To reassemble your device, follow these instructions in reverse order.