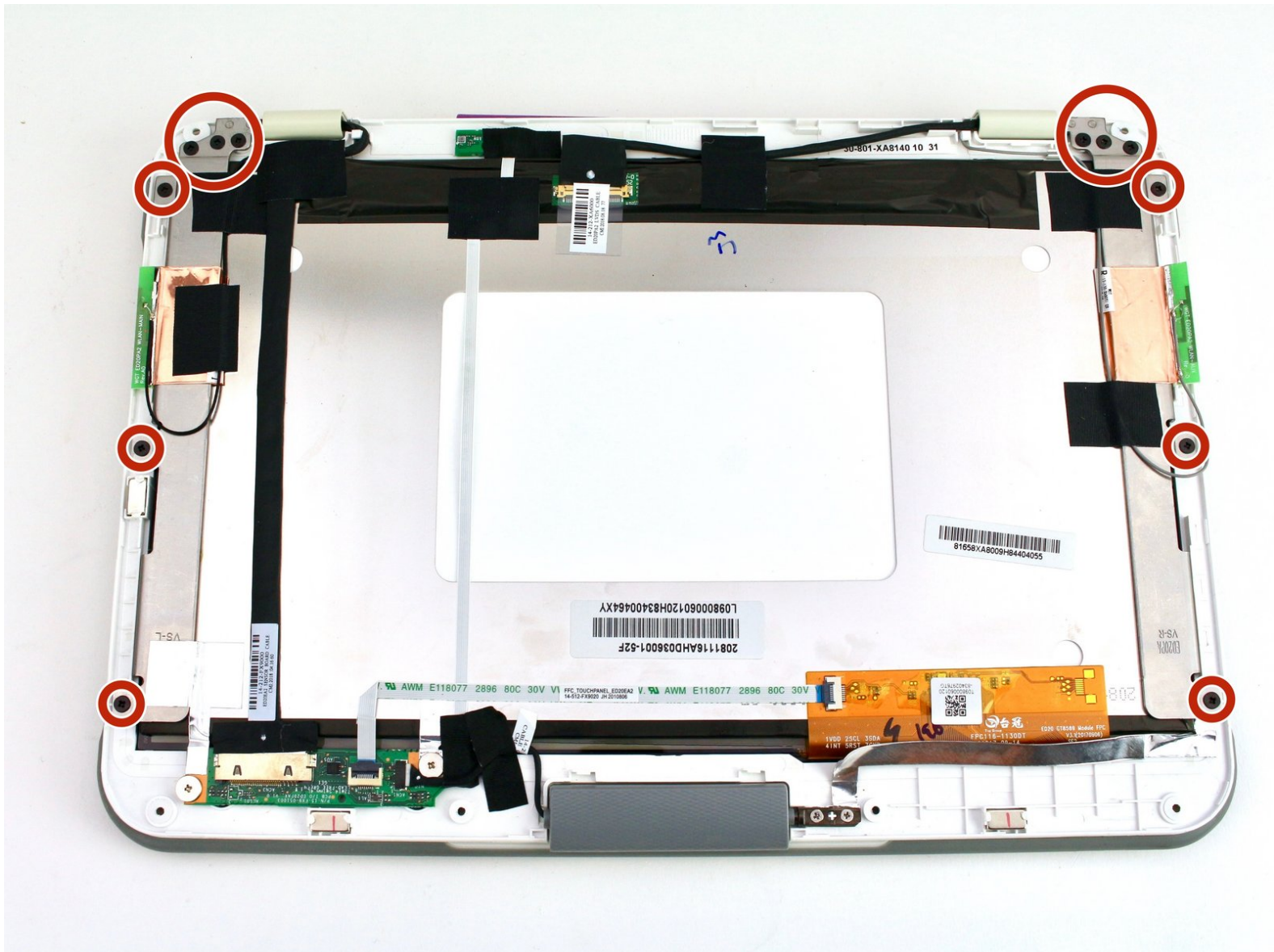




One Education Infinity Upper Hinge Assembly Replacement

This guide will show the process of how to disconnect the upper half of the hinge from the display assembly on your One Education Infinity.

Written By: Austin Blakely



This document was generated on 2020-04-06 08:19:37 AM (MST).

INTRODUCTION

This prerequisite guide for the One Education: Infinity showcases the process of disconnecting the display assembly from the upper portion of the hinge mechanism for removal.

Additionally, note that this guide has the user remove the battery prior to disassembling the upper case to prevent any electrical damage while disconnecting the display cables. However, the same effect can be achieved by simply disconnecting the battery cable, so the battery removal in step 5 can be skipped to save a bit of time and effort.




TOOLS:

- [Metal Spudger](#) (1)
 - [iFixit Opening Tools](#) (1)
 - [Phillips #00 Screwdriver](#) (1)
 - [Spudger](#) (1)
-

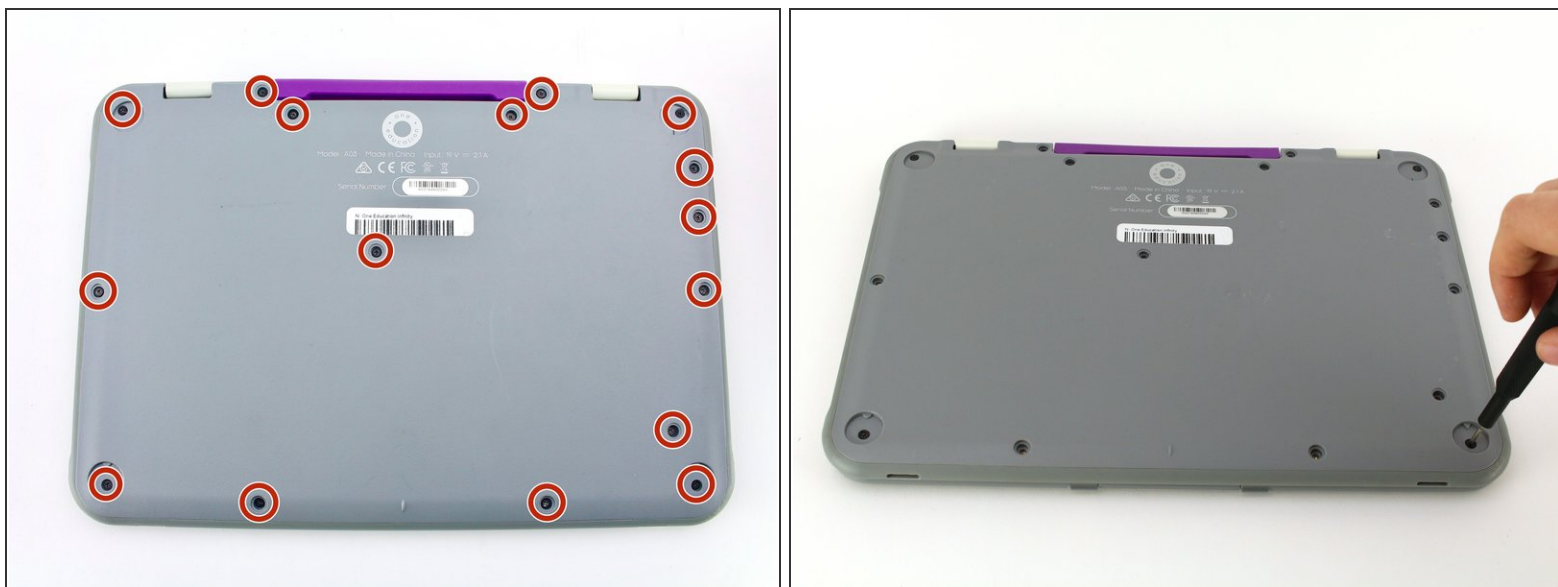
Step 1 — Back Case



 Always power off your device before beginning disassembly.

- Remove the screw covers and rubber feet from the bottom of the laptop with a metal spudger.

Step 2



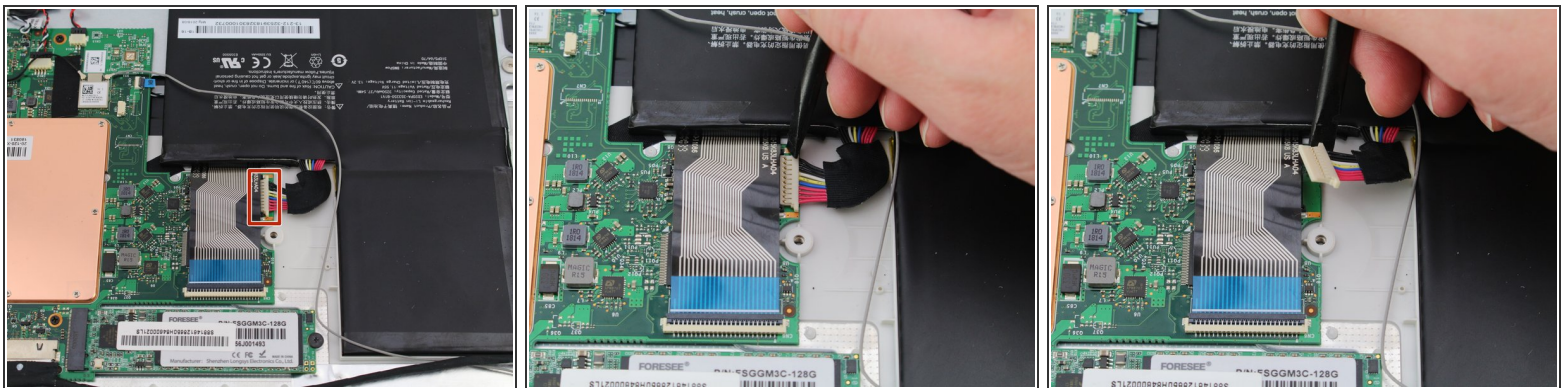
- Using a Phillips #00 screwdriver, remove the sixteen 5.0 mm black screws from the back panel.

Step 3



- Using the iFixit plastic opening tool or spudger, start near the white hinge of the device and lift along the outer edges of the device until all clips are released.
 - Lift the back case off of the device.
- i** Removing the back may create a loud snapping noise.

Step 4 — Battery



- i** There may be black tape inside your device covering components or holding down wires. This tape is unimportant for the function of the device, and can be removed.
- Carefully wiggle the battery cable to the right and out of the port with a plastic spudger.

Step 5



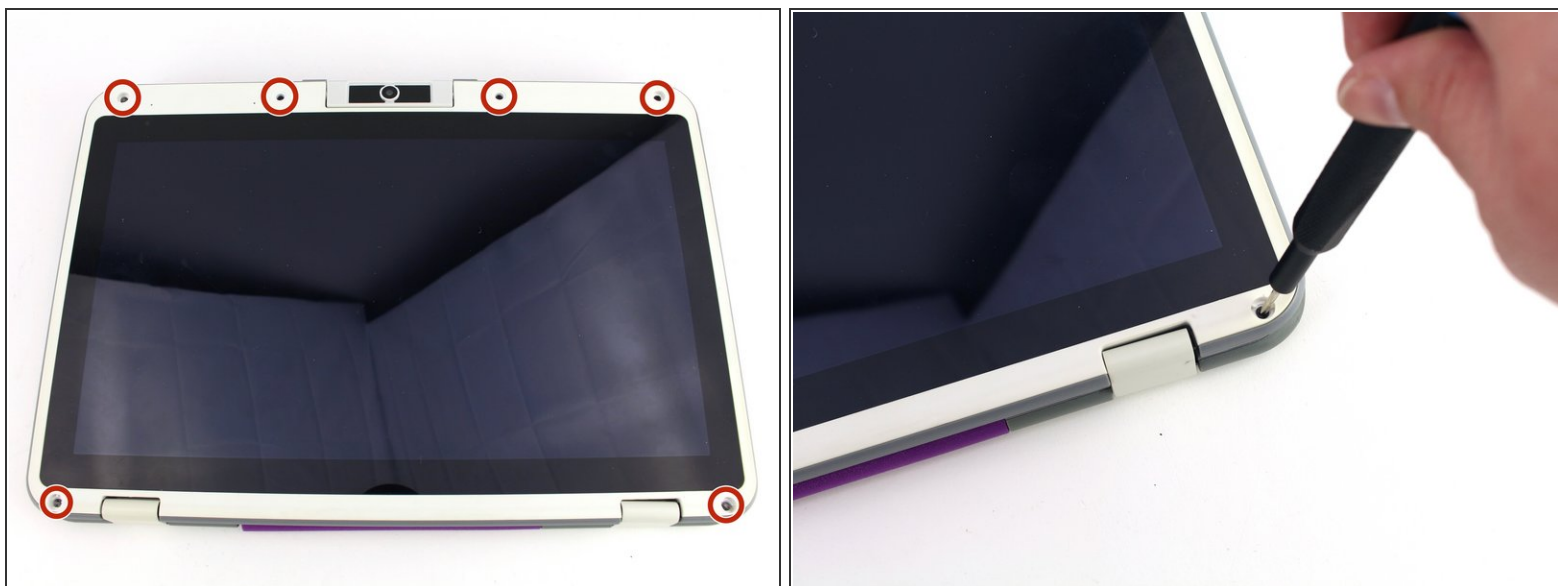
- Wedge a plastic spudger underneath the battery from the upper edge and slide it carefully along the length of the battery to separate it from the case.
- ⓘ There is a mild adhesive holding down the battery. Take care not to puncture or excessively bend the battery while freeing it from the adhesive.
- Lift the battery out from the internal case.

Step 6 — Upper Case



- Flip open the laptop so that the screen is exposed.
- ⓘ We found it convenient to flip the laptop into tablet mode for added support.
- Using a spudger, remove the six screw covers along the bezel of the screen.

Step 7



- Remove the six 2.8 mm Phillips #00 screws along the bezel.

Step 8



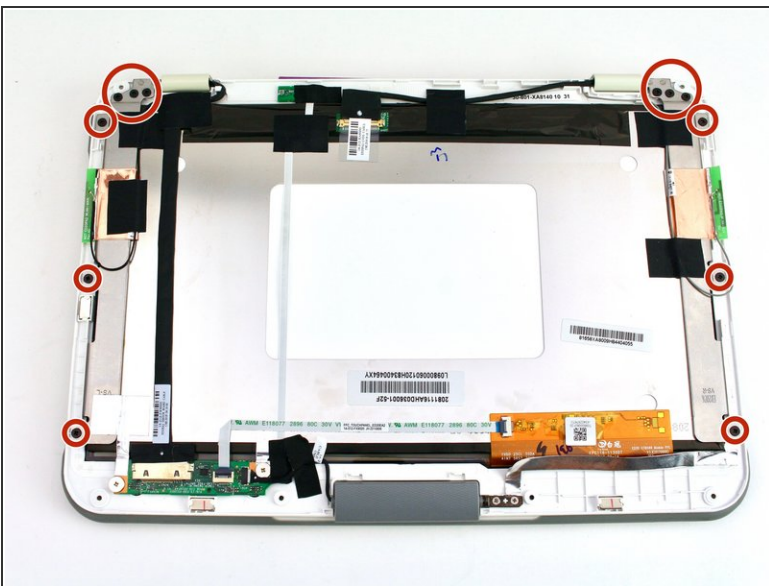
- Use the two tabs on the top edge of the screen to pry the case apart.
- Once the two top clips have been disengaged, start to work your way around the rest of the screen.

Step 9



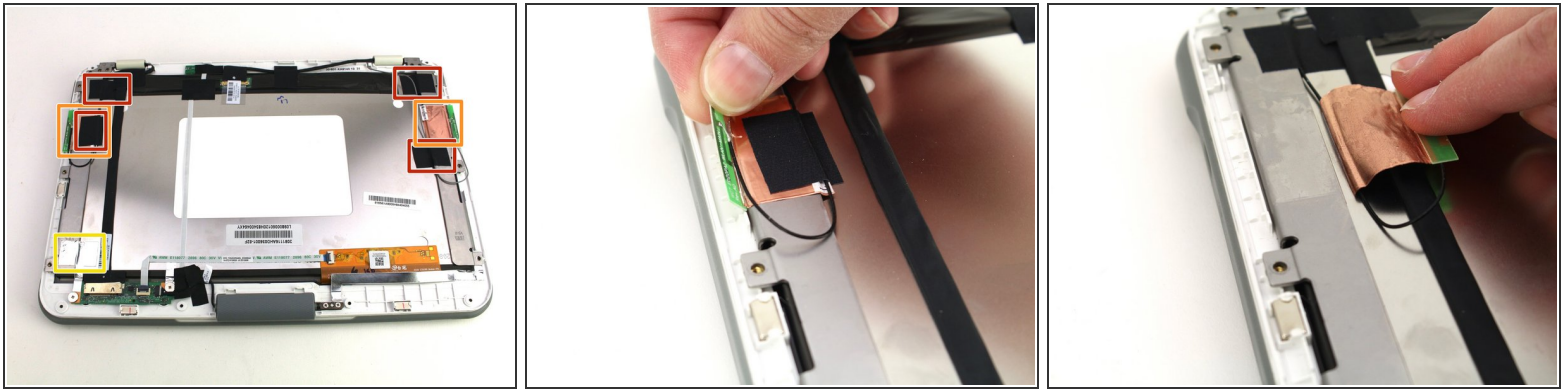
- Once all the clips have been popped off, remove the upper case from the back of the display assembly.
- ⓘ You may want to close the laptop while disconnecting the hinge-side edge, as it will give you extra clearance for the upper case.

Step 10 — Upper Hinge Assembly



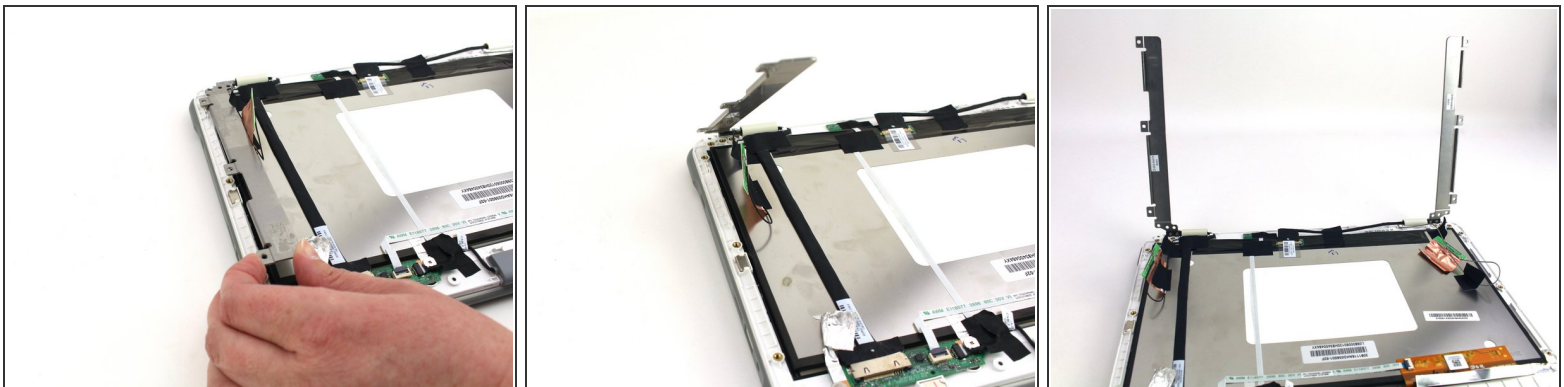
- Remove the twelve 3.8 mm Phillips #00 screws from the hinge brackets extending along the height of the display.

Step 11



- Peel back the four pieces of black tape.
- Peel back the antenna cable boards off of the display hinges.
- Peel off the silver tape from the display hinges.

Step 12



- Lift up both hinges, ensuring that they clear all tape and wires.

To reassemble your device, follow these instructions in reverse order.