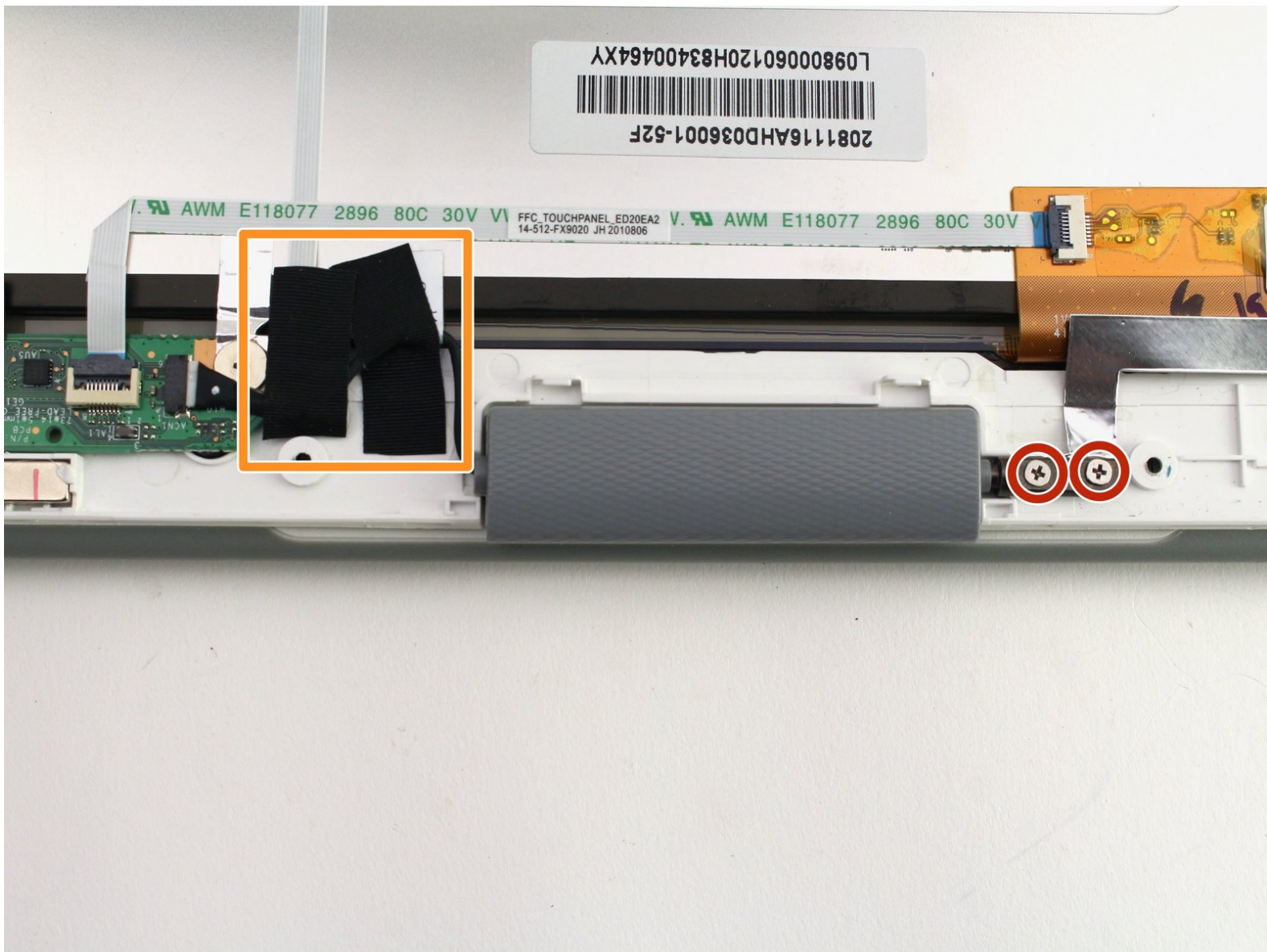




# One Education Infinity Webcam Replacement

This guide will show you how to access and replace a broken webcam on your One Education Infinity.

Written By: Austin Blakely



## INTRODUCTION

This guide details the process of removing and replacing a malfunctioning webcam in the One Education Infinity.

The webcam of the One Education Infinity is the sole photo-capturer of the device, and is mounted on a swivel, which allows it to function both as a front facing camera in laptop mode as well as a back facing camera in tablet mode (although it does sit at a slight angle to account for the bottom case).

If the webcam is malfunctioning, it should be fairly obvious. Simply open any app that utilizes the camera and check that the picture shows up clearly. If the camera lens has been cleaned and any software issues ruled out, then the issue is with the physical camera component, and it should be replaced.

Additionally, note that this guide has the user remove the battery prior to disassembling the upper case to prevent any electrical damage while disconnecting the display cables. However, the same effect can be achieved by simply disconnecting the battery cable, so the battery removal in step 5 can be skipped to save a bit of time and effort.




### TOOLS:

- [Metal Spudger](#) (1)
  - [iFixit Opening Tools](#) (1)
  - [Phillips #00 Screwdriver](#) (1)
  - [Spudger](#) (1)
-

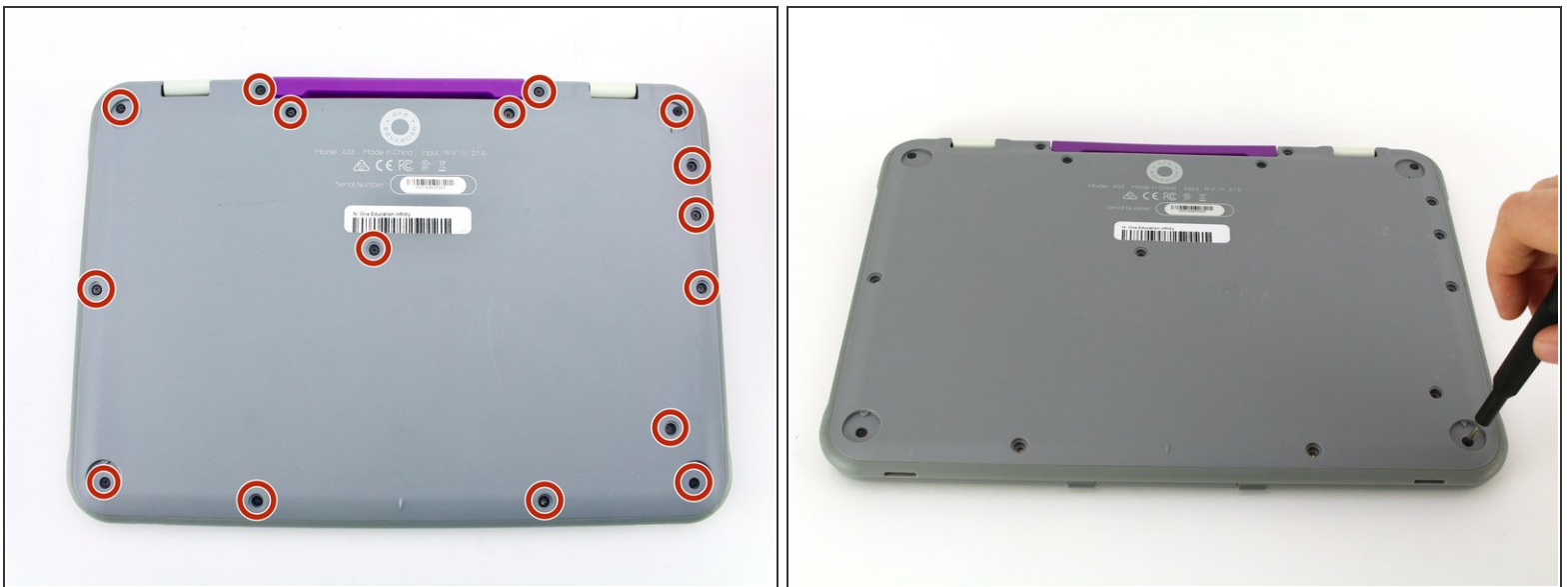
## Step 1 — Back Case



 Always power off your device before beginning disassembly.

- Remove the screw covers and rubber feet from the bottom of the laptop with a metal spudger.

## Step 2



- Using a Phillips #00 screwdriver, remove the sixteen 5.0 mm black screws from the back panel.



## Step 3



- Using the iFixit plastic opening tool or spudger, start near the white hinge of the device and lift along the outer edges of the device until all clips are released.
  - Lift the back case off of the device.
- i** Removing the back may create a loud snapping noise.

## Step 4 — Battery



- i** There may be black tape inside your device covering components or holding down wires. This tape is unimportant for the function of the device, and can be removed.
- Carefully wiggle the battery cable to the right and out of the port with a plastic spudger.

## Step 5



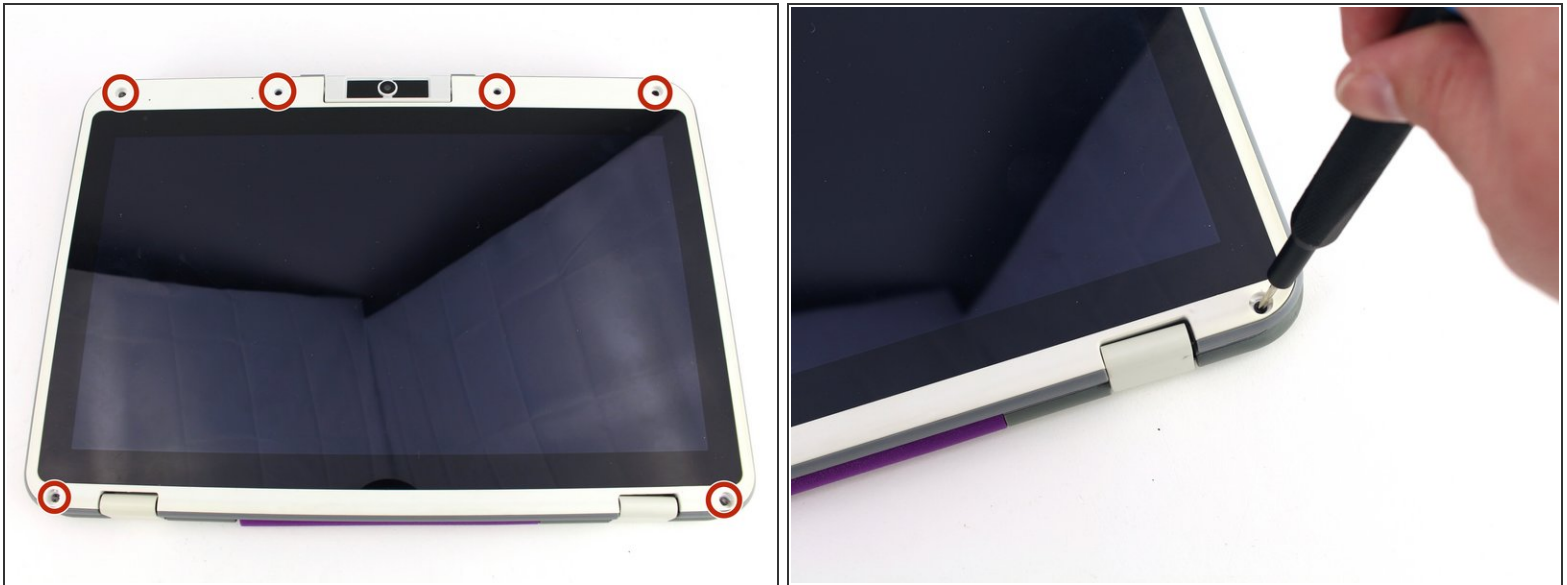
- Wedge a plastic spudger underneath the battery from the upper edge and slide it carefully along the length of the battery to separate it from the case.
- ⓘ There is a mild adhesive holding down the battery. Take care not to puncture or excessively bend the battery while freeing it from the adhesive.
- Lift the battery out from the internal case.

## Step 6 — Upper Case



- Flip open the laptop so that the screen is exposed.
- ⓘ We found it convenient to flip the laptop into tablet mode for added support.
- Using a spudger, remove the six screw covers along the bezel of the screen.

## Step 7



- Remove the six 2.8 mm Phillips #00 screws along the bezel.

## Step 8



- Use the two tabs on the top edge of the screen to pry the case apart.
- Once the two top clips have been disengaged, start to work your way around the rest of the screen.

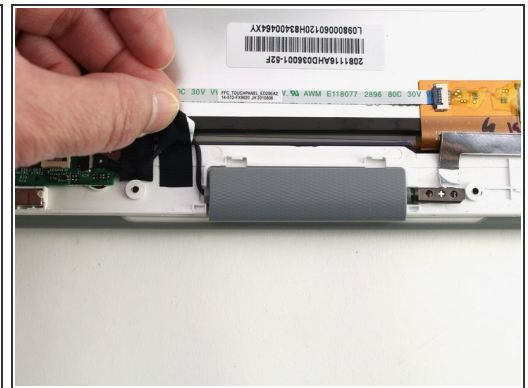
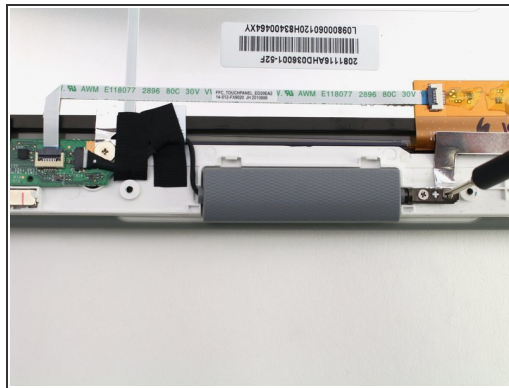
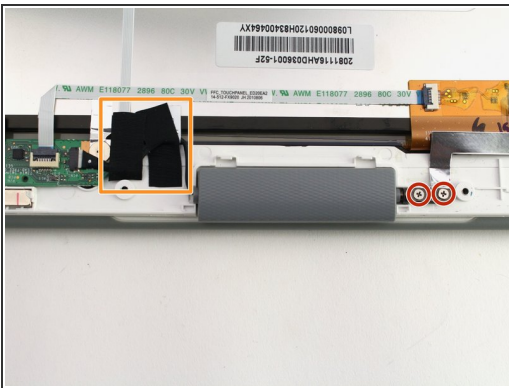


## Step 9



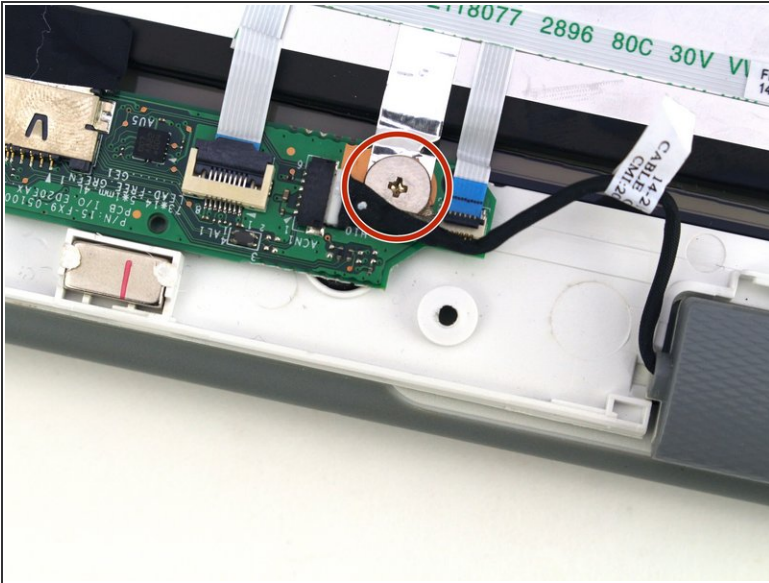
- Once all the clips have been popped off, remove the upper case from the back of the display assembly.
- ⓘ You may want to close the laptop while disconnecting the hinge-side edge, as it will give you extra clearance for the upper case.

## Step 10 — Webcam



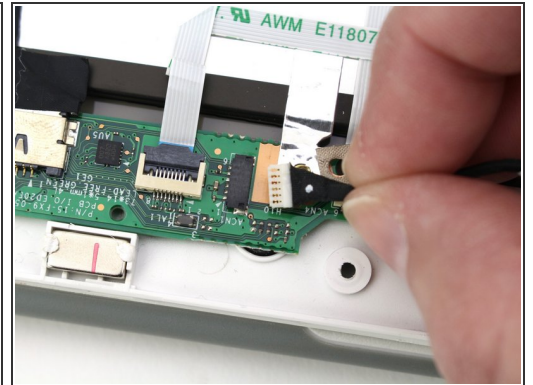
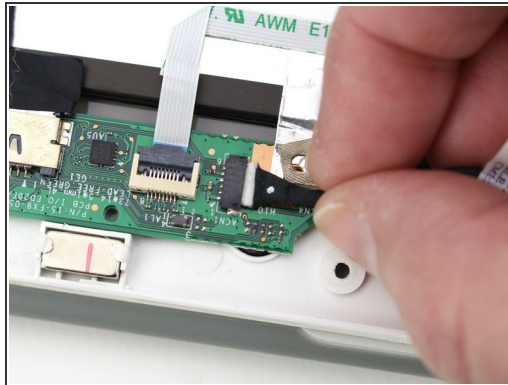
- Remove the two 3.3 mm Phillips #00 screws holding down the webcam mount.
- Peel off the two pieces of tape holding down the webcam wire just to the left of the webcam.

## Step 11



- Remove the silver 2.7 mm screw from the circuit board beside the webcam with a Phillips #00 screwdriver.

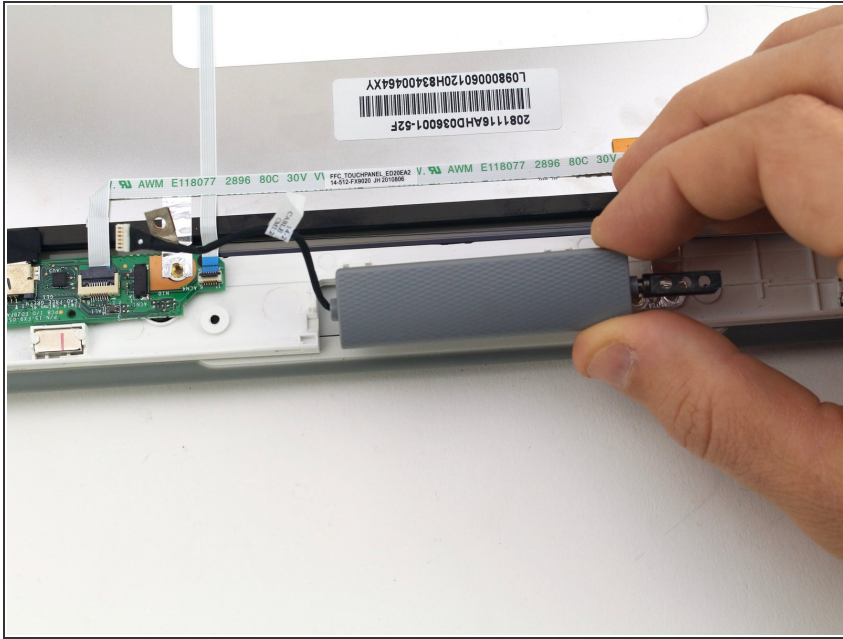
## Step 12



- Unplug the webcam cable from the circuit board by pulling it horizontally from its connector.



## Step 13



- Lift the webcam up from the upper case assembly to remove.

To reassemble your device, follow these instructions in reverse order.