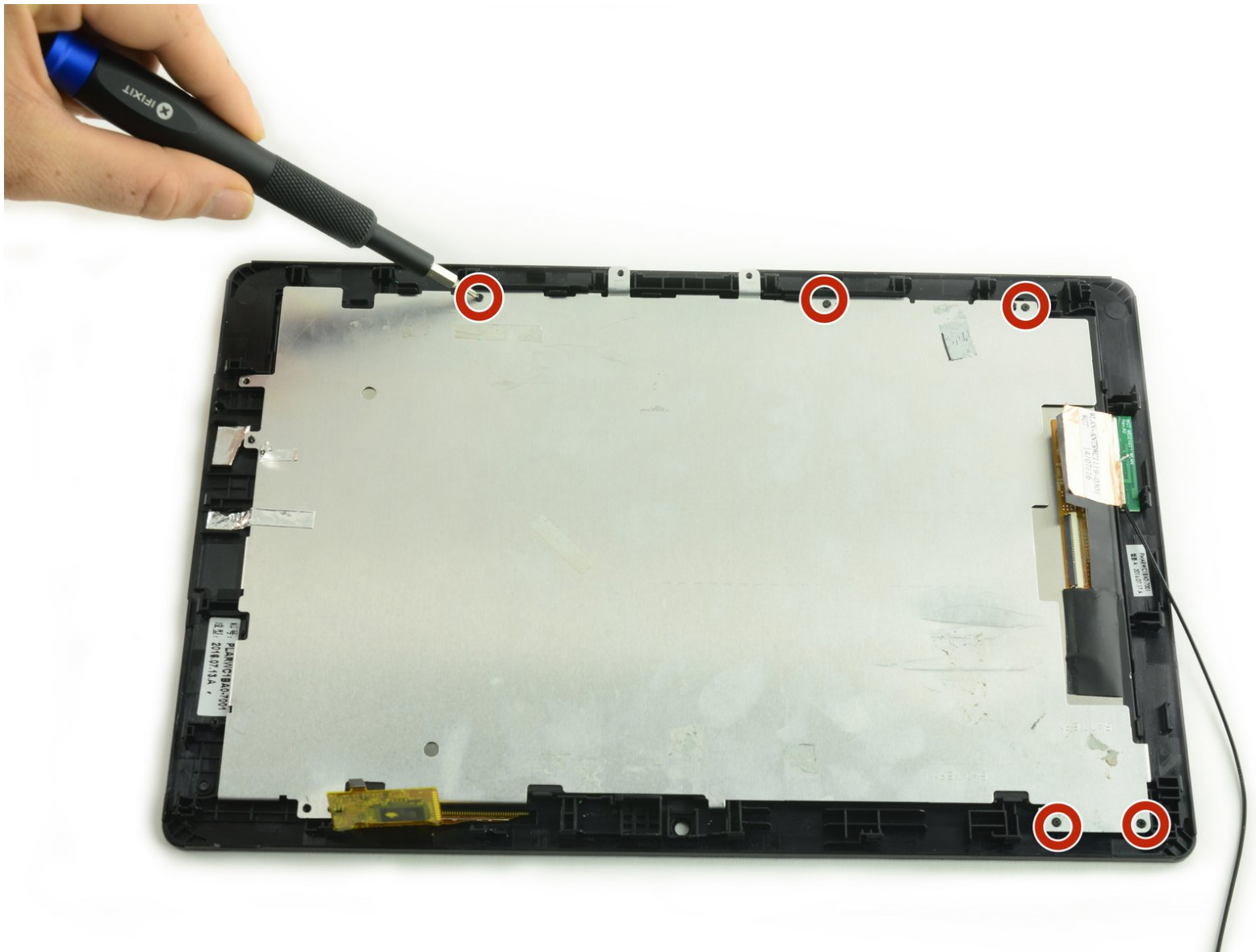




One Education Infinity:One Display Assembly Replacement

This guide will demonstrate how to remove the display assembly in your One Education Infinity:One laptop.

Written By: Taylor Bratsch



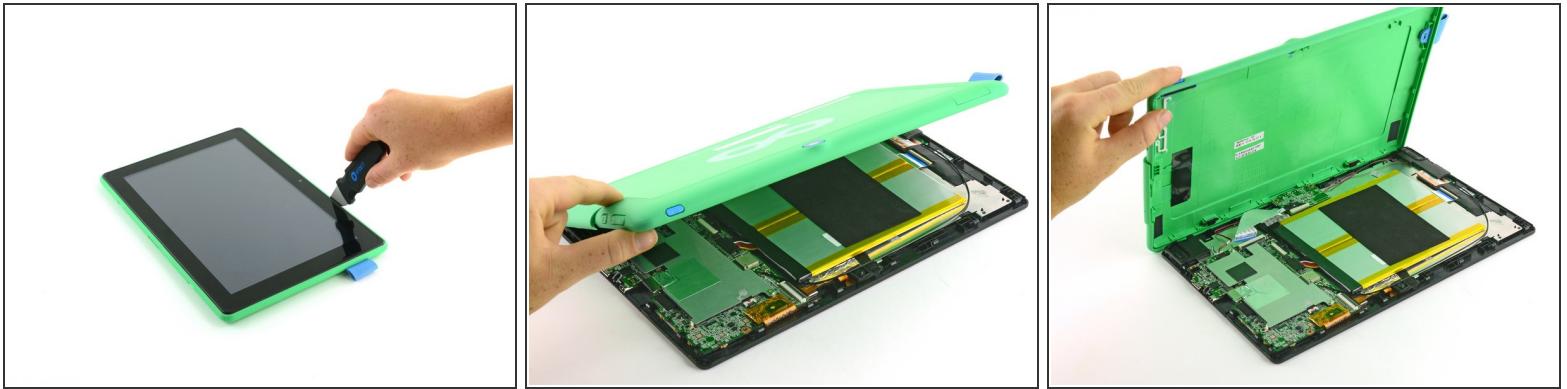
INTRODUCTION

This guide will detail how to replace the display assembly in the One Education Infinity:One laptop. After completion of this guide, the digitizer and screen will be separated to allow for replacement of either component.

TOOLS:

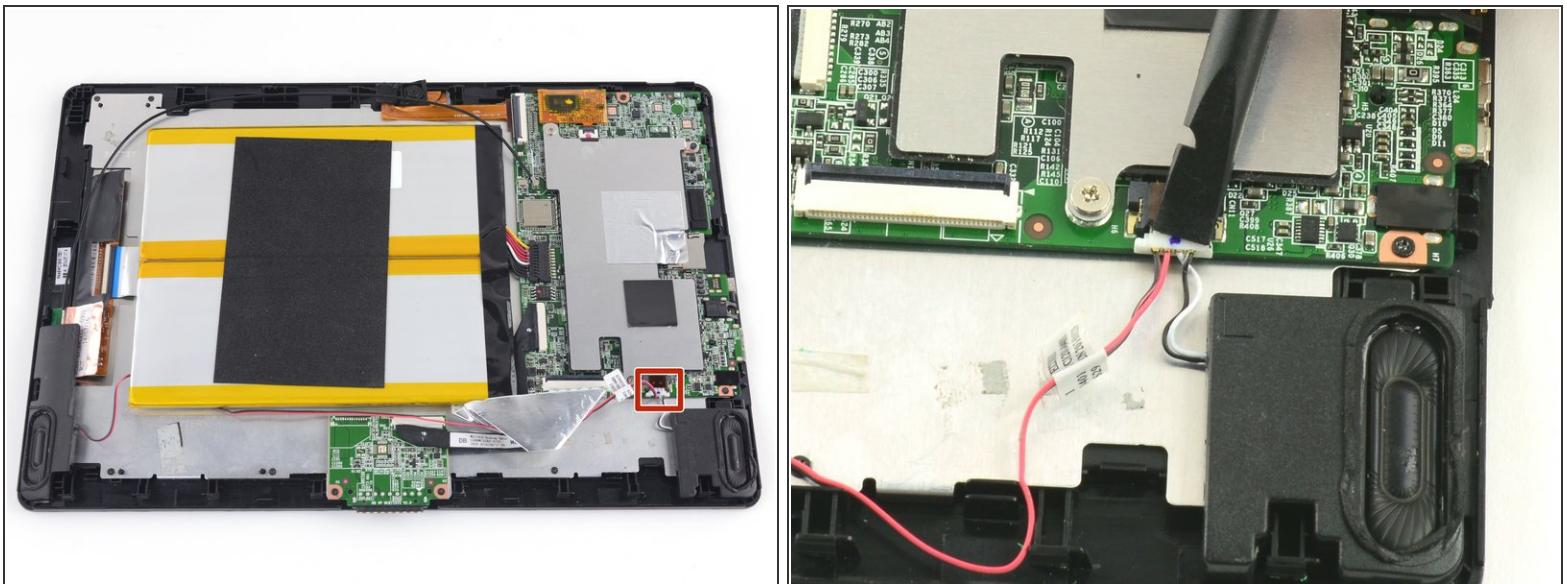
- [Phillips #00 Screwdriver](#) (1)
 - [Phillips #000 Screwdriver](#) (1)
 - [Jimmy](#) (1)
 - [Heavy-Duty Spudger](#) (1)
 - [Tweezers](#) (1)
-

Step 1 — Top Case



- Insert a Jimmy or other prying tool into the seam between the screen and back case.
- Trace around the edges until all clips are released.
- Lift the back case away from the tablet.

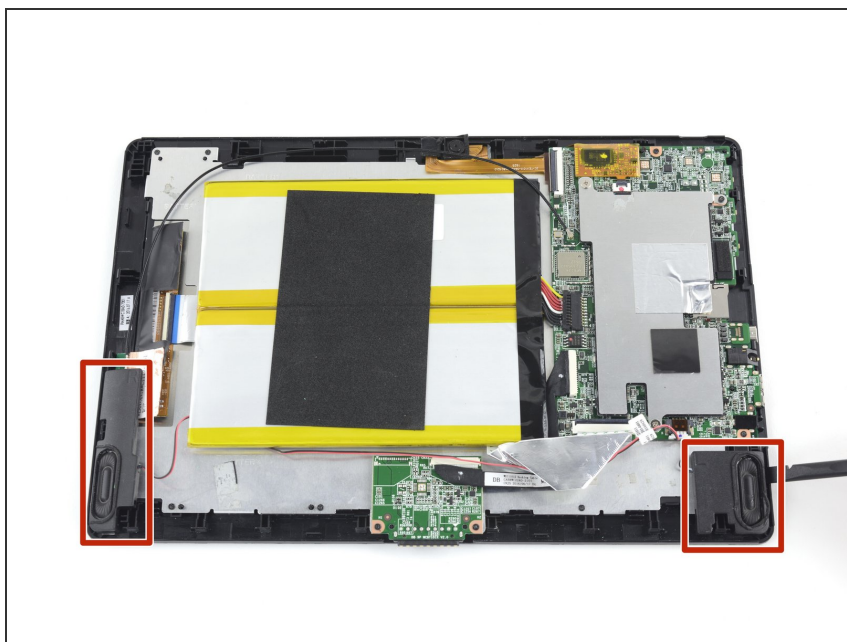
Step 2 — Speaker



- Use a spudger to release the speaker wires by pushing the bundled cabled connector away from the motherboard.

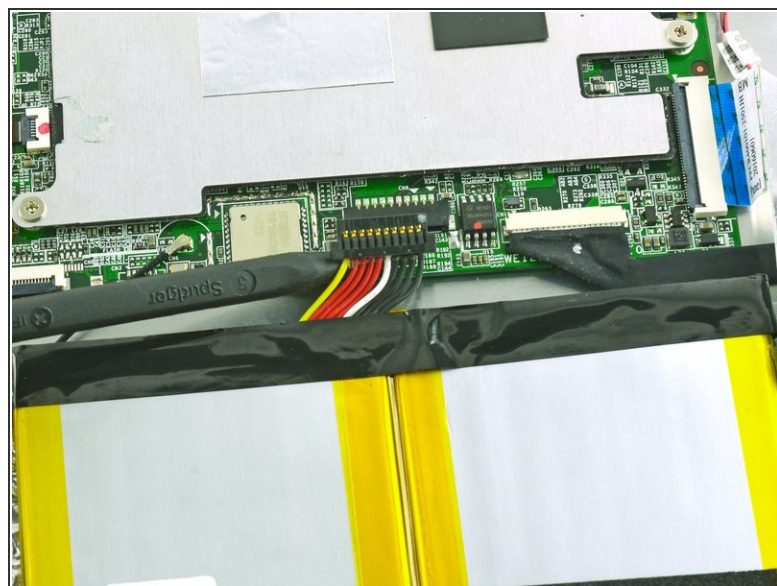
⚠ Be sure to pull out the white connector instead of the individual wires to avoid damage to the device.

Step 3



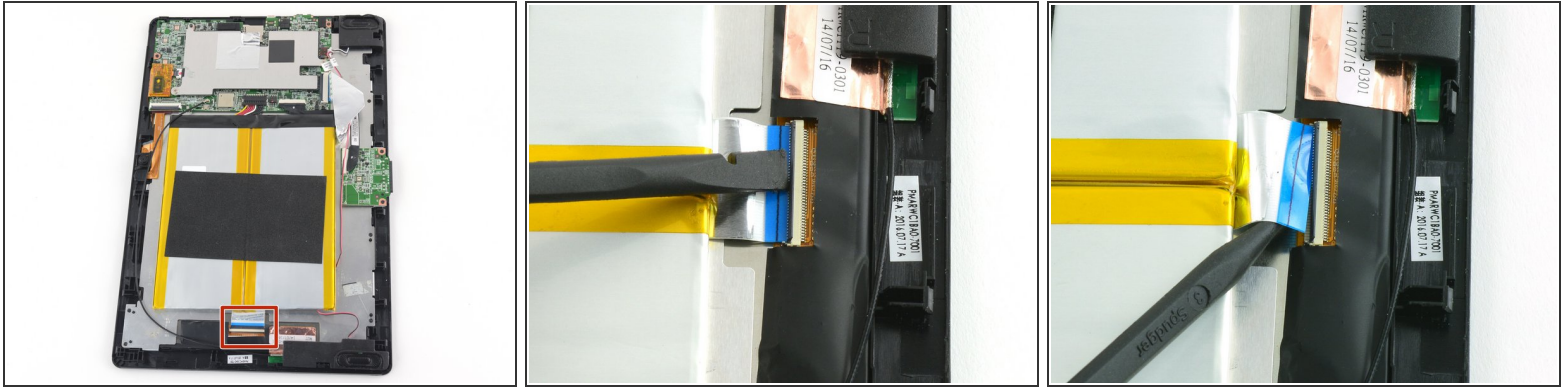
- Use a spudger to lift the speakers out of the device.

Step 4 — Battery



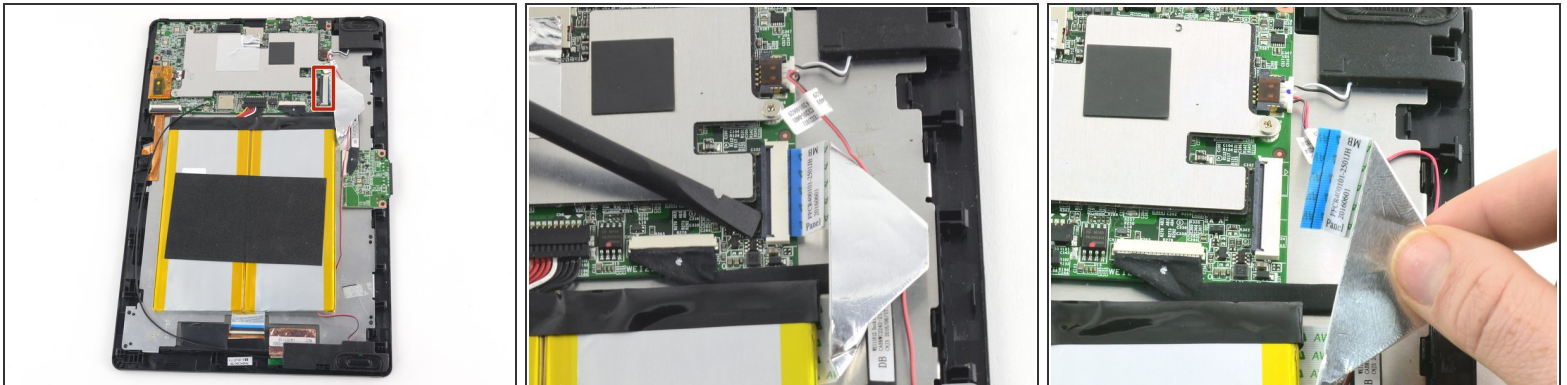
- Use a spudger to disconnect the black bundled cable connector from the motherboard.

Step 5



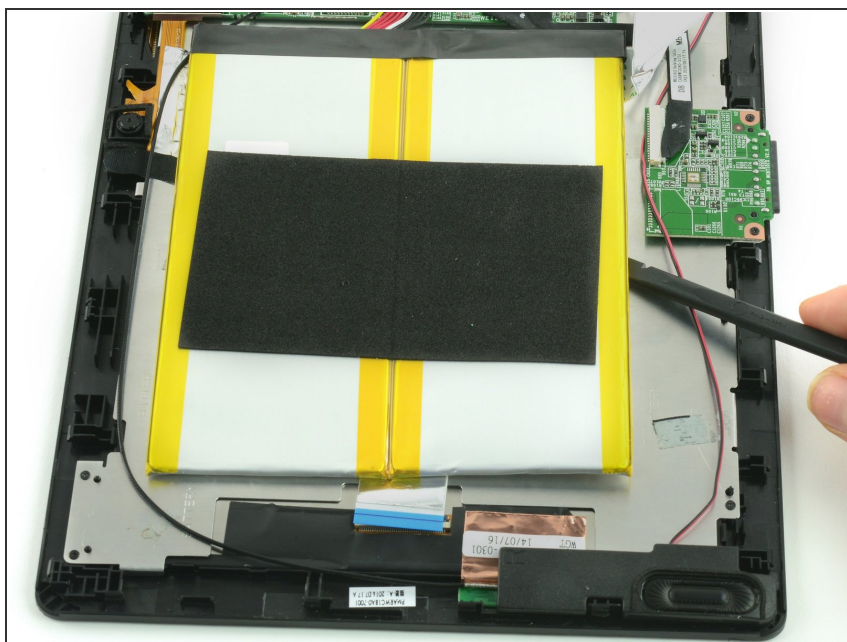
- Use a spudger to lift the black tab on top of the ZIF connector.
- Slide the ribbon cable out of the connector.

Step 6



- Use a spudger to flip up the black retaining flap on the ZIF connector.
- Pull the folded ribbon cable straight out of the connector.
- ⓘ This ribbon cable must be disconnected before removing the battery because it is attached to the battery with adhesive.

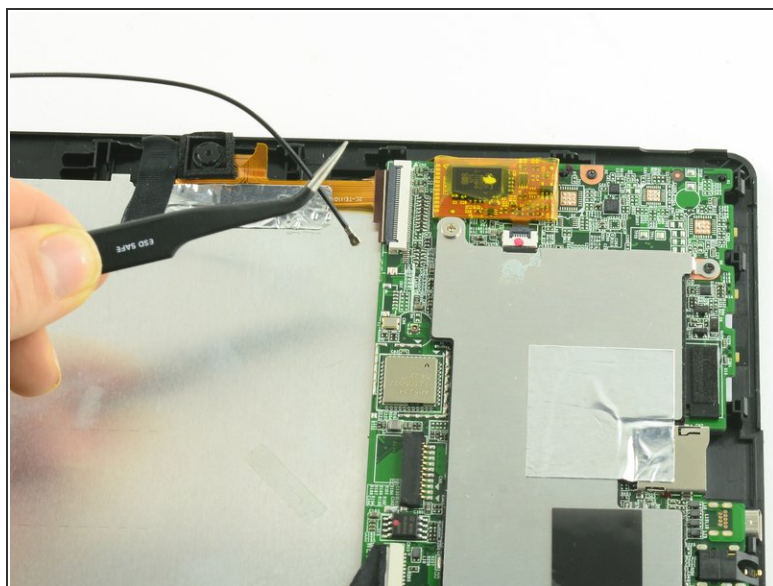
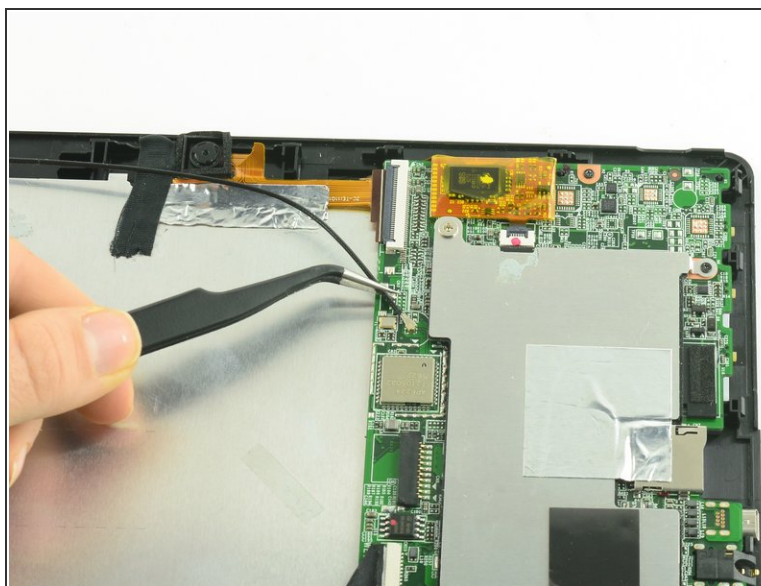
Step 7



- Use a spudger to pry the battery away from the device.

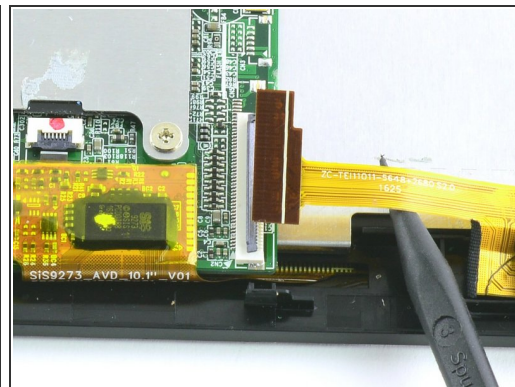
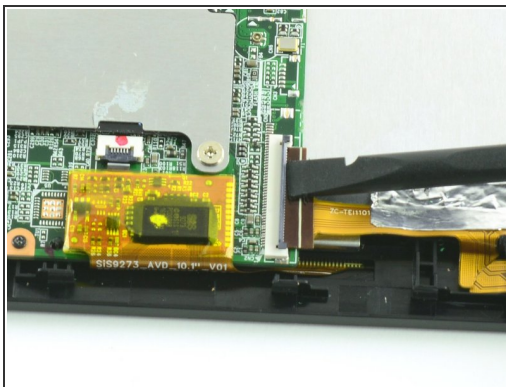
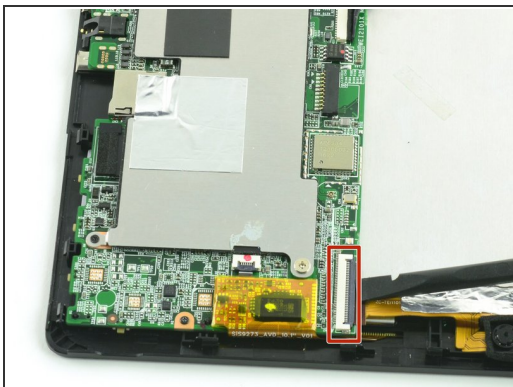
⚠ Always use ESD safe tools when working with delicate electrical components.

Step 8 — Antenna



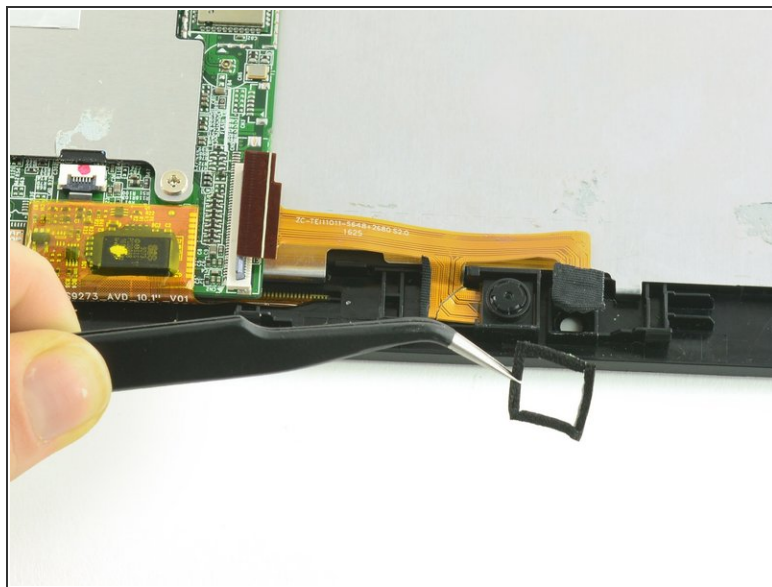
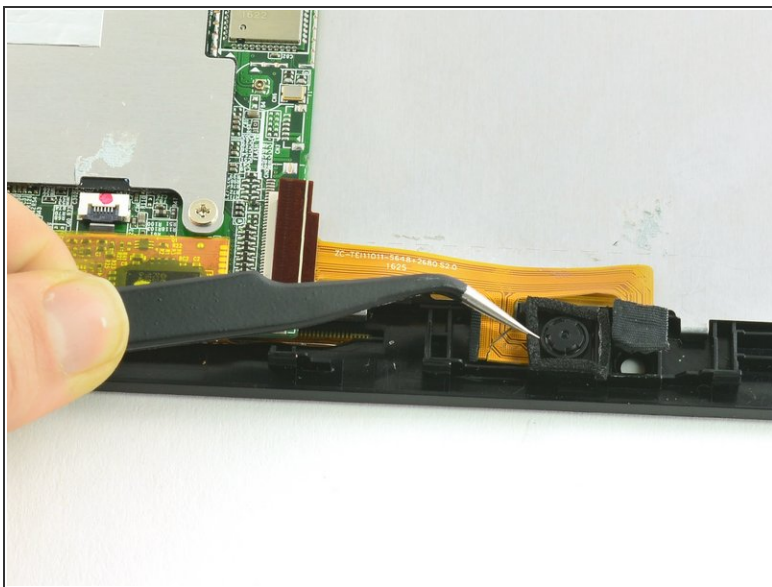
- Use ESD safe tweezers to disconnect the antenna from the motherboard.

Step 9 — Camera Assembly



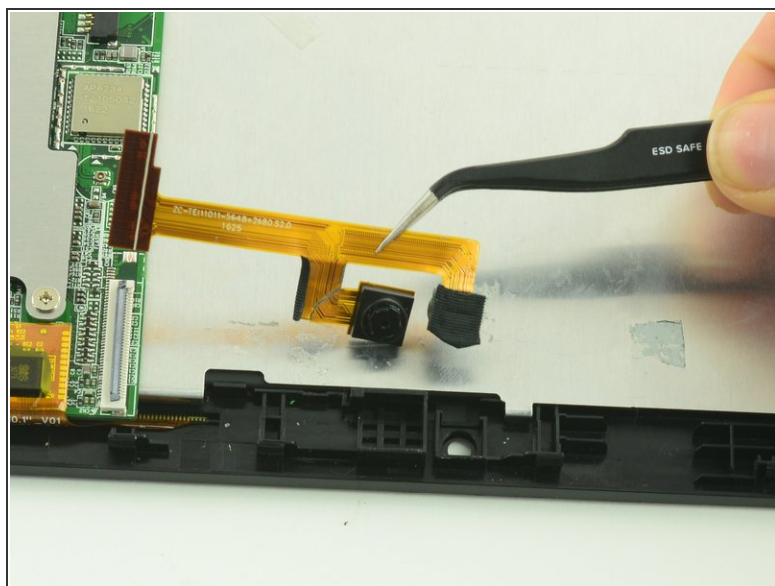
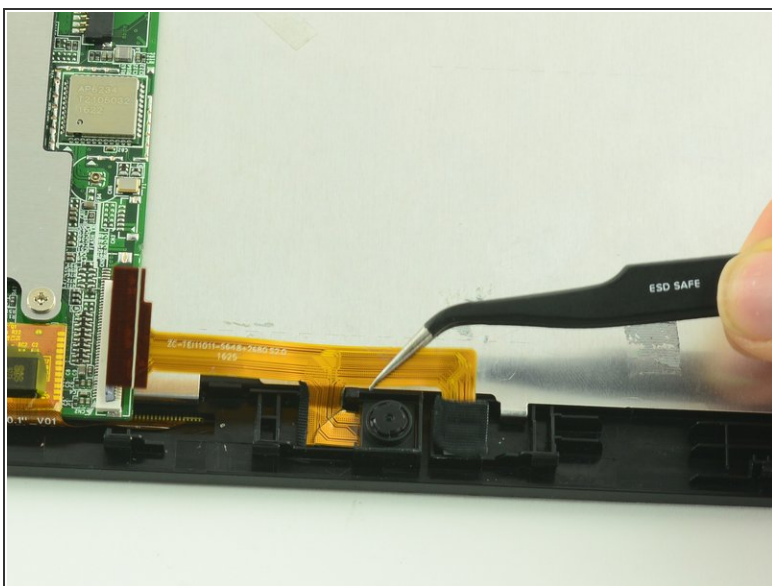
- Use a spudger to flip up the black flap on the camera's ZIF connector.
- Pull the ribbon cable straight out of the connector.

Step 10



- Use tweezers to remove the black cushion surrounding the camera lens.

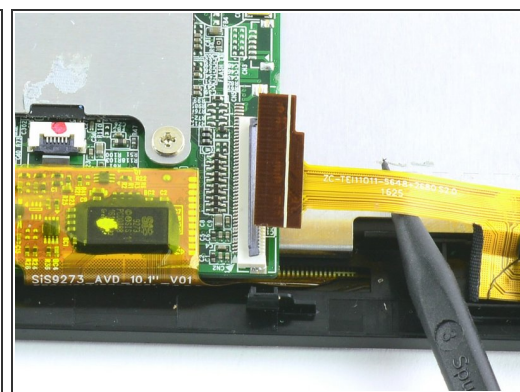
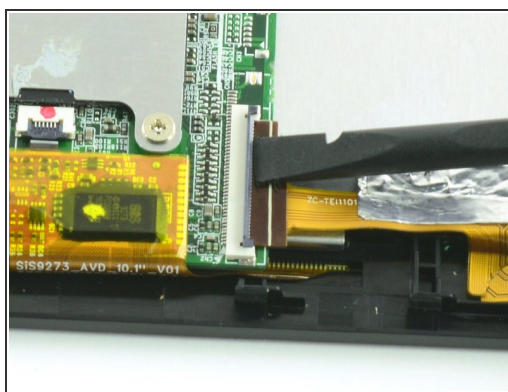
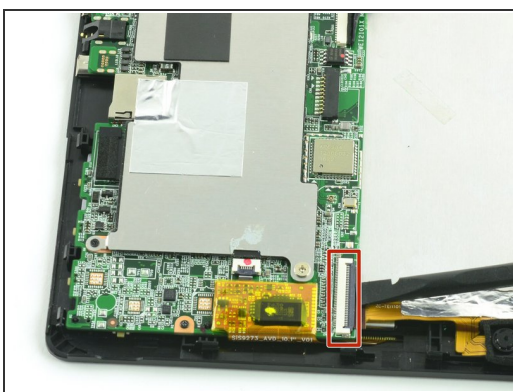
Step 11



- Use tweezers to lift the camera assembly away from the device.

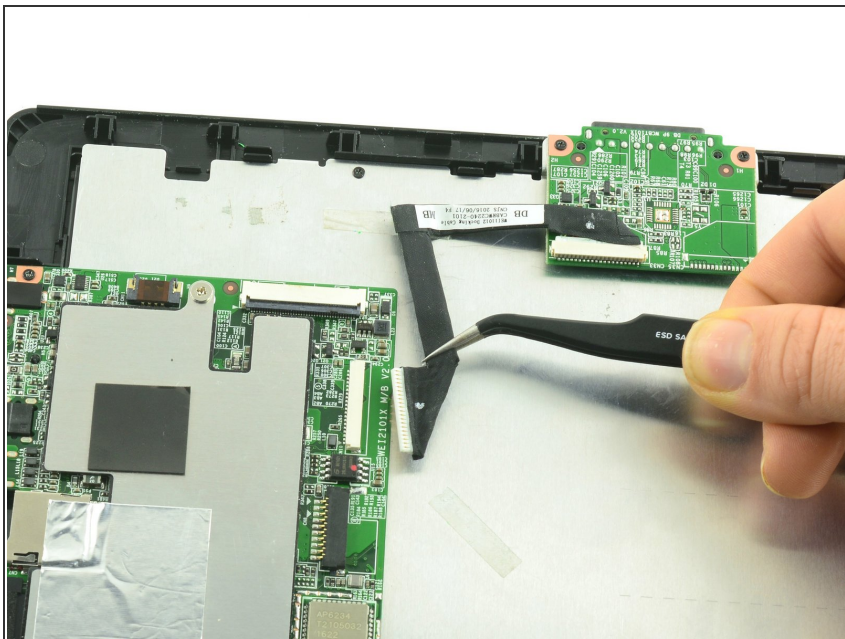
⚠ Lift straight up to avoid tearing the delicate ribbon cable on the retaining wall.

Step 12 — Motherboard



- Use a spudger to flip up the black flap on the camera's ZIF connector.
- Pull the ribbon cable straight out of the connector.

Step 13



- Use tweezers to pull the dock connection cable away from the motherboard.

Step 14



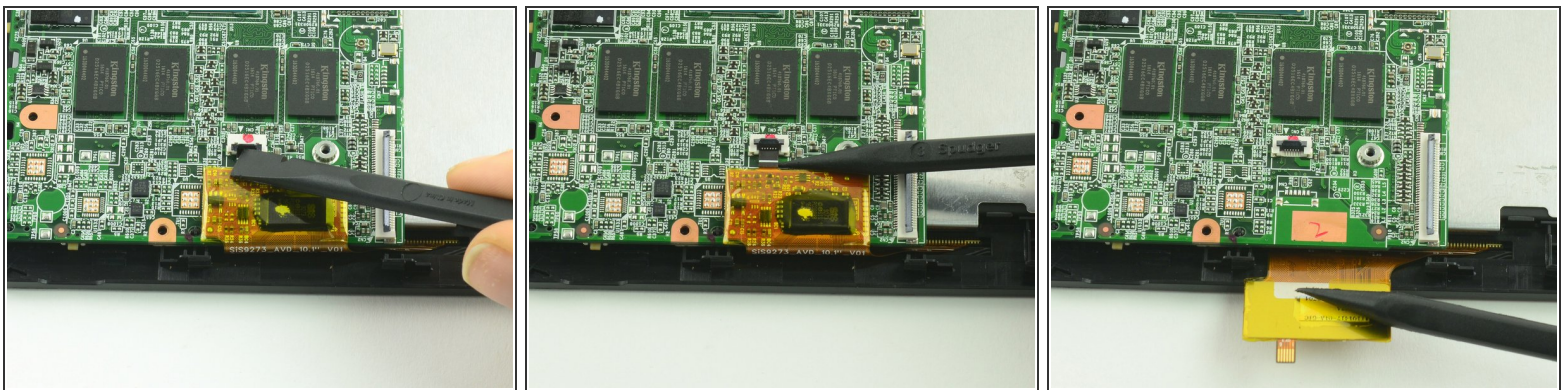
- Use a Phillips #00 screwdriver to unscrew the two 3.4 mm screws.
- Use a Phillips #000 screwdriver to unscrew the one 4.2mm screw.

Step 15



- Lift the protective shield away from the motherboard.

Step 16



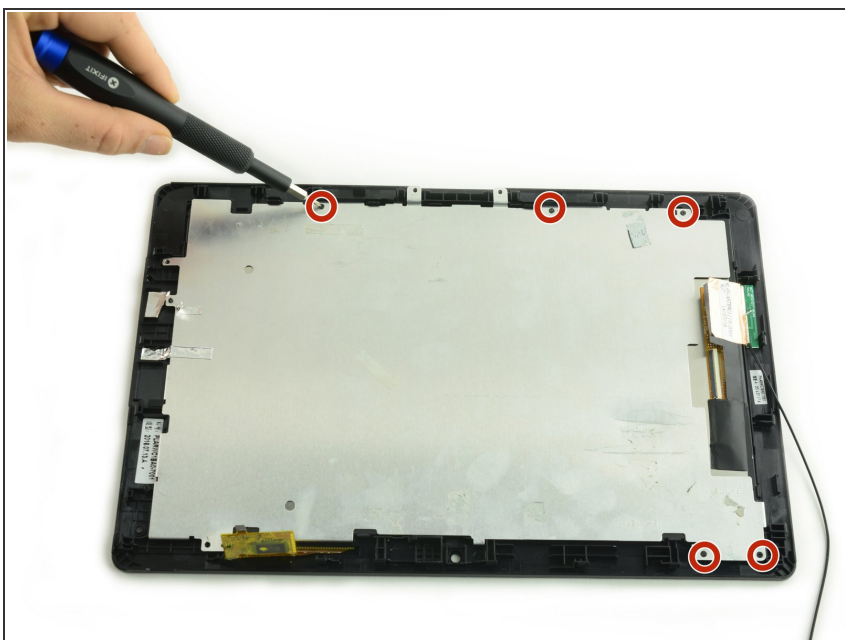
- With the flat end of a spudger, flip up the black flap on the display's ZIF connector.
 - Insert the pointed end of the spudger between the cable and the motherboard and gently pull the cable straight out of the connector.
- ✦ During reassembly, be sure to insert the cable into the connector up to the white line on the cable and then close the retaining flap.

Step 17



- Gently lift the motherboard away from the display assembly.

Step 18 — Display Assembly



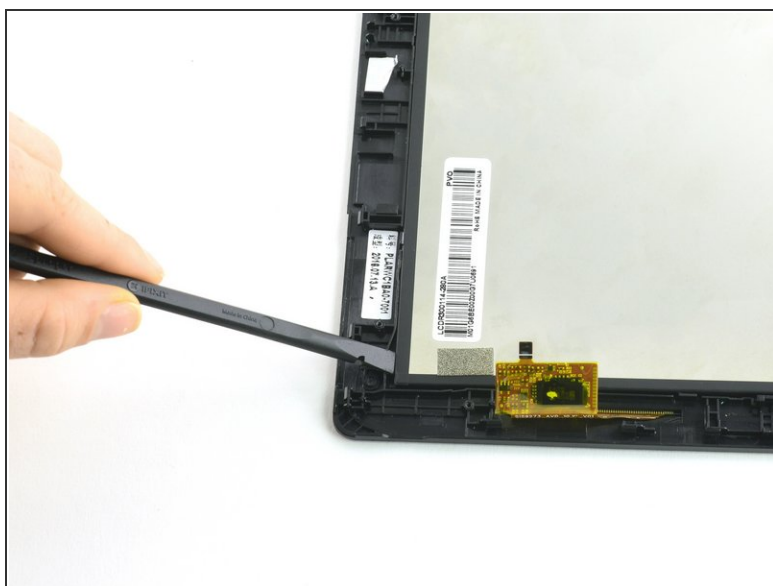
- Unscrew the five 4.2mm screws with a Phillips #000 screwdriver.

Step 19



- Peel the protective flap away from the display.

Step 20



- Use a spudger to lift the digitizer away from the screen.
- Grasp the edge of the digitizer and lift straight up to remove.

To reassemble your device, follow these instructions in reverse order.