



One Education Infinity:One Hinge Contact Assembly Replacement

This guide will demonstrate how to remove the hinge and the contained circuit board in your One Education Infinity:One laptop.

Written By: Taylor Bratsch



INTRODUCTION

This guide can be used to remove the entire hinge or the hinge contact assembly. The hinge, along with its contact assembly, connects the keyboard base with the tablet. If the tablet fails to recognize the keyboard, replacing this contact assembly might solve the problem.



TOOLS:

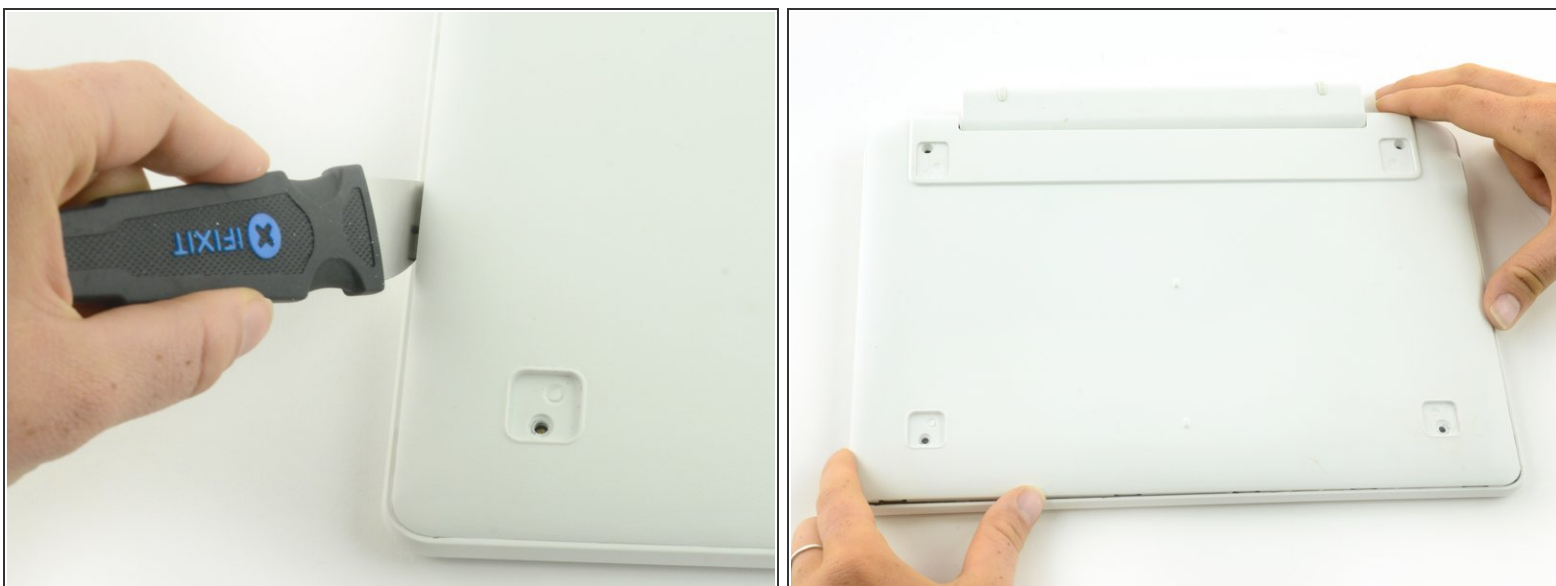
- [Heavy-Duty Spudger](#) (1)
 - [Tweezers](#) (1)
 - [Jimmy](#) (1)
 - [Phillips #00 Screwdriver](#) (1)
-

Step 1 — Back Case



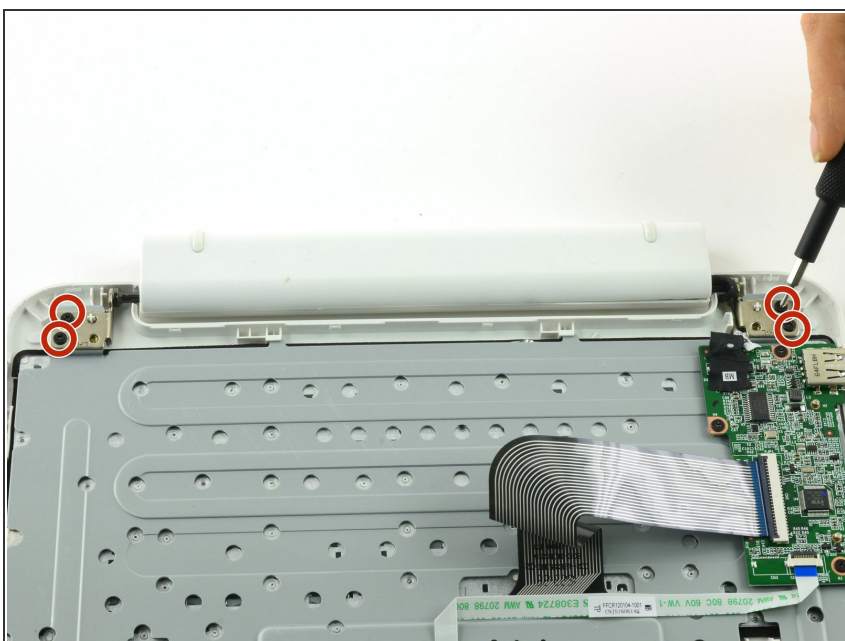
- Use a spudger to pry the four rubber pads away from the bottom of the case.
- Use a Phillips #00 screwdriver to unscrew the four 6.4 mm screws.

Step 2



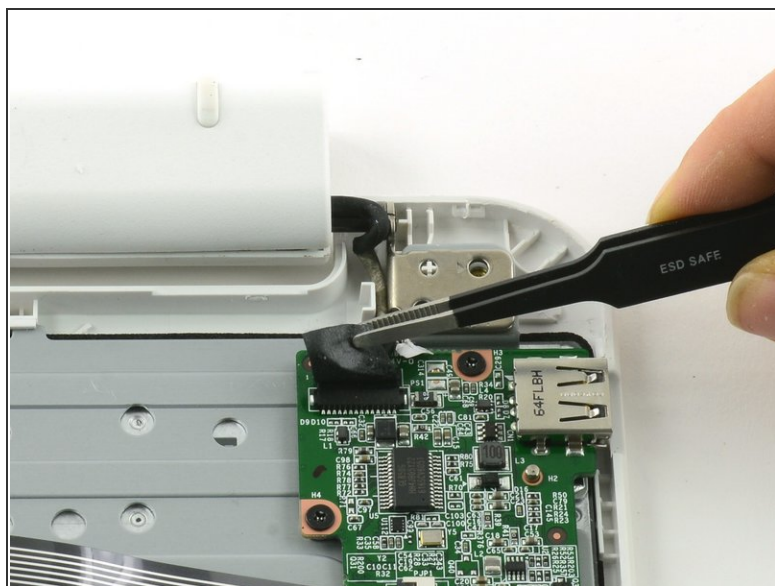
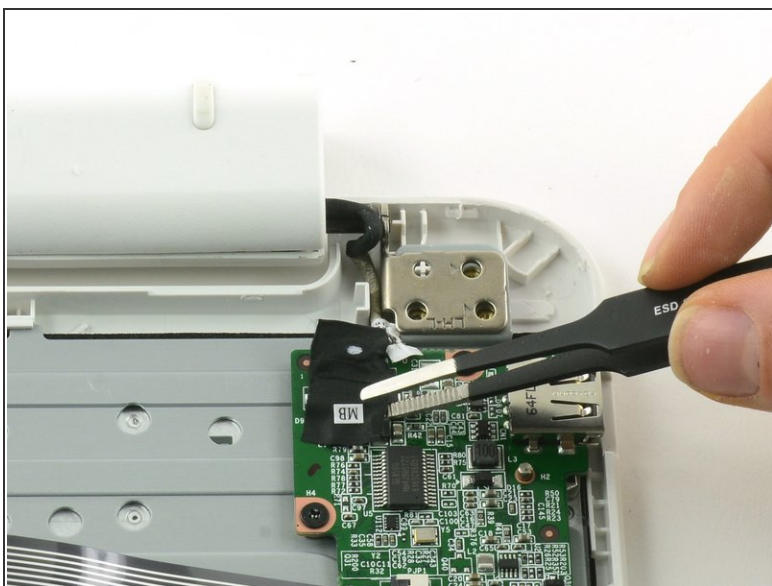
- Insert a Jimmy or other prying tool into the seam on the edge of the casing.
- Trace along the edges of the device until all clips are released.
- Lift the back case away from the device.

Step 3



- Use a Phillips #00 screwdriver to unscrew the four 6.4mm screws on the hinge mounts.

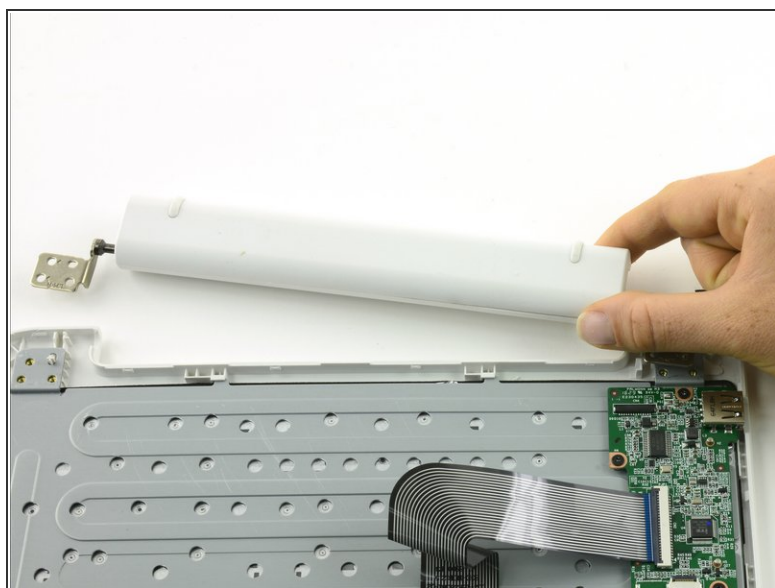
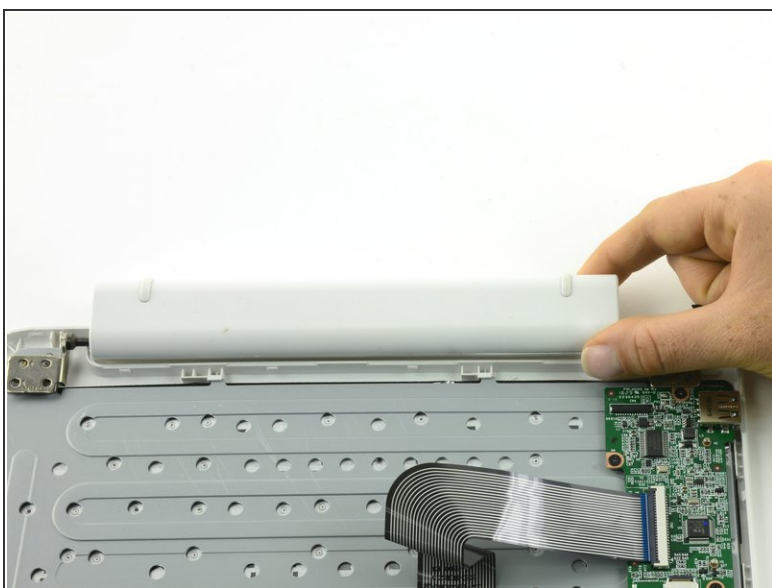
Step 4



- Use tweezers to lift the fabric cover and hinge connector away from the daughterboard.

⚠ Always use ESD safe tools when working with delicate electrical components.

Step 5 — Hinge Contact Assembly



- Lift the hinge away from the device.

Step 6



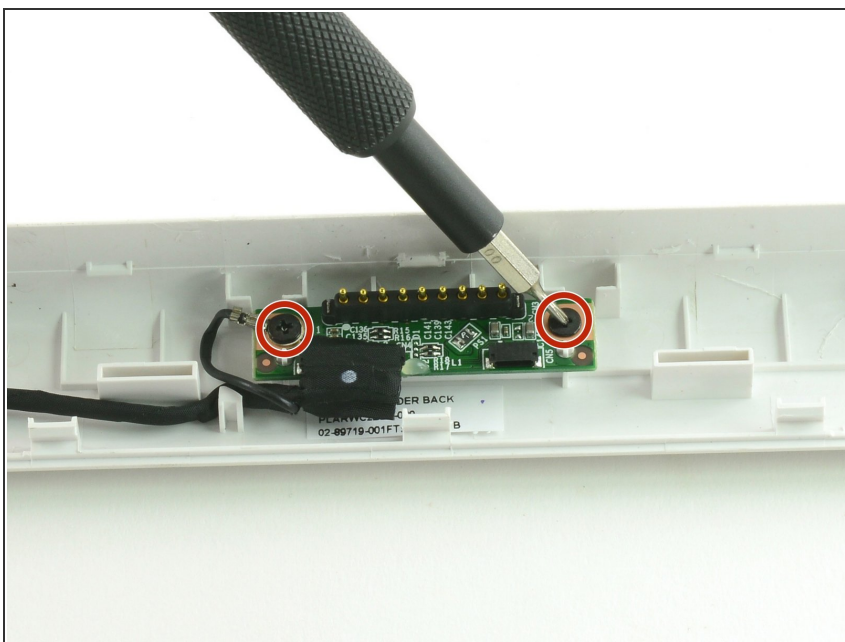
- Use a Phillips #00 screwdriver to unscrew the two 6.5mm screws.

Step 7



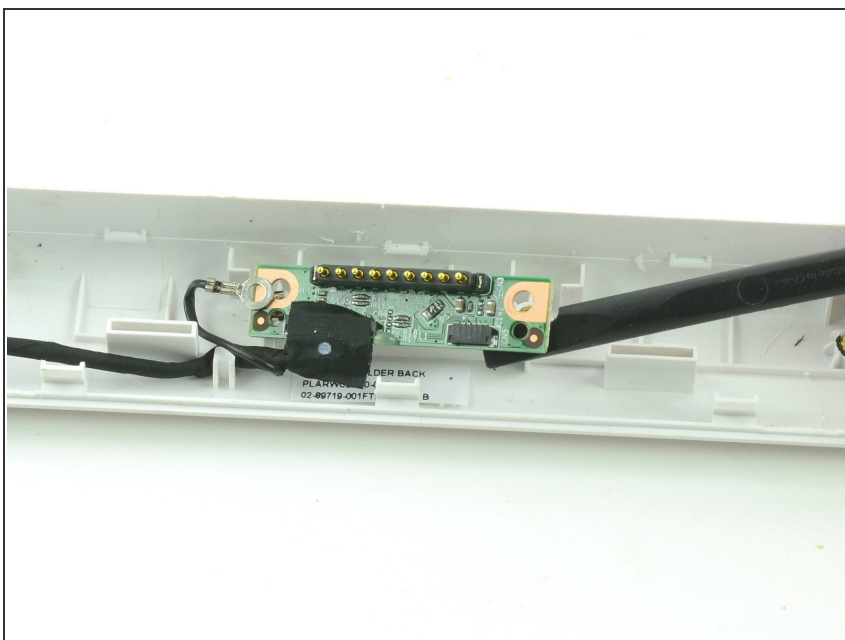
- Slide a Jimmy or other prying tool along the seam of the hinge to pry the casing apart.

Step 8



- Use a Phillips #00 screwdriver to remove the two 4.3mm screws holding the circuit board in place.

Step 9



- Use a spudger to pry the circuit board away from the casing.
- ⚠ Always use ESD safe tools when removing delicate components.

To reassemble your device, follow these instructions in reverse order.