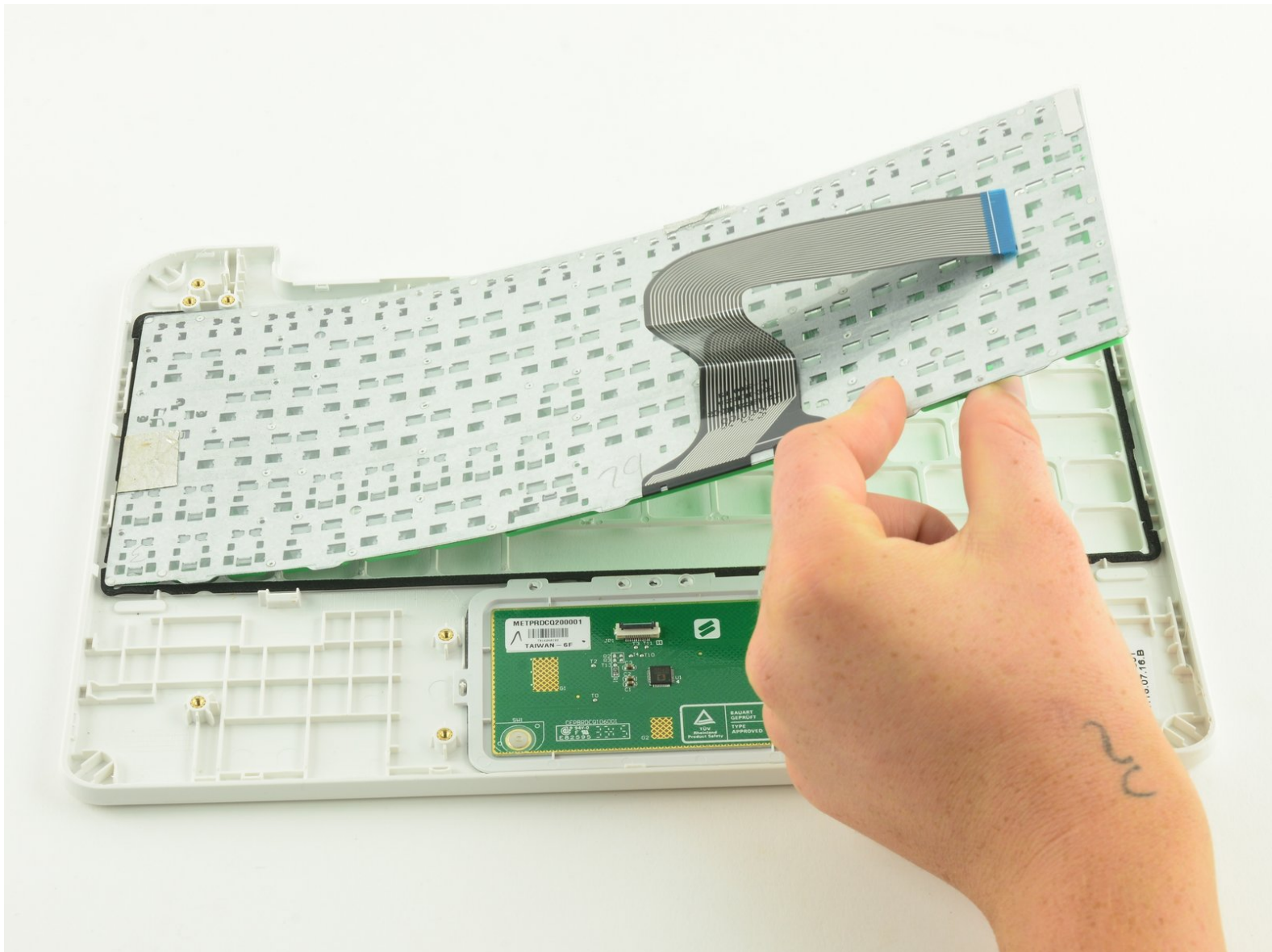




One Education Infinity:One Keyboard Replacement

This guide will demonstrate how to remove the keyboard in your One Education Infinity:One laptop.

Written By: Taylor Bratsch



INTRODUCTION

This guide will detail how to replace the keyboard in the One Education Infinity:One laptop.

TOOLS:

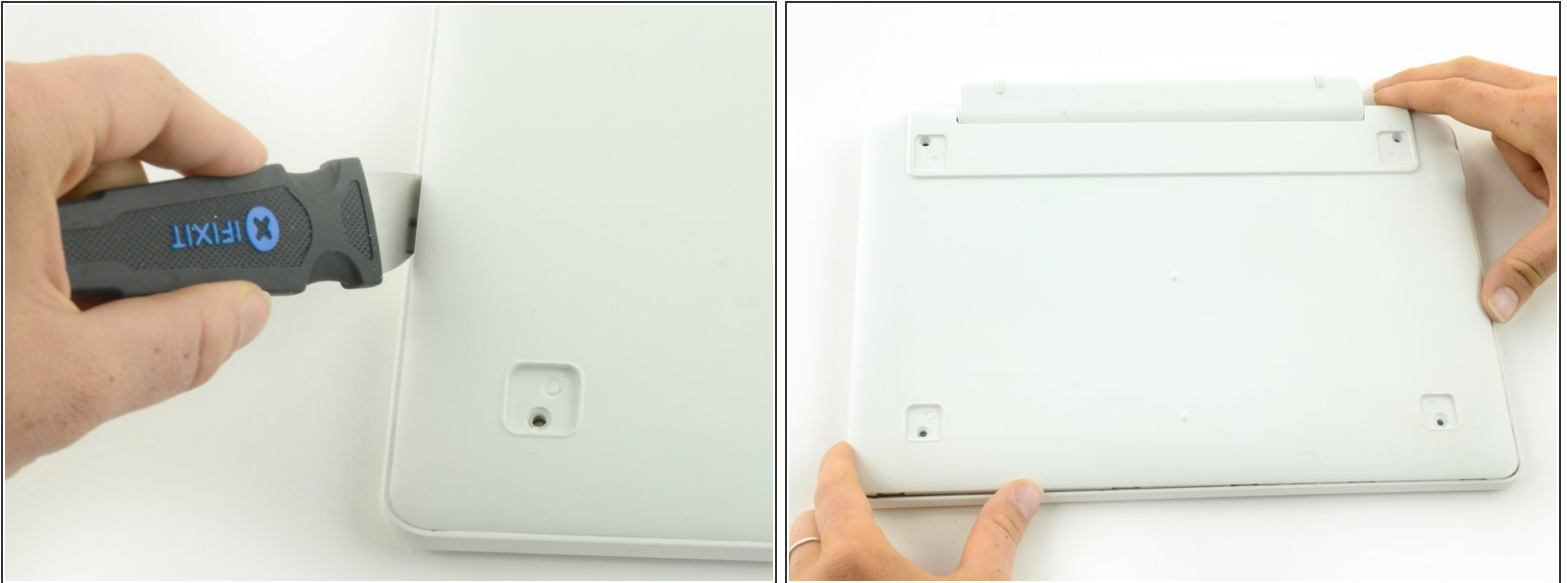
- [Phillips #000 Screwdriver](#) (1)
 - [Heavy-Duty Spudger](#) (1)
 - [Tweezers](#) (1)
 - [Jimmy](#) (1)
 - [Phillips #00 Screwdriver](#) (1)
-

Step 1 — Back Case



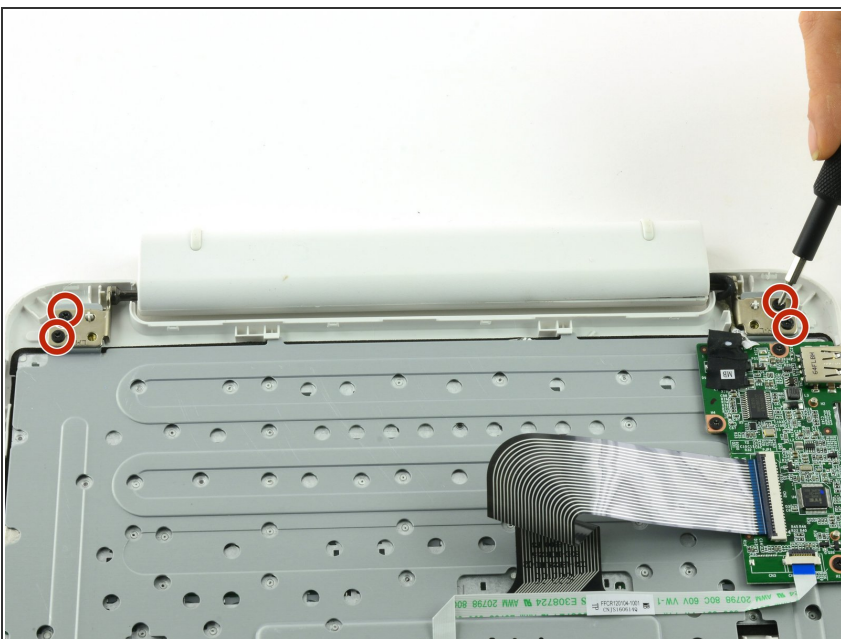
- Use a spudger to pry the four rubber pads away from the bottom of the case.
- Use a Phillips #00 screwdriver to unscrew the four 6.4 mm screws.

Step 2



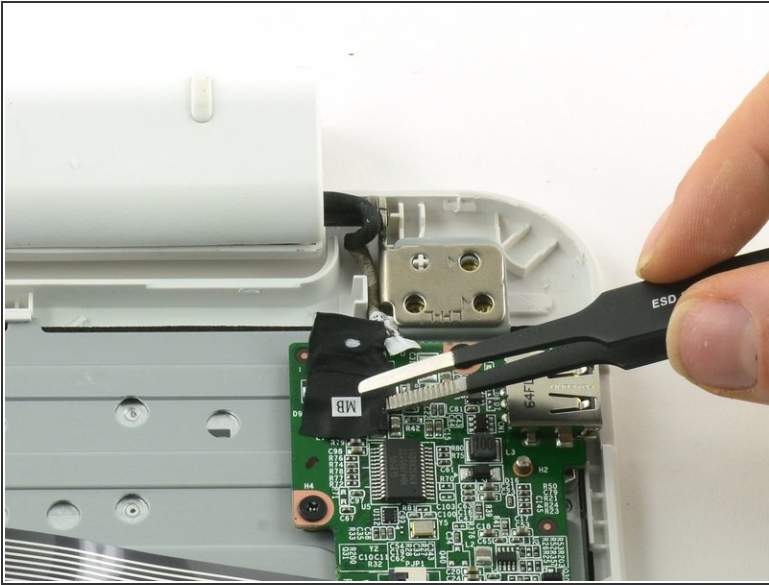
- Insert a Jimmy or other prying tool into the seam on the edge of the casing.
- Trace along the edges of the device until all clips are released.
- Lift the back case away from the device.

Step 3



- Use a Phillips #00 screwdriver to unscrew the four 6.4mm screws on the hinge mounts.

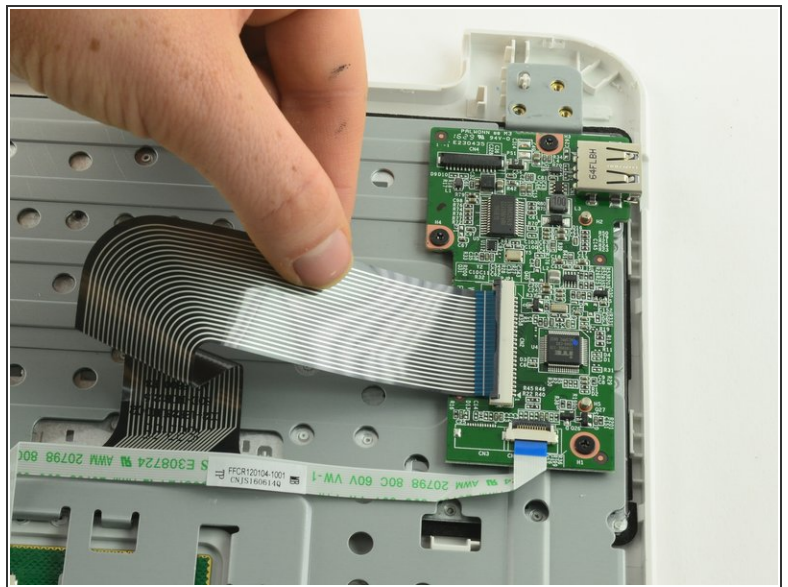
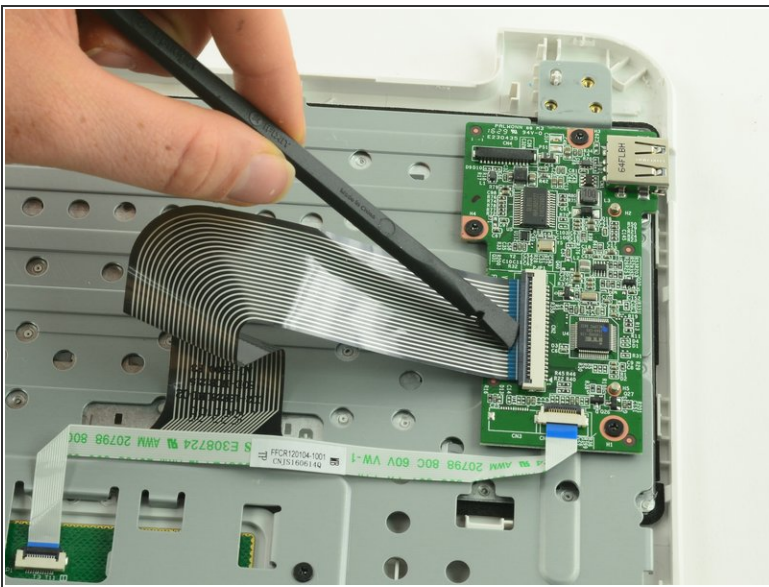
Step 4



- Use tweezers to lift the fabric cover and hinge connector away from the daughterboard.

⚠ Always use ESD safe tools when working with delicate electrical components.

Step 5 — Daughterboard



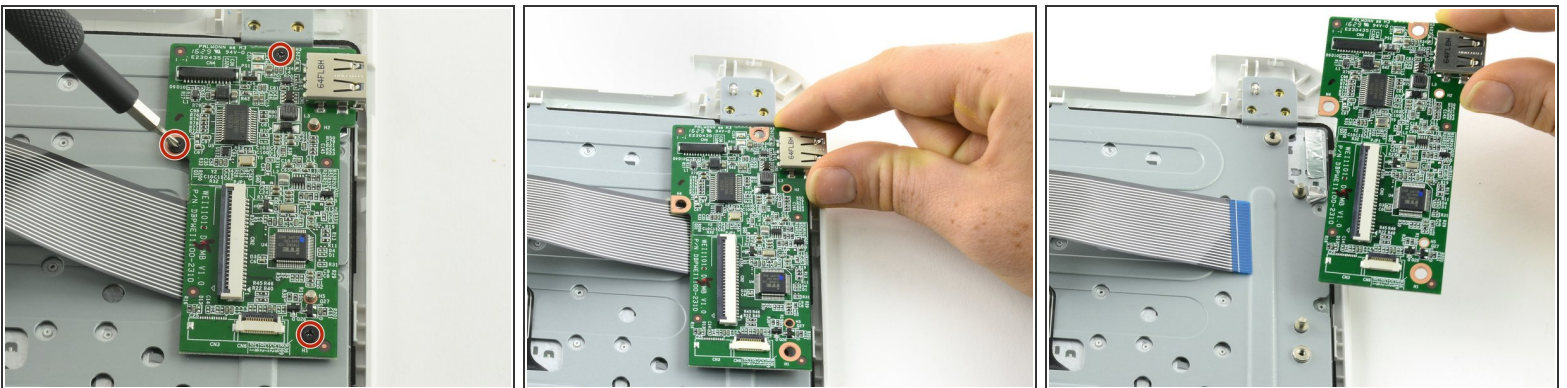
- Flip up the black retaining flap on the ZIF connector holding the large grey ribbon cable in place.
- Pull the ribbon cable straight out of the ZIF connector.

Step 6



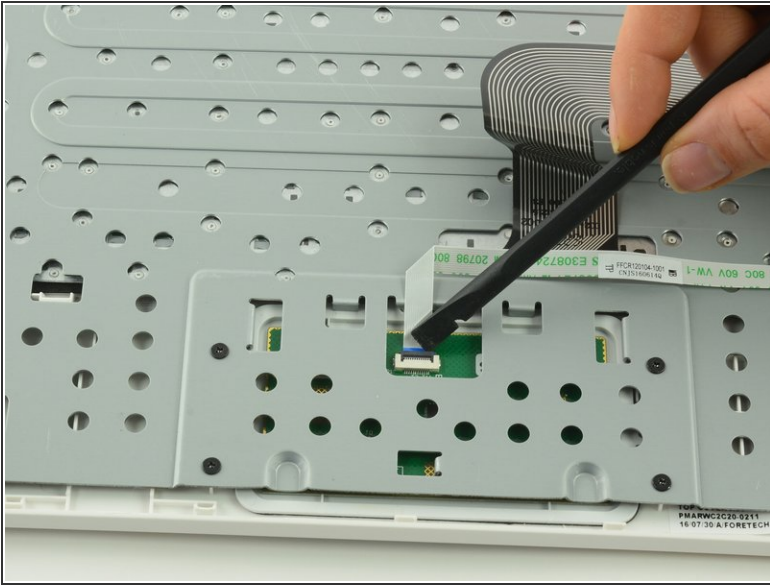
- Use the flat end of a spudger to flip up the black tab on the smaller ZIF connector.
- Use tweezers to pull the ribbon cable straight out of the connector.

Step 7



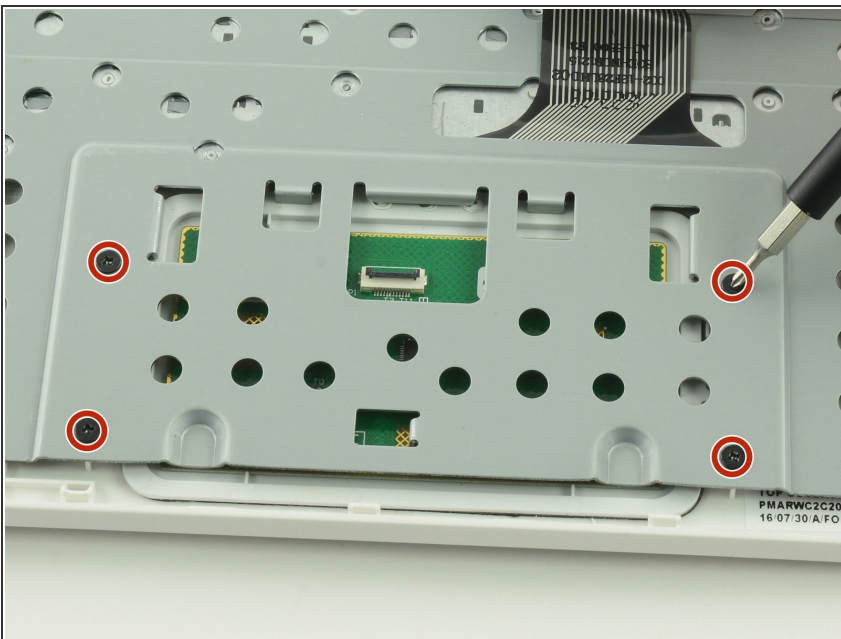
- Use a Phillips #000 screwdriver to unscrew the three 3.4mm screws.
- Lift the daughterboard away from the device to remove.

Step 8 — Keyboard Frame Prerequisite



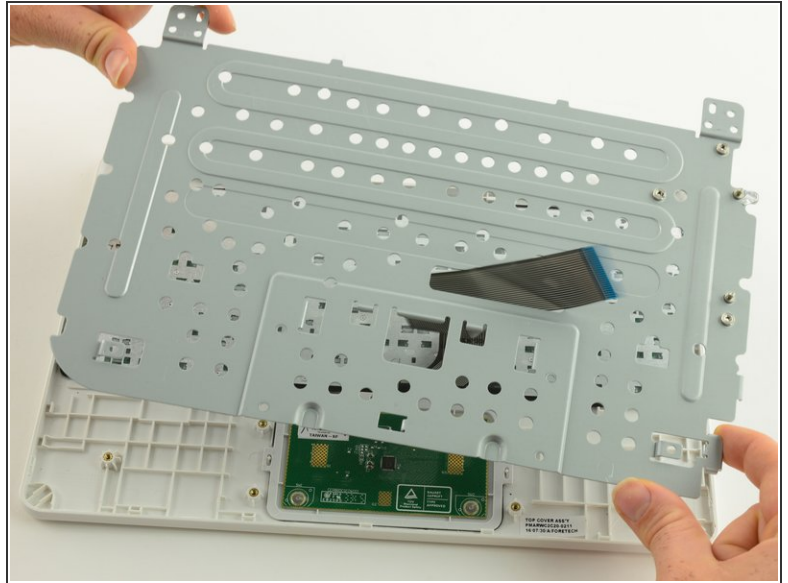
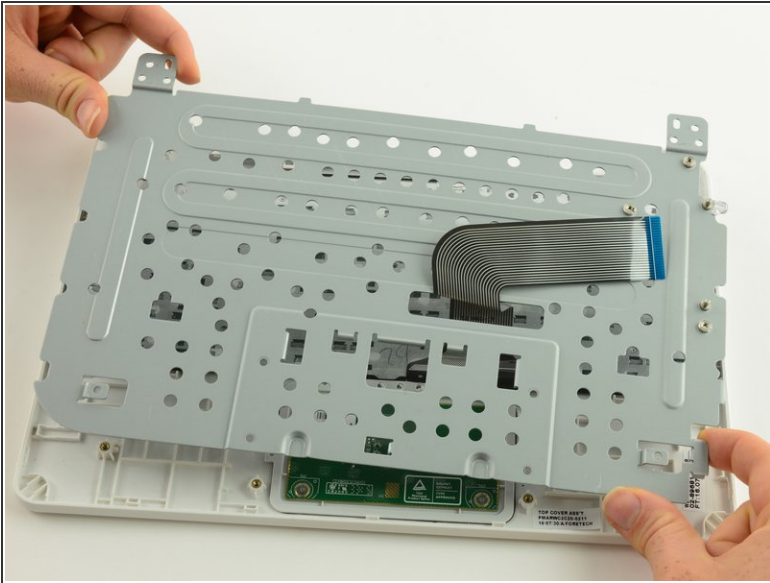
- Use a spudger to lift up the black retaining flap on the touchpad's ZIF connector.
- Pull the ribbon cable straight back to remove.

Step 9



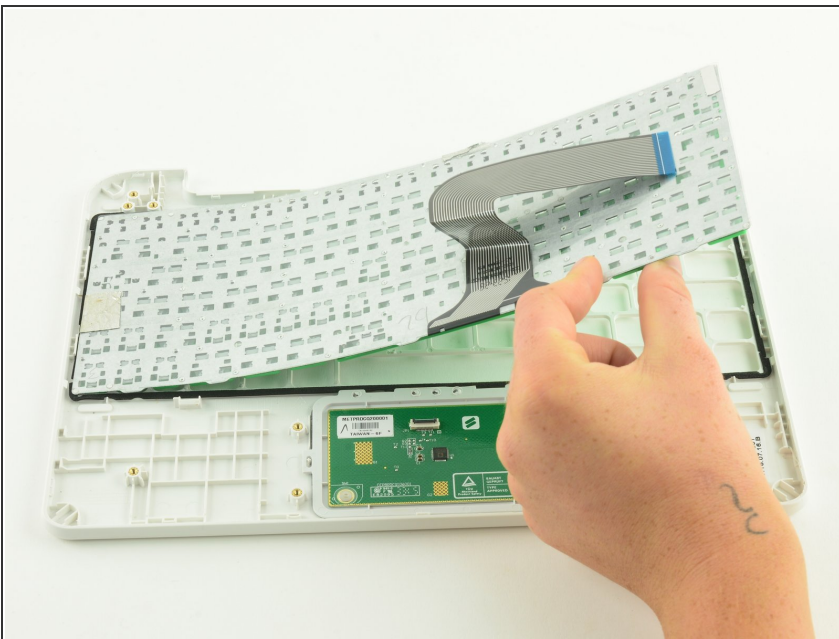
- Use a Phillips #00 screwdriver to unscrew the four 6.4mm screws holding the touchpad in place.

Step 10



- Feed the ribbon cable through the hole in the metal frame.
- Left the metal frame away from the device.

Step 11 — Keyboard



- Lift one end of the keyboard up to peel it away from the case.
- ⓘ Don't be alarmed if you hear cracking sounds as you pry the keyboard away from the frame. There are dozens of plastic rivets holding the keyboard to the plastic frame.

To reassemble your device, follow these instructions in reverse order.