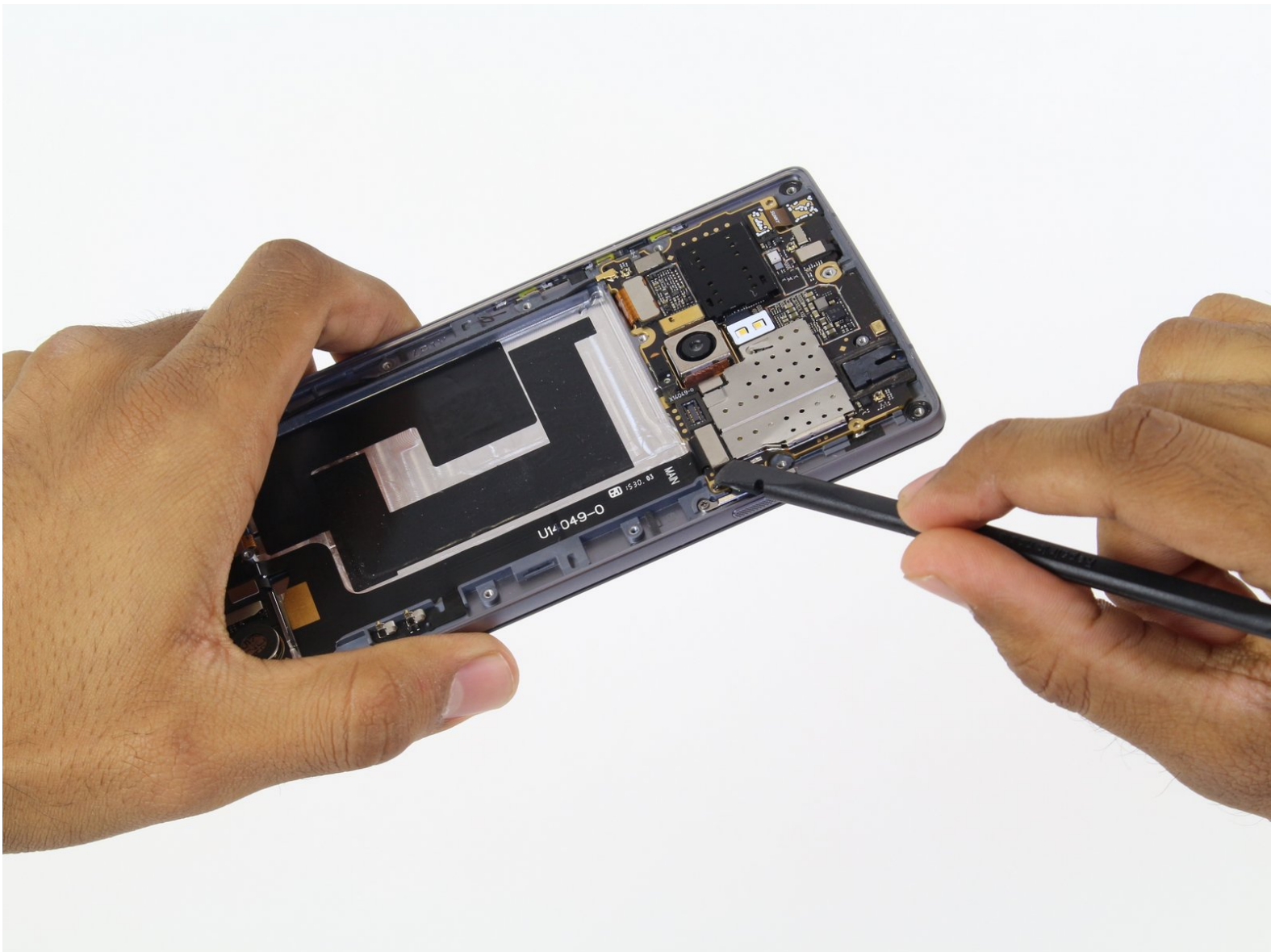




OnePlus 2 Charging Port Replacement

This guide will demonstrate how to replace the charging port of the OnePlus 2.

Written By: Kayla Williams



INTRODUCTION

If you are experiencing trouble charging or plugging in your phone, there may be something wrong with the charging port. This guide will show you how to remove and replace your charging port.

TOOLS:

- [Spudger](#) (1)
 - [Phillips #000 Screwdriver](#) (1)
 - [Tweezers](#) (1)
-

Step 1 — SIM Card



- Make sure that your phone is turned off before proceeding
- Use an opening pick, your thumbnail, or a spudger to gently pry off the external casing

Step 2



- Locate the SIM card tray on the back of the phone
- Use your thumb to gently slide out the tray

Step 3



- Remove the SIM card tray

Step 4 — Battery



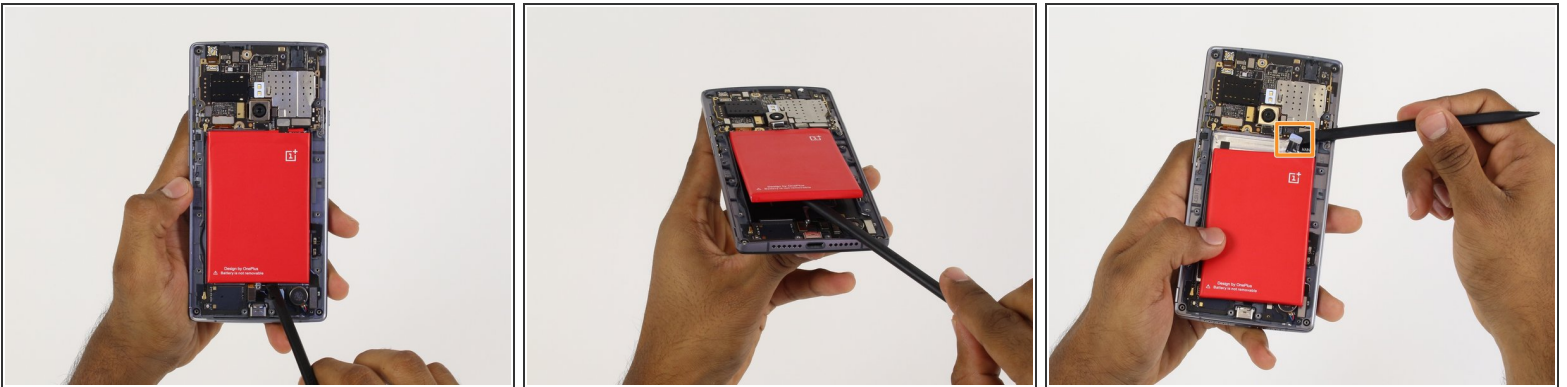
- Find and carefully remove all 6 rubber screw covers with the tweezers.
- Unscrew all 18 screws from the mid frame.

Step 5



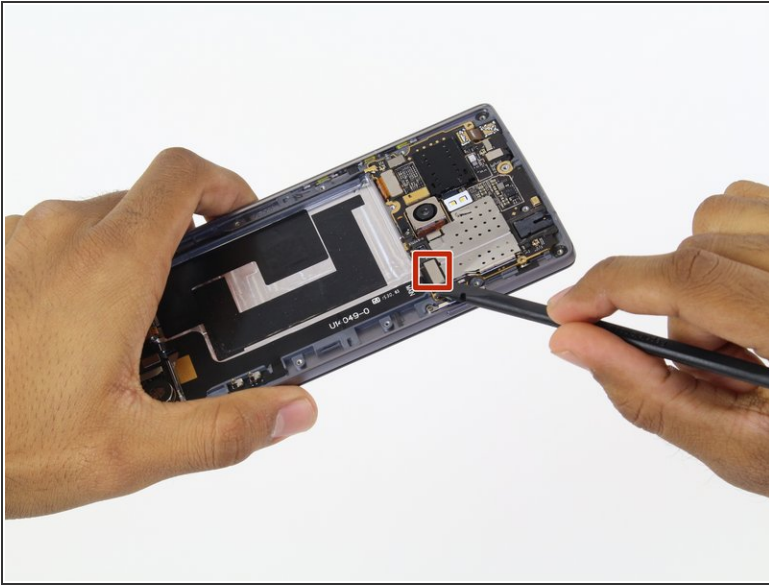
- **Carefully** pry up the mid frame from the back of the phone with the plastic opening tools.
- Slowly work your way around the phone releasing all the clips that hold the frame in place.

Step 6



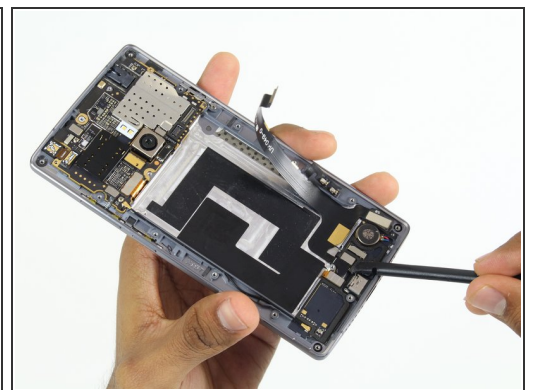
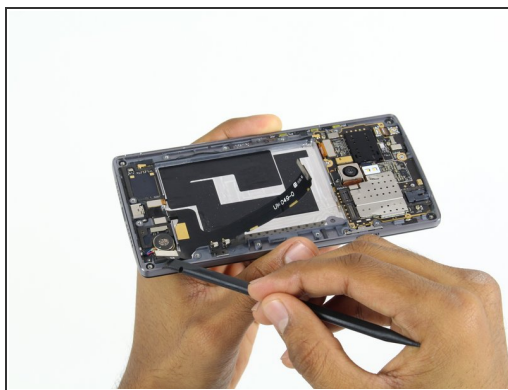
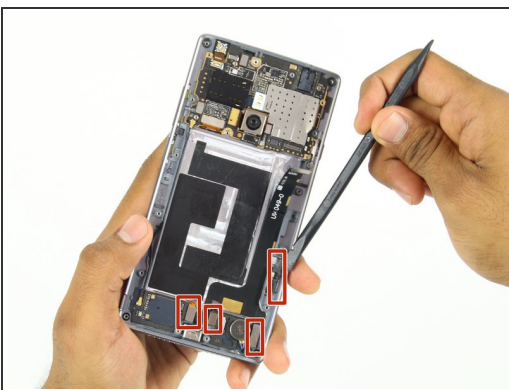
- Using the spudger tool, pry the battery up from the adhesive.
- Once the battery is loose from the adhesive holding it down, use the spudger tool to pry up the connection from the battery to the phone on the top right hand side.

Step 7 — Charging Port



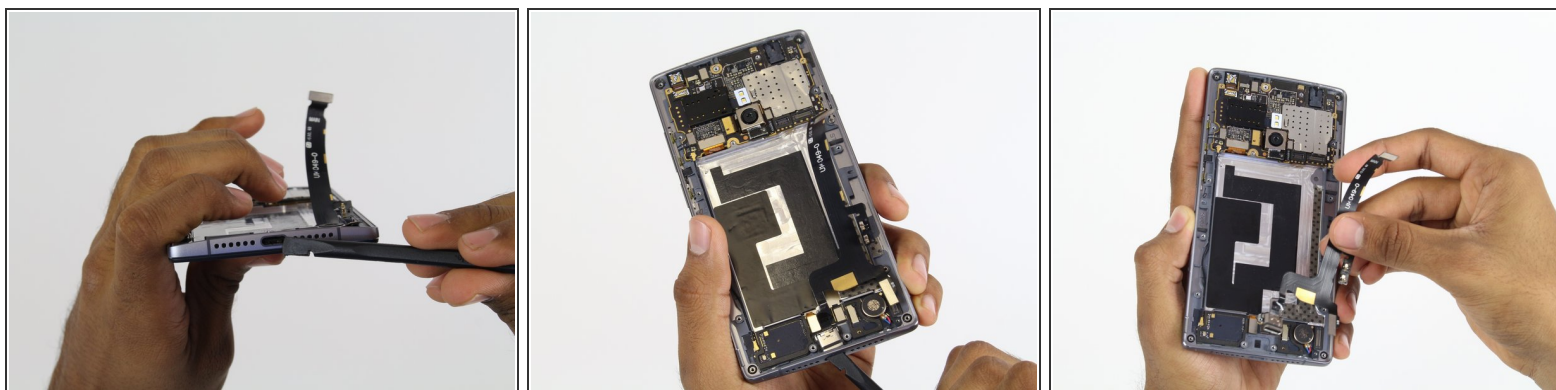
- Use the spudger tool to pry up the top connection of the charging port.
- Follow the cable with the spudger and slowly pry it up from the adhesive holding it down.
- Stop at the next connection.

Step 8



- Again, using the spudger tool, pry up the final 4 connections on the charging port
- Again, just like before, slowly follow the cable with the spudger tool lifting it up from the adhesive backing.

Step 9



- Using the spudger tool on the bottom of the phone, push the charging part inward.
- Once the charging port is free from the frame, use your fingers to remove the charging port the rest of the way.

To reassemble your device, follow these instructions in reverse order.