



# OnePlus 5 Fingerprint Scanner Replacement

Remove and replace the fingerprint scanner/home button for the OnePlus 5.

Written By: Arthur Shi



## INTRODUCTION

Follow this guide to remove and replace a defective fingerprint scanner/home button for the OnePlus 5. The fingerprint scanner is layered underneath the loudspeaker module and the daughterboard. The hardest part of the guide is getting the frame clips of the back cover free to access the internals of the phone.

*Some guide images will show the battery already removed from the phone. You do not need to remove the battery for this procedure.*



### TOOLS:

- [SIM Card Eject Tool](#) (1)
  - [T2 Torx Screwdriver](#) (1)
  - [Suction Handle](#) (1)
  - [iFixit Opening Tools](#) (1)
  - [Phillips #00 Screwdriver](#) (1)
  - [Spudger](#) (1)
  - [Tweezers](#) (1)
  - [Electrical Tape in 6 Assorted Colors](#) (1)
-

## Step 1 — SIM Card Tray



- Insert a SIM card eject tool, bit, or a straightened paperclip into the small hole below the SIM card tray, located near the rear cameras on the edge of the phone.
  - Press firmly to eject the tray.
- ☒ When reinserting the SIM card tray, ensure that it is in the proper orientation as shown.

## Step 2 — Back Cover



- Remove the two 2.6 mm T2 screws straddling the USB-C port on the bottom edge of the phone.

## Step 3



**⚠ There is a high risk of damaging the display panel if this opening procedure is improperly followed.**

**i** The following four steps show how to pry the rear case from the plastic frame. Read through the steps first before attempting the procedure.

**⚠** There are two different seams between the body and the screen of the phone:

- *Display panel seam*: This seam is part of the display assembly. **Do not pry** at this seam, or you will separate and damage the display panel.
- *Frame seam*: This is where the plastic frame meets the back cover. **Only pry at this seam.**
- There are twelve clips that hold the frame against the rear case. Be aware of their location as you pry the back cover off in the following steps.

## Step 4



- i** As you work, try not to accidentally power on the phone. If you do, turn the phone off before resuming disassembly.
- Place a suction cup near the bottom edge of the display.
  - Pull on the suction cup with strong steady force.
  - Press the edge of an opening tool straight into the frame seam near the suction cup until the edge wedges between the plastic frame and the back cover's lip.
- i** Due to tight tolerances, this will take substantial force. Using a new opening tool with an unmarred edge will help with this step.

## Step 5



- Once the opening tool's edge is wedged in position, carefully slide the tool along the bottom edge of the phone.
- Carefully guide the opening tool around the left corner of the phone while keeping the tool's edge within the seam.

## Step 6



- Lever the opening tool to release the first clip from the frame.



## Step 7



- Continue sliding the opening tool along the long edge, releasing the clips along the way.
- ⓘ The last clip in the top-left corner near the front-facing camera is recessed and can be difficult to release. Take your time and use the flat end of a spudger or an opening pick to help.

## Step 8

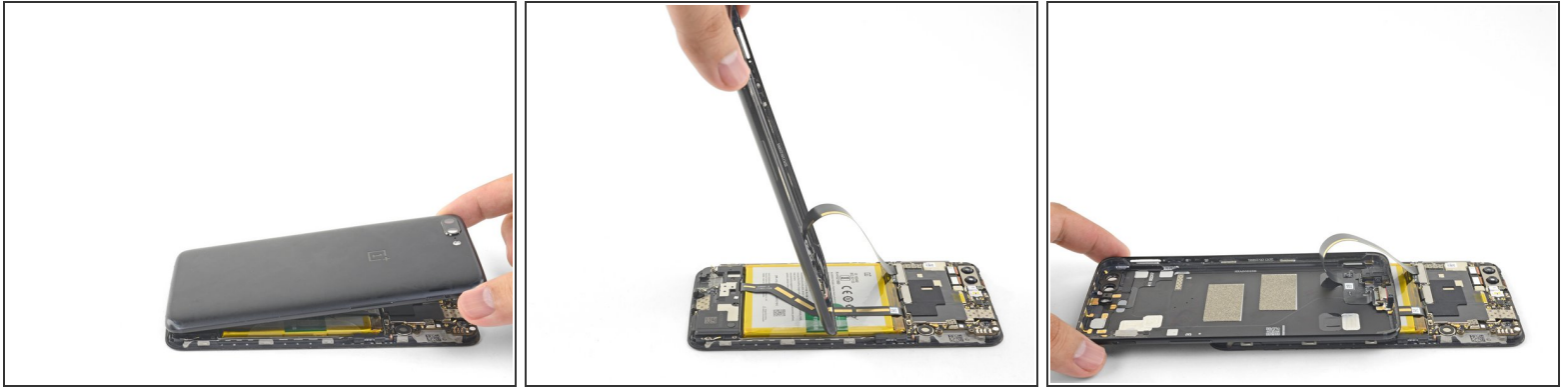


- With the bottom and left edge of the phone freed, gently wiggle the frame to release the top and right edge clips.

- ⚠ The frame is still connected to the back cover by a long flex cable. Do not remove the back cover.
- ★ During reassembly, pause here to test your phone's functionality before securing the back cover.
- ★ To reinstall the back cover:
  - [Align the top edge of the frame](#) to the back cover and ensure that the top clips slip into place.
  - [Squeeze along the long edges of the phone](#) to snap the remaining clips into place.

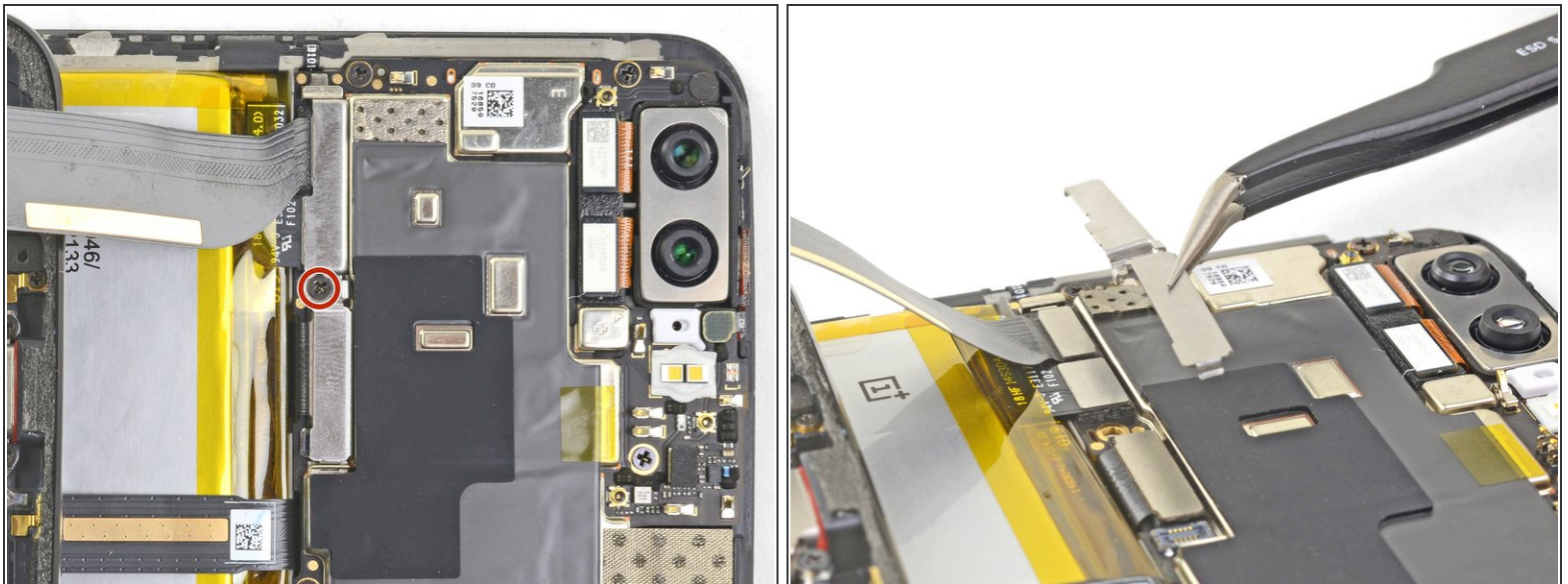


## Step 9



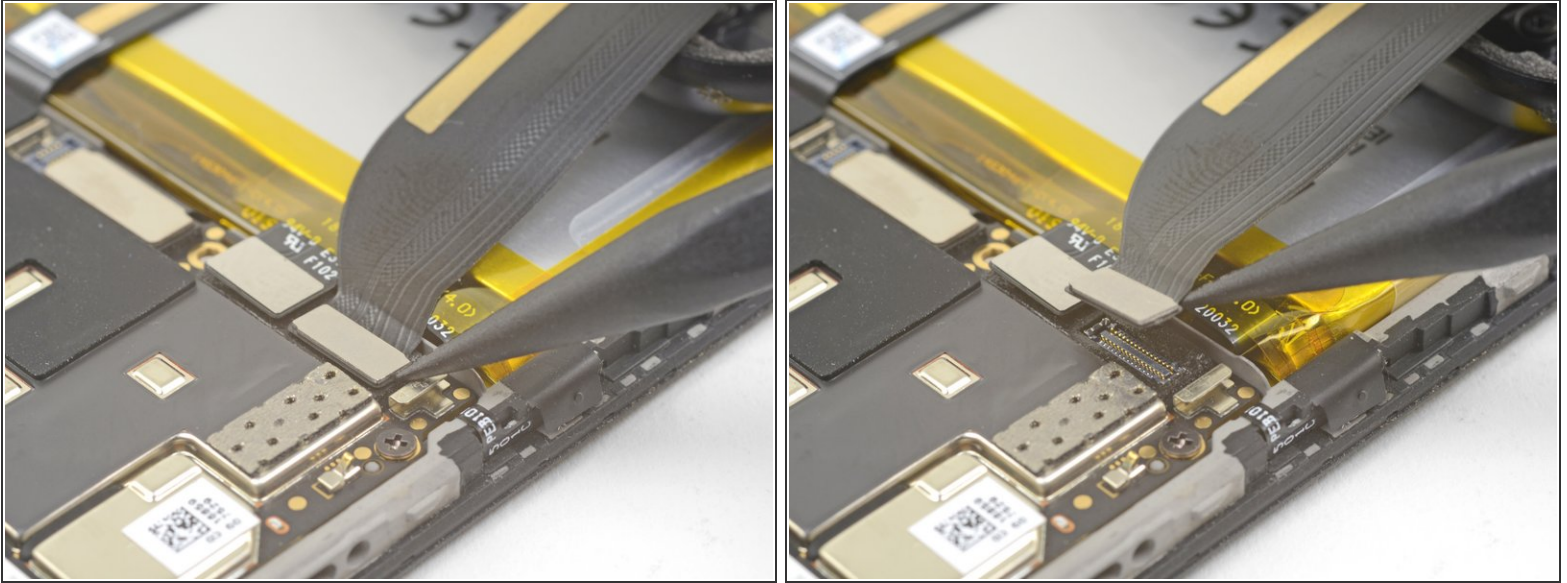
- With all the clips released, flip the phone over so that the display is face-down.
- Swing the back cover around and rest it on top of the exposed frame.
  - ⓘ Be careful not to stress the flex cable connecting the back cover and the frame.

## Step 10



- Remove the 2.6 mm Phillips screw holding the cable bracket above the battery in place.
- Lift up and remove the cable bracket.
- ☑ To reinstall the bracket, [position one end into place](#), and bend the bracket slightly to spring the other end into place.

## Step 11



- Use the point of a spudger to pry up and disconnect the back cover flex cable from its socket.
- i** To re-attach [press connectors](#) like this one, carefully align and press down on one side until it clicks into place, then repeat on the other side. Do not press down on the middle. If the connector is misaligned, the pins can bend, causing permanent damage.

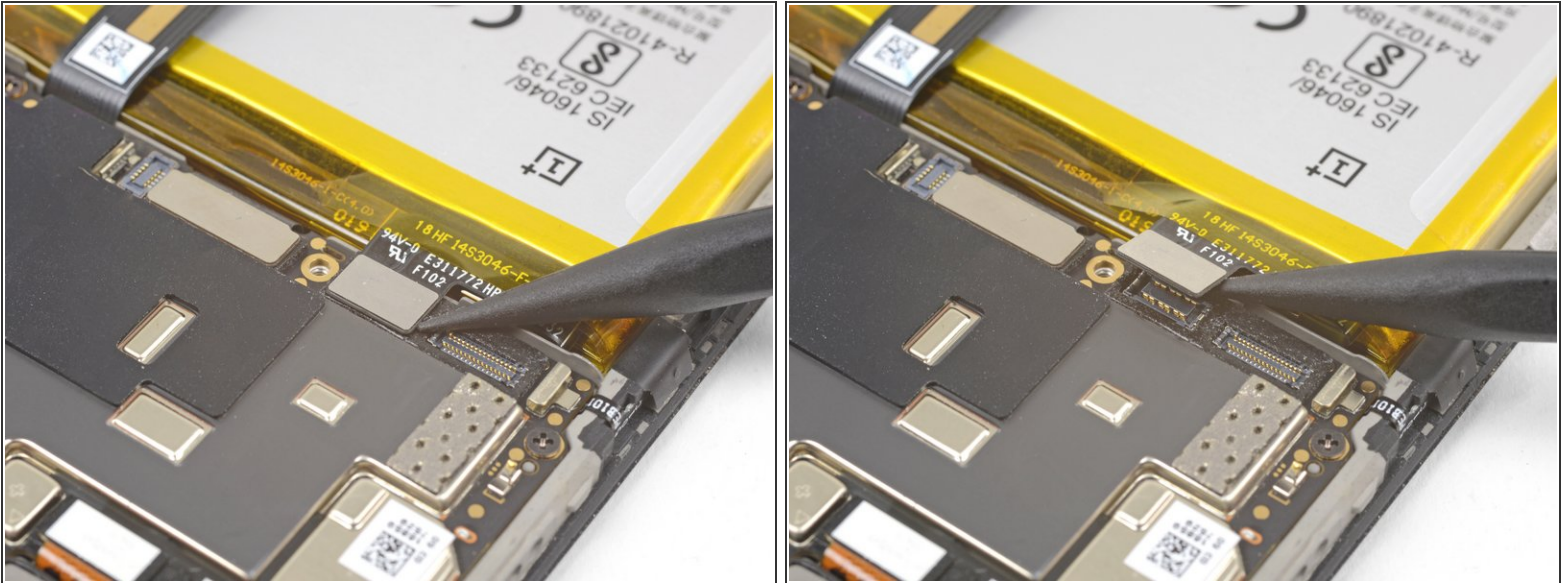
## Step 12



- Remove the back cover.



## Step 13 — OnePlus 5 Battery Disconnect



- Use the point of a spudger to pry up and disconnect the battery connector from its socket.

## Step 14 — Loudspeaker



- Remove the six 2.6 mm Phillips screws securing the loudspeaker to the frame.

## Step 15



- Insert the flat end of a spudger into the corner of the loudspeaker assembly and pry slightly, loosening the loudspeaker from its recess.

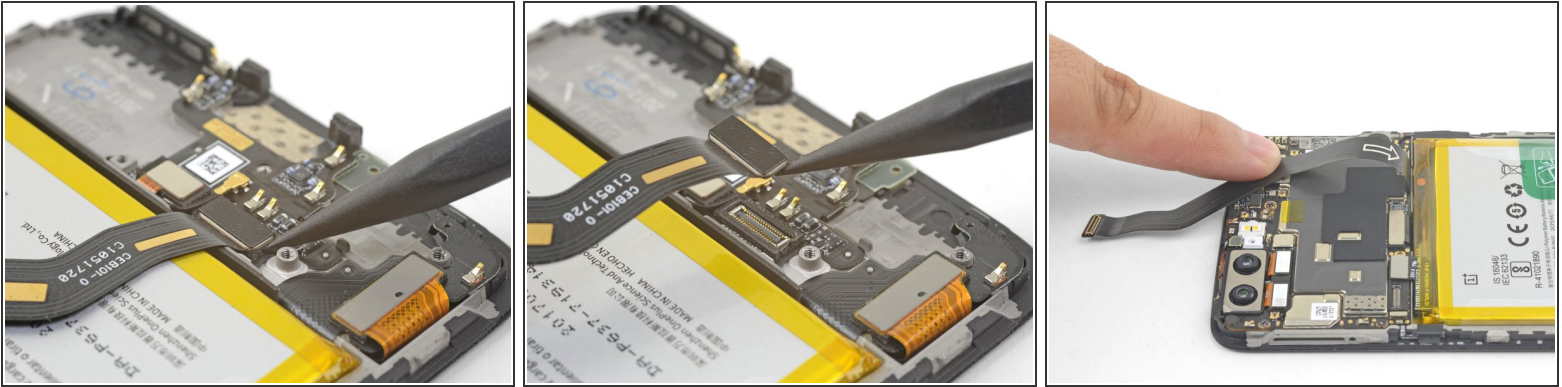
## Step 16



- Remove the loudspeaker.
- ★ To reinstall the loudspeaker, align the loudspeaker's bottom edge to the frame, then press the assembly into place.
- i During reinstallation, make sure that the [display cable connector](#) under the loudspeaker assembly is still securely fastened.

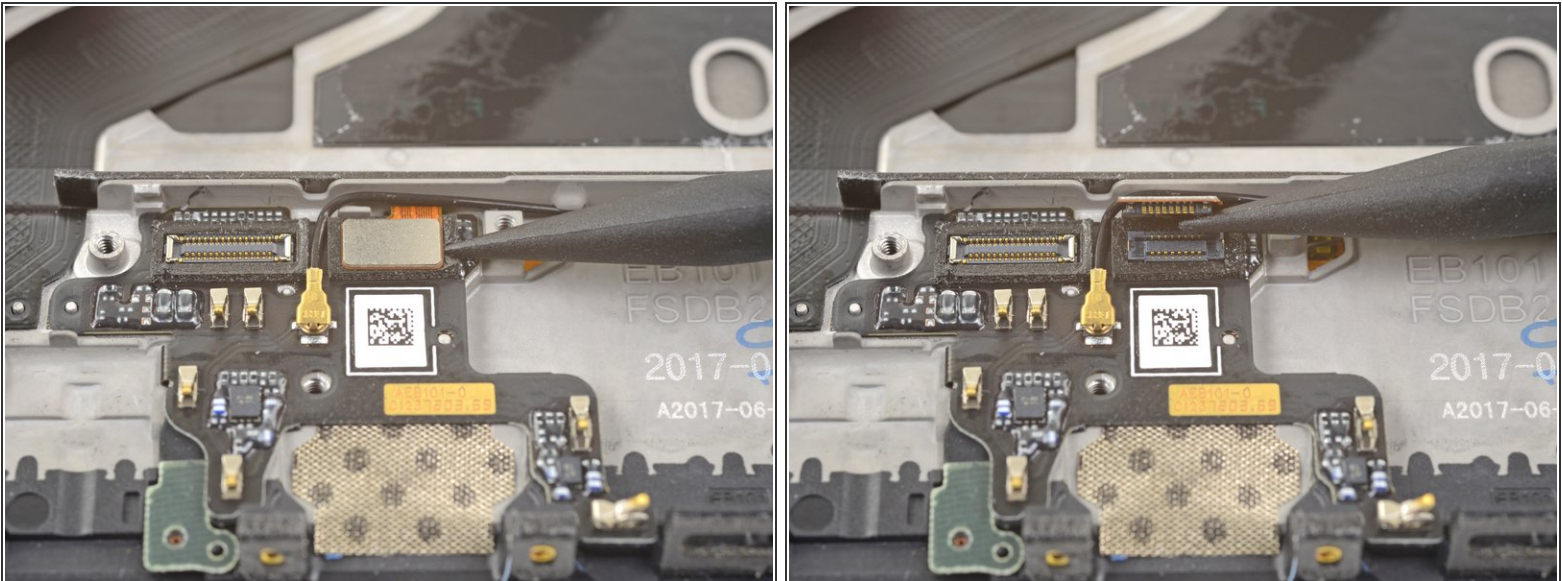


## Step 17 — OnePlus 5 Interconnect Cable Disconnect



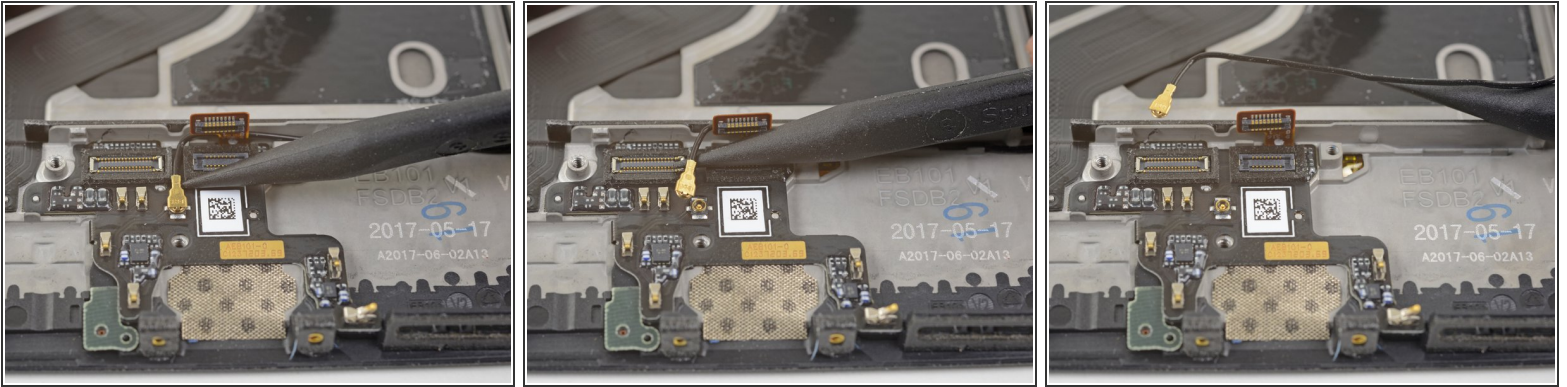
- Use the point of a spudger to pry up and disconnect the interconnect flex cable from the socket.
- ⓘ If you are replacing the battery, bend the interconnect flex cable away from the phone and secure it out of the way with a rubber band or tape.

## Step 18 — Daughterboard



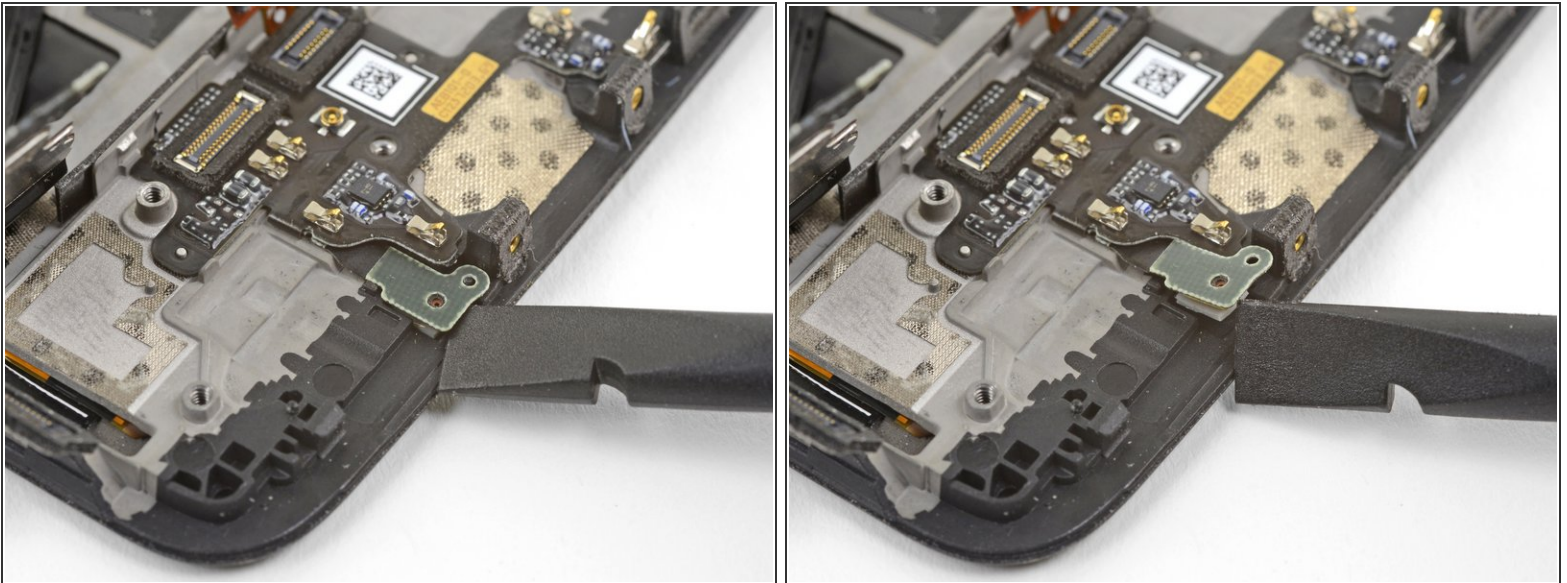
- Use the point of a spudger to pry up and disconnect the fingerprint scanner connector from its socket on the daughterboard.

## Step 19



- Slip the point of a spudger underneath the antenna interconnect cable and pry up to disconnect it from its socket on the daughterboard.
- De-route the antenna interconnect cable out of the way of the daughterboard.

## Step 20



- Insert the edge of a flat end of the spudger underneath the microphone board and twist slightly to release the board's adhesive.

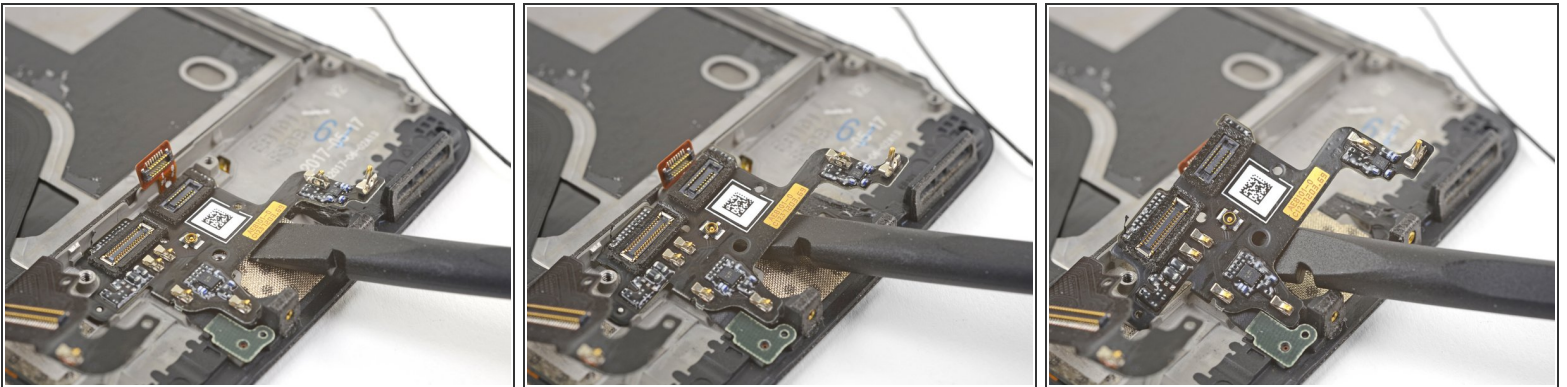


## Step 21



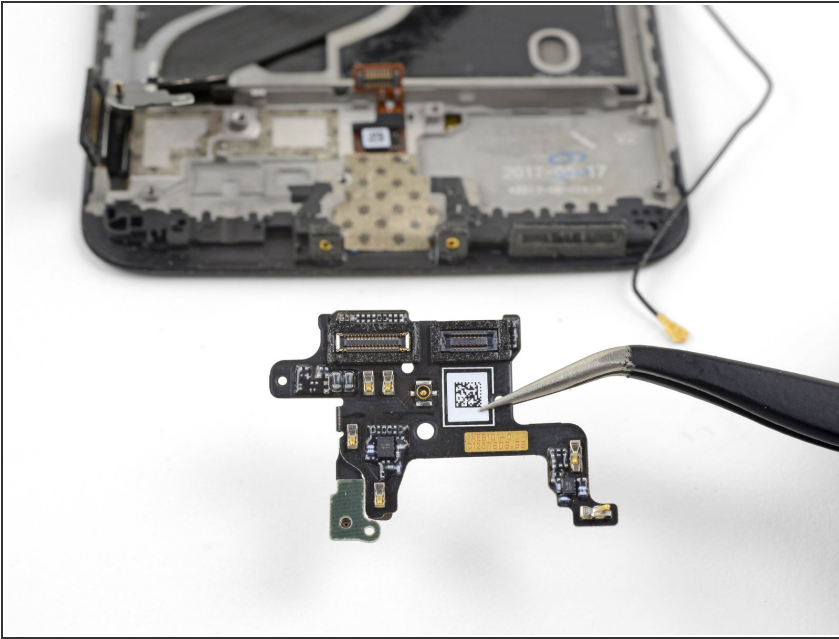
- Slide the flat end of a spudger or the point of an opening pick underneath the daughterboard near its right edge.
- Gently pry to loosen the daughterboard from its recess.
- ❗ If the daughterboard begins to bend significantly, **stop** and pry from a different angle.

## Step 22



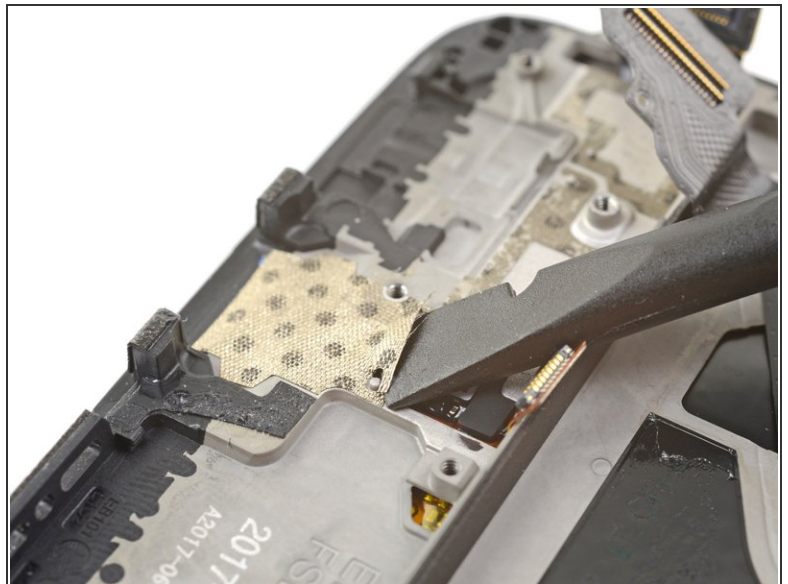
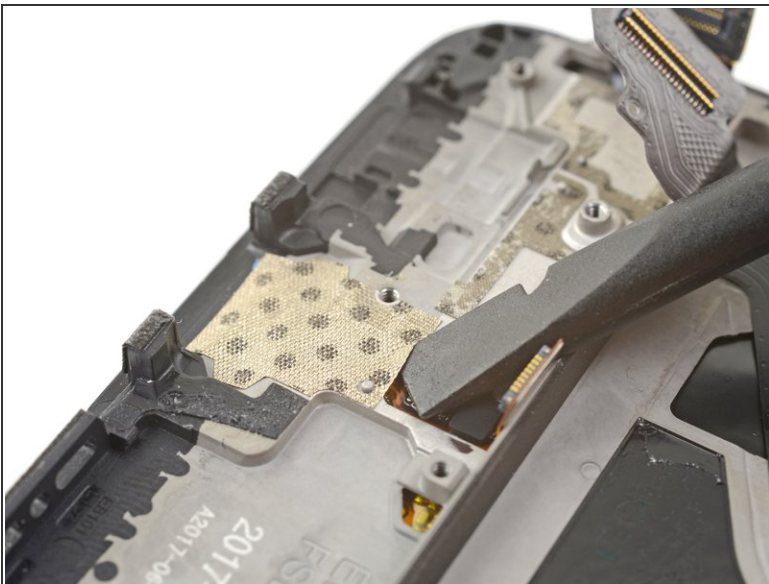
- Insert the flat end of a spudger underneath the daughterboard, this time approaching it from the bottom.
- Twist and slide the spudger slightly to release the daughterboard from its recess.

## Step 23



- Remove the daughterboard.
- ★ If you are installing the daughterboard onto a replacement frame, be sure to peel off the [blue adhesive liners for the daughterboard](#) before sticking it in place.

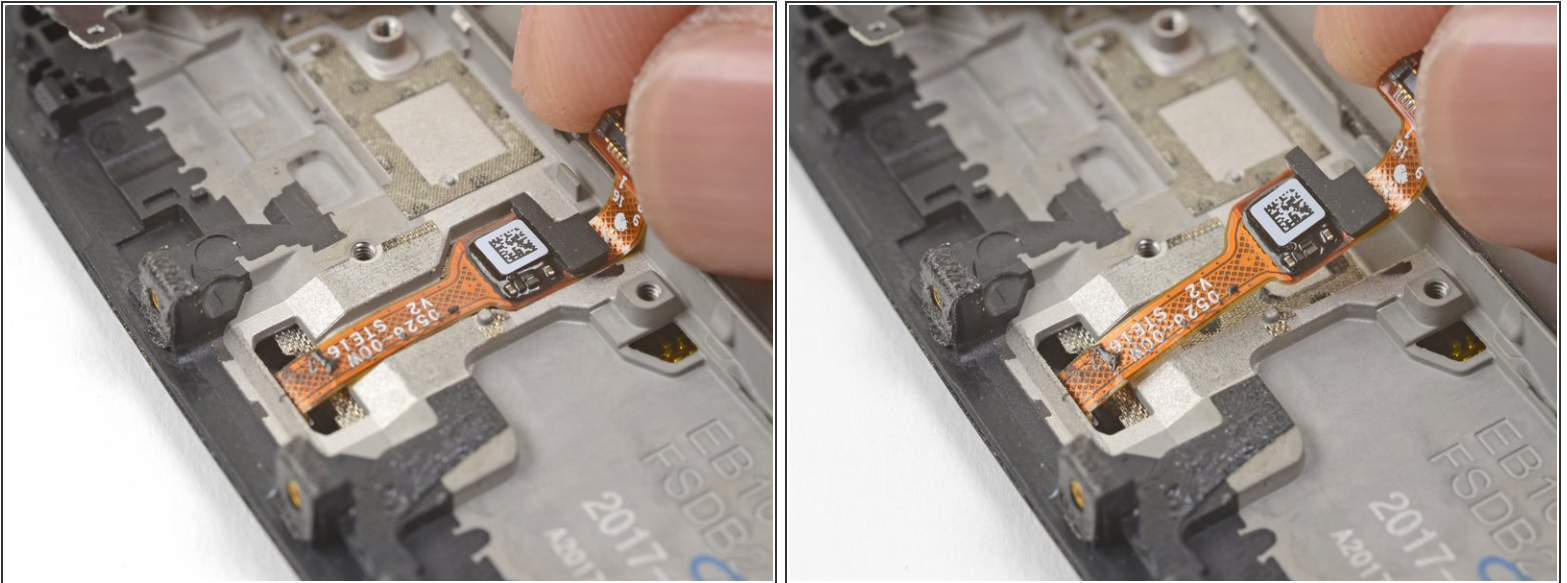
## Step 24 — Fingerprint Scanner



- Slide the flat end of a spudger underneath the tape covering the fingerprint scanner.
- Lift up to pry and remove the tape.
- ★ You will most likely not be able to reuse the tape during reinstallation. Replace it with a piece of [electrical tape](#).



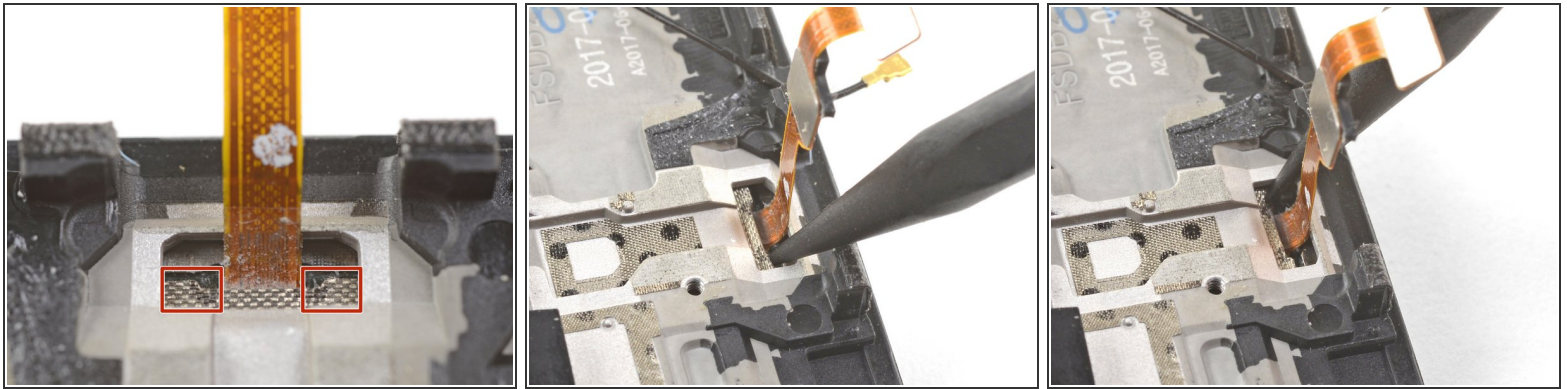
## Step 25



**⚠ If you are planning to reuse the fingerprint scanner, be extremely careful pulling the flex cable up. It is very delicate and prone to breaking.**

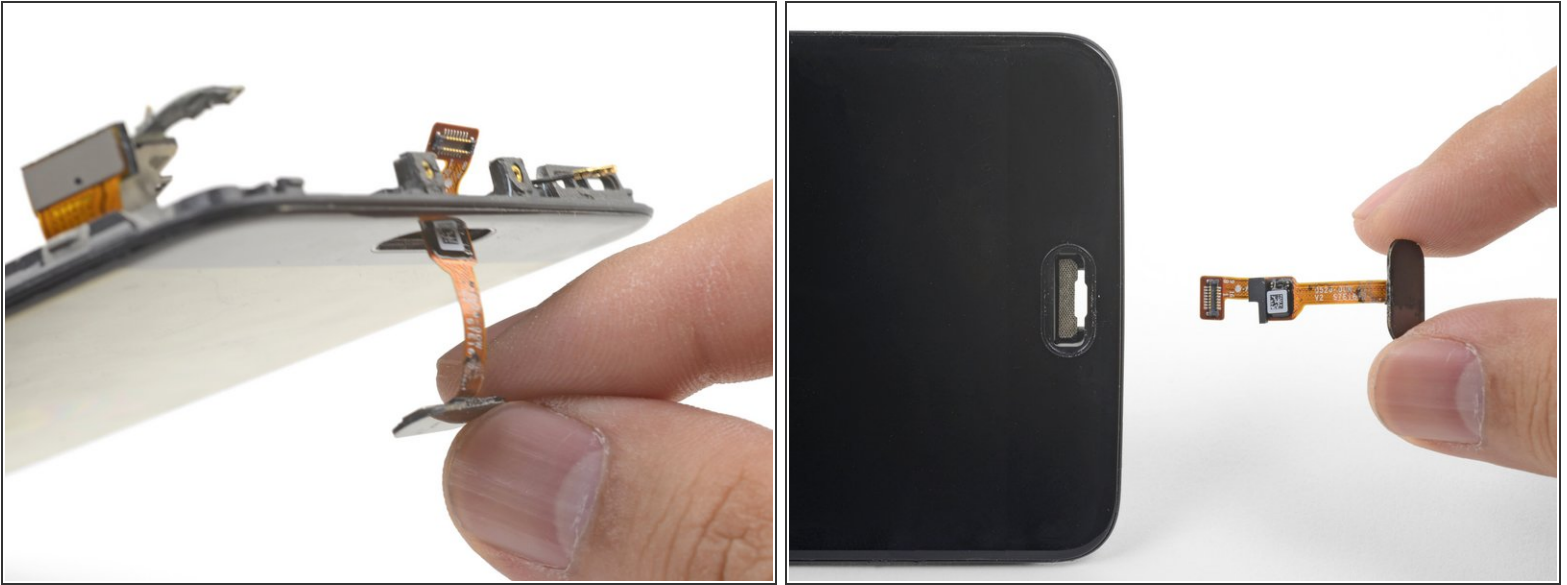
- Use your finger to gently lift up the connector end of the fingerprint scanner. Pull upwards slowly. Do not pull directly away from the fingerprint scanner.
- Keep pulling upwards until the fingerprint scanner cable is freed from its recess.

## Step 26



- Insert the point of a spudger into the marked areas on either side of the flex cable, and push until the fingerprint scanner is loosened from its recess.
- ⚠ Do not apply pressure directly onto the delicate flex cable.
- ⓘ If the fingerprint scanner is not coming loose, make sure you are pressing the spudger's point against the backside of the scanner as indicated in the first image, and not [the metal plate](#) below it.

## Step 27



- Once the fingerprint scanner is loosened from its recess, carefully thread its flex cable through the cutout, out of the front of the display.
  - Remove the fingerprint scanner.
- ✦ If you are installing the fingerprint scanner onto a replacement frame, be sure to [peel off the blue adhesive liner for the fingerprint scanner](#) before sticking it in place.

To reassemble your device, follow these instructions in reverse order.

Repair didn't go as planned? Check out our [OnePlus 5 Answers Community](#) for troubleshooting help.