



Written By: Kira D'Agostino



INTRODUCTION

If your OnePlus 6T is experiencing battery drainage issues or won't hold a charge/won't charge, then it may be time to replace the phone's battery.



TOOLS:

- [iOpener](#) (1)
- [Plastic Cards](#) (1)
- [Tweezers](#) (1)
- [Jimmy](#) (1)
- [Hairdryer or Heat tool](#) (1)
- [Halberd Spudger](#) (1)
- [Phillips #00 Screwdriver](#) (1)



PARTS:

- [OnePlus 6T Replacement Battery](#) (1)
- [OnePlus 6T SIM Card Tray](#) (1)
- [OnePlus 6T Back Cover](#) (1)

Step 1 — Back Cover



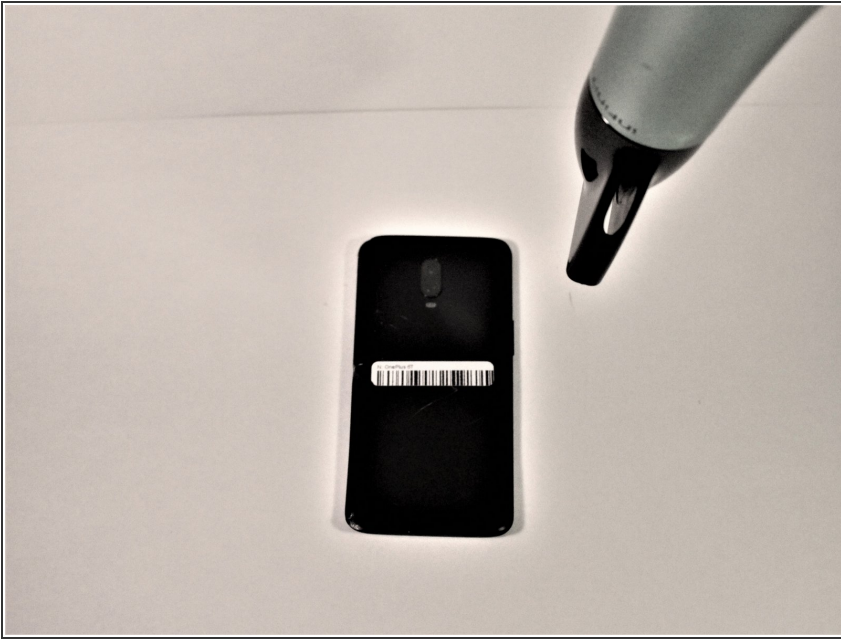
- Make sure the phone is powered off and placed with the back cover facing towards you on a stable surface.

Step 2



- Pop open the SIM card tray by inserting a SIM card removal tool into a small hole on the upper-left side of the phone.
- Carefully remove the SIM card from its tray.

Step 3



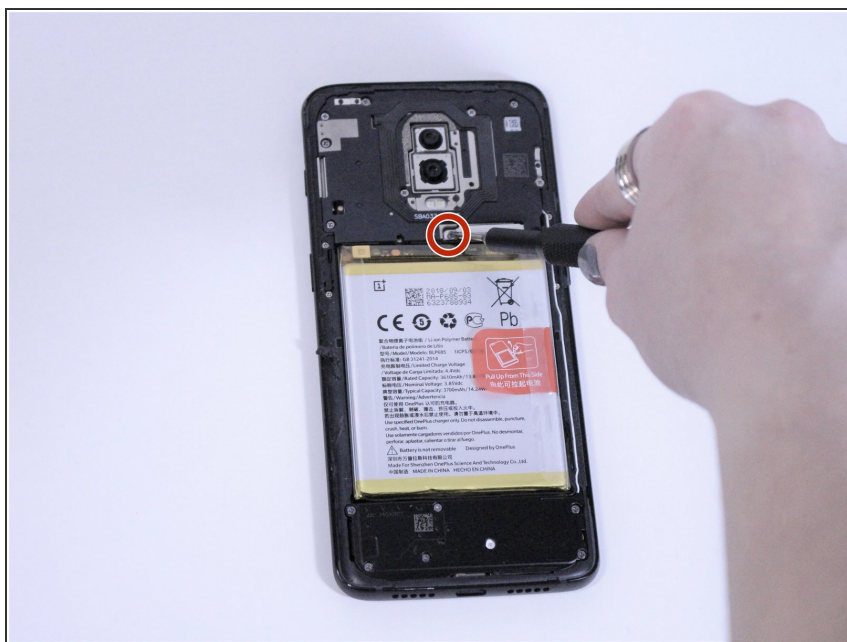
- Loosen the binding glue within the phone using a hairdryer or an [iOpener](#).
- ⓘ If you choose to use a hairdryer, hold the dryer at least eight inches from the phone and apply heat for two minutes in a circular motion around the edges of the phone.

Step 4



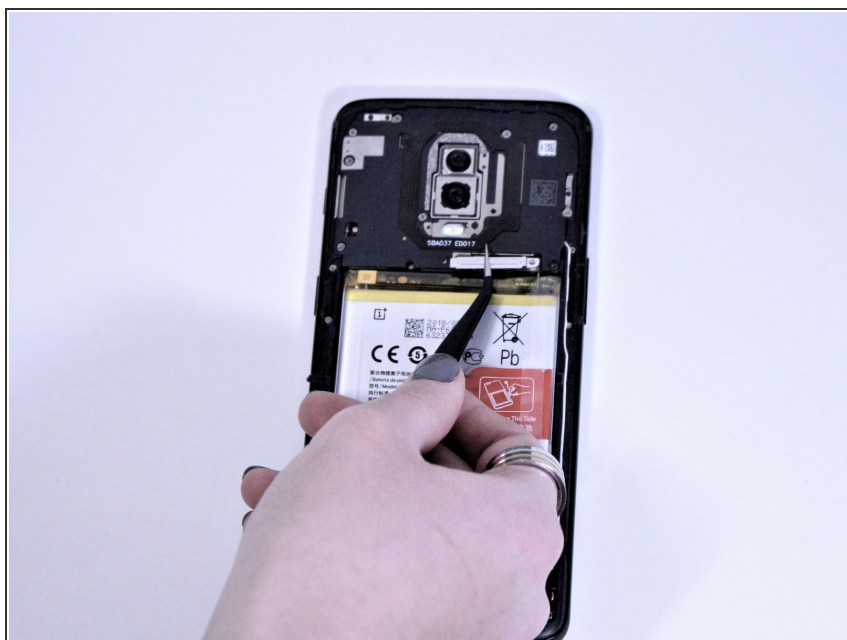
- Insert a Jimmy under one of the heated corners of the phone to lift it slightly.
- Insert a plastic card underneath the slightly lifted lip on the back cover and gently glide the card under the lifted phone casing.
- ⓘ There will be a small amount of tension, but this is normal as the card is removing the adhesive within the phone.
- Remove the back cover from the phone.

Step 5 — Battery



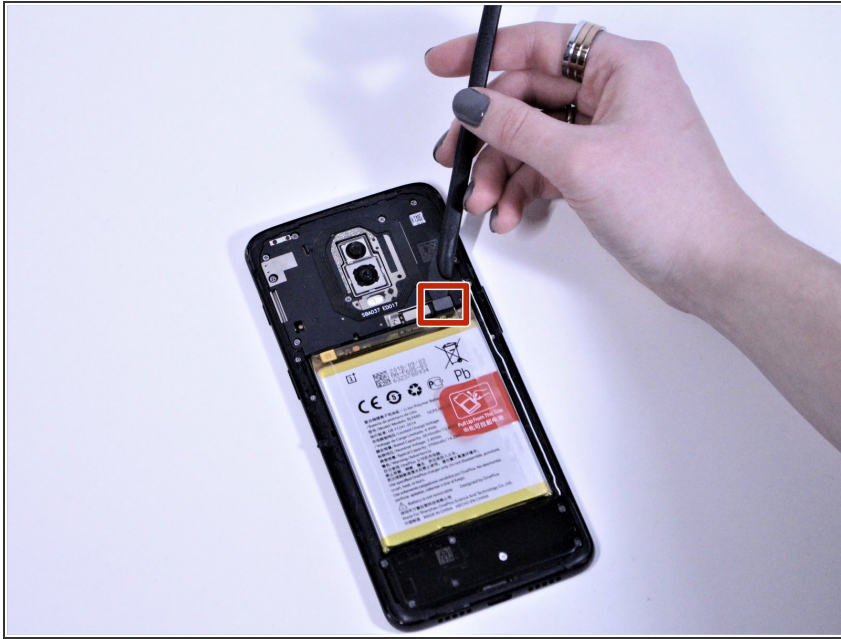
- Remove the single 3mm Phillips #00 screw from the battery.

Step 6



- Using tweezers, carefully remove the small metal bracket covering the battery connector.

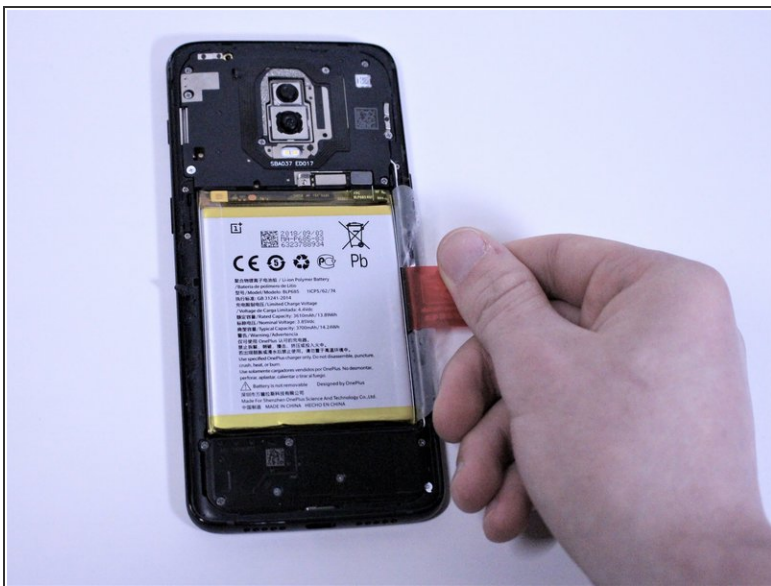
Step 7



- Using a halberd spudger, gently lift and disconnect the battery connector from the phone.

⚠ Do not use a metal tool for this step as it may puncture the battery and cause it to leak toxic liquid.

Step 8



- Grab the red tab on the right hand side and pull until the battery dislodges.

i It will have some tension as there is tape holding the battery in place. Only remove the battery. Make sure to leave the tape as it will ensure the next battery stays in place.

To reassemble your device, follow these instructions in reverse order.