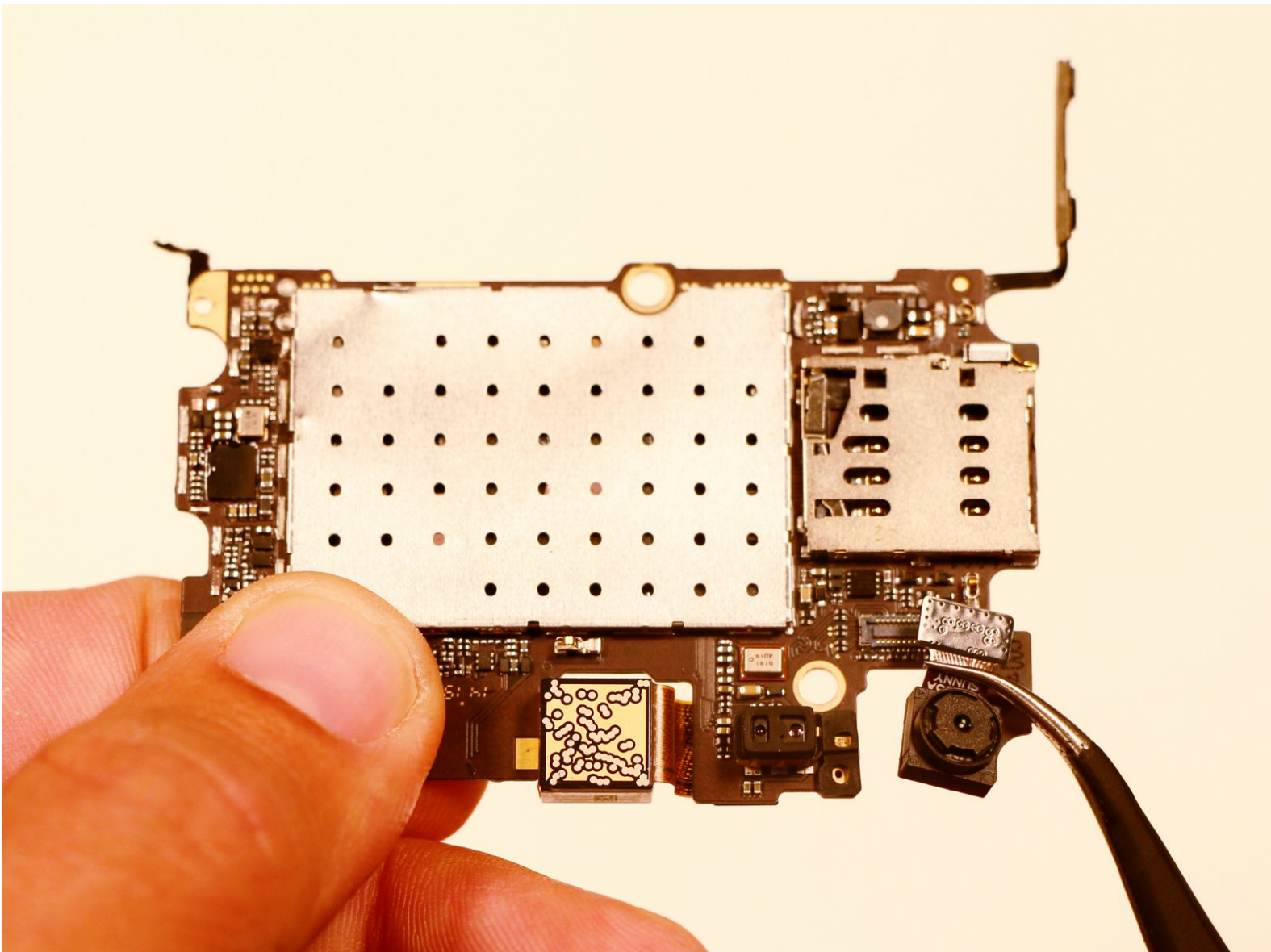




OnePlus One Rear Facing Camera Replacement

This guide will walk you through removal and replacement of the rear camera in your OnePlus One smartphone.

Written By: Javier Cruz





TOOLS:

- [Tweezers](#) (1)
- [Phillips #00 Screwdriver](#) (1)
- [iFixit Opening Tools](#) (1)
- [SIM Card Eject Tool](#) (1)
- [Spudger](#) (1)



PARTS:

- [OnePlus One Rear Camera](#) (1)

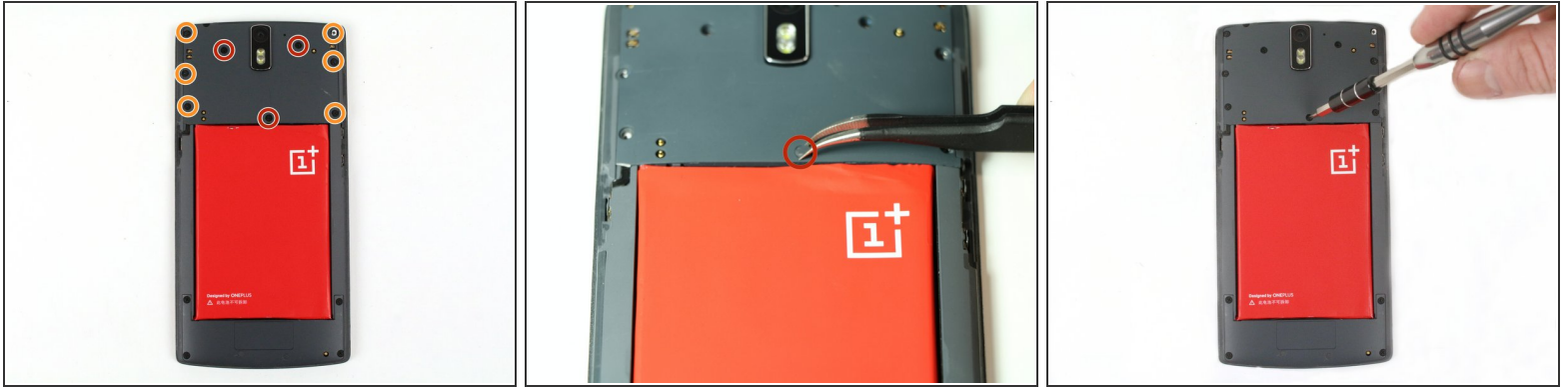
Step 1 — Battery



- Remove the SIM tray.
- Using a plastic opening tool, carefully separate the back panel from the main body assembly of the phone. Be extra careful around the SIM slot or other weak areas.
- You may encounter some resistance due to hidden locking clips around the inside edge of the phone. Not to worry; just move in one consistent direction around the phone as opposed to jumping from spot to spot!
- Top to bottom, left to right, clockwise or counter clockwise, once we make it about half way around the device, the panel is easily removable by hand.

⚠ It is of utmost importance that you do not attempt to free the battery from the device at this point without proceeding to the following step! This is an *integrated* battery that can easily be damaged or destroyed if the proper steps are are not taken.

Step 2



- Using a pair of tweezers, remove the plastic plugs.
- Once the hidden screws are revealed, use a PH #00 screwdriver to remove the three 3.175mm screws.
- Use the PH #00 screwdriver to remove the remaining six 3.175 screws.

Step 3



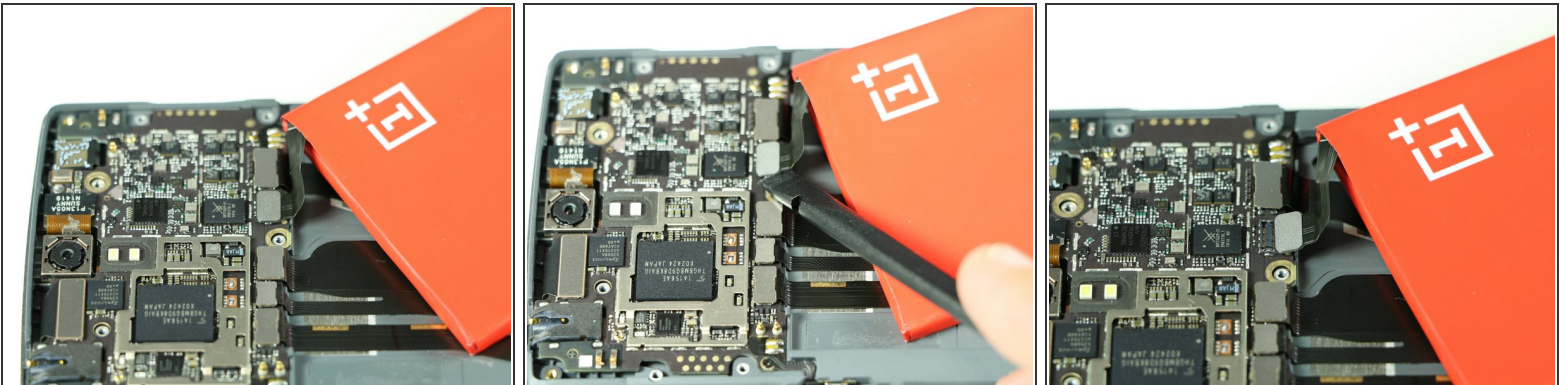
- Using a plastic opening tool, gently pry up the black plastic cover and remove it from the device.

Step 4



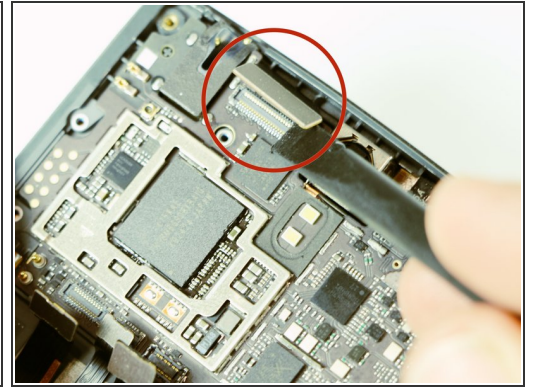
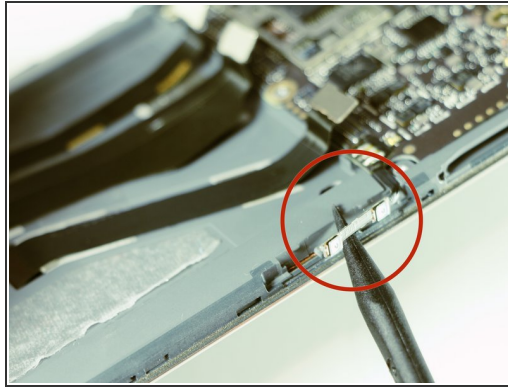
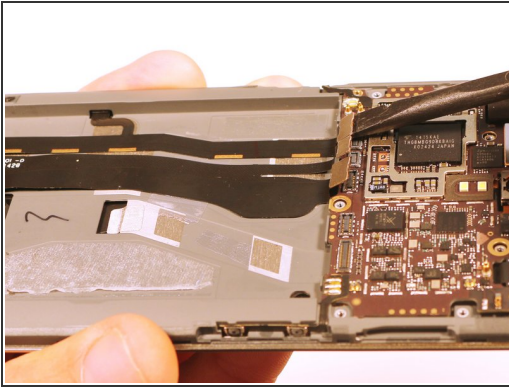
- After we have removed the motherboard cover, we notice that the battery is intact and has a black ribbon attached to it, which is mounted on the logic board.
 - Using the spudger, carefully begin to lift the the battery up from the side opposite the ribbon. Be aware that there is high-grade adhesive holding the battery in its bay, so proceed with caution.
- ⚠ This battery is not encased in a hard shell so it is soft and malleable. Caution must be taken during removal so as not to cause permanent damage.

Step 5



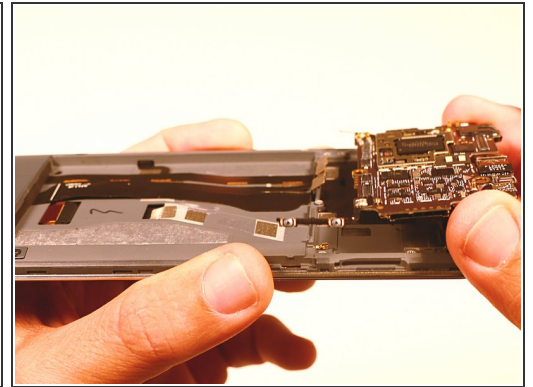
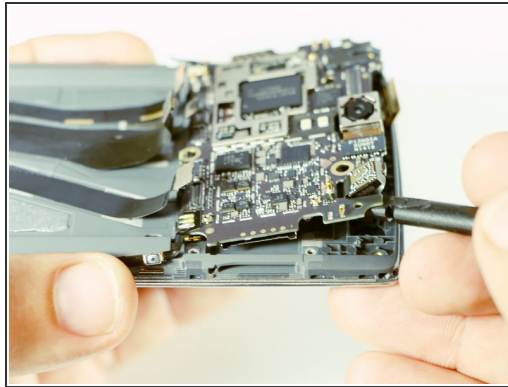
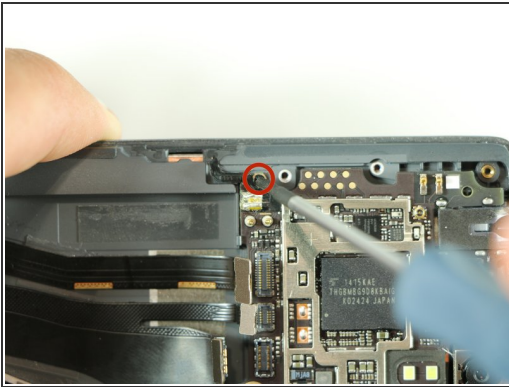
- Once the battery has been freed, we use the ever handy black spudger to pry up and free the battery ribbon from its dock.
- i** You can disconnect the battery before freeing it to make removal easier.

Step 6 — Removal of Ribbons



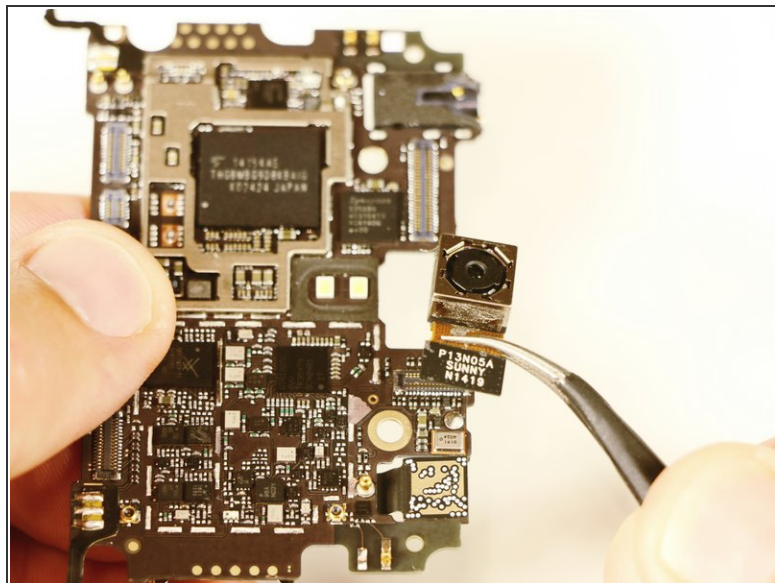
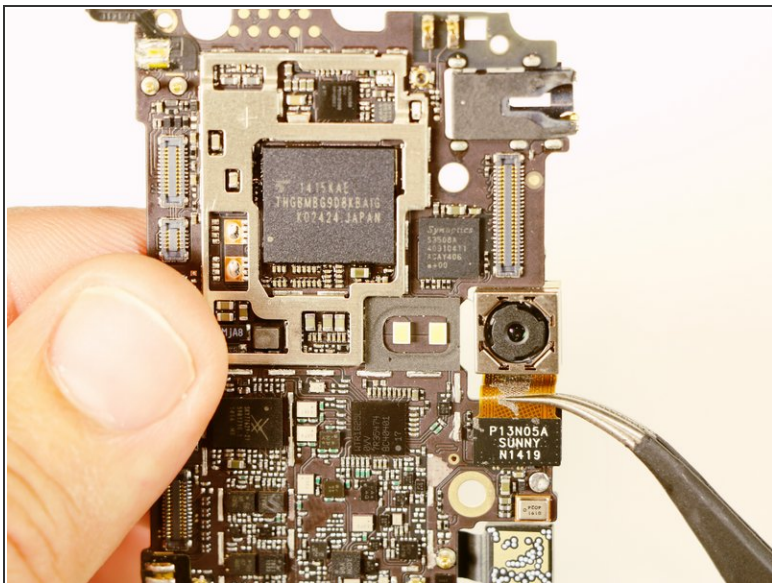
- After the battery has been removed, use the spudger to disconnect the remaining ribbons.
- Notice that there are two side ribbons, one on each side (volume up/down and power), and a top ribbon as well as those from the battery compartment.

Step 7 — Removal of Motherboard



- After removal of the ribbons, there is one final screw. Once you have removed this, the motherboard easily pries out with spudger.
- This is the only screw that differs in size. This screw is a philips 00, 3.00 mm. in length.

Step 8 — Removal of Rear Facing Camera



- Once the motherboard has been removed simply pry off the rear facing camera with a spudger or angled tweezers.

To reassemble your device, follow these instructions in reverse order.