



# OnePlus X Back Rear Panel Replacement

Replace the glass rear panel of the OnePlus X.

Written By: Natali Monge



## INTRODUCTION

As great as the OnePlus X is, it is not indestructible. If a heartbreaking (or glass-breaking) fall occurs, use this guide to remove the rear panel.



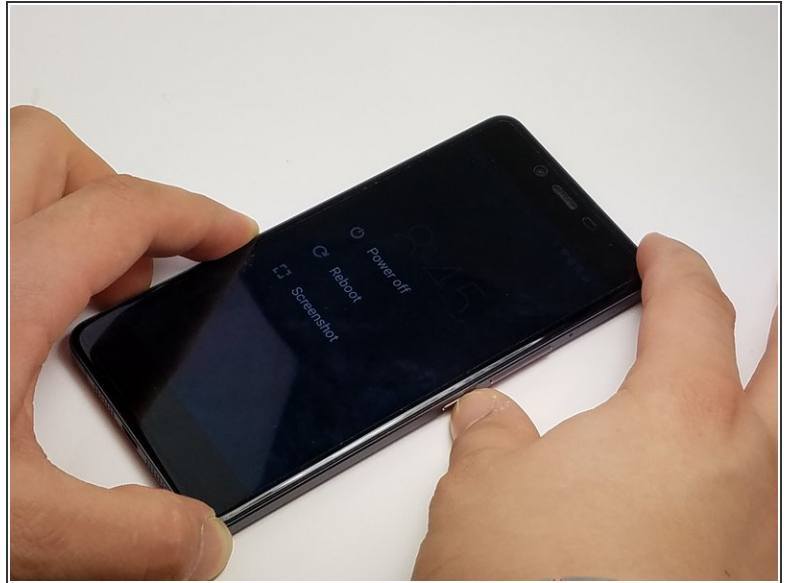
### TOOLS:

- [Jimmy](#) (1)
- [iFixit Opening Picks set of 6](#) (1)
- [Suction Handle](#) (1)
- [Heat Gun](#) (1)

HT100 Heat Tool

---

## Step 1 — Rear Panel



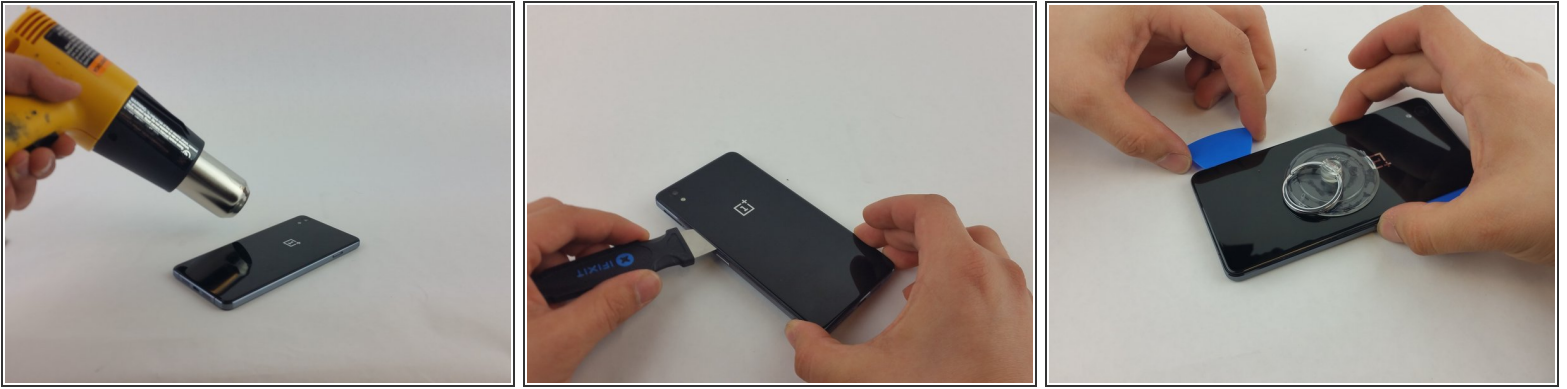
- Power off the device with the Power Button, located on the right hand side of the phone (smaller button).
- Hold the button down for a few seconds, until the option "Power Off" appears.
- Tap "Power Off" on the screen to power down the phone.

## Step 2



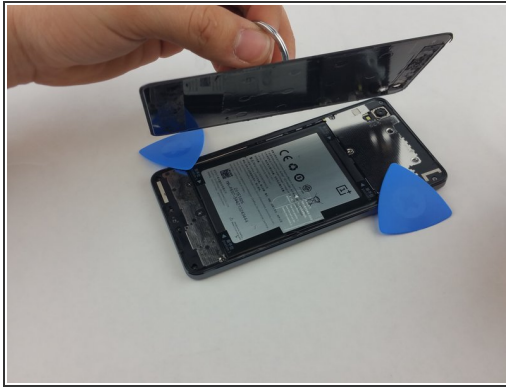
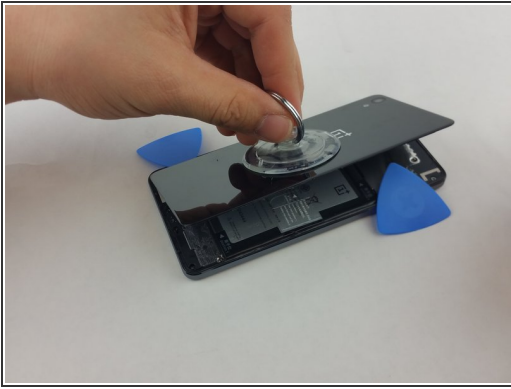
- Insert a SIM card removal tool into the small hole on the top right corner of the phone, above the volume buttons.
  - ❗ If you do not have the original packaging or a SIM card removal tool, use a straightened paperclip.
- Push the tool into the hole. The tray should pop out.
- Remove the tray from the phone.

## Step 3



- ⚠ Put on heat-resistant gloves and place the phone on a surface that will not catch fire or melt.
  - Using a heat gun, slowly and evenly heat the edges of the rear panel.
- ⚠ **Do not linger too long on one spot.** The heat gun can damage the device if left on one section for a long period of time.
  - While heating the rear panel, use a Jimmy to test if the adhesive is soft enough to allow the panel to separate from the device.
  - Carefully detach the rear panel, using opening picks to hold the panel apart from the device.
  - Once most of the edges are separated from the device, attach a suction cup to the panel.

## Step 4



- Press the suction cup to the rear panel to secure it.
- With the help of the suction cup, pull up on the panel to completely detach it from the device.
- ⓘ Use the suction cup to safely remove the panel from the device. As you work around the panel's edges, the lingering heat may cause the remaining adhesive to reattach the panel to the device.