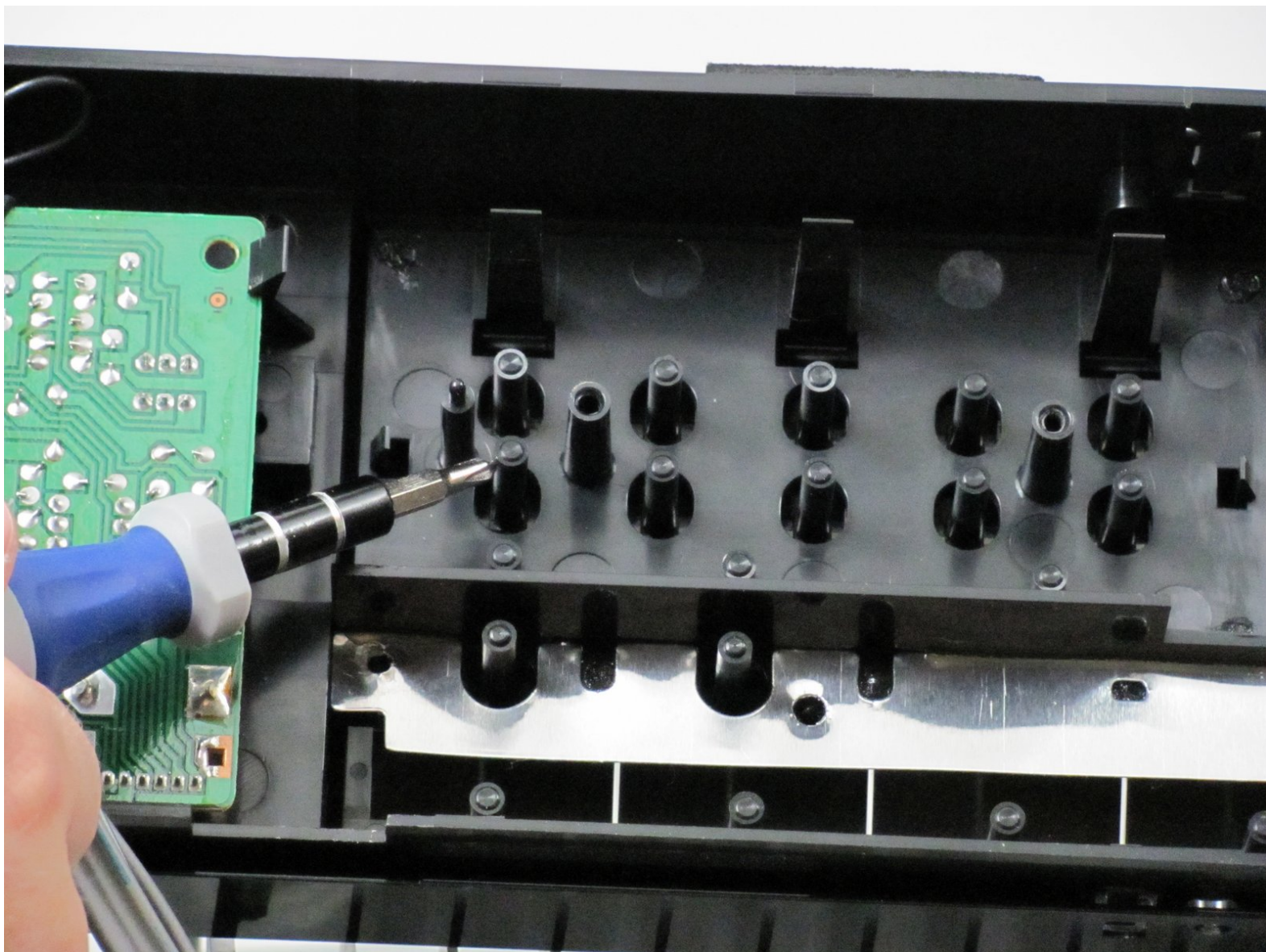




Onkyo TX-800 Button Pins Repair

Use this guide to fix the button pins of your Onkyo TX-800 if they are crooked.

Written By: Ryan



INTRODUCTION

Use this guide to fix the button pins of your Onkyo TX-800 if they are crooked.



TOOLS:

- [Phillips #0 Screwdriver](#) (1)
 - [Large Needle Nose Pliers](#) (1)
-

Step 1 — Top case



- Remove the two screws on both sides of the receiver. Keep these and the rest of the screws in a safe place.

Step 2



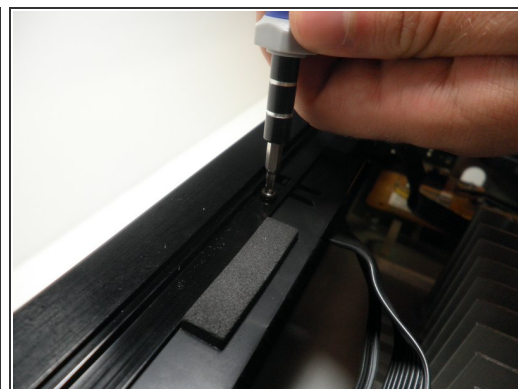
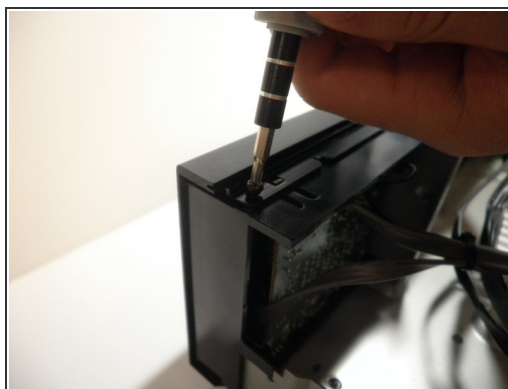
- Remove the top screw on the back panel.

Step 3



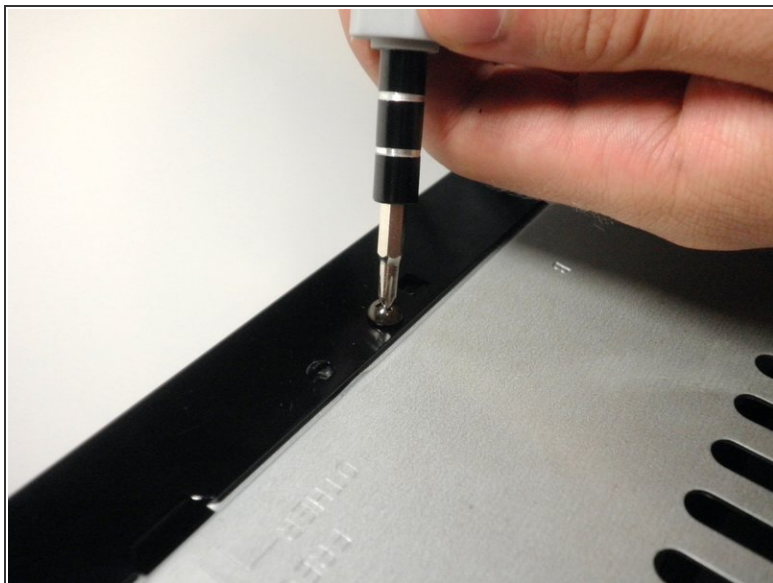
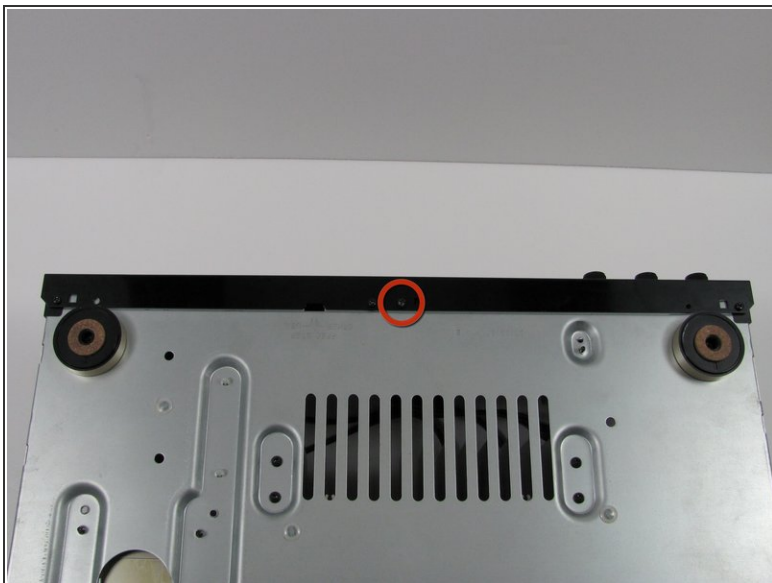
- Slide off the case to expose the internal components of the receiver.

Step 4 — Face plate



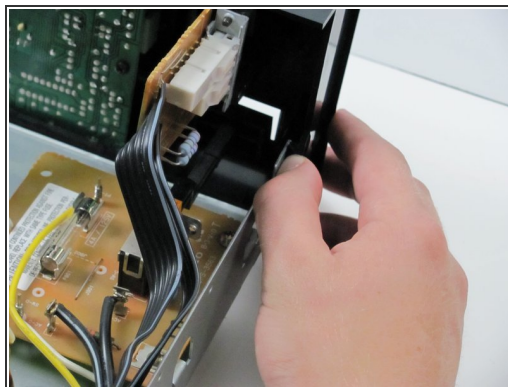
- Unscrew the three screws on top of the face plate.

Step 5



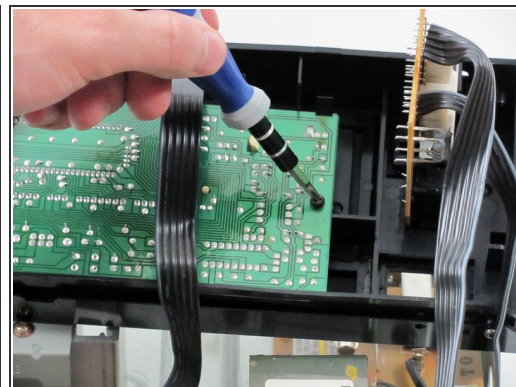
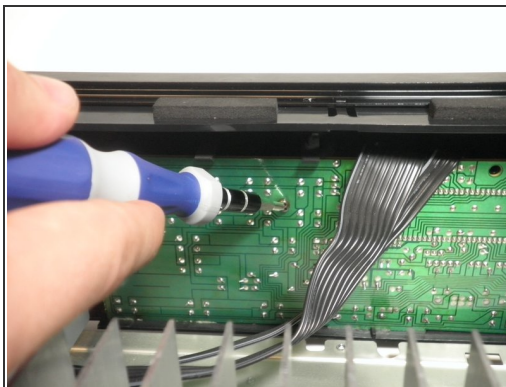
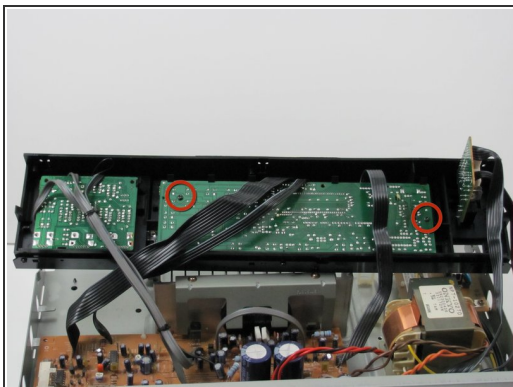
- Unscrew the one screw on the bottom of the front panel.

Step 6



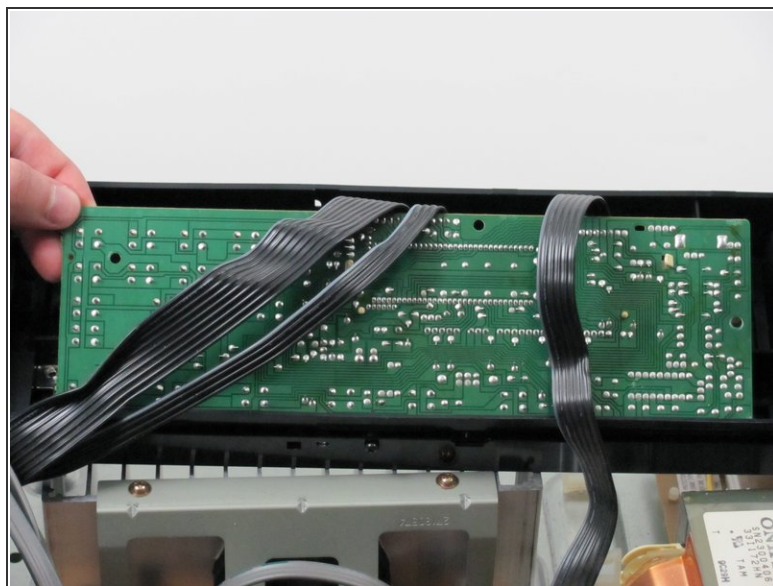
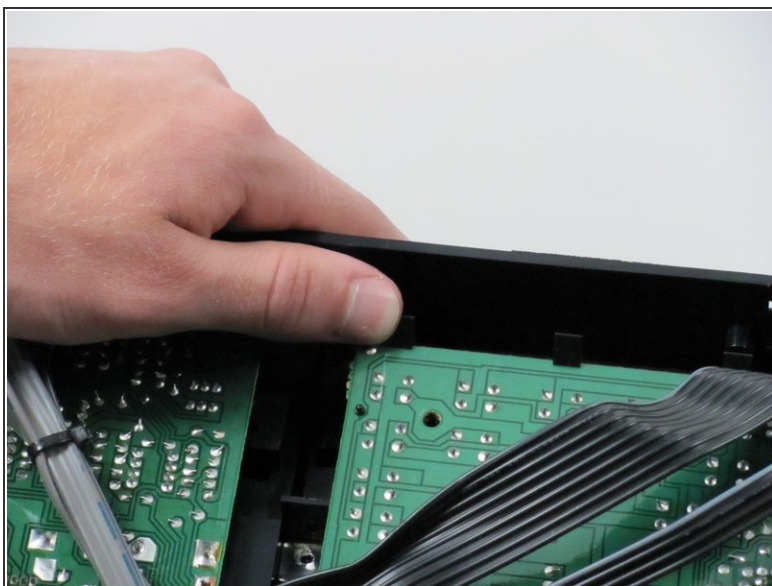
- Simultaneously push down on the head of the snap on each end of the device with your thumbs and push to separate the face plate. This may take some force.

Step 7 — Logic board



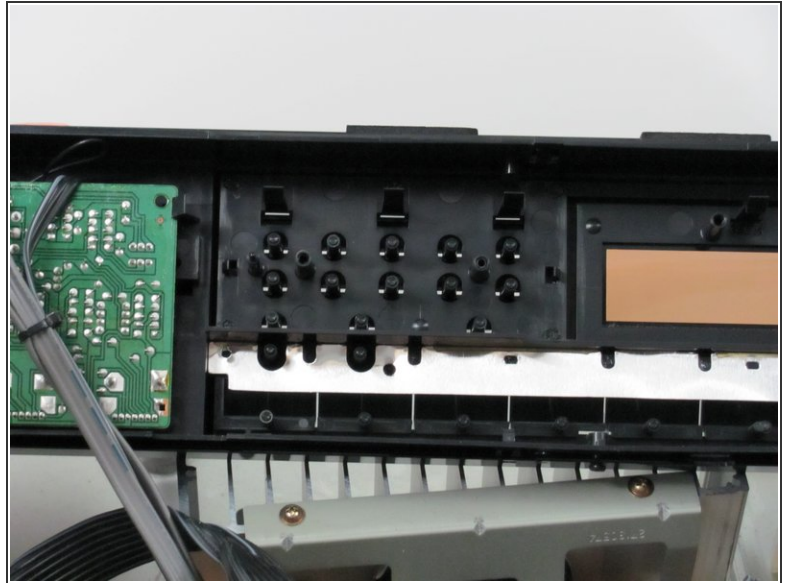
- On the inside middle of the face plate you will see two screws in the logic board. Unscrew these two screws.

Step 8



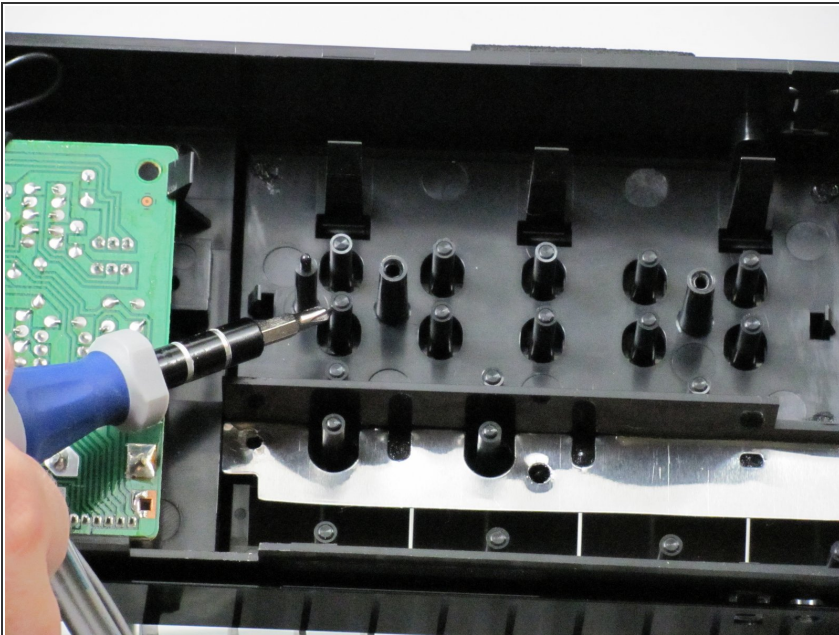
- You will see the same snaps along the top of the logic board. Press the heads of the snaps down and pull the logic board out and up.

Step 9 — Onkyo TX-800 Button Pins Repair



- You will see that each button on the face plate has a button pin that presses the corresponding button on the logic board. Visually check if any of these pins are bent or broken.

Step 10



- If any of the pins are bent use your pliers to bend the pins back into shape.
- ⚠ Take caution that too much force can break the button pins.

To reassemble your device, follow these instructions in reverse order.

This document was generated on 2020-03-29 06:07:11 PM (MST).

