



Opening a bObi Robotic Vacuum

A guide to opening up bObsweep and accessing internal parts such as: main circuit board, ground sensors, wall sensors, side brush motor, UV lamp, power switch, touch sensors, and wheels.

Written By: Chelsea



INTRODUCTION

A guide to opening up bObsweep and accessing internal parts such as: main circuit board, ground sensors, wall sensors, side brush motor, UV lamp, power switch, touch sensors, and wheels.

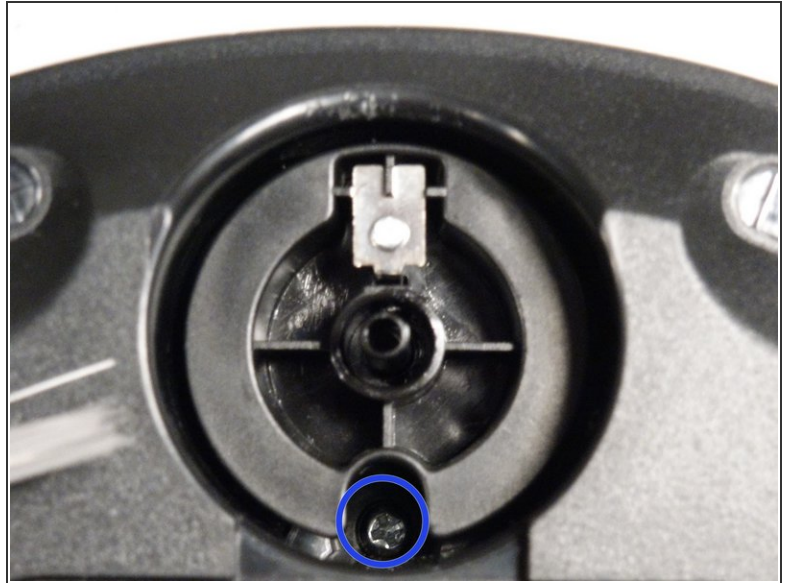
To reassemble bObi, refer to the closing guide. [Closing bObi's Cover Post-Repair](#)



TOOLS:

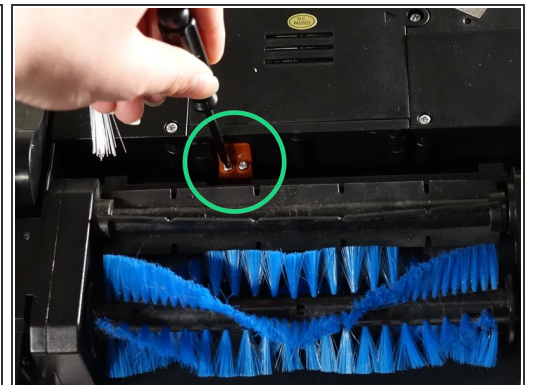
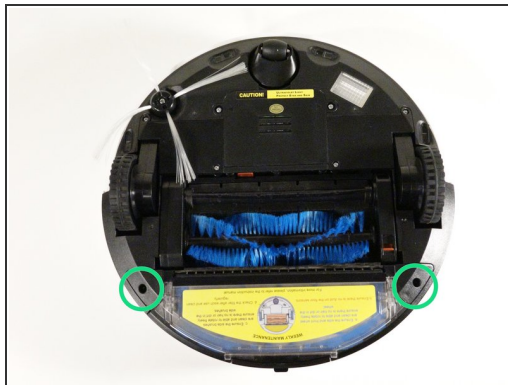
- [Phillips #2 Screwdriver](#) (1)
-

Step 1 — Top Cover



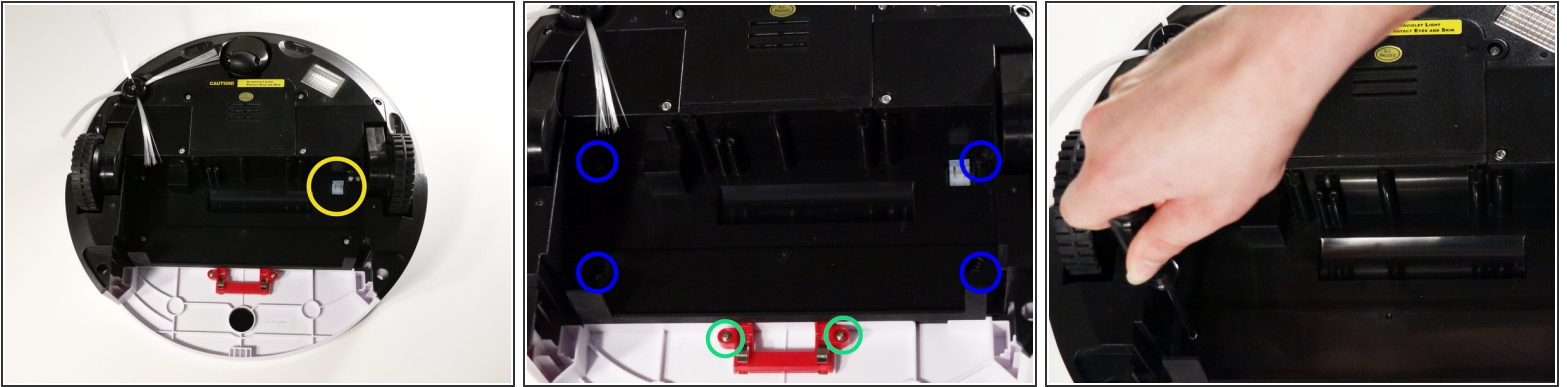
- Remove bObi's front wheel to access one of the screws holding bObi together.
- i* Make sure the wheel is turned closer to bObi's front touch sensors. Use your screwdriver for leverage, and the wheel will pop up and out.
- Uninstall the larger screw that sits deeper in the wheel compartment.

Step 2



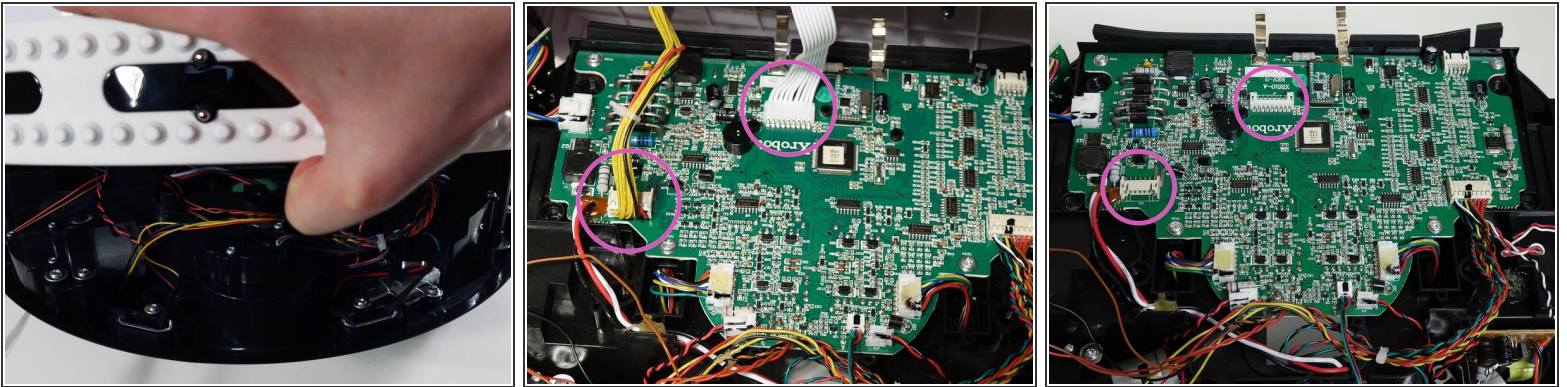
- Remove bObi's dustbin.
- Uninstall the 2 screws close to the bin and 2 smaller screws above her main brushes.

Step 3



- Lift the brush holder. To detach completely, unplug it from bObi.
- Remove the two screws on the dustbin contact point holder inside bObi.
- There are 4 screws beneath the main brushes. Uninstall these, and open bObi up to expose her main circuit board.

Step 4



- Detach the two circuit plugs connecting bObi's cover to the main board and the cover will be completely removed.

To reassemble bObi, refer to the closing guide. [Closing bObi's Cover Post-Repair](#)