



# Opening the Jura Z7 Housing

Opening Jura Impressa Z7 housing

Written By: VauWeh



---

## INTRODUCTION

This will show how to disassemble the case for the Jura Z7. this will be necessary for most repairs on this



### TOOLS:

- [T10 Torx Screwdriver](#) (1)
  - [Oval Drive Bit](#) (1)
  - [iFixit Opening Tools](#) (1)
-

## Step 1 — Opening the Jura Z7 Housing




 Unplug the Z7 from the power outlet

- Remove all attachments like water tank, drip tray, coffee bean cover.

## Step 2



- Turn the machine so the back is facing toward the front.
- The Jura sign must be removed. Turn it a few millimeters in a clockwise direction.
-  If this becomes difficult use a suction cup to assist
- Remove the Jura sign

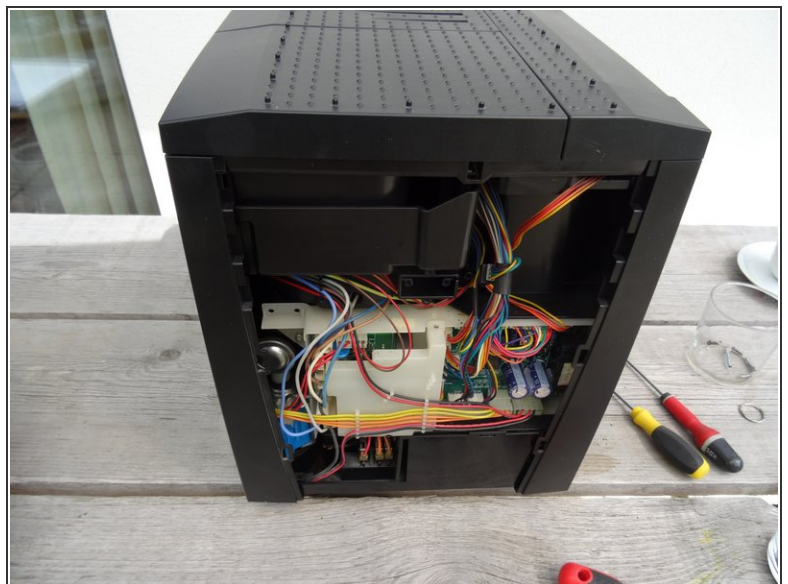


### Step 3



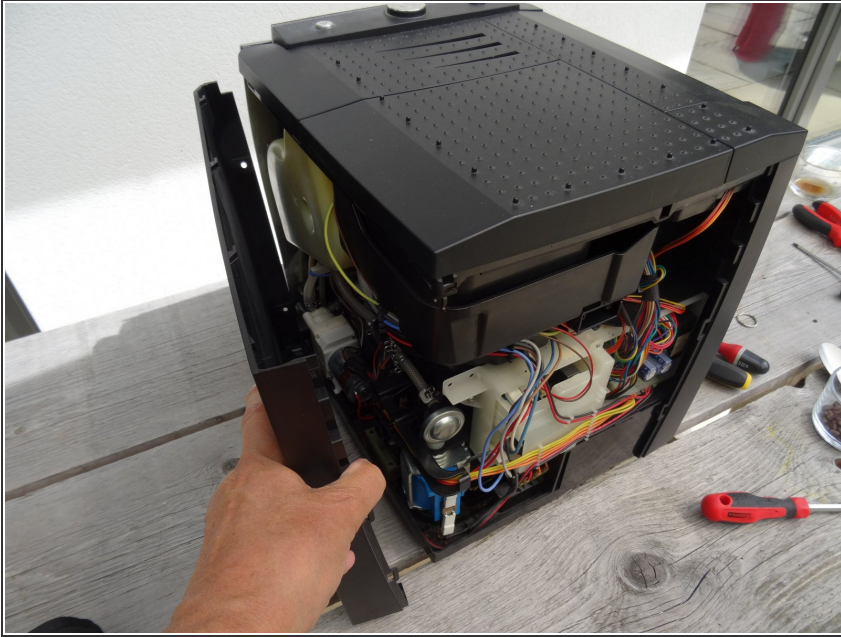
- Behind the Jura sign are two screws with an oval head. They have to be removed.
- These screws have an oval head that makes them look like rivets (picture 2). You need to use a special key or bit for their removal. If necessary, it could be done with a synonymous with a pair of needle nose pliers. Jura wants to keep us out of our own machines!!!!

### Step 4



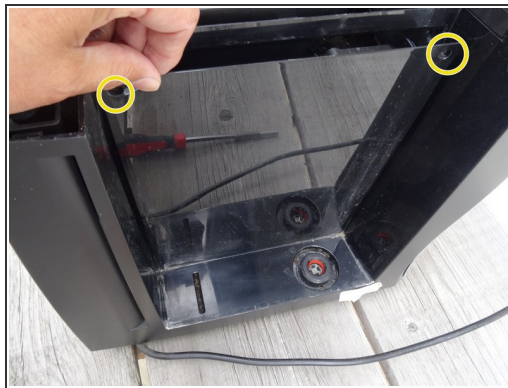
- Push the back down a bit and then remove it.

## Step 5



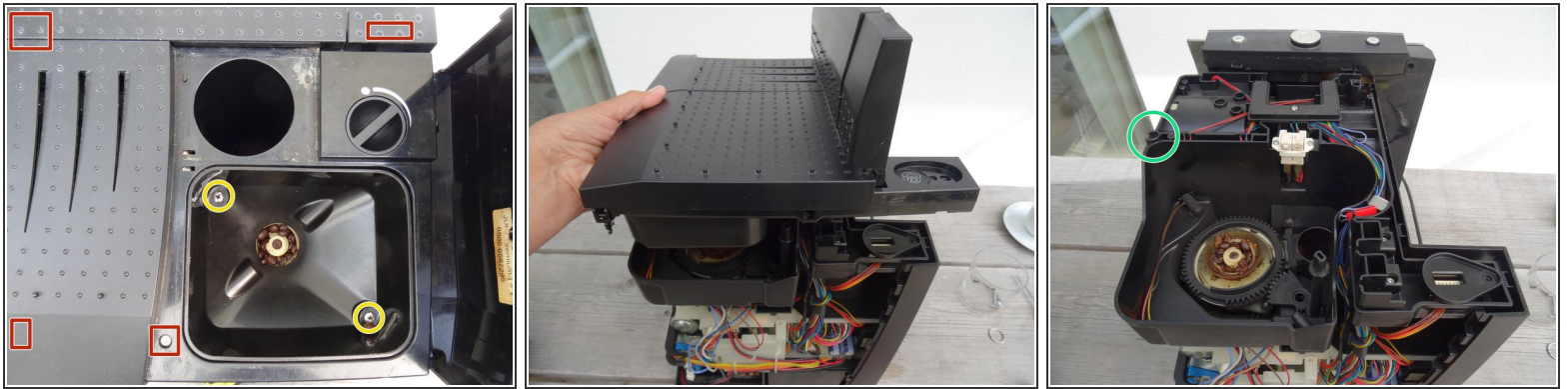
- Pull the right side panel backwards and take it off.
- ⓘ Sometimes it gets a bit stuck and may require a bit more of a pull.

## Step 6



- ⓘ In this step, you should remove the screws of the right side panel. The side panel itself can only be removed after removing the top cover.
- Remove the Torx T10 screw on the front wall of the side panel.
- In the side part there is a lid over the brew group. The lid is fastened at the top with two oval head screws. Remove those to remove the lid.
- With the cover removed the brew group becomes visible

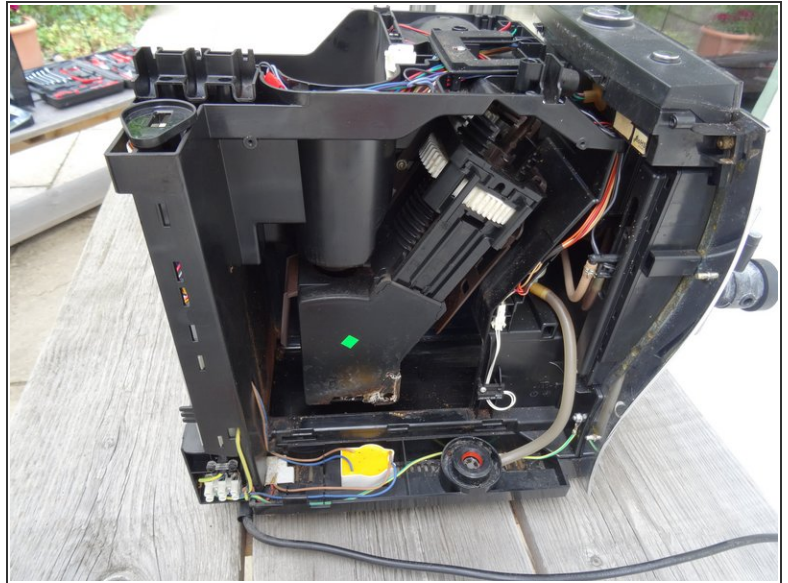
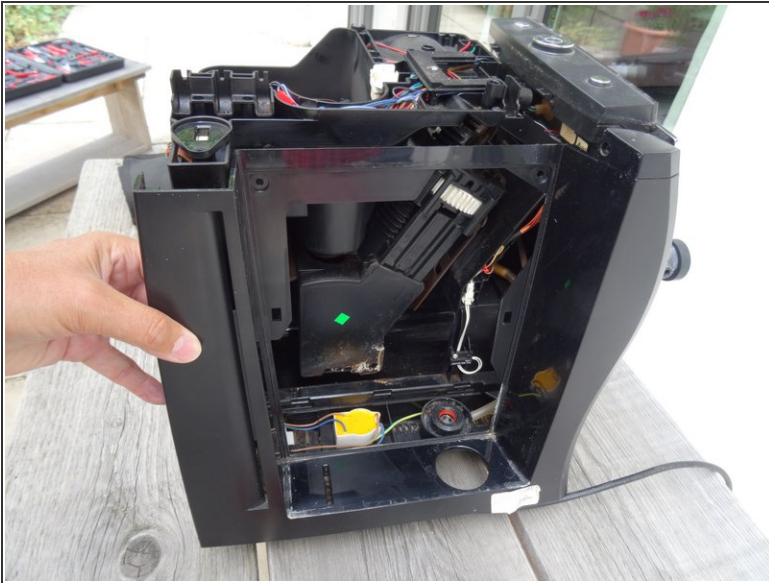
## Step 7



- This step shows how to remove the top cover
  - Remove the powder tray and all coffee beans.
  - The cover is fastened with four Torx T10 screws. Those are easily found under the covers as well as the small cover on the left back side.
  - Also, remove the two Phillips screws on the bean container and remove the bean container.
  - Lift the cover upwards.
  - ⓘ If it is stuck, carefully pry with a plastic opening tool.
- ⚠ The lid of the bean container is held in place by a small strong magnet that loosely rests. It is either in the green marked depression, or it remains hanging on the bean container. Make sure it is not lost!



## Step 8



- Pull the left side panel backwards to take it off.

Repeat the steps in reverse order to reassemble your device.