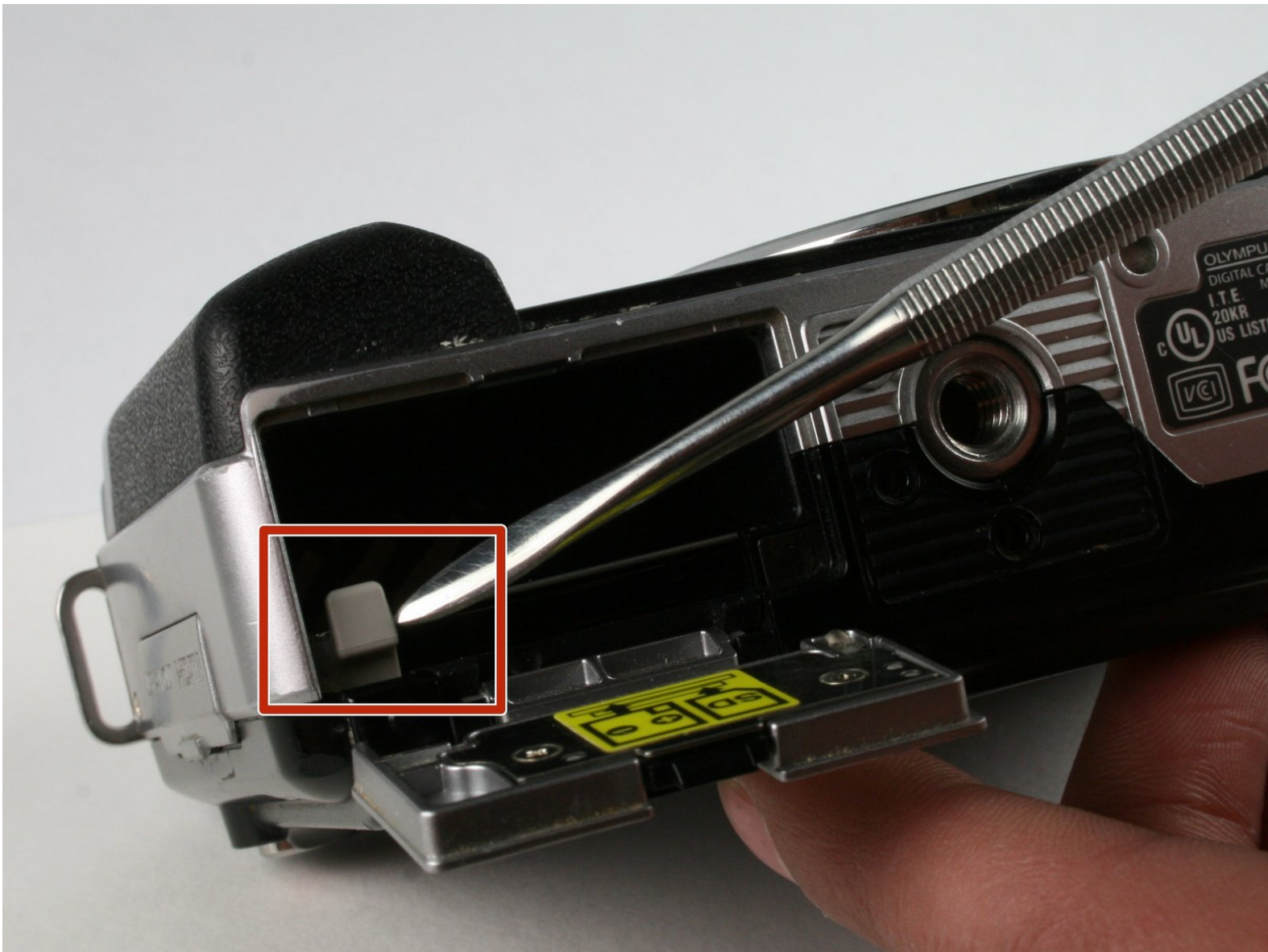




Opening the Olympus E-PL1 Case

This guide will show you how to open the case of your E-PL1 so that you may be able to understand the basic outline of your camera.

Written By: Jeffery Smith



INTRODUCTION

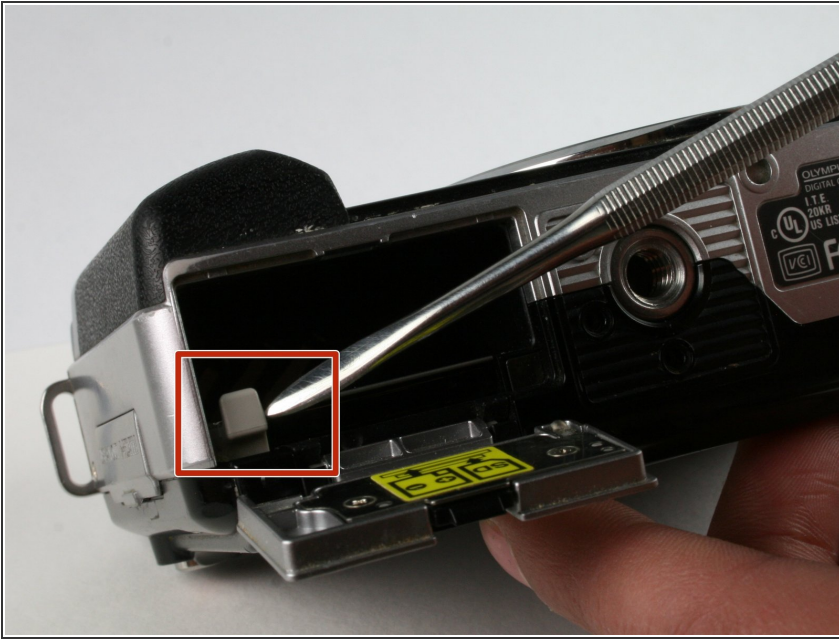
In this guide, you will learn how to open the case of your camera safely. After the successful completion of this guide, you will be able to move on to the other guides.



TOOLS:

- [Phillips #000 Screwdriver](#) (1)
 - [Tweezers](#) (1)
 - [Spudger](#) (1)
-

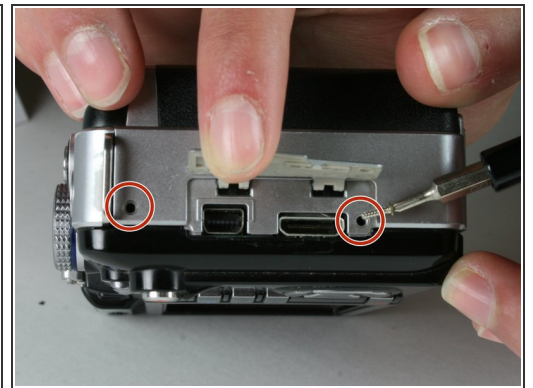
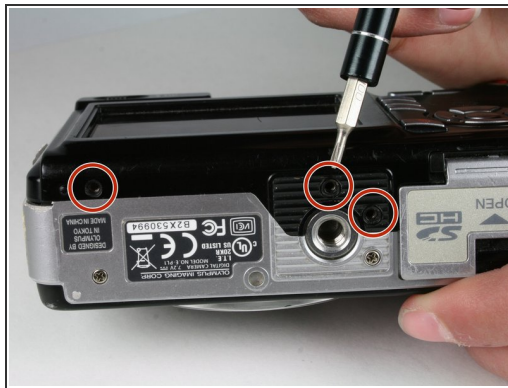
Step 1 — Opening The Case



- Push the gray tab down, using a spudger if necessary, and the battery will come out.

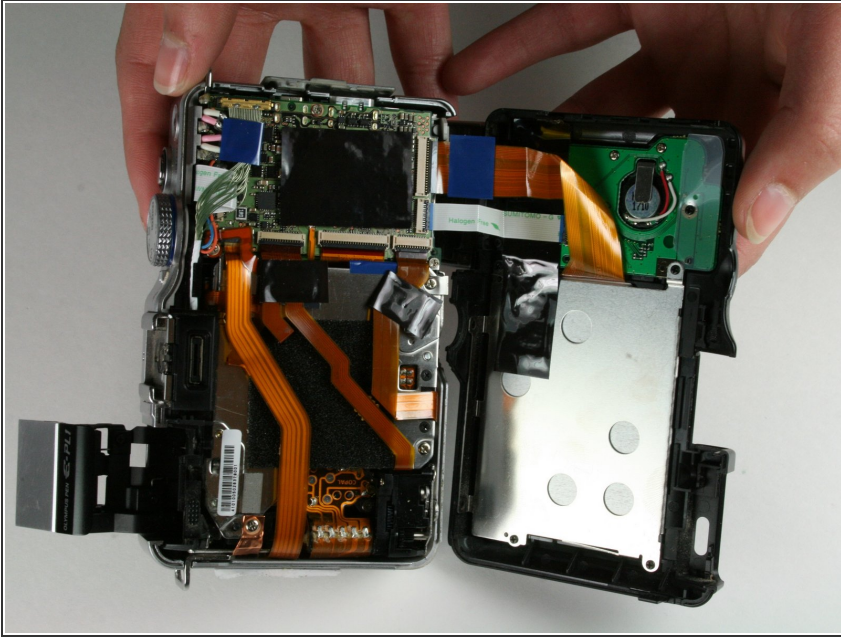
⚠ Failure to remove the battery prior to disassembly can result in harm.

Step 2



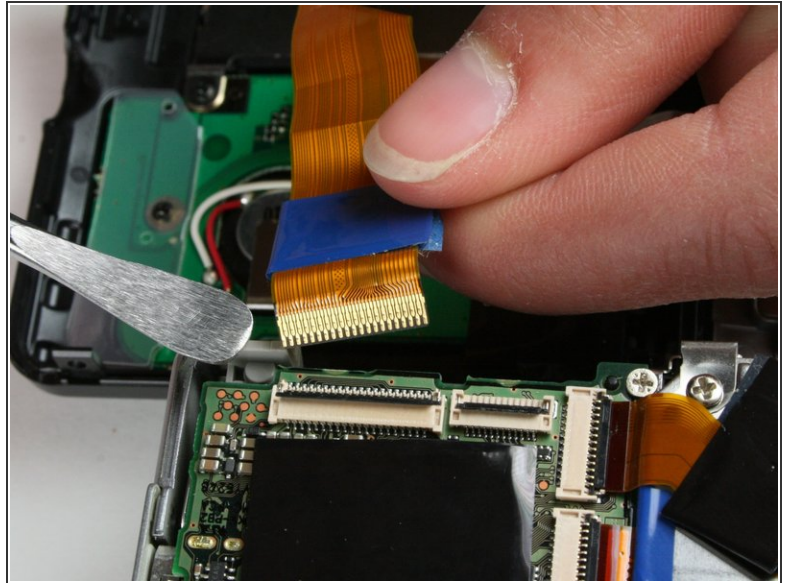
- There are a total of six screws that must be removed using the the #000 Philips screwdriver.
- As per picture one: there is one 4.9 mm Philips head screw on the left side of the camera.
- As per picture two: on the bottom of the camera, there are three 3.4 mm Philips head screws; these are located on the darker area of the case.
- As per picture three: there are two 5.3 mm Philips head screws on the right side, one is beneath the USB cover.

Step 3



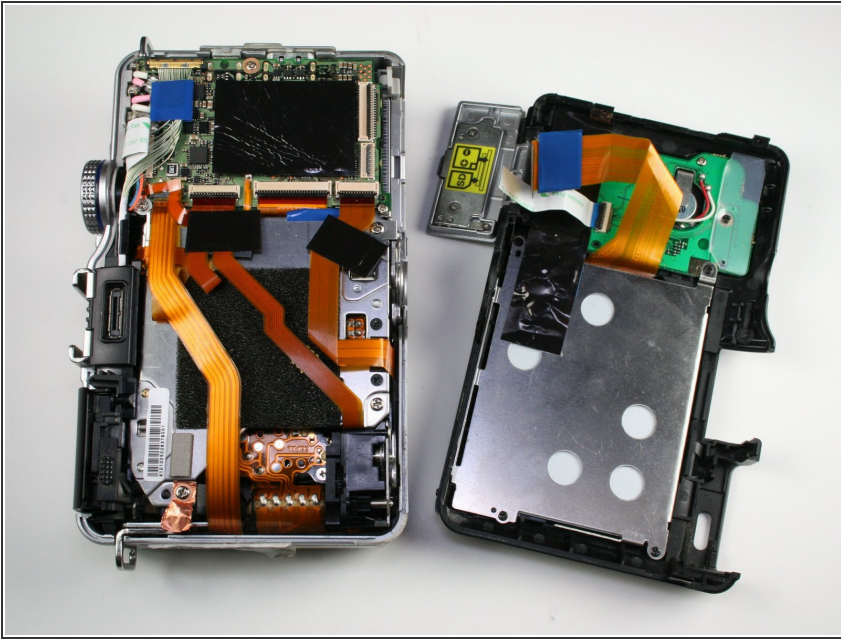
- Open the case by peeling off the back panel.
- ⚠ Pull the case apart gently so that the ribbon connector will not tear.

Step 4



- Disconnect the two ribbon cables as shown in picture one.
- ⚠ Avoid using metal pry tools, as shown in the photo, on internal electronic components, as it can cause a short and damage the device. Use an ESD-safe tool such as a standard nylon spudger.
- ℹ To disconnect a ribbon cable, use a spudger to lift the black tab then pull the ribbon out. This works the same for all ribbon cables.

Step 5



- The back panel has now been removed.

To reassemble your device, follow these instructions in reverse order.