



# Opening the Siemens Surpresso Compact

Opening a Siemens Surpresso compact coffee machine.

Written By: VauWeh



# INTRODUCTION

For almost any repair the device will need to be opened first. The opening procedure is described in this guide.


---


## TOOLS:

- [T10 Torx Screwdriver](#) (1)
  - [1.5mm Flat Screwdriver](#) (1)
-

## Step 1 — Opening the Siemens Surpresso Compact



 **Unplug your coffee maker!**

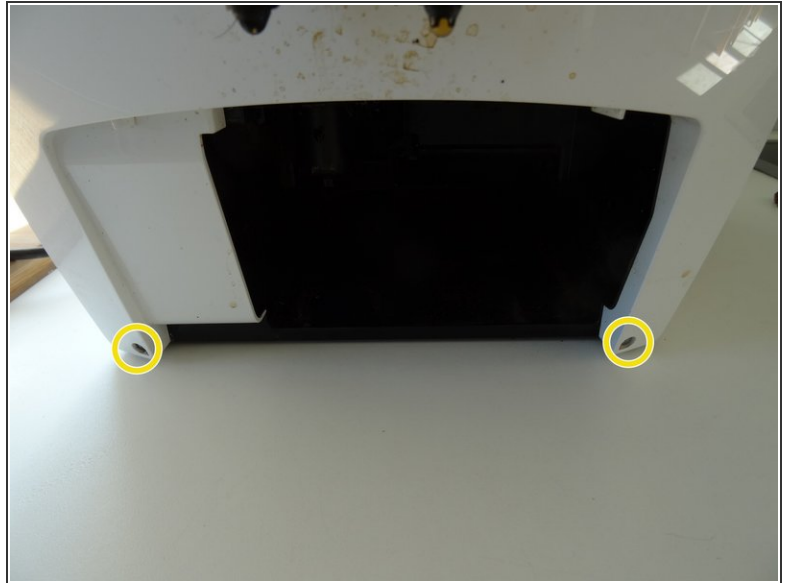
- Remove the water container, the brew group and the drip tray with pomace container.
- Using a spoon, remove as much of the coffee beans as possible from the coffee bean container.
-  Depending on the model, additional sensors with cables may be installed on the top and side panels. You have to remove these before you can completely remove the housing parts.

## Step 2



- Remove the two Torx T10 screws on the top.

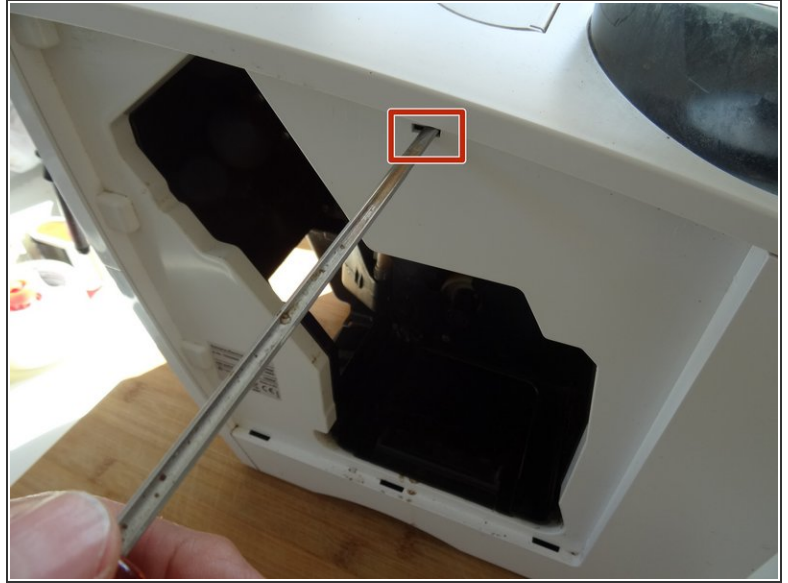
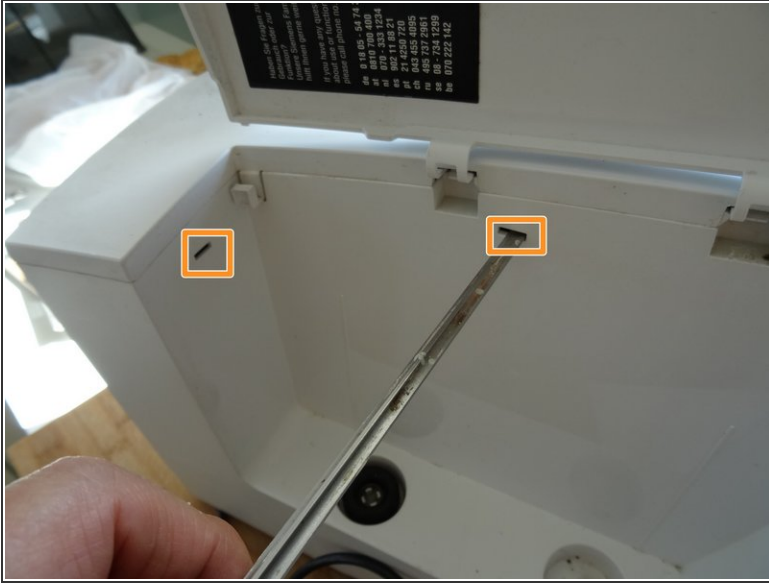
### Step 3



- Remove seven T10 Torx screws on the back.
- The two screws at the bottom of the front can remain.



## Step 4



- Press with a flat-head screwdriver into the openings on the side with the water tank. This releases the latches on the top.
- Press the flat-head screwdriver into the opening on the side with the brew group. This will release the last notch on the top.
- Lift the top off.
- On some models, a cable leads to the sensor on the powder tray. Unplug the connector on this cable first.

## Step 5



- Slide the side section of the brewing unit about 2 cm to the rear. This sometimes gets stuck and may require some force to remove.
- Remove the two tabs from the power switch.
- Take off the side panel with the brew group.

## Step 6



- Do the same with the panel on the other side.
- To remove the water tank hose simply pull it of the pump.
- Remove the side panel.

To reassemble your device, follow the steps in reverse order.