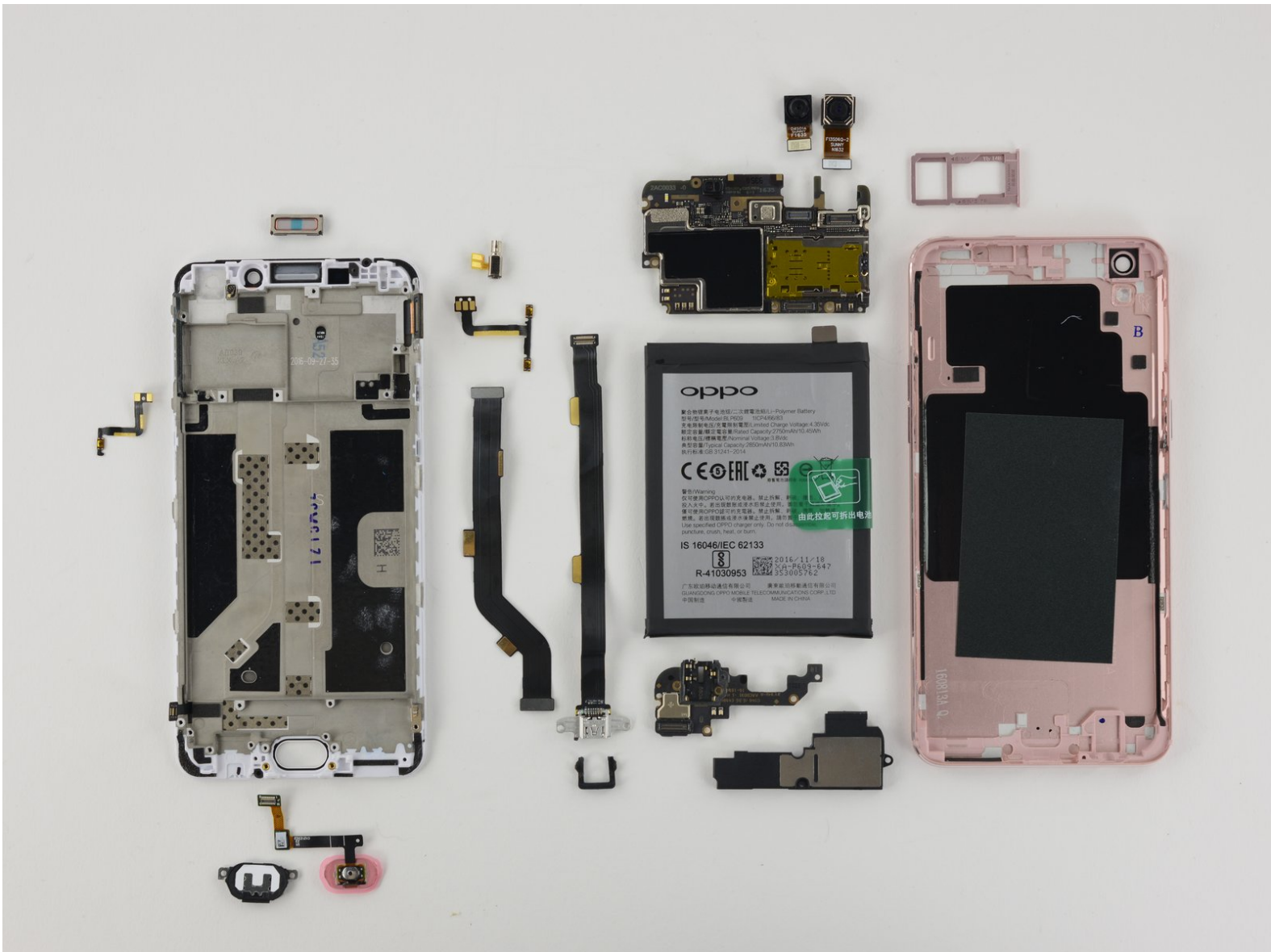




Written By: Sam Goldheart



INTRODUCTION

The Oppo R9m walks like an iPhone, looks different inside, but scores like an iPhone, too.

TOOLS:

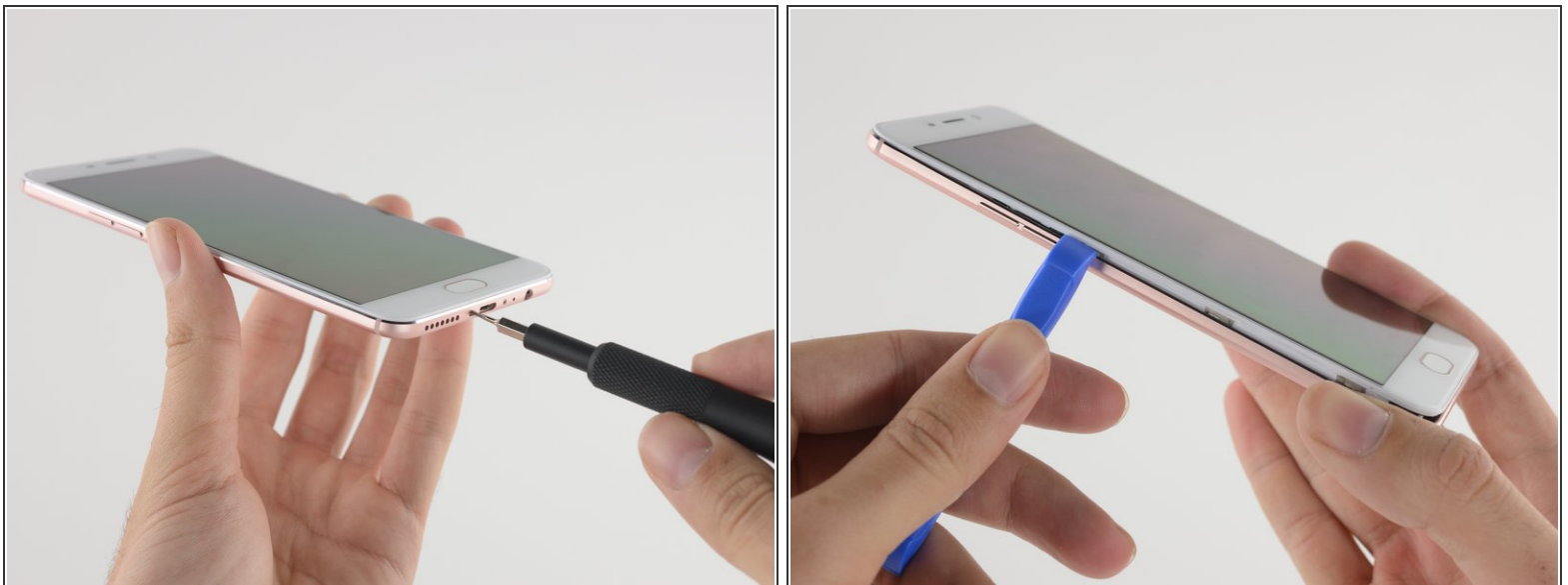
- [iFixit Opening Tool](#) (1)
 - [T2 Torx Screwdriver](#) (1)
 - [Spudger](#) (1)
 - [Phillips #00 Screwdriver](#) (1)
 - [Tweezers](#) (1)
-

Step 1 — Oppo R9m Repairability Assessment



- Exterior reference shots.

Step 2



- T2 Torx screws appear to secure the display, but removing them doesn't seem to make its removal any easier.
- Very strong clips secure the interior of the phone to the stiff metal rear case.

Step 3



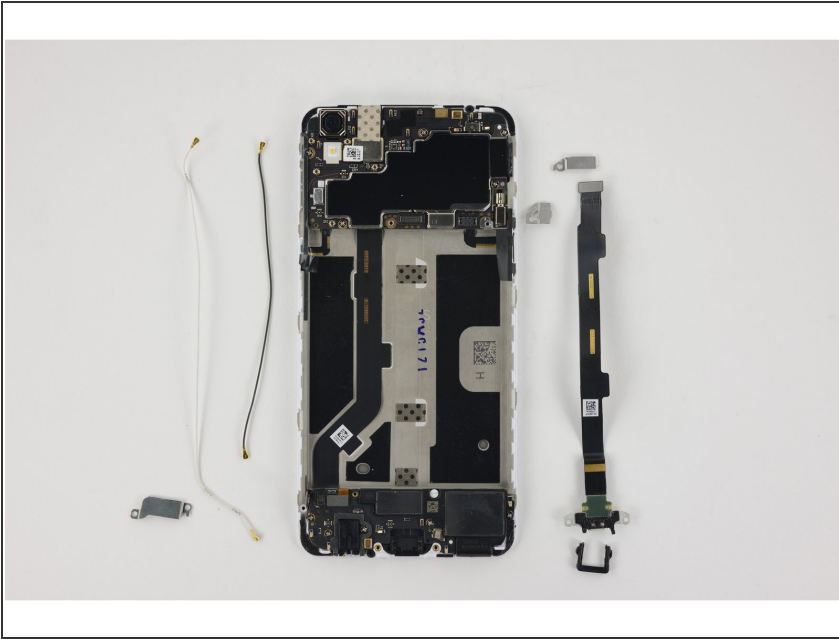
- Nothing on the rear case.
- Battery immediately accessible.

Step 4



- Battery pull tab has instructions and works well to peel the battery up. Adhesive is fairly stiff.
- Battery takes protective sheet with it, revealing interconnect cables.

Step 5



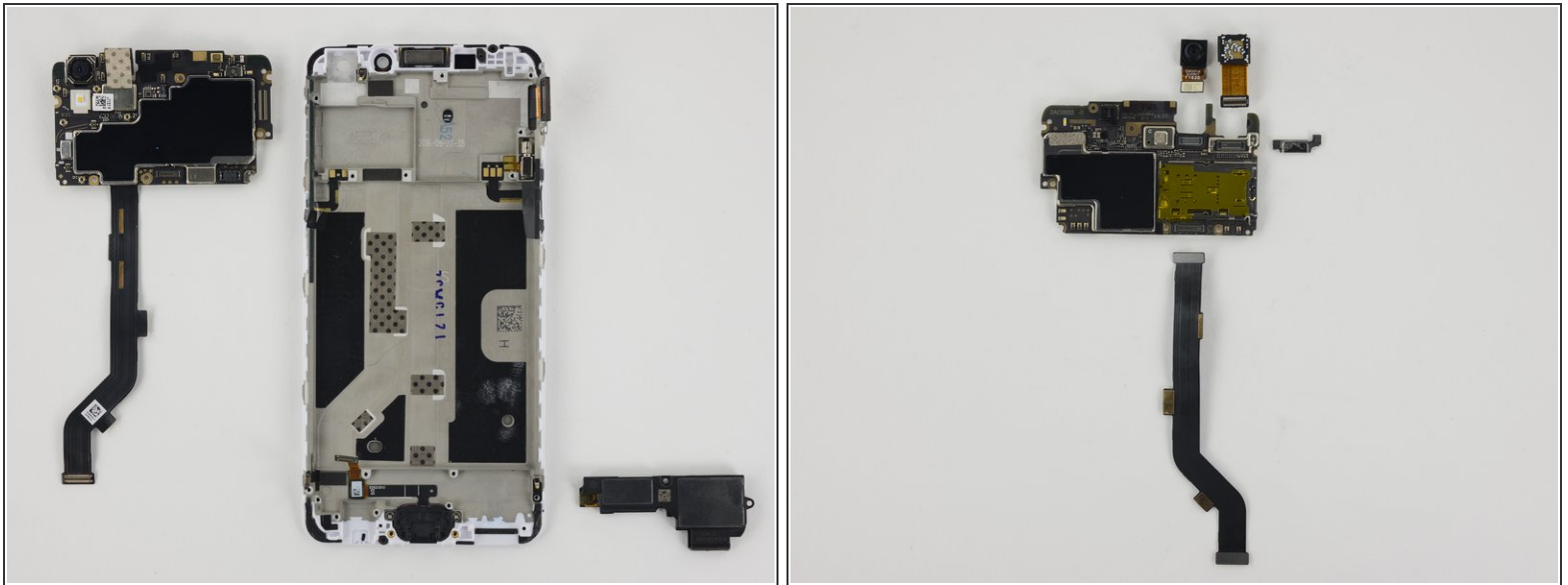
- After the battery the next available components are:
 - Antenna interconnect cables.
 - Charging port and cable, very good for repair, individual part, and easily accessible.
 - Various brackets, annoying for reassembly, but standard Phillips #00 screws are a bonus.

Step 6



- The motherboard-daughterboard interconnect cable connects to the underside of the daughterboard, which makes removing the cable or board more difficult.
- The headphone jack is soldered to the daughterboard, but the board is small and has minimal parts, so it should be an inexpensive replacement component.

Step 7



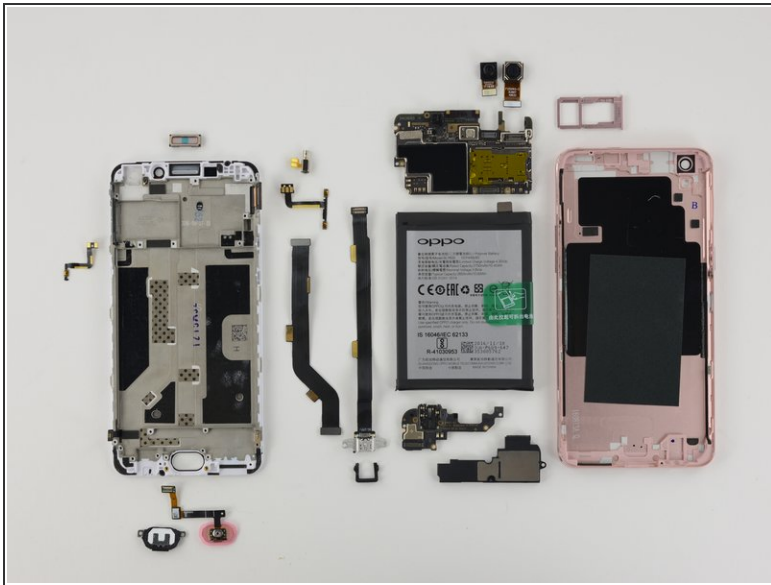
- Motherboard and speaker assembly are now removable.
- Once the motherboard is removed the following components can be removed: camera bracket, cameras, interconnect cable.

Step 8

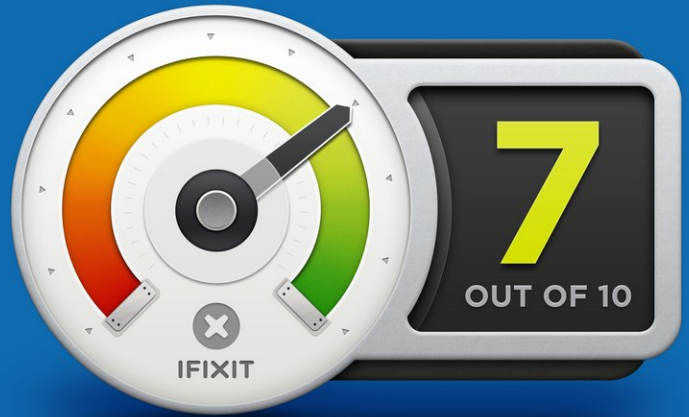


- The display assembly final components are fairly easily removed: home button bracket, home button, button cables, vibrator, earpiece speaker.
- Including the frame and fused display in the display assembly makes the part more expensive.

Step 9



REPAIRABILITY SCORE:



- The Oppo R9m earns a **7 out of 10** on our repairability scale (10 is the easiest to repair):
 - Battery is fairly easily accessible and removable.
 - Most components are extremely modular making for cheaper repairs.
 - The opening procedure is extremely tough, clips are very stiff and likely to be broken.
 - The single unit display assembly is annoying to reach, and will be a costly part.
 - Manufacturer does not provide user-accessible repair documentation.