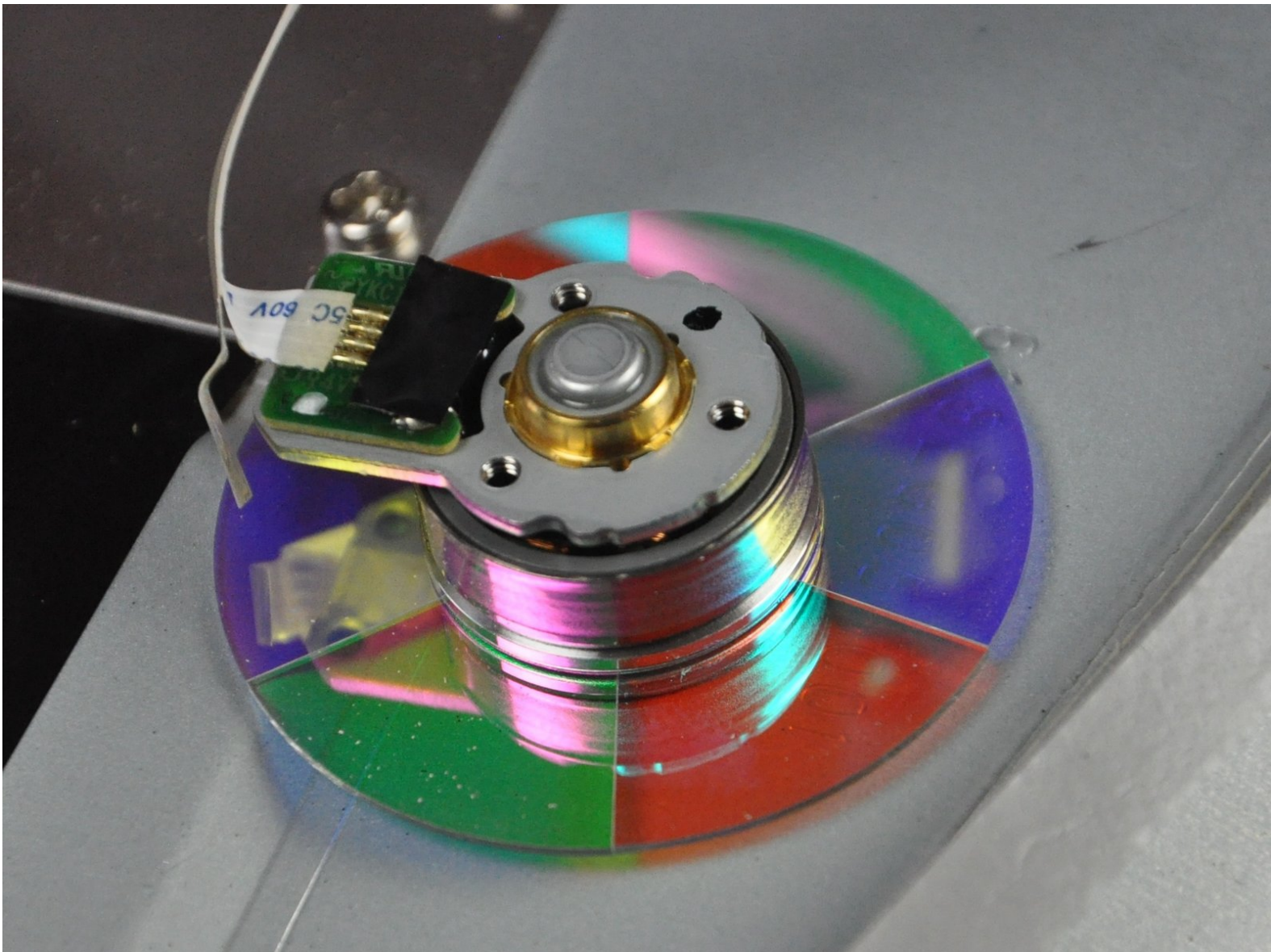




Optoma HD20 Color Wheel Replacement

Device image in black and white? Try replacing the color wheel.

Written By: Trevor



INTRODUCTION

Use this guide to remove the color wheel from your Optoma HD20.



TOOLS:

- [Phillips #1 Screwdriver](#) (1)
 - [iFixit Opening Tools](#) (1)
-

Step 1 — Disassembling Optoma HD20 Cover



- Twist the focal cap clockwise until it is fully extended.
- Remove the focal cap by pulling it straight out.

Step 2



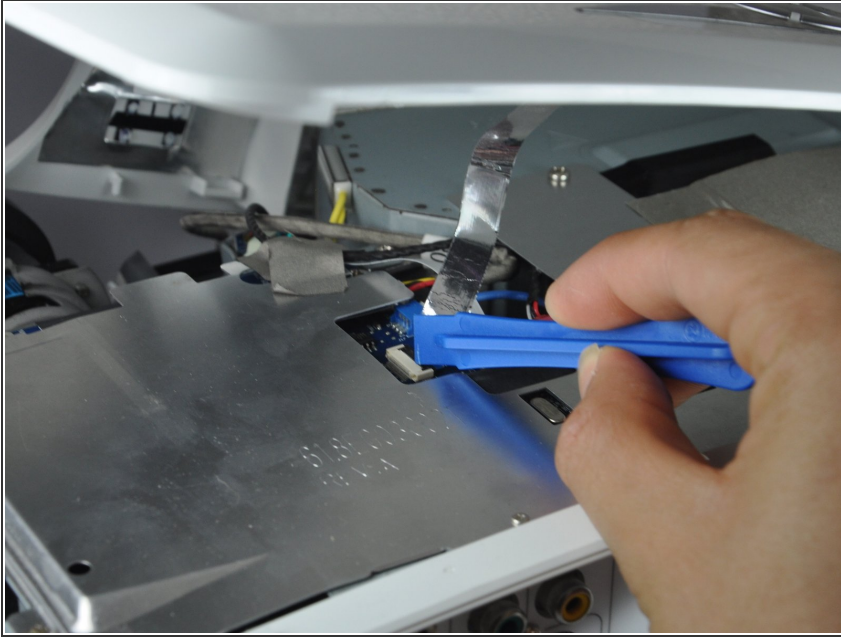
- Use a Phillips #1 screwdriver to remove the three 7.5mm screws on the bottom of the device.


Step 3



- Use a plastic opening tool to gently pry the top cover off of the device.
- ⓘ It is easier to pry off the cover from the back side just above the HDMI ports.

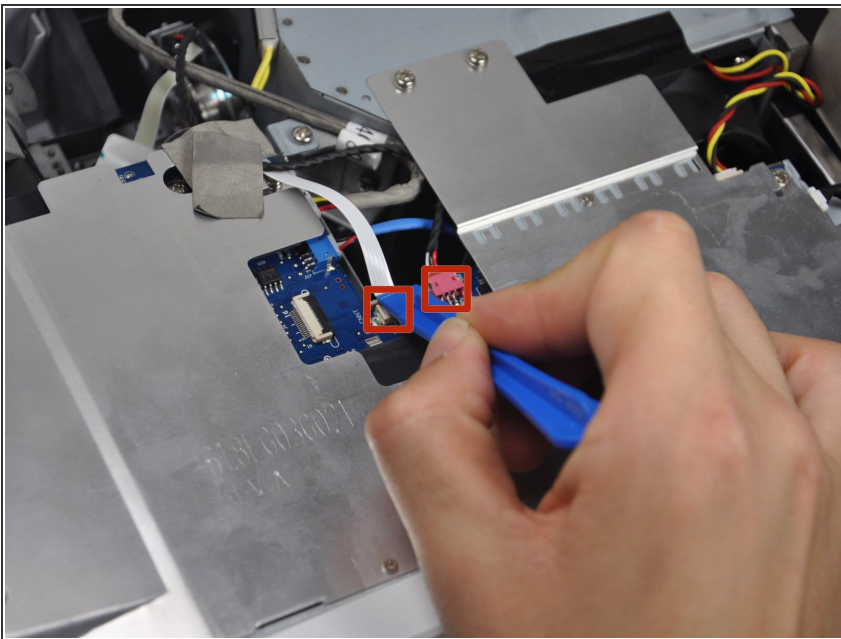
Step 4



 When removing the cover, be cautious of the ribbon connecting the top buttons to the main circuit board. The ribbon must be disconnected before proceeding.

- Remove the ribbon by disconnecting it from the main circuit board.
- Lift up the clip holding it down and pull the ribbon out.

Step 5 — Color Wheel



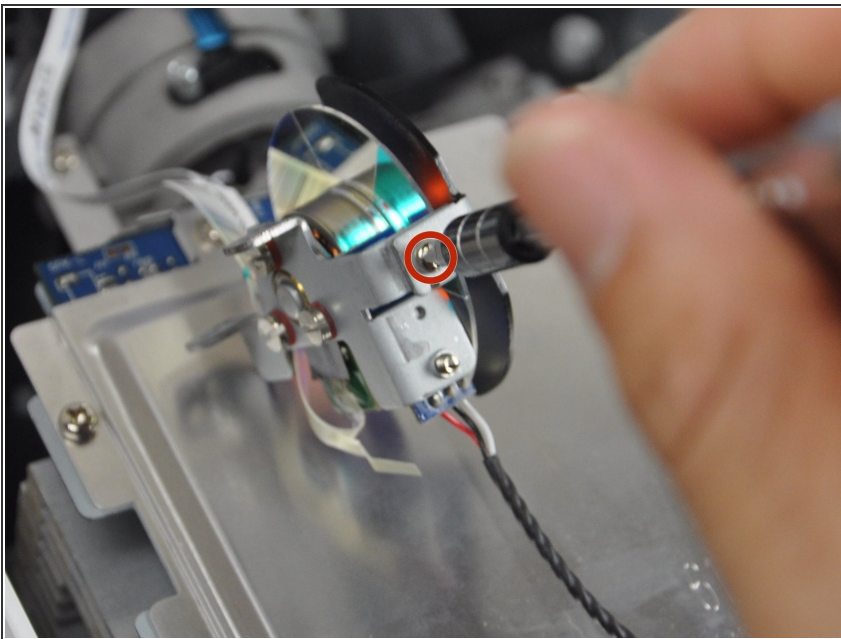
- Use the plastic opening tool to remove the wiring.

Step 6



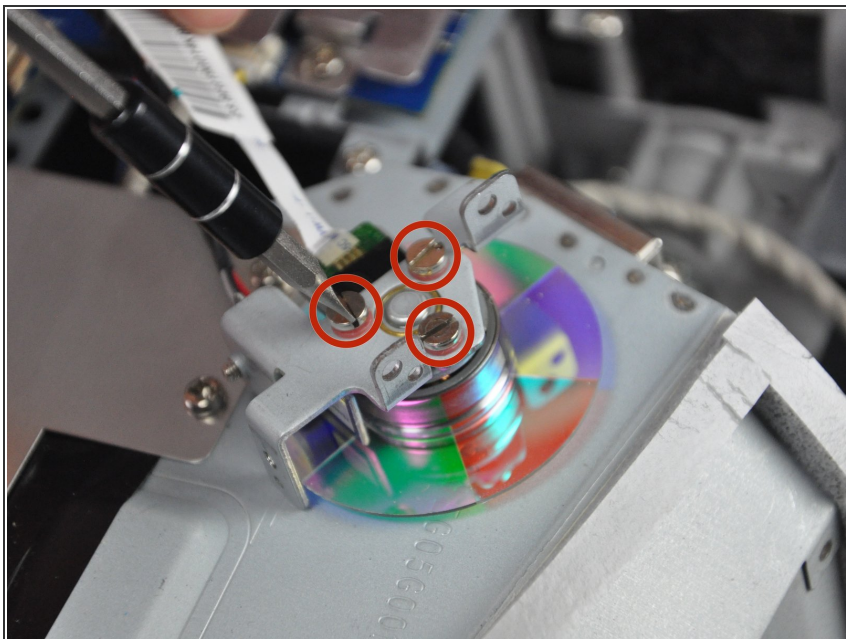
- Use a Phillips #1 screwdriver to remove the 5.5 mm screws around the pin wheel.

Step 7



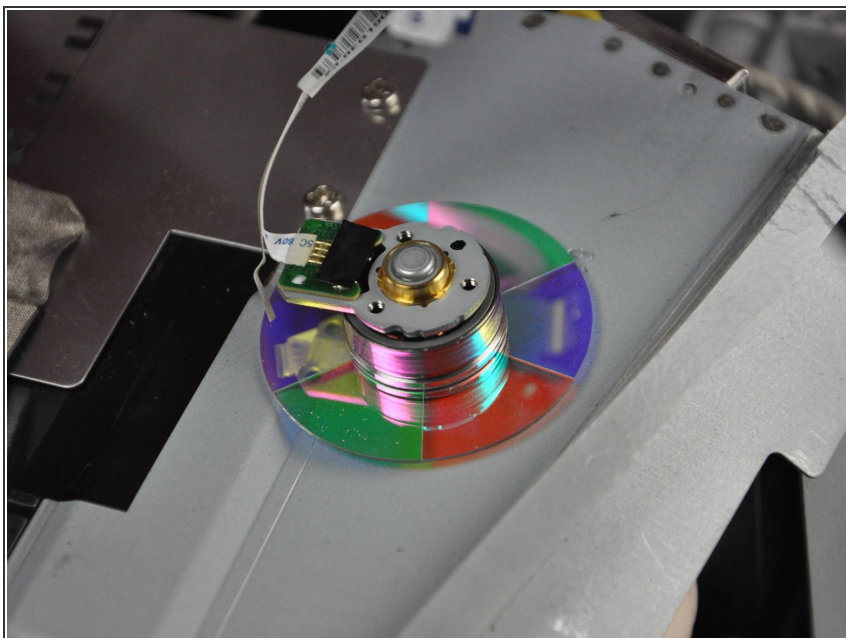
- Use a Phillips #1 screwdriver to remove 1 more 5.5 mm screw.

Step 8



- Using a flat head screw driver unscrew the back part to release the color wheel.
- ⚠ Do this carefully because these screws do not pull out.

Step 9



- Once unscrewed, remove the color wheel, and replace the part.

To reassemble your device, follow these instructions in reverse order.