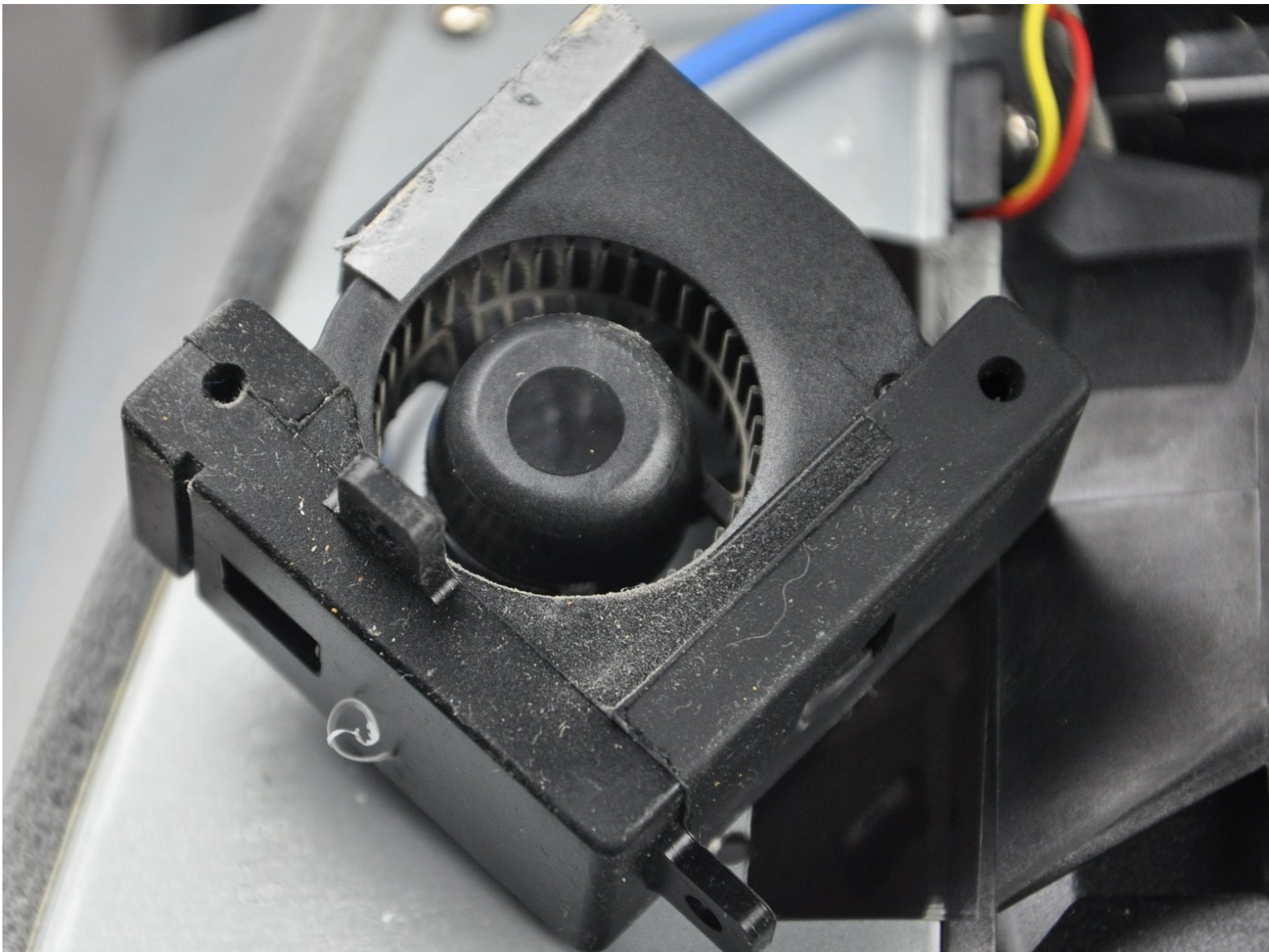




# Optoma HD20 Fan Replacement

How to replace a Optoma HD20 fan.

Written By: Trevor



# INTRODUCTION

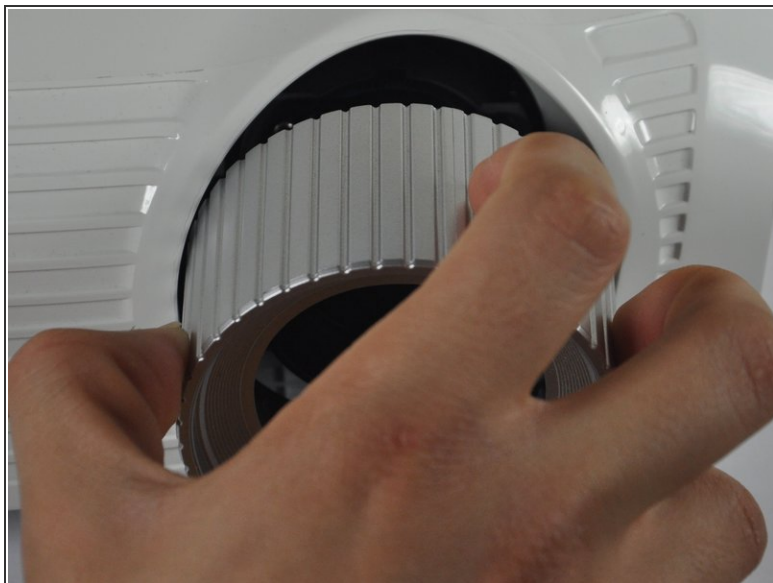
Use this guide to remove the fan from your Optoma HD20.



## TOOLS:

- [iFixit Opening Tools](#) (1)
  - [Phillips #0 Screwdriver](#) (1)
  - [Phillips #1 Screwdriver](#) (1)
  - [5mm Nut Driver](#) (1)
-

## Step 1 — Disassembling Optoma HD20 Cover



- Twist the focal cap clockwise until it is fully extended.
- Remove the focal cap by pulling it straight out.

## Step 2



- Use a Phillips #1 screwdriver to remove the three 7.5mm screws on the bottom of the device.

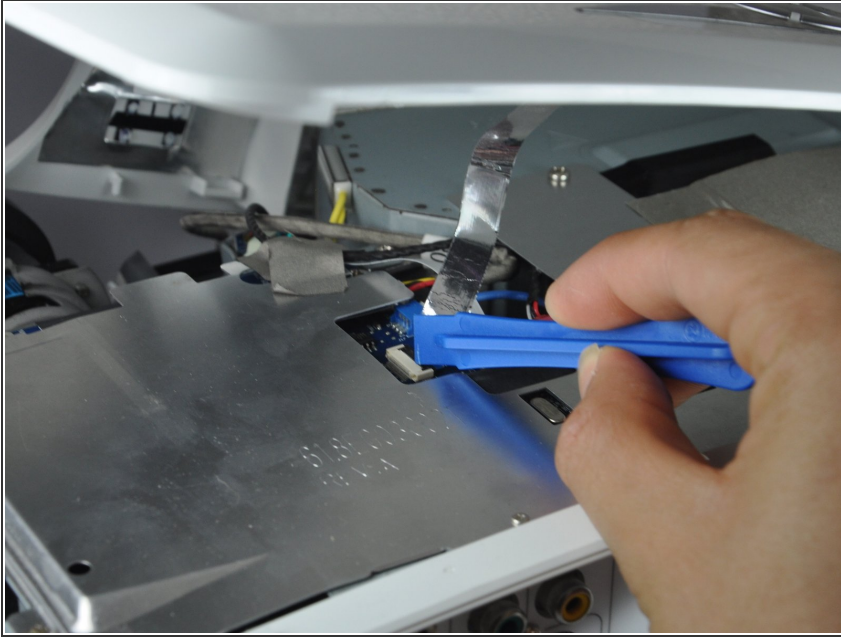
## Step 3




- Use a plastic opening tool to gently pry the top cover off of the device.
- ⓘ It is easier to pry off the cover from the back side just above the HDMI ports.



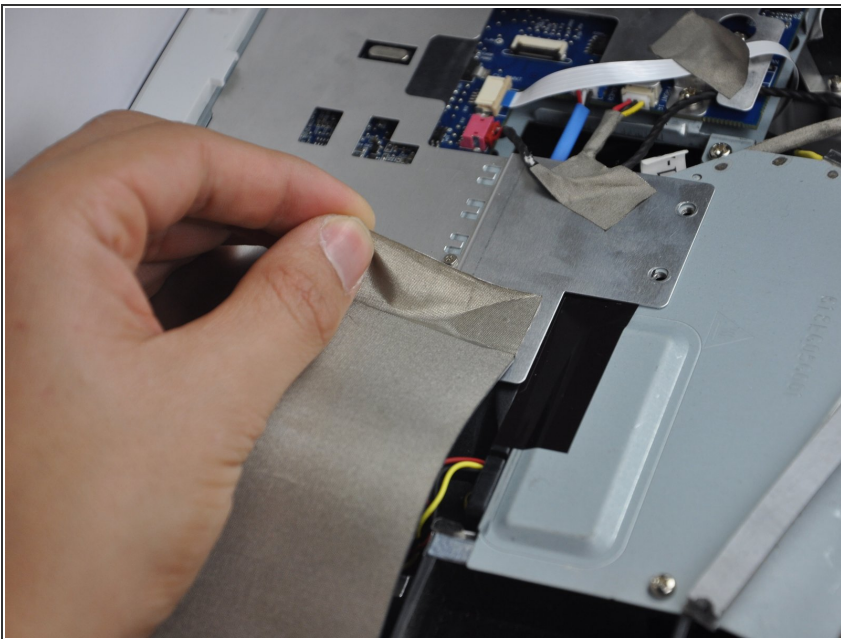
## Step 4



 When removing the cover, be cautious of the ribbon connecting the top buttons to the main circuit board. The ribbon must be disconnected before proceeding.

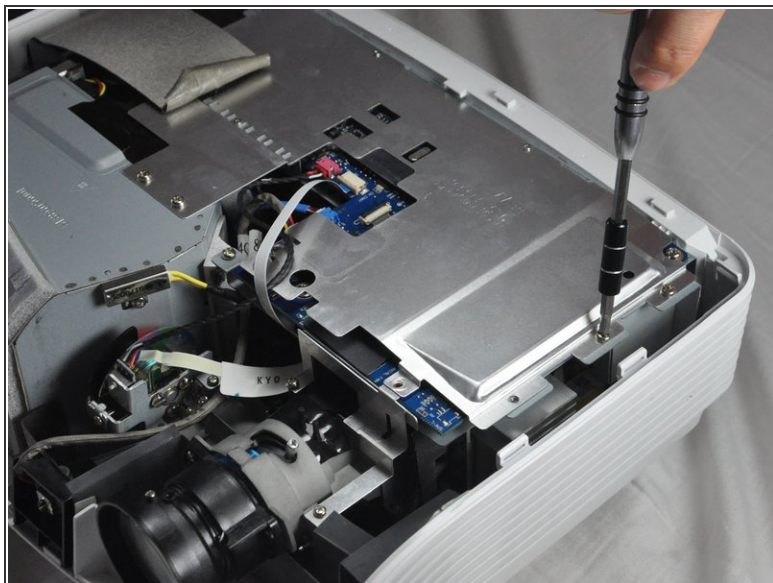
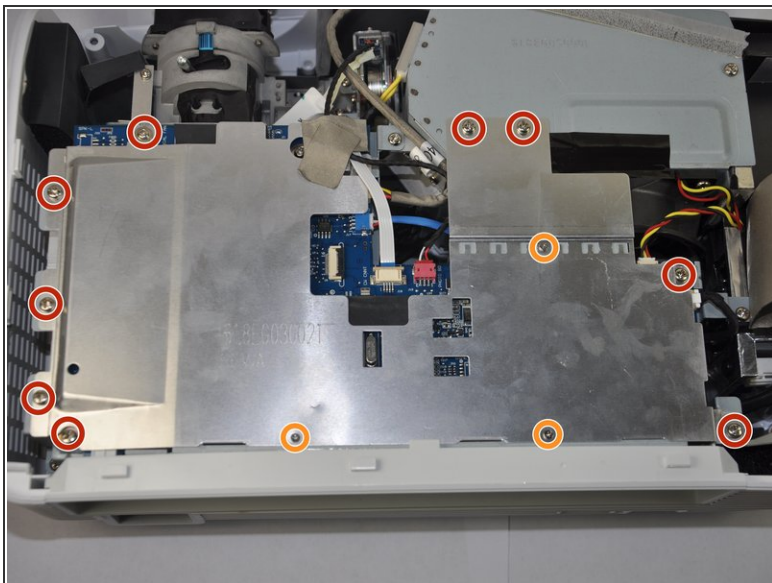
- Remove the ribbon by disconnecting it from the main circuit board.
- Lift up the clip holding it down and pull the ribbon out.

## Step 5 — Fan



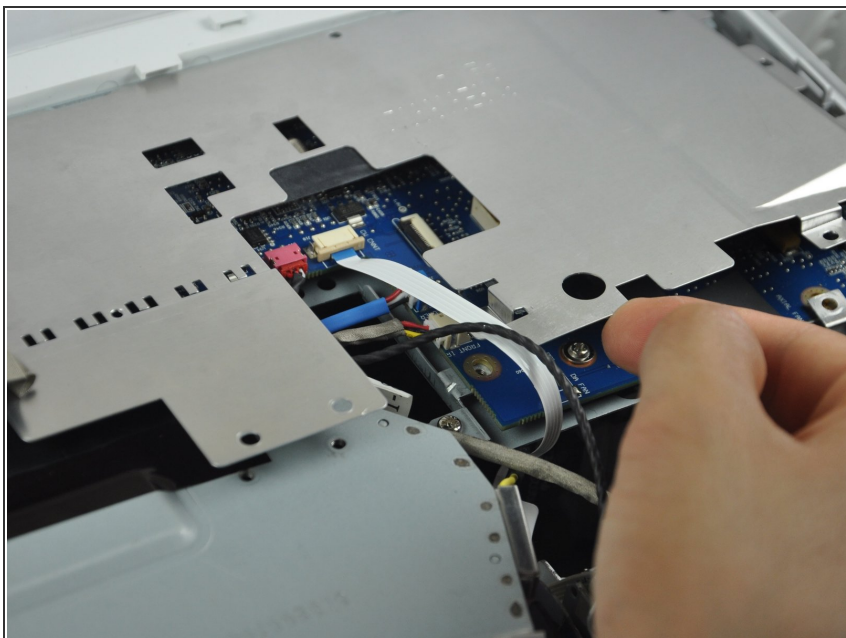
- Peel off the tape that is holding the metal casing down.

## Step 6



- Use a Phillips #1 screwdriver to unscrew the nine 4.5mm screws.
- Use a Phillips #0 screwdriver to unscrew the three 2.5 mm screws. This will allow you to remove the metal casing.

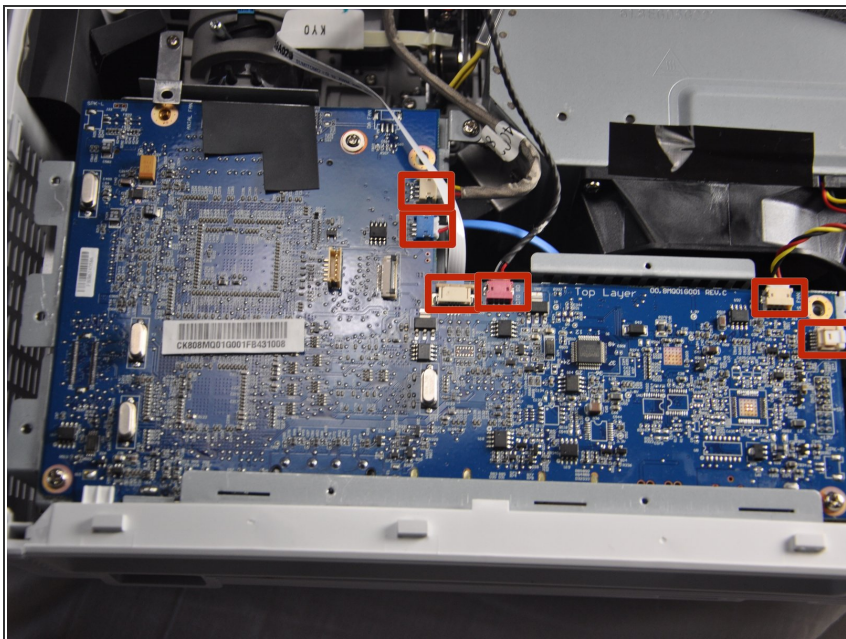
## Step 7



- Remove the metal casing by lifting it up off of the circuit board.

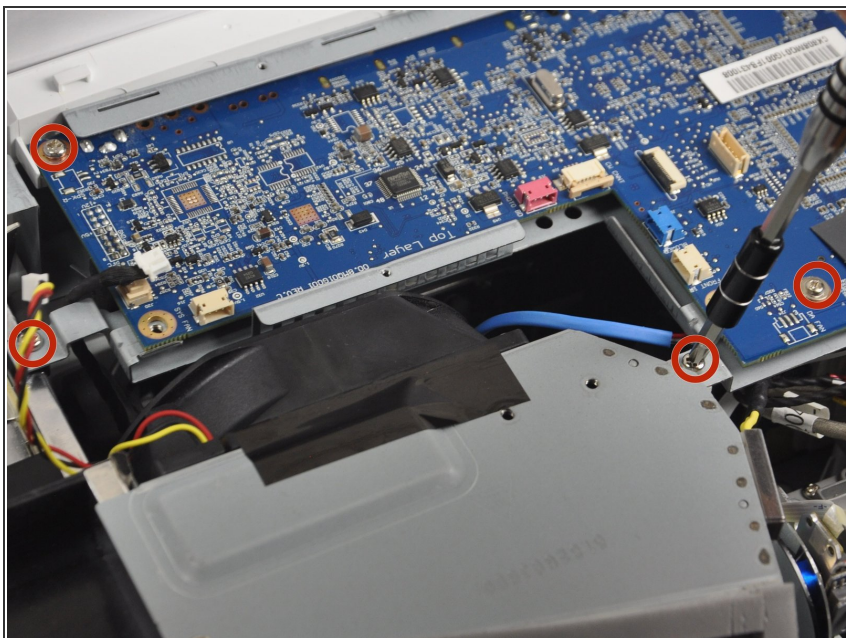


## Step 8



- Unplug the six wires stemming from the circuit board.

## Step 9



- Use a Philips #1 screwdriver to remove the four 4.5 mm screws

## Step 10



- Remove the three 4.5 mm screws using the Philips #1 screwdriver.

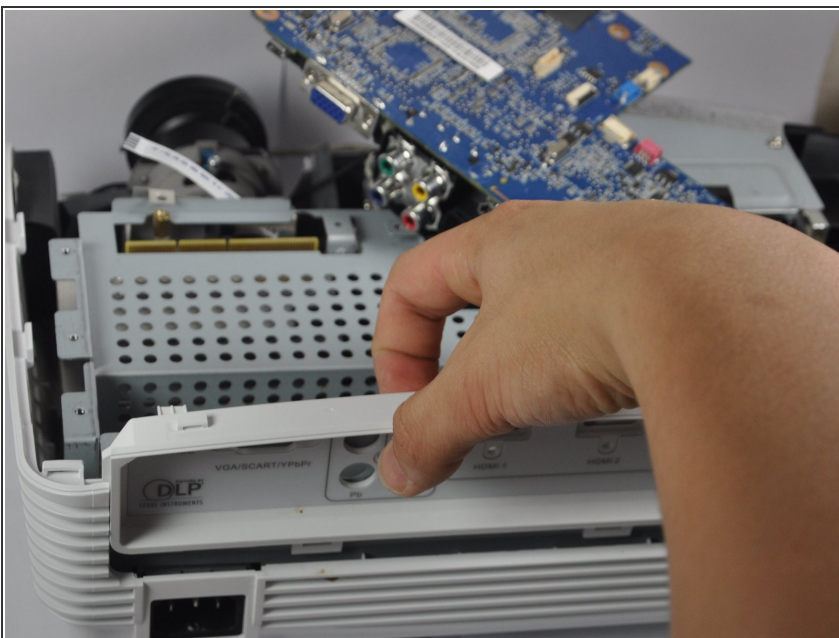


## Step 11



- Remove the two 4.5 mm screws located on either side of the VGA/SCART port using a 5 mm nut driver. This will further release the plastic backing from the motherboard.

## Step 12



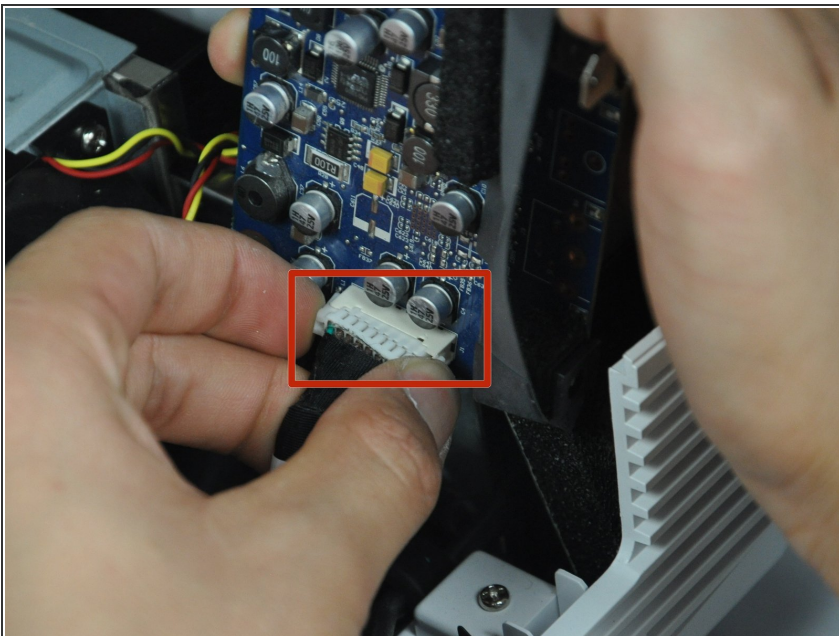
- Slightly rotate the motherboard clockwise. This will prevent ports from getting caught on the plastic backing.
- Lift the plastic backing to remove it.

## Step 13



- ✦ Ensure all screws are removed
- Lift up the motherboard and take out the metal container beneath it.
- ⓘ Do this very carefully as there is still one cable attached.

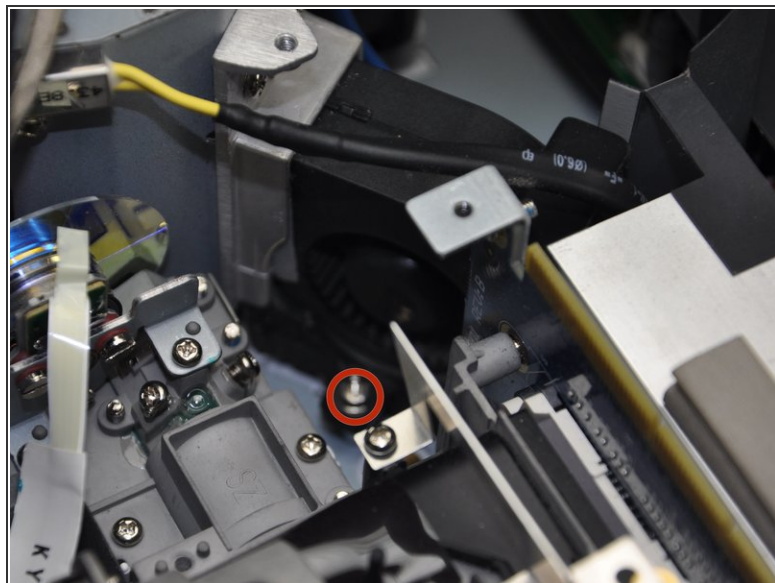
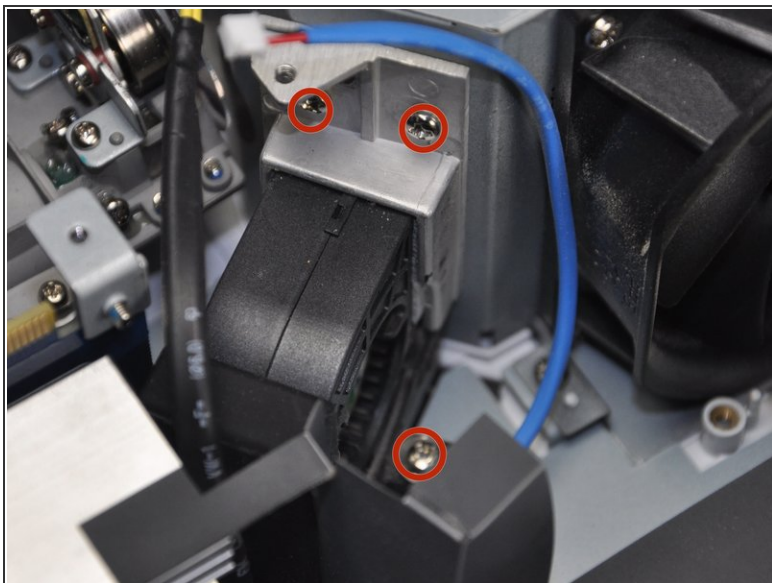
## Step 14



- Unplug the white connector underneath the right side of the circuit board.
- ⓘ To remove, pinch both sides of the connector and pull it away from the circuit board.

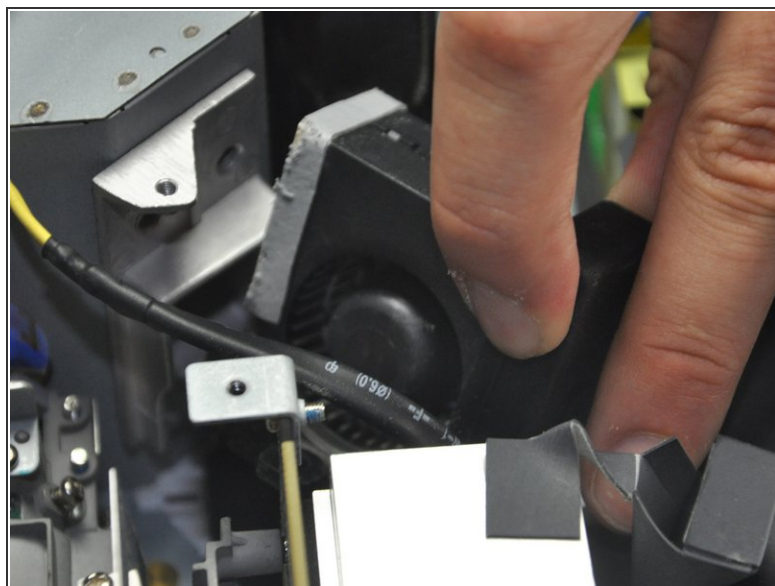
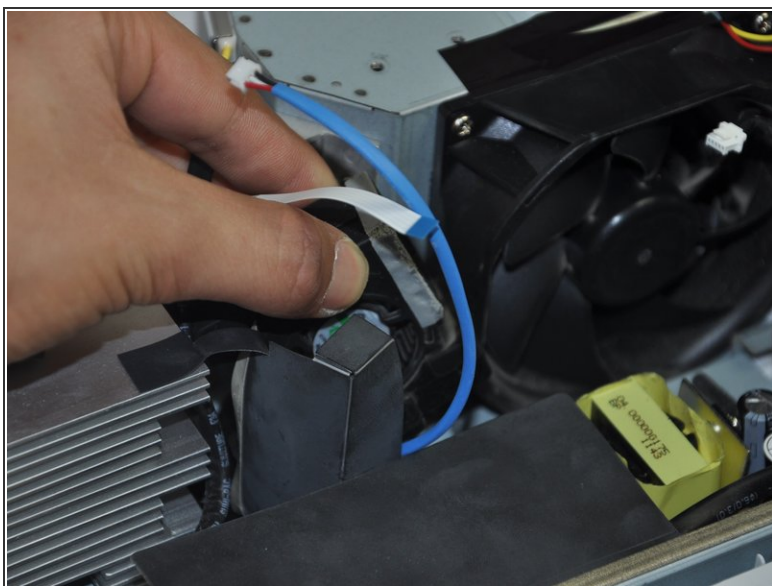


## Step 15



- Use a Phillips #1 screwdriver to remove four 5 mm screws. This will release the fan.

## Step 16



- Pull the fan away from the metal housing unit.
- Gently lift the fan up and out of the device. The fan is now removed.



To reassemble your device, follow these instructions in reverse order.