



Oral-B Vitality Battery Replacement

This guide will give a detailed breakdown of the battery replacement process.

Written By: Miles Gunty



INTRODUCTION

Electric toothbrushes are powered by a rechargeable battery, that enables the reciprocating brushing motion of the bristles. If your electric toothbrush loses power quickly or doesn't hold charge, most likely the rechargeable battery needs to be replaced.



TOOLS:

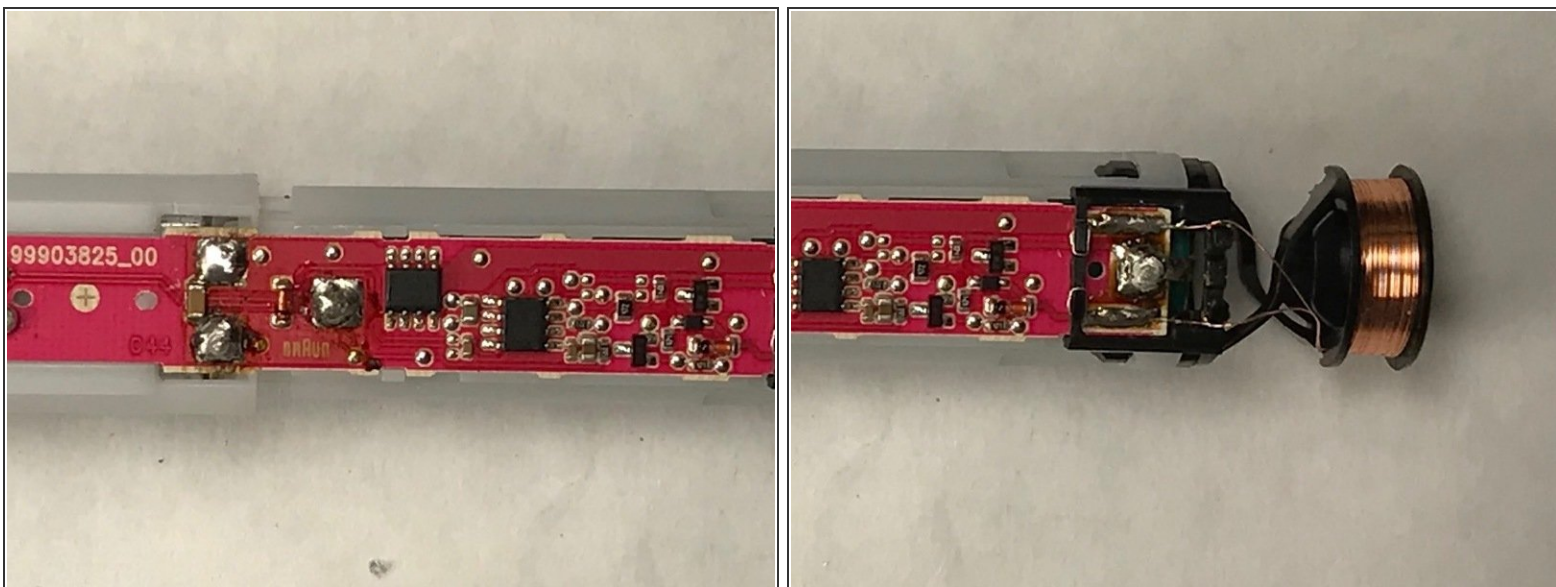
- [Slip Joint Pliers](#) (1)
 - [iFixit Opening Tools](#) (1)
 - [Soldering Iron](#) (1)
 - [Solder](#) (1)
 - [Soldering Tweezers](#) (1)
 - [Desoldering Braid](#) (1)
-

Step 1 — Battery



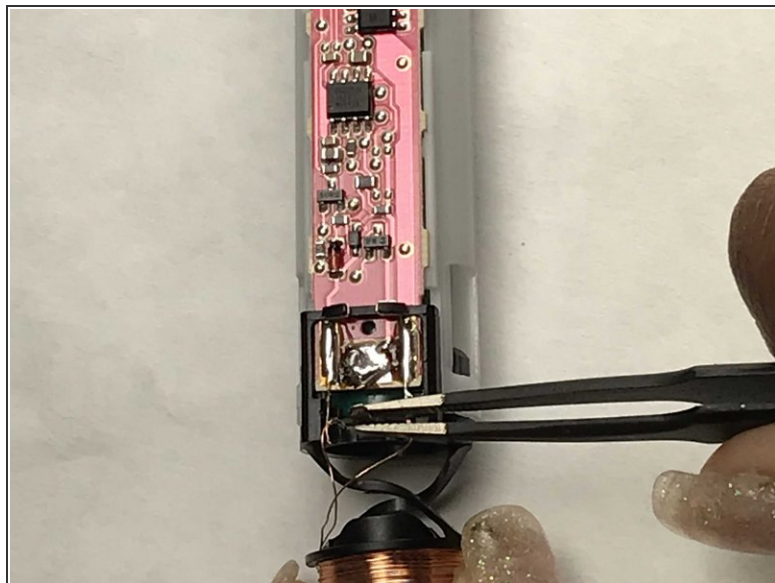
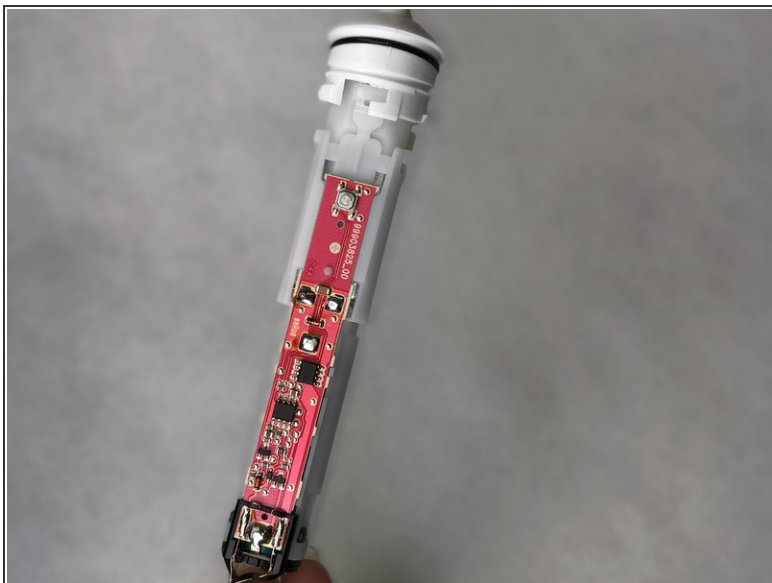
- Pull off head, and use pliers to remove the white cap. Pull out the circuit core.

Step 2



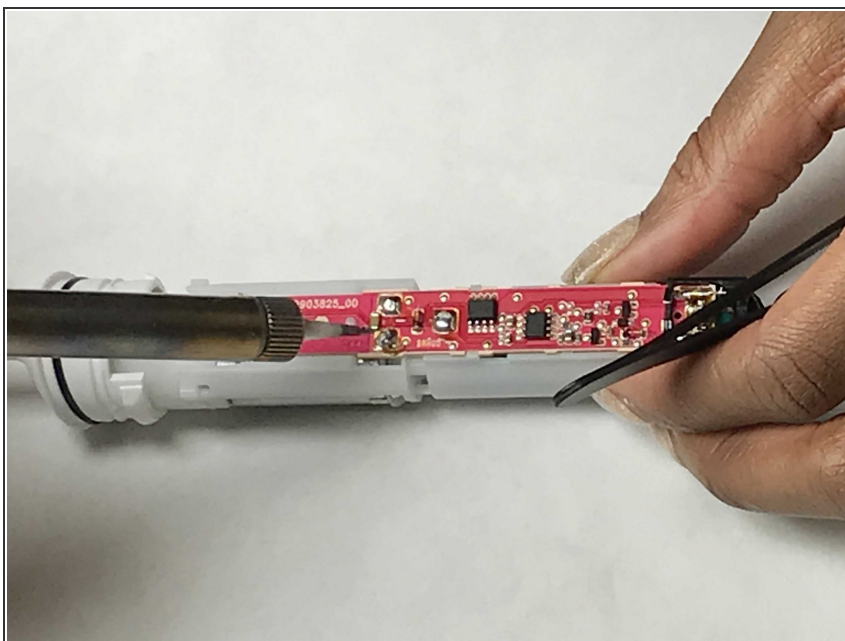
- De-solder in these four (4) locations.
- The two (2) motor connections
- The Positive (+) side of the battery
- The Negative (-) side of the battery

Step 3



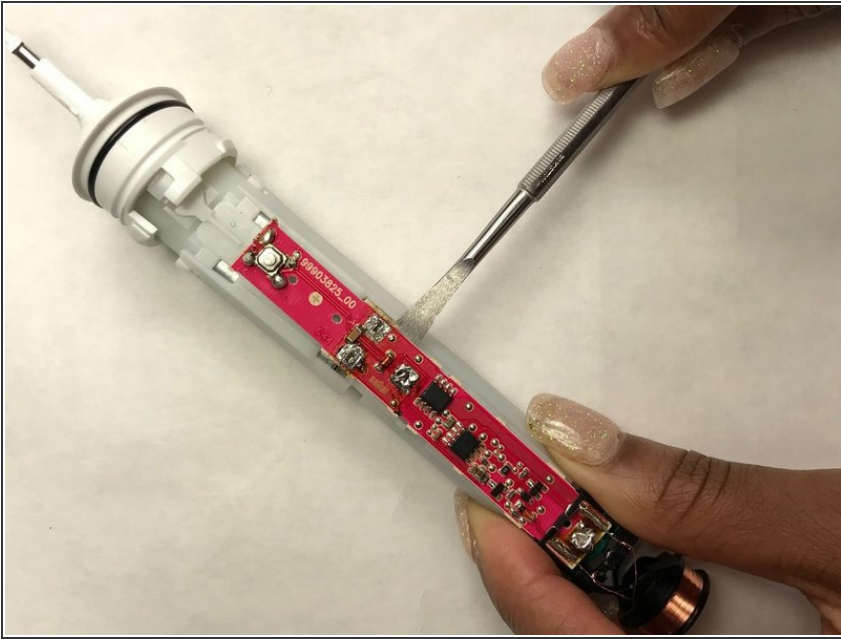
- De-Solder lower battery connection terminal. Bend back battery terminal to clear circuit board.

Step 4



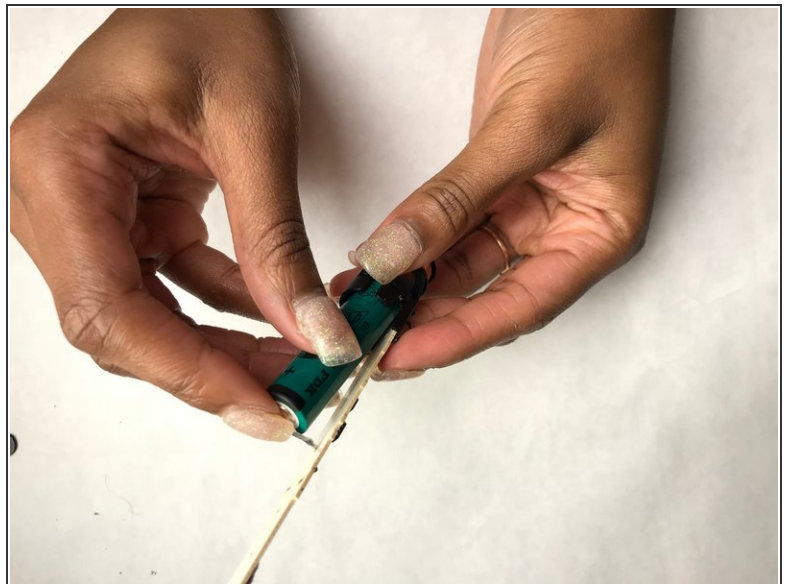
- De-Solder the three (3) upper terminals from the circuit board.

Step 5



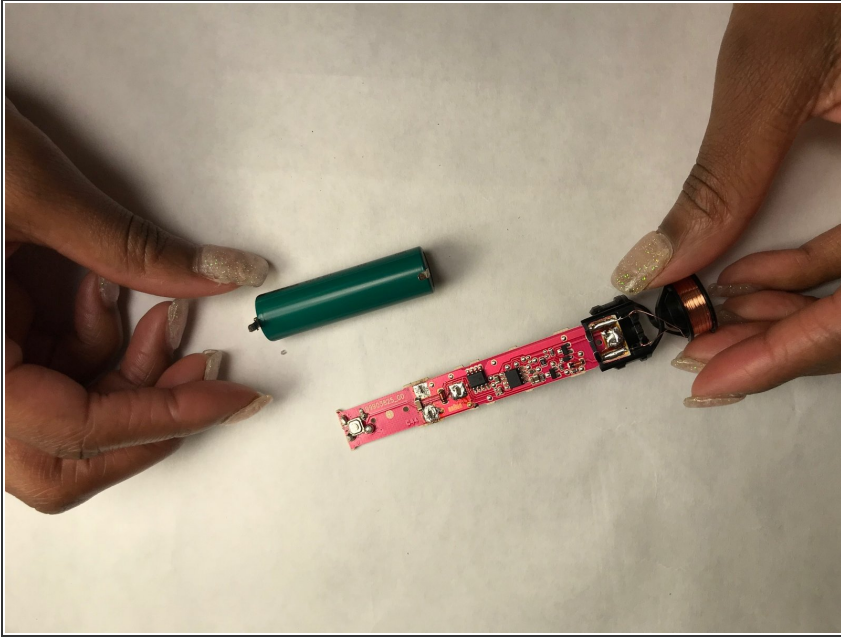
- Use plastic prying tools to carefully pry off the circuit board. (Utilize metal spudger as a last resort)
- ⚠ There is a white tab that goes through the board, be careful when removing the circuit board.

Step 6



- Pull the circuit board and battery assembly out. Then proceed to remove the battery from the circuit board

Step 7



- i** When re-installing battery, remember to bend down lower terminal. And the negative (-) terminal is closest to the copper wires
- i** **Ensure you recharge the toothbrush after the repair.** Even if the replacement battery is already fully charged, the toothbrush will fail to power on if you don't recharge the toothbrush.

To reassemble your device, follow these instructions in reverse order. Remember to apply just enough solder to re-attach the terminals.