



Oral-B Vitality Power Button Replacement

Remove and replace the power button located on the circuit board.

Written By: Grady Bennett



INTRODUCTION

Electric toothbrushes are powered on by a small on/off switch located on the outer case of the toothbrush handle. The on/off switch signals the circuit board to power the motor. If you press the power button and the toothbrush doesn't power on, most likely the power button needs to be replaced.



TOOLS:

- [Slip Joint Pliers](#) (1)
- [Soldering Workstation](#) (1)



PARTS:

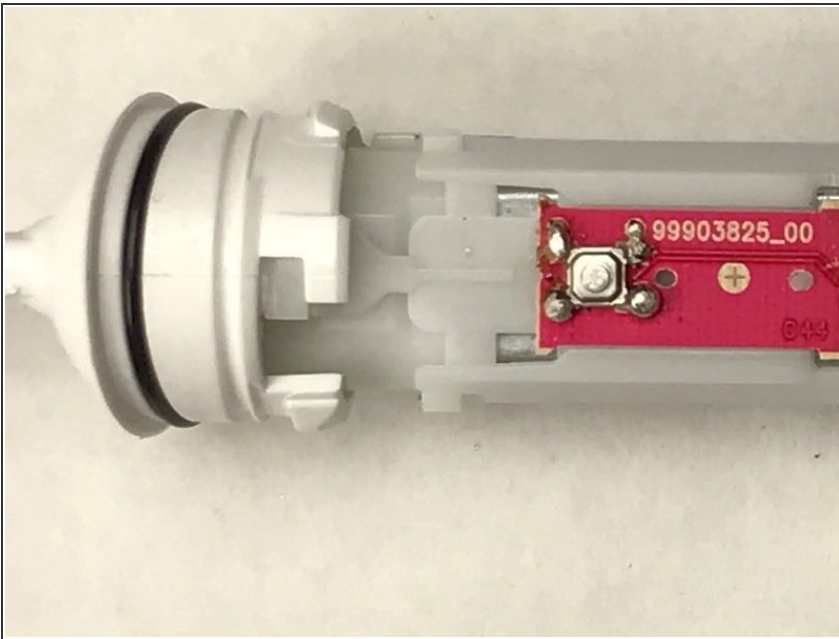
- [Mini Pushbutton Switch](#) (1)

Step 1 — Power Button



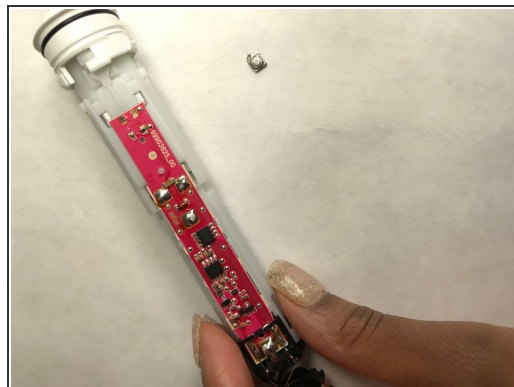
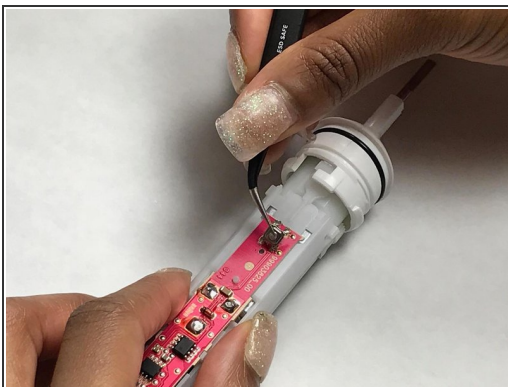
- Using the pliers, rotate the head base 90 degrees counterclockwise and remove core from the handle.

Step 2



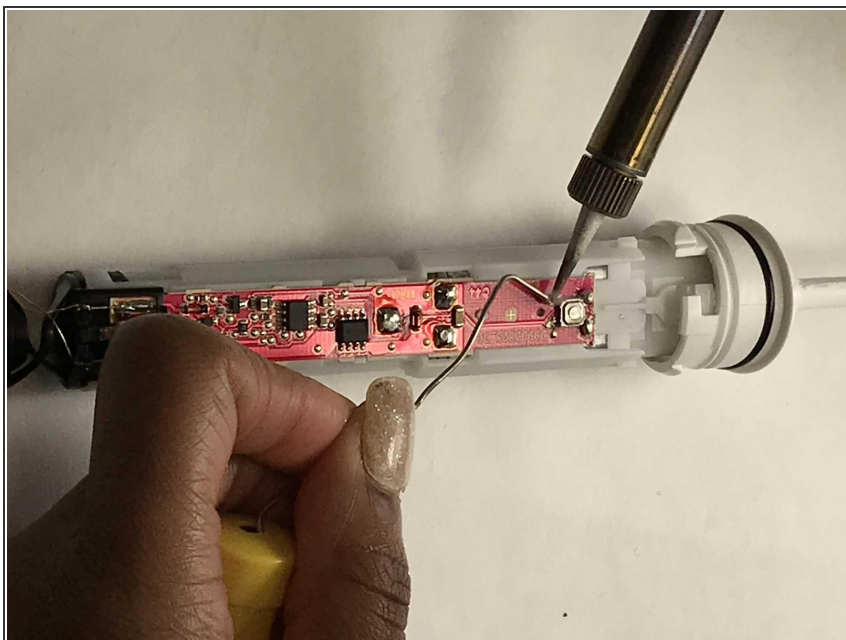
- Locate the 4 terminals connecting the power button to the circuit board.

Step 3



- Desolder the 4 terminals and remove the old button.
- Remove as much of the old solder as possible.

Step 4



- ★ Attach the new button by soldering the 4 terminals with new solder.

To reassemble your device, follow these instructions in reverse order.