



Oral-B White Pro 1000 Battery Replacement

Replace your rechargeable battery for the Oral-B White Pro 1000 electric toothbrush.

Written By: Carl Kinsey



INTRODUCTION

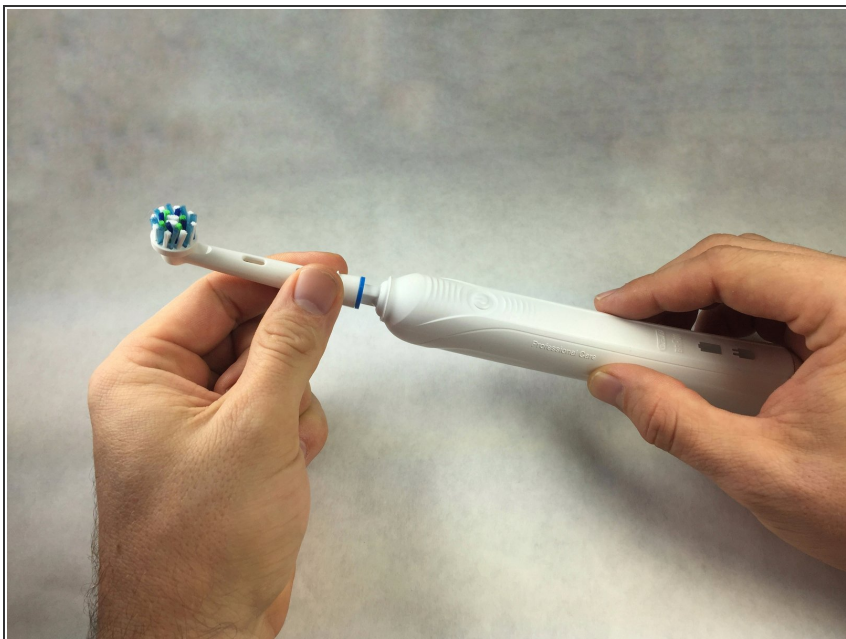
Battery Replacement guide for Oral-B White Pro 1000 rechargeable electric toothbrush due to faulty battery. This guide illustrates the disassembly of the Oral-B White Pro 1000 electric toothbrush. Use caution not to short the positive (+) and negative (-) terminals when handling the battery. This guide also requires the use of a soldering tool which reaches high temperatures. Refer to [this helpful guide](#) for some soldering and desoldering tips.



TOOLS:

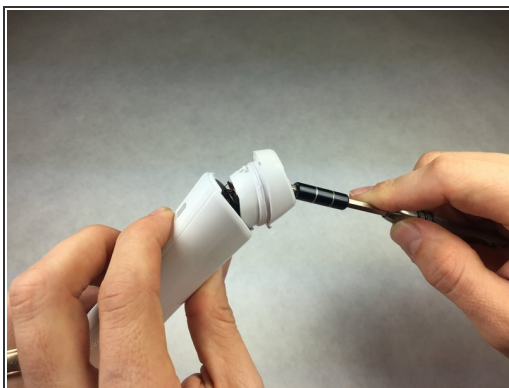
- [Solder](#) (1)
 - [Flathead 3/32" or 2.5 mm Screwdriver](#) (1)
 - [Soldering Iron](#) (1)
-

Step 1 — Motherboard



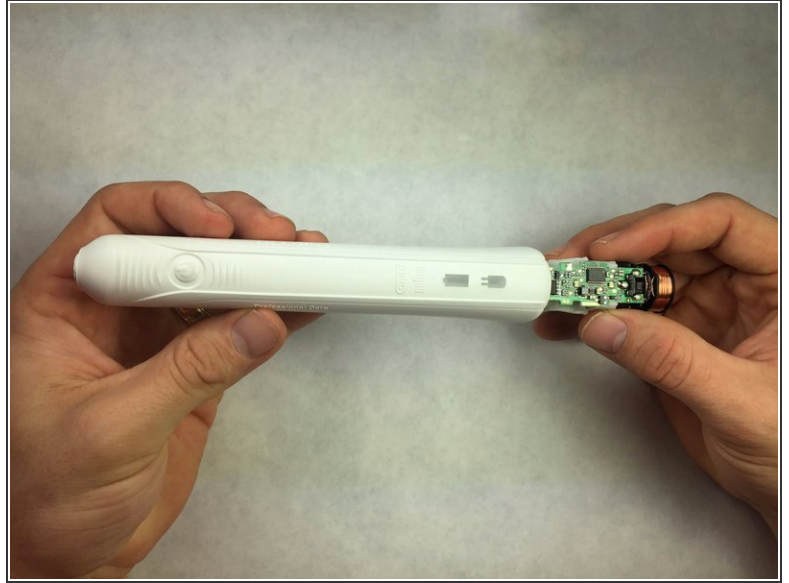
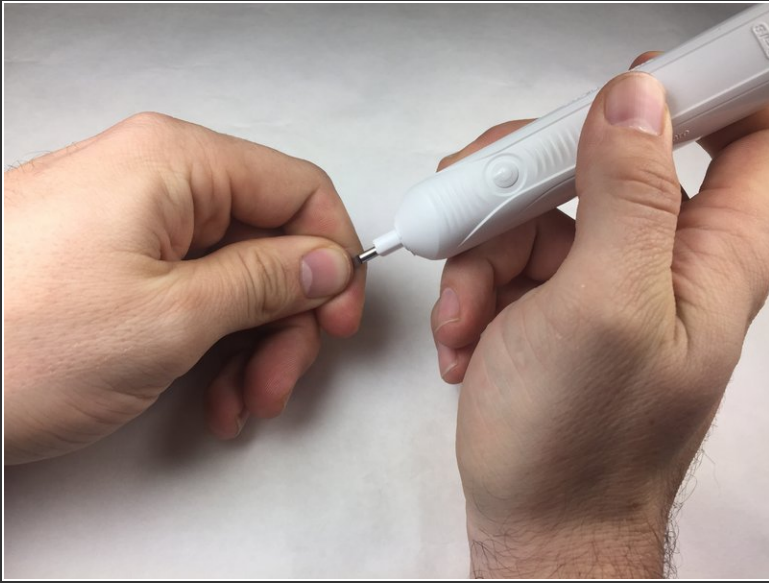
- Remove the brush head by pulling the top away from the base.

Step 2



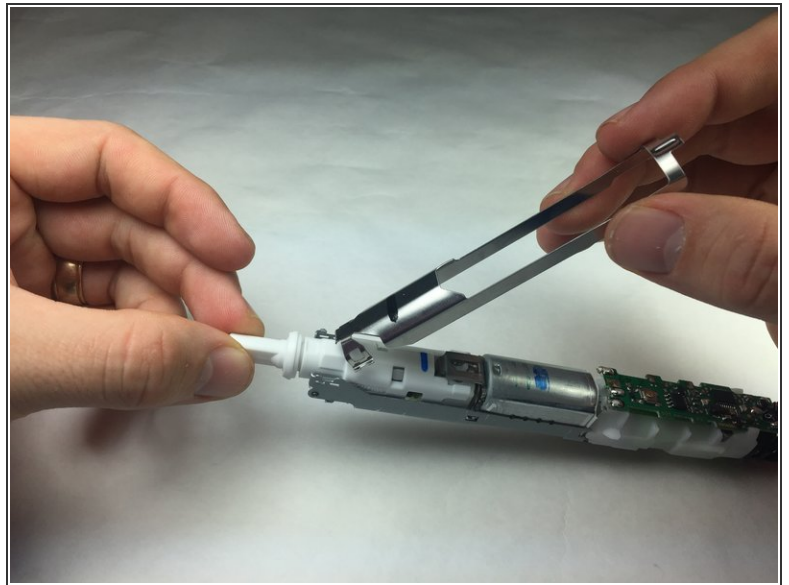
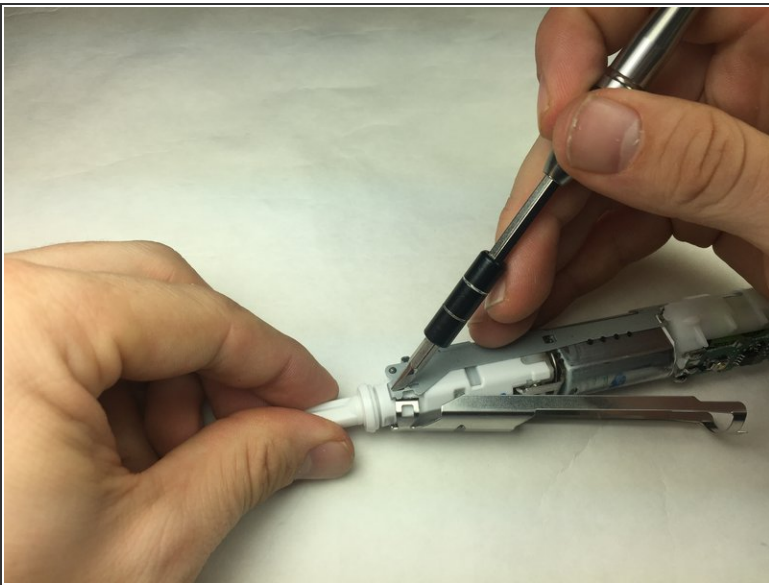
- Pry open the end cap from the toothbrush body.
- Remove the spring.

Step 3



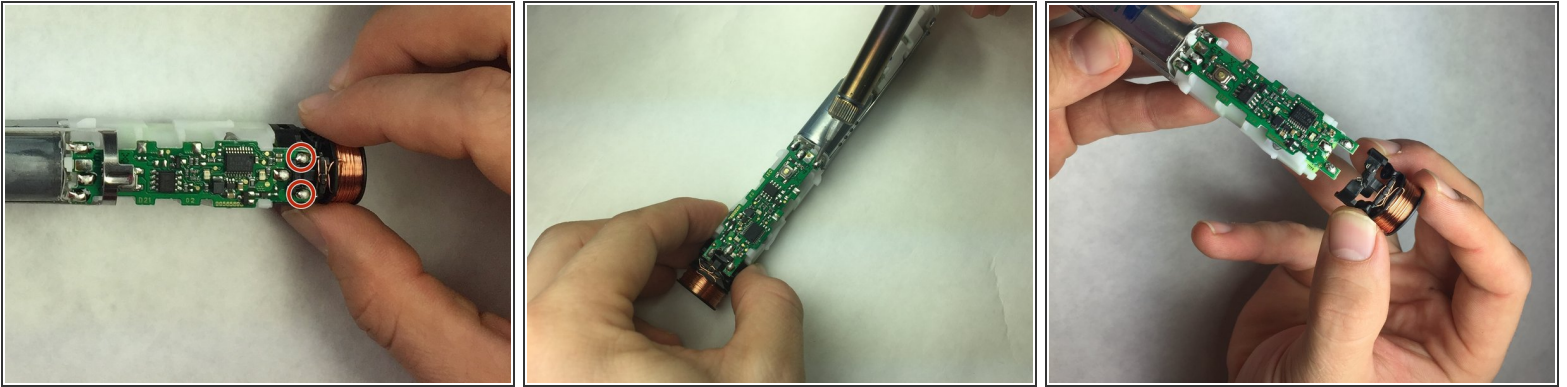
- Apply pressure on the brush shaft to release the toothbrush internals.
- Remove the internals through the bottom of the toothbrush body.

Step 4



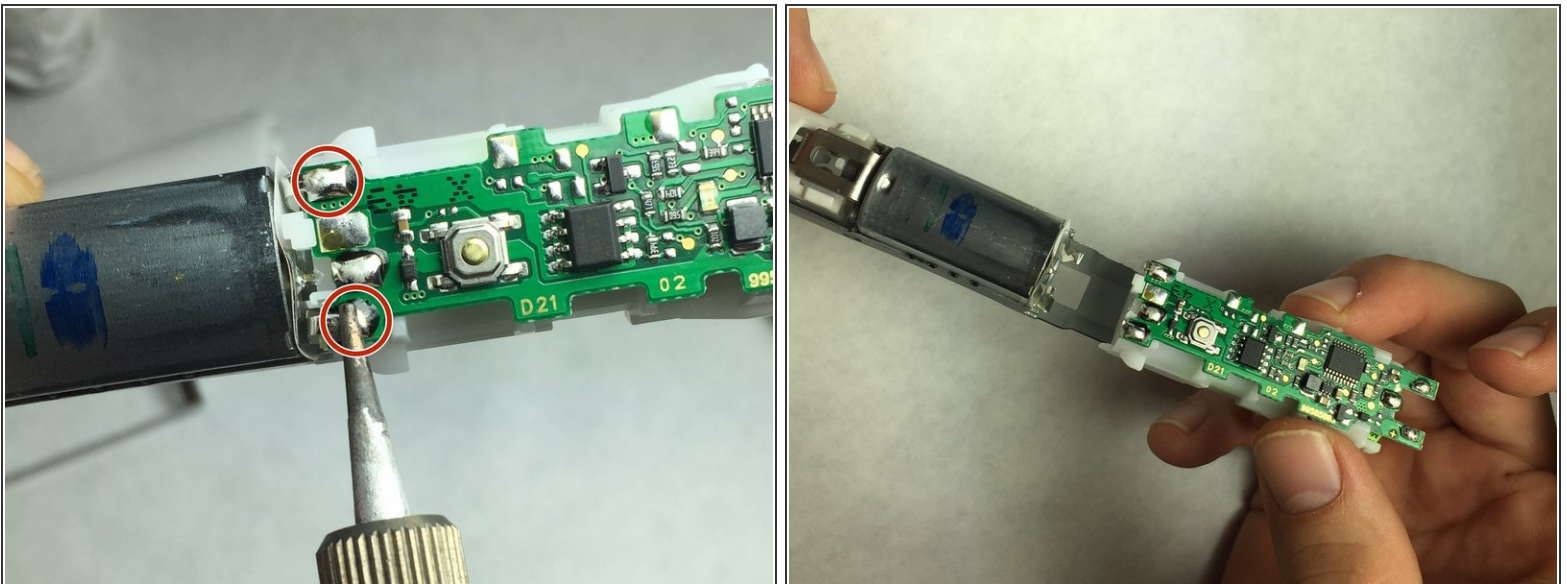
- Use flat head screwdriver to remove power button pressure plate.

Step 5



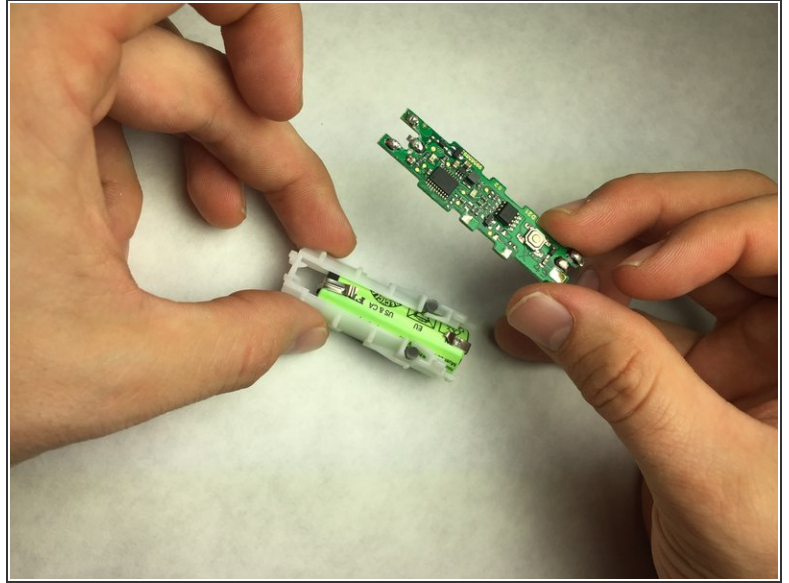
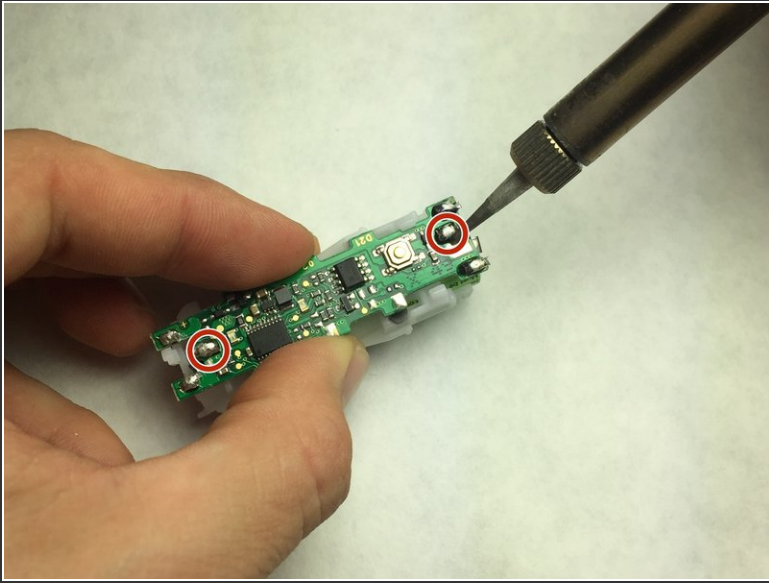
- Desolder the coil wire from the motherboard.
 - ① Check out [this helpful guide](#) for some soldering and desoldering tips.
- Squeeze and remove coil from motherboard.

Step 6



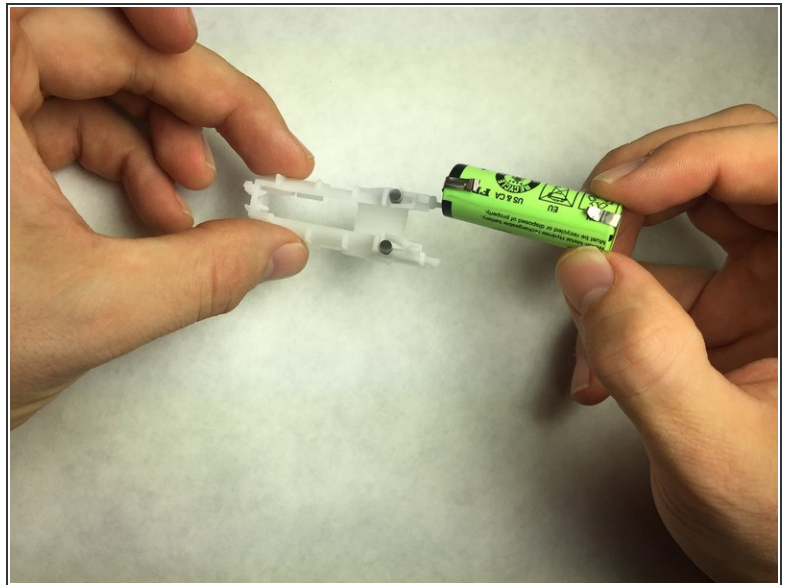
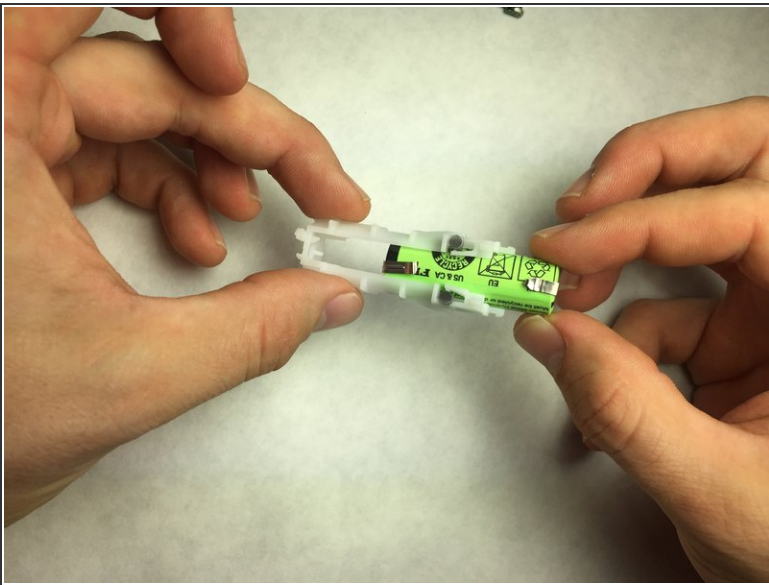
- Desolder the motor from motherboard.
- Remove motherboard and battery from body of toothbrush internals.

Step 7



- Desolder the battery connections from the motherboard.
- Remove motherboard from battery holder.

Step 8 — Battery



- Pull to slide battery from battery housing.
- Remove battery.

To reassemble your device, follow these instructions in reverse order.