



# Oregon Scientific Meep! X2 Power Button Replacement

In this guide we'll show you how to replace the power button on your Meep! X2 tablet.

Written By: J'mel Henneman



## INTRODUCTION

Use this guide to replace a jammed or broken power button in the Oregon Scientific Meep! X2 tablet.



### TOOLS:

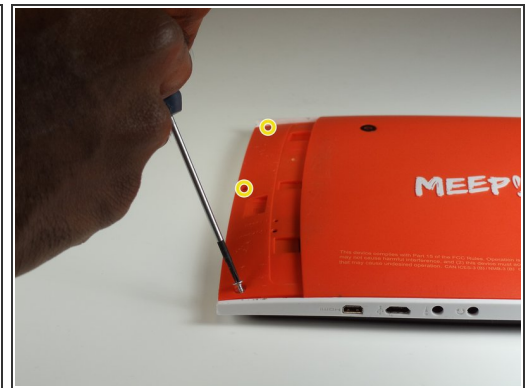
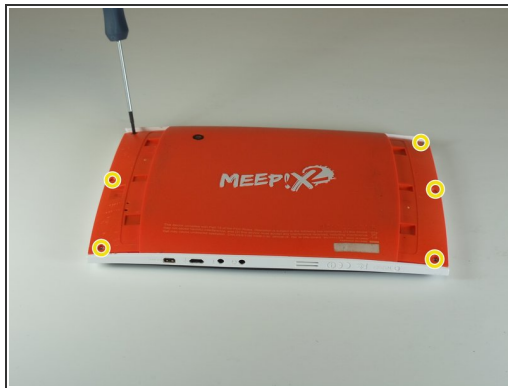
- [Tweezers](#) (1)
  - [Soldering Iron](#) (1)
-

## Step 1 — Rear Casing



- Remove the orange covers from the left and right sides of the device by sliding up against the tabs.

## Step 2



- You can remove the rear casing by unscrewing all six phillips #00(3.5mm x 4.5mm)screws from the left and right side of the device.

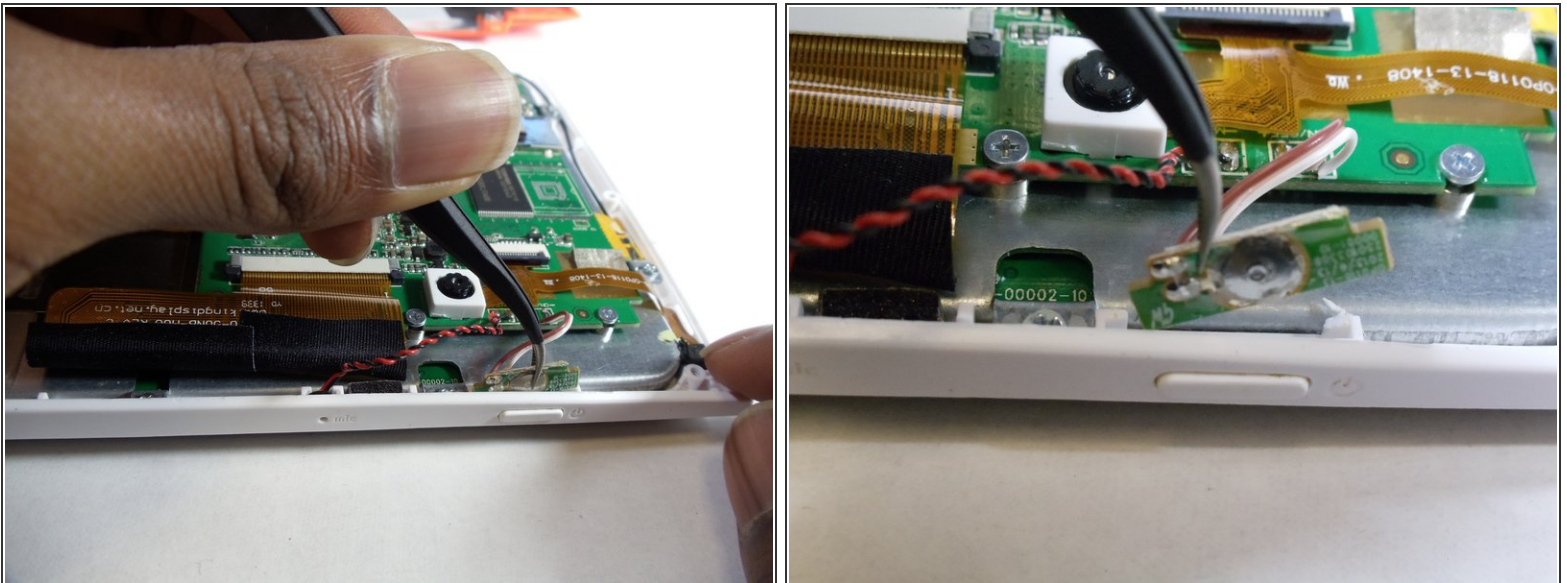


### Step 3



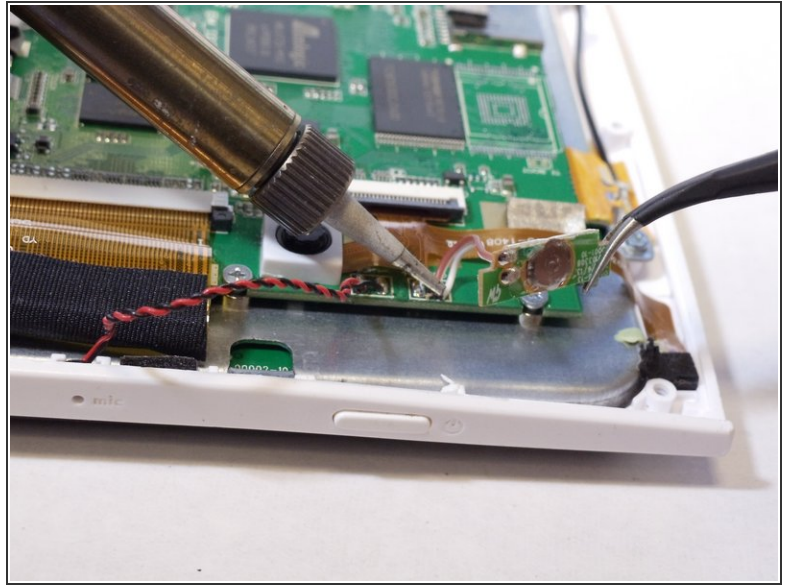
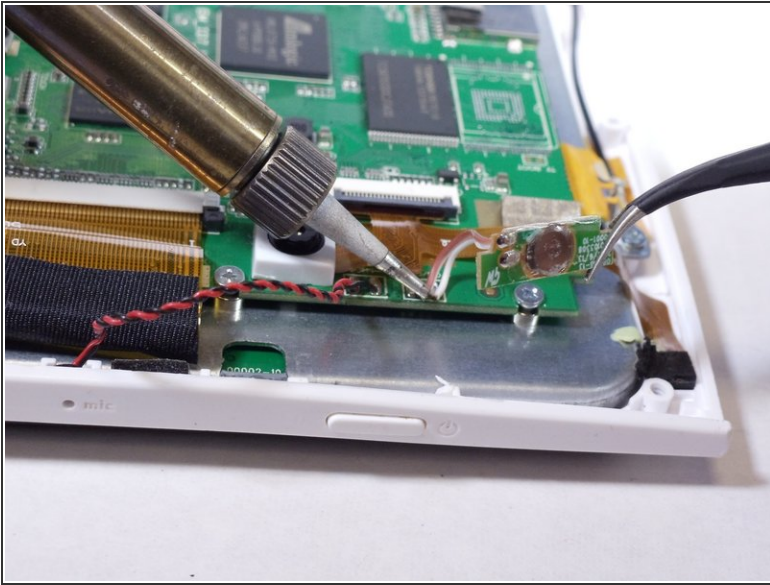
- Use the plastic opening tools to undo the clips around the edges of the device.

### Step 4 — Power Button



- Use a tweezer to gently pull the power button sensor out of the case's slot.

## Step 5



- Use the soldering station to unsolder and remove the power button from the motherboard.

☞ In the case of screen or screen sensor replacement, disregard desoldering steps.

To reassemble your device, follow these instructions in reverse order.