



# Osmo Mobile Analog JoyStick Replacement

This guide will demonstrate step-by-step how to replace a broken or unresponsive joystick .

Written By: William Tyler Wills



## INTRODUCTION

If you have issues with using the joystick, either due to a broken or unresponsive joystick, the joystick module may need to be replaced. This guide will show you how to replace the joystick module.



### TOOLS:

- [1.5mm Hex Screwdriver](#) (1)
- [Tweezers](#) (1)
- [Spudger](#) (1)
- [Phillips #0 Screwdriver](#) (1)
- [Phillips #00 Screwdriver](#) (1)



### PARTS:

- [Osmo Mobile Joystick Replacement](#) (1)

## Step 1 — Osmo Mobile Handle Disassembly



- Remove gimbal from base handle by loosening round plate found at the top of the handle.

## Step 2



- Use Phillips #00 screwdriver to remove the three screws found on the gimbal stabilizer to detach handle from gimbal.
- Carefully detach handle from gimbal and disconnect the cable that connects the two.

### Step 3



- Locate the hex screws found at the top base of the handle, and unscrew using the 1.5mm hex screwdriver.

### Step 4



- Remove joystick by gently pulling away from handle



## Step 5



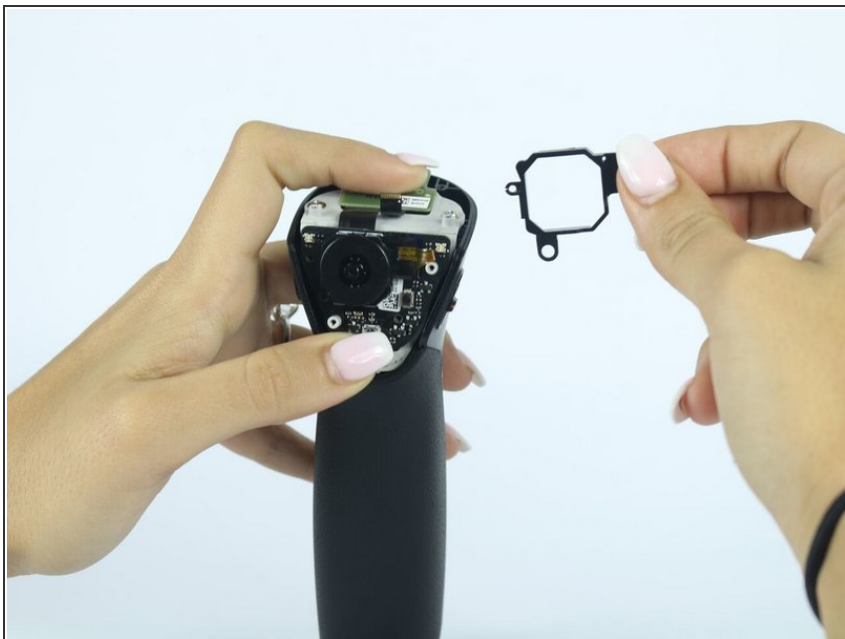
- Remove the quick release PCBA by locating the connecting wires and release the ribbon cable with tweezers.
- Use the spudger to pry open and remove the face plate, starting at the back of the handle.

## Step 6



- Locate four screws directly on top of handle.
- Unscrew the silver, bottom two screws, that are closest to the face plate using the 00 screwdriver.
- Unscrew the black, top two screws, located furthest from the face plate, using the 0 screwdriver.
- Remove the remaining two screws found on the front of the faceplate.
- Remove the rest of the face plate shell.

## Step 7 — Analog Joystick



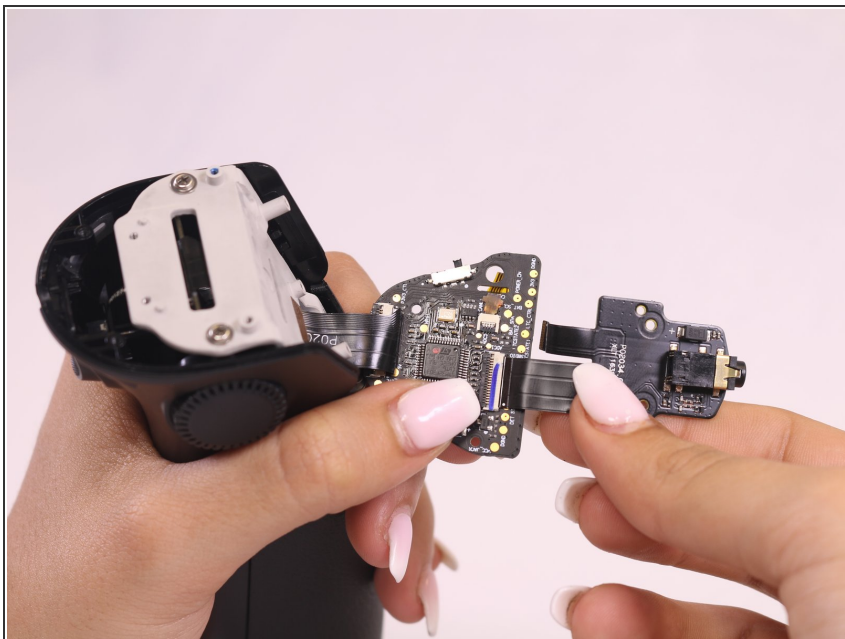
- Remove the top left screw on the joystick panel with 00 screwdriver.
- Lift the faceplate holding joystick module.

## Step 8



- Remove the bottom right screw on the joystick panel with the #00 Phillips screwdriver.

## Step 9



- Hold down the larger of the two ribbon cables, and pull on the circuit board with a constant and careful down and out motion.

## Step 10



- Gently remove joystick module by pulling it through the circuit board and inserting the new module.

To reassemble your device, follow these instructions in reverse order.