



Osram Lightify Disassembly

This guide shows how to disassemble the Osram Lightify gateway.

Written By: Aiden Baker



INTRODUCTION

This guide shows how to disassemble the Osram Lightify gateway.



TOOLS:

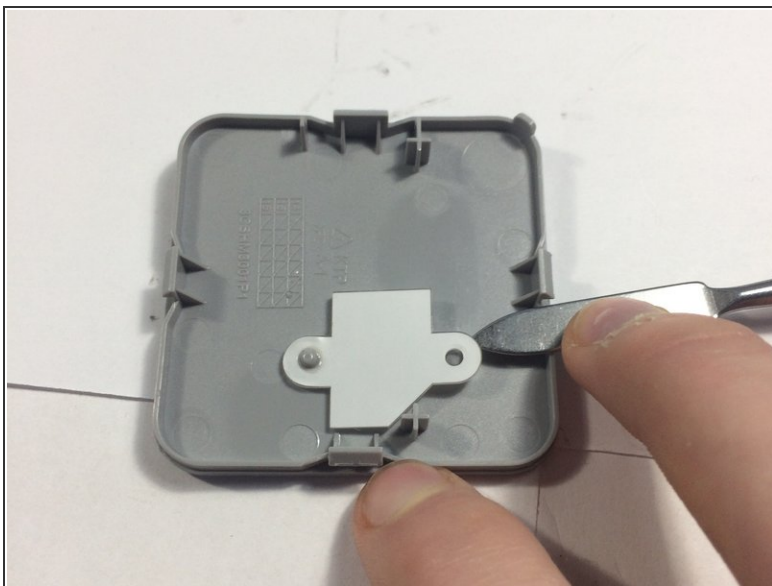
- [Metal Spudger](#) (1)
 - [T9 Torx Screwdriver](#) (1)
 - [Tweezers](#) (1)
-

Step 1 — Osram Lightify Disassembly



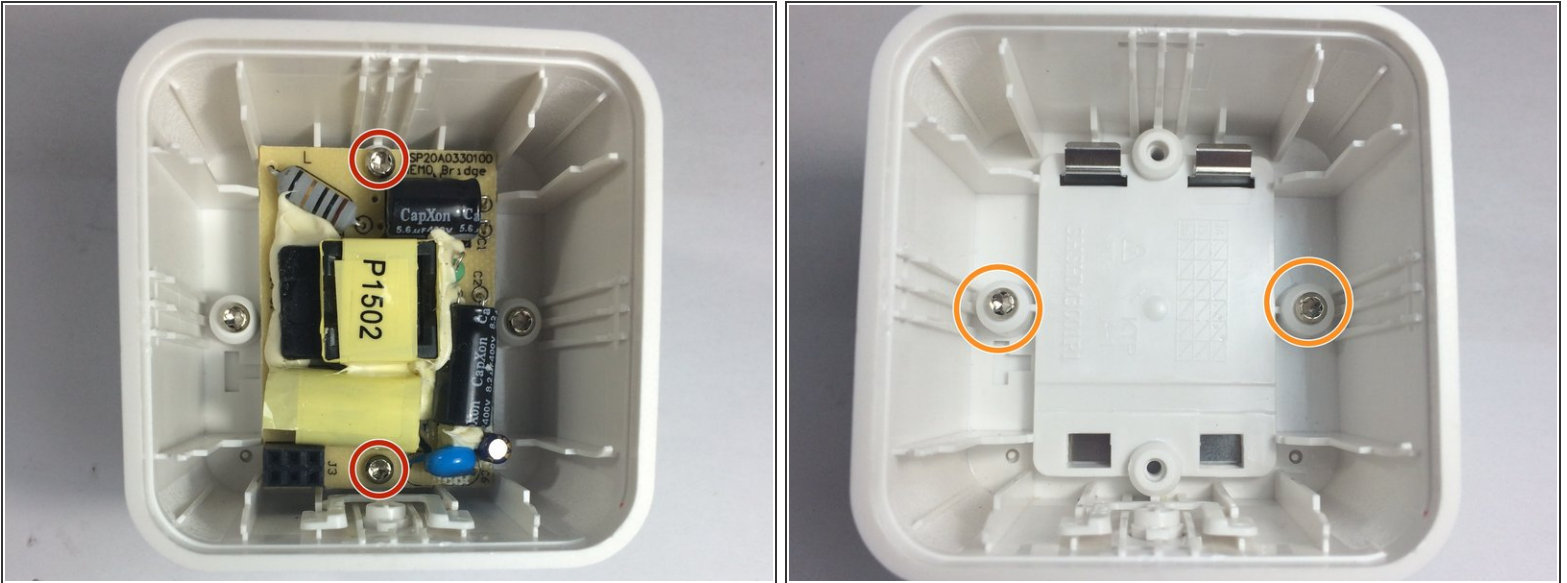
- Remove the front using a metal spudger.
- ① Once you can get your fingers in, remove the rest using your hand.

Step 2



- On the back of the front cover, remove the white plastic using a metal spudger.
- Remove the PCB using a spudger

Step 3



- Once the PCB is removed, use a Torx T9 screwdriver to unscrew and remove the power supply.
- Remove the screws holding on the back cover with a Torx T9 screwdriver and remove the back cover.
- ⓘ all the screws are the same. they can be mixed with no problem.

Step 4



- Remove the button by grabbing the tab over the button and pulling it out.
- ⓘ it will not come out if the button is not depressed.
- Remove both metal sheets. when its at an angle, push it in a little and then pull it up so that it is pointing straight up. then, you can push it through.

To reassemble your device, follow these instructions in reverse order.