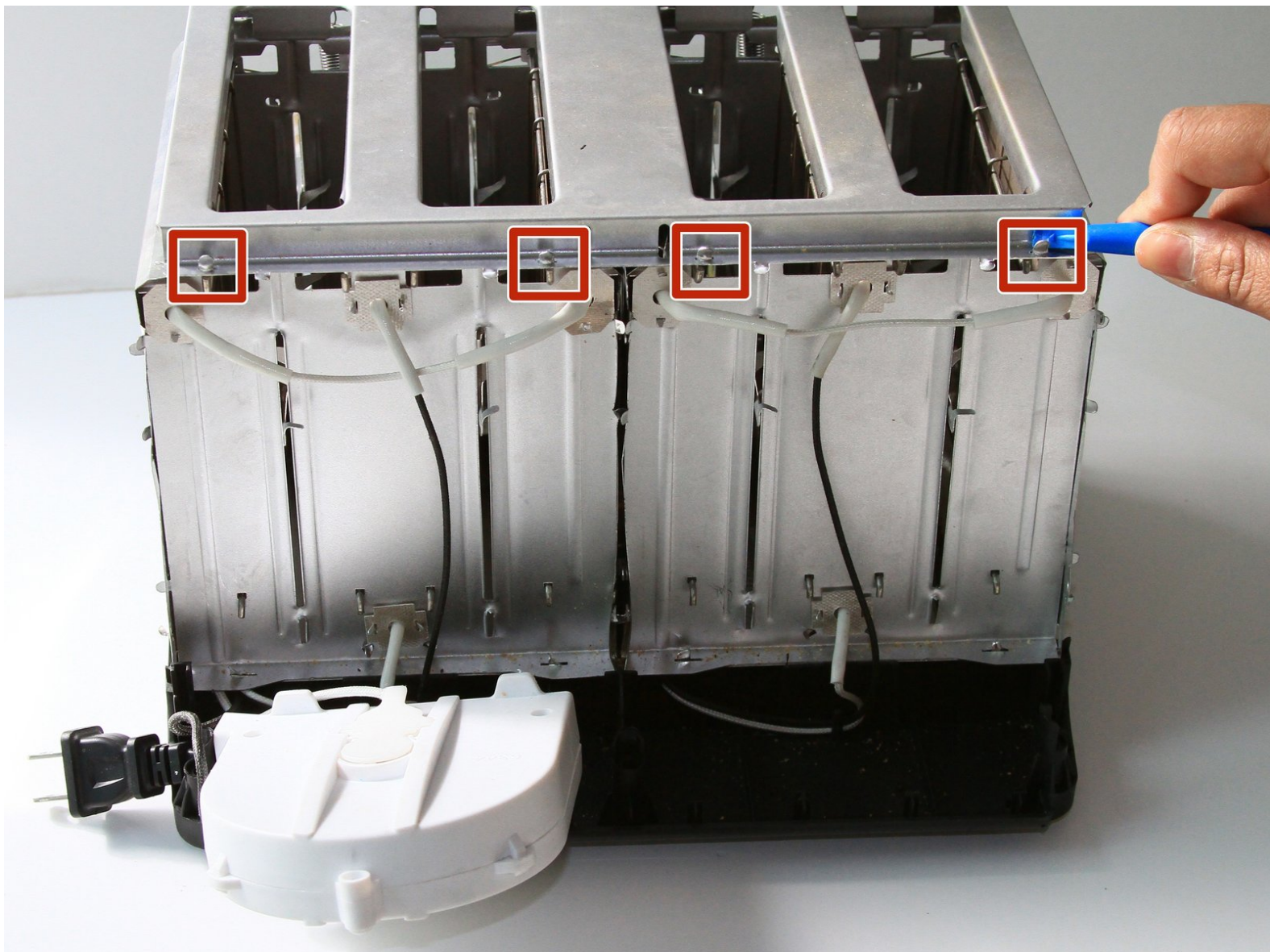




Oster 3905 Lever Spring Replacement

Replace the springs on the toasting levers to prevent the levers from popping back up.

Written By: Sydney Alcaraz



INTRODUCTION

This guide will show you how to replace the lever springs on your Oster 3905 toaster.



TOOLS:

- [Phillips #2 Screwdriver](#) (1)
 - [JIS Driver Set](#) (1)
 - [Metal Spudger](#) (1)
 - [iFixit Opening Tools](#) (1)
-

Step 1 — Slot Levers



- Firmly grip your hand around the slot lever.

Step 2



- Stabilize the toaster by placing your hand on top.

Step 3



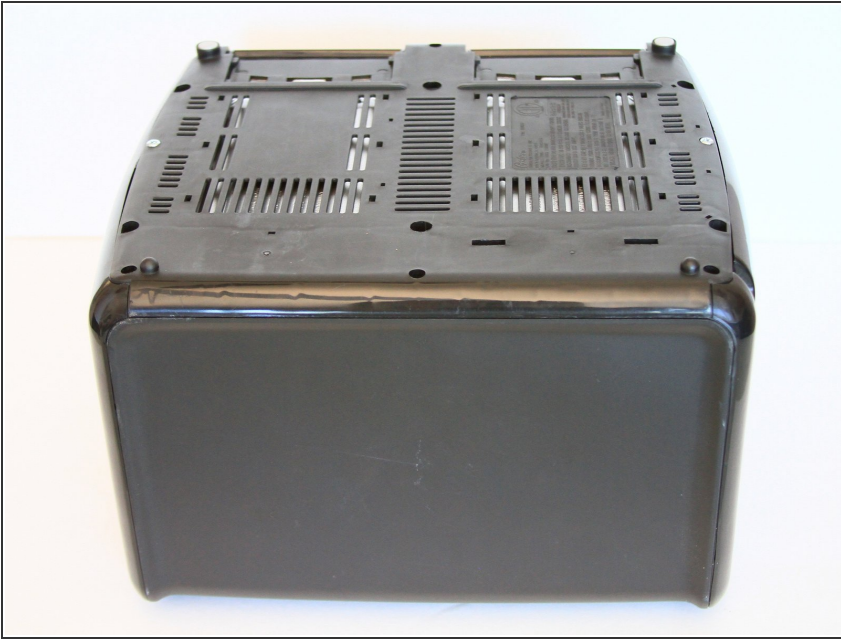
- Forcefully pull the slot lever away from the toaster by keeping parallel to the table.

Step 4



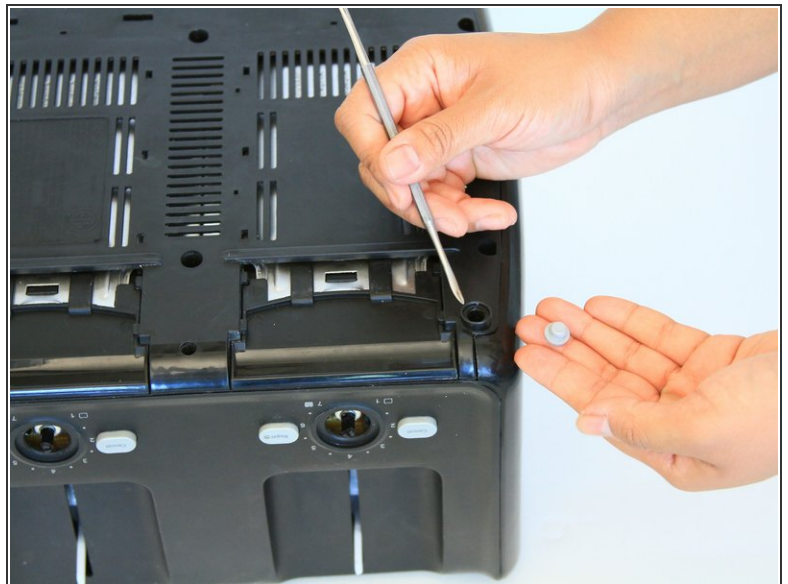
- Both slot levers can be removed.

Step 5 — Outer Shell



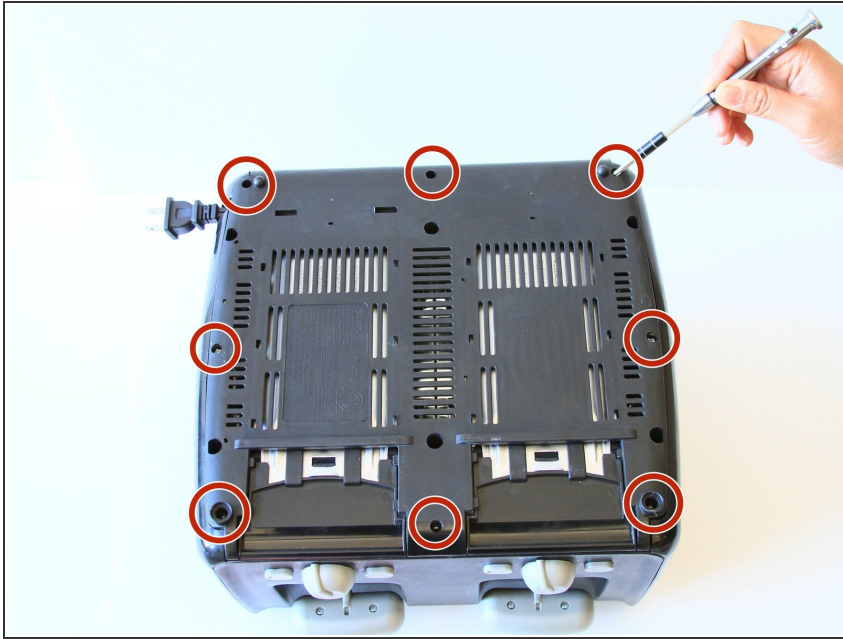
- Place the toaster upside down so the bottom is facing the ceiling.

Step 6



- Take off both rubber feet using a small metal spudger.
- Wedge a spudger under the feet and pull up to pop off.

Step 7



- Use a PH#2 screw bit to remove eight 12mm screws that are located around the perimeter.
- ⓘ There are two screws under the rubber feet.

Step 8



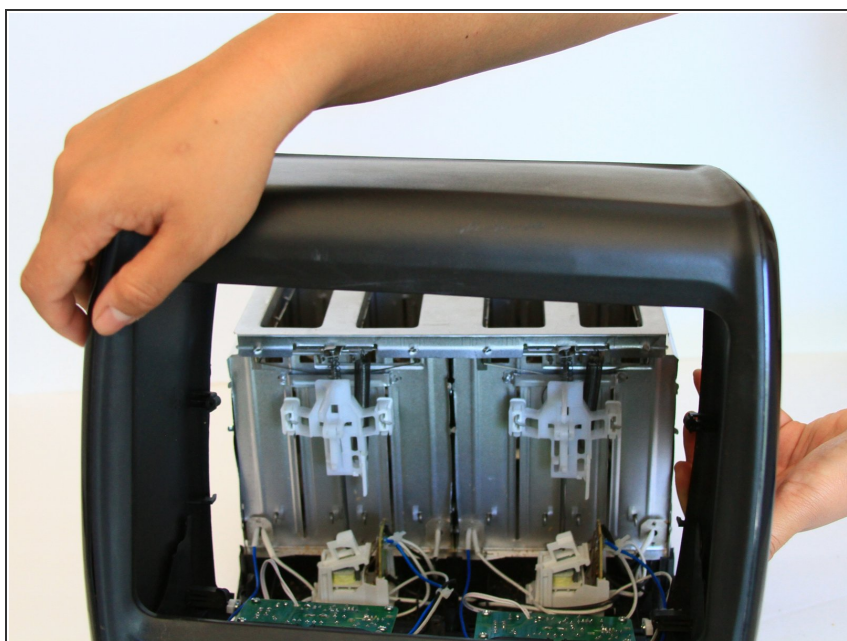
- Place the toaster right side up.

Step 9



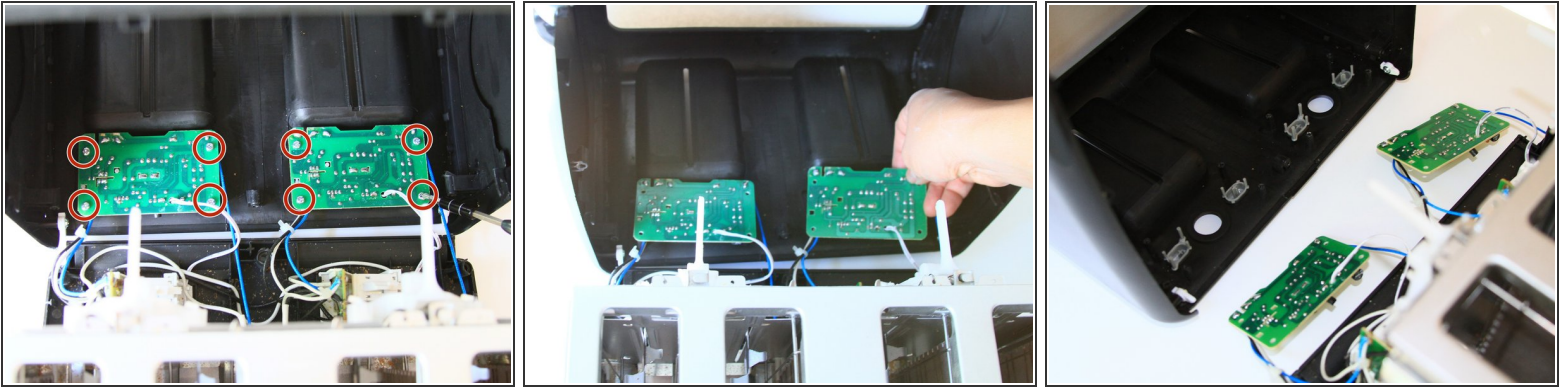
- Grab the outer shell firmly and pull up towards the face of the toaster.

Step 10



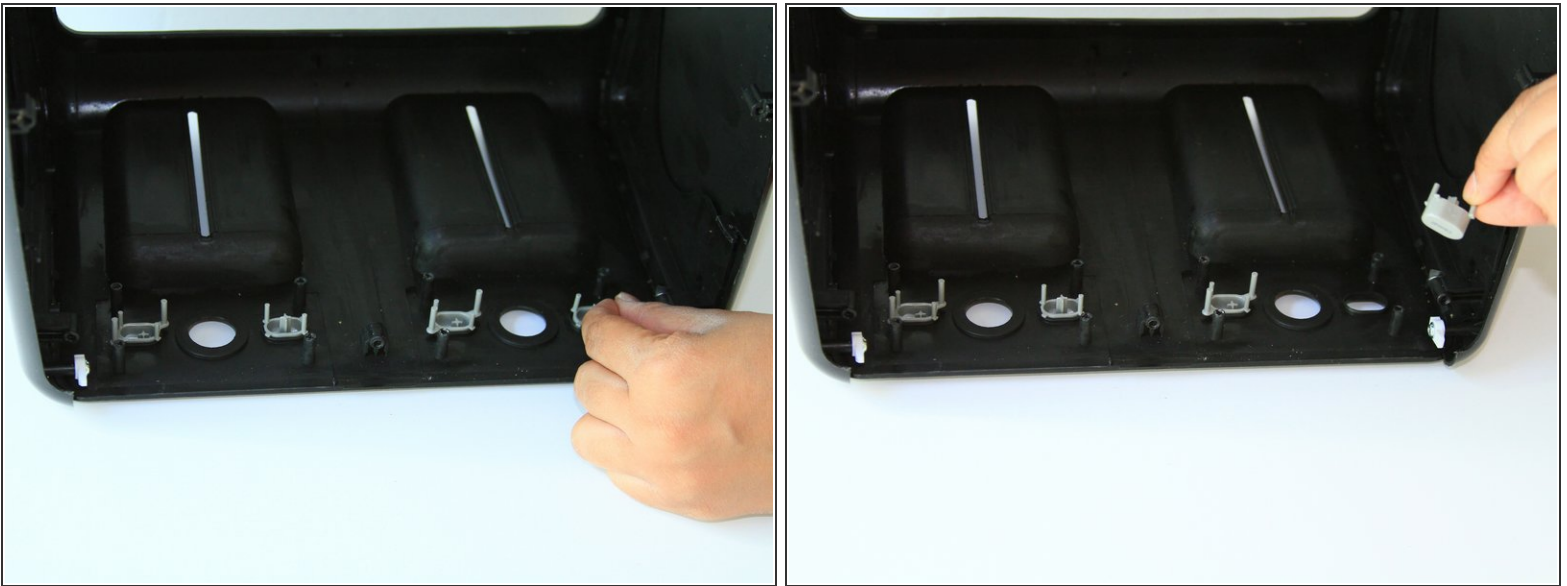
- For this part, you might need to wiggle the toaster to get the outer shell off.
- ⓘ The shell will not completely come off until the motherboard is removed in the next step.

Step 11



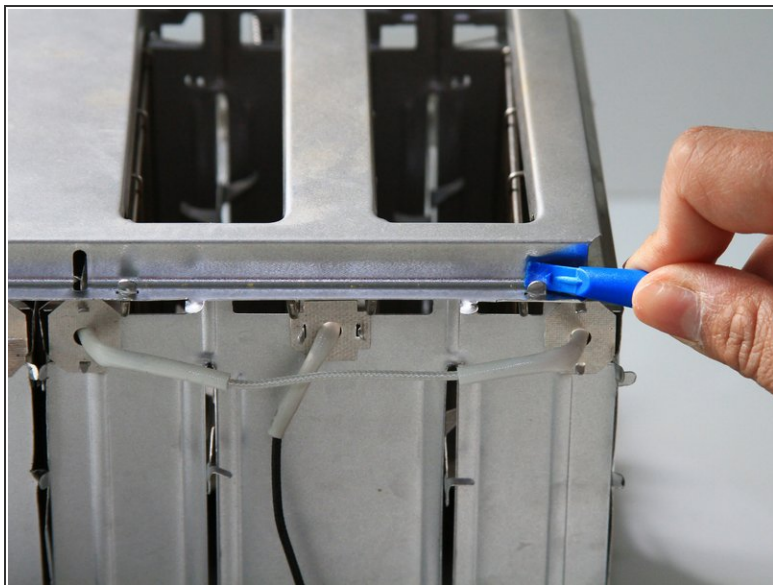
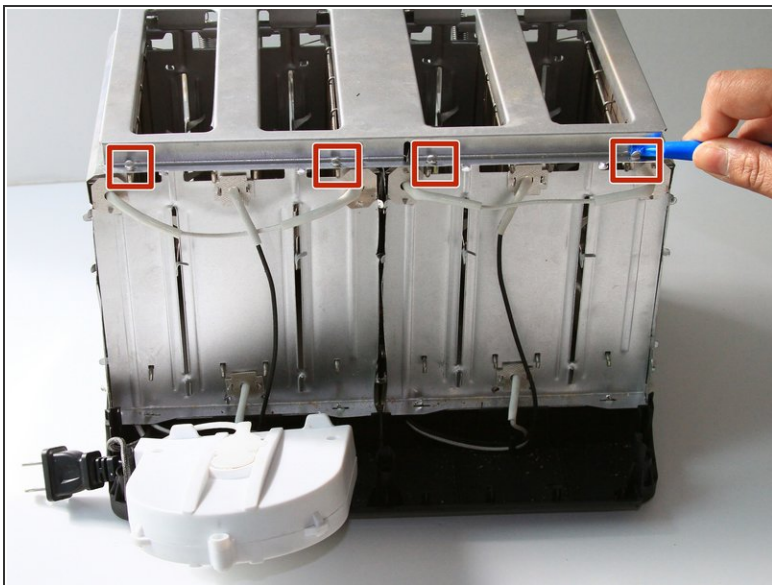
- Use a J1 screw bit to unscrew eight 8mm screws from the motherboard.

Step 12



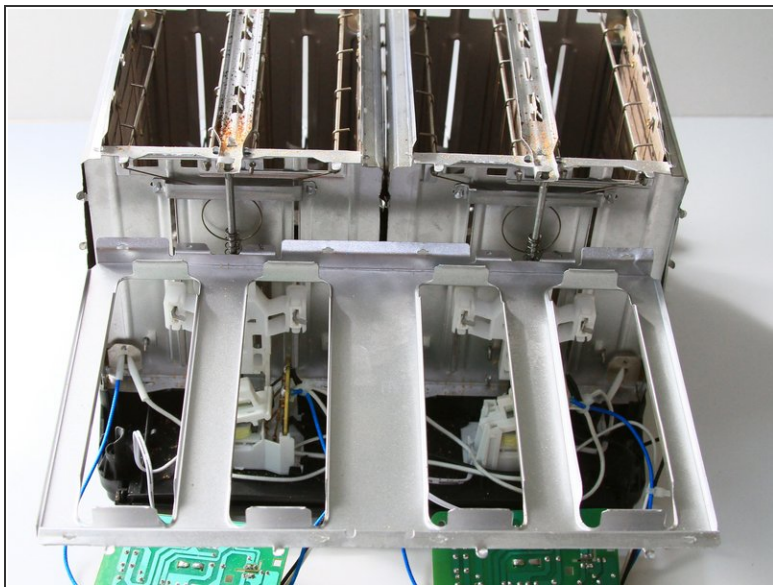
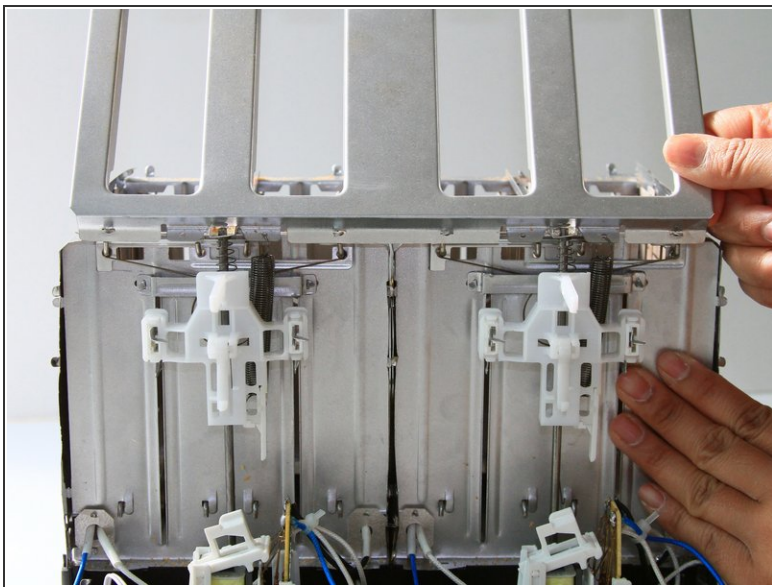
- Take out the grey “cancel” and “bagel” buttons from the shell.

Step 13 — Lever Spring



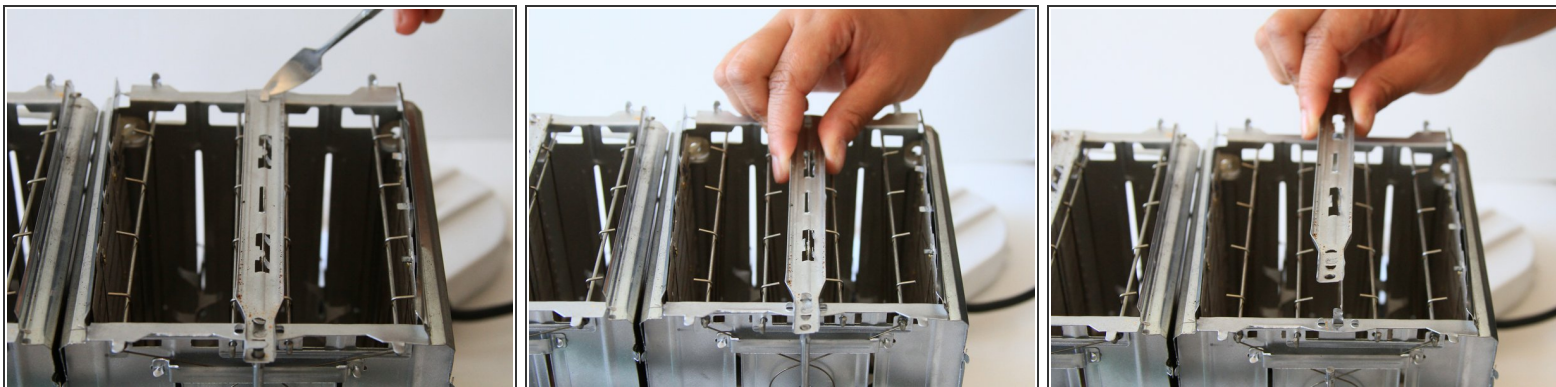
- Use the plastic opening tool to remove the top metal panel by prying the 4 top metal tabs upwards. They will be able to slide through the openings and be pulled upwards.

Step 14



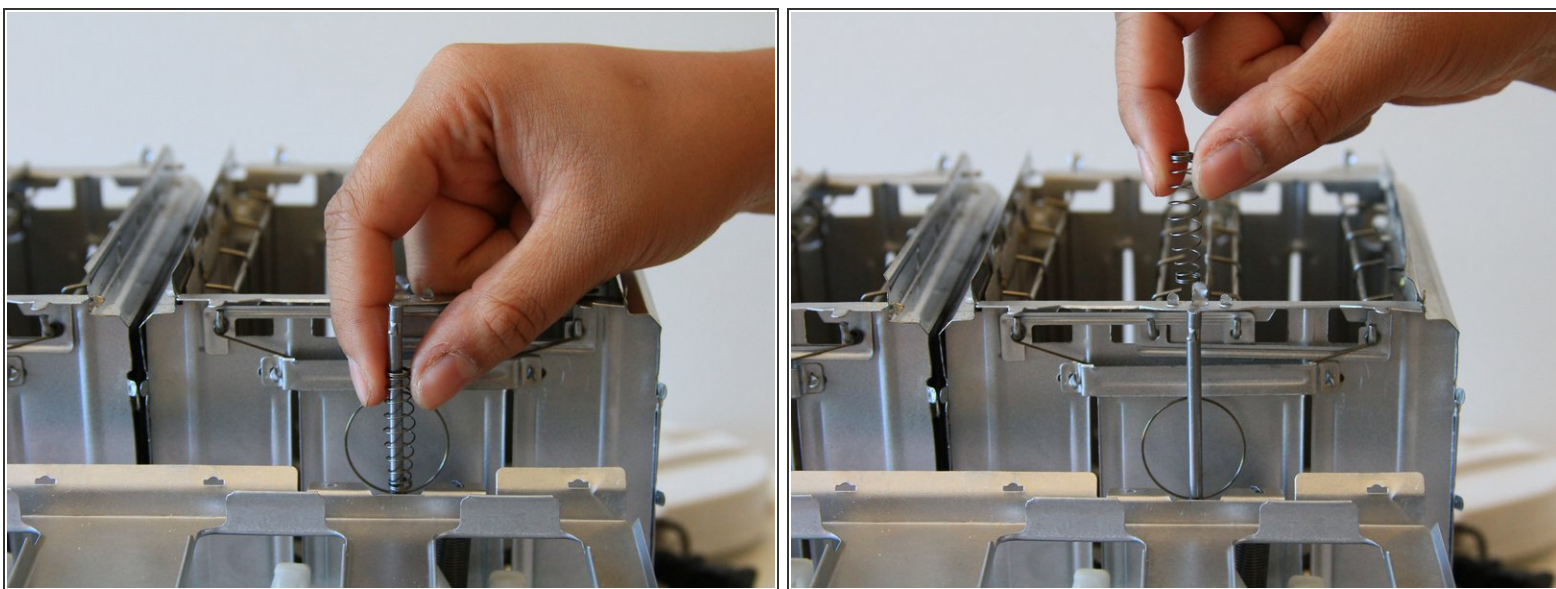
- Once the top metal panel is unhooked, lift and let it hang off the side of the toaster.

Step 15



- Use a metal spudger to pry the 8 tabs upwards along the metal that separates the two slots.
- Pull the metal spacer upwards to release from the toaster.

Step 16



- Remove the spring wrapped around a metal rod at the front of the toaster, located behind the white plastic lever holder.

To reassemble your device, follow these instructions in reverse order.