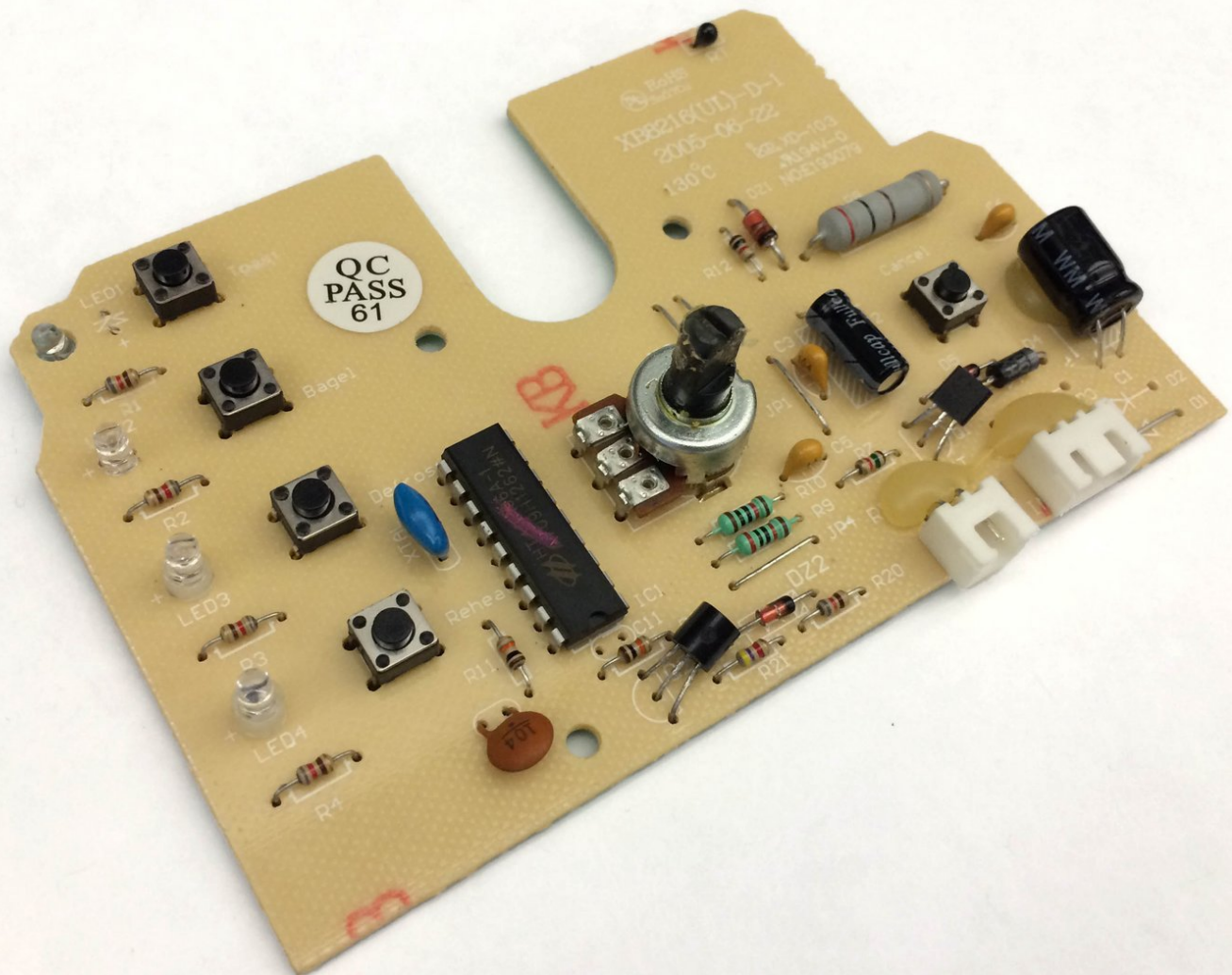




Oster 6329 Circuit Board Resistor Replacement

This guide will show you how to replace a damaged component on the toasters circuit board.

Written By: Timothy Grijalva



INTRODUCTION

This guide requires that you know how to solder components and identify which component needs to be replaced.



TOOLS:

- [Phillips #1 Screwdriver](#) (1)
 - [Soldering Workstation](#) (1)
-

Step 1 — Outer Shell Removal



- Using the Phillips-head #2 screwdriver, unscrew the three 1cm Phillips-head screws on the plastic base of the toaster to separate the outer metal shell from the plastic base.

Step 2



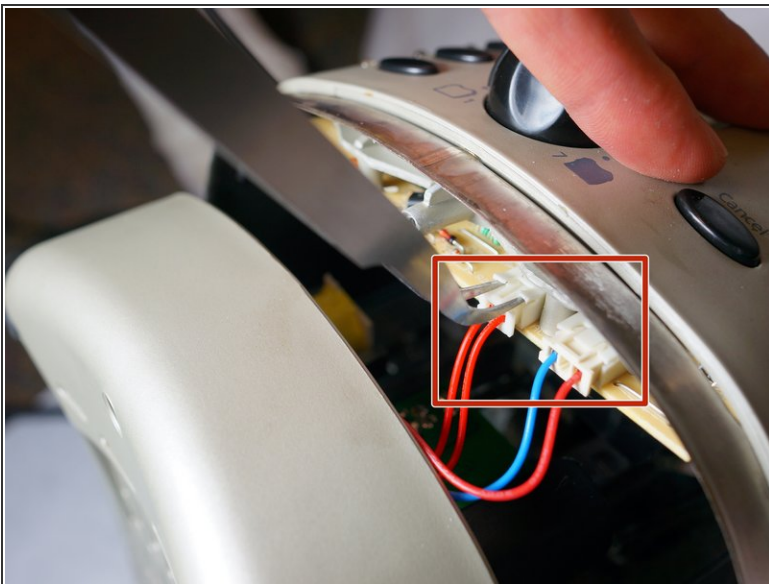
- Push the plastic push-down handle down and pull the plastic handle straight from metal arm.

Step 3



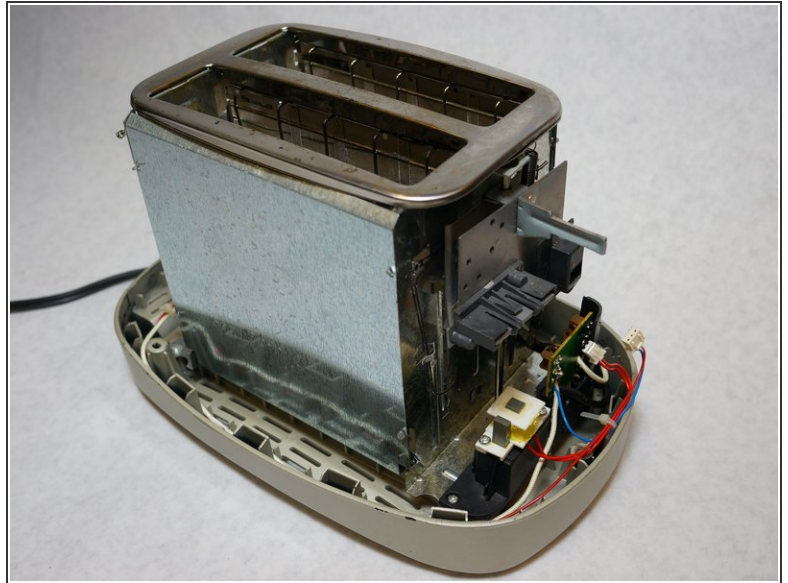
- Loosen the outer metal shell from the plastic base by holding the plastic base while pulling up on the metal shell.
- ⓘ Only lift the outer shell a little so as not to disconnect the cables that connect the circuit board.

Step 4



- Disconnect the cable clips from the circuit board using the tweezers to free the outer metal shell from the plastic base.

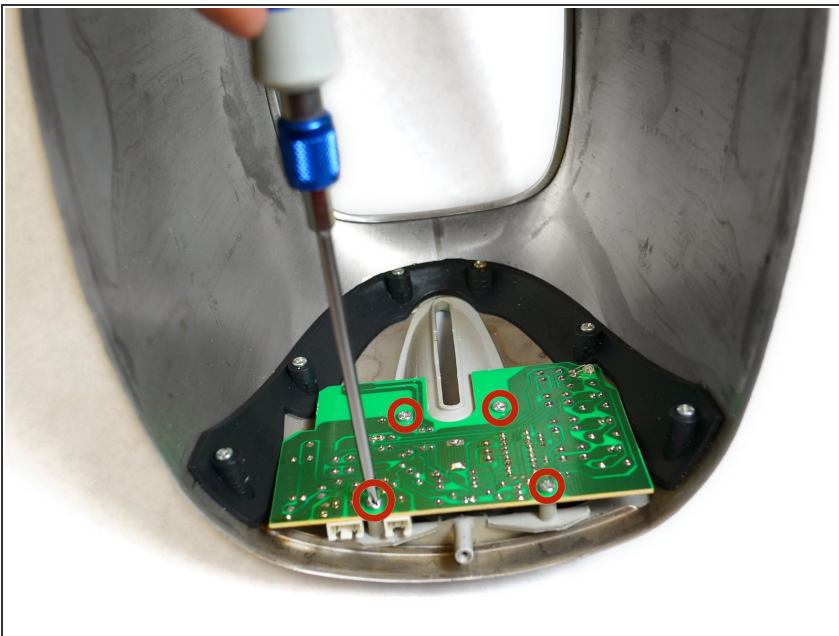
Step 5



- Lift the top outer metal shell.

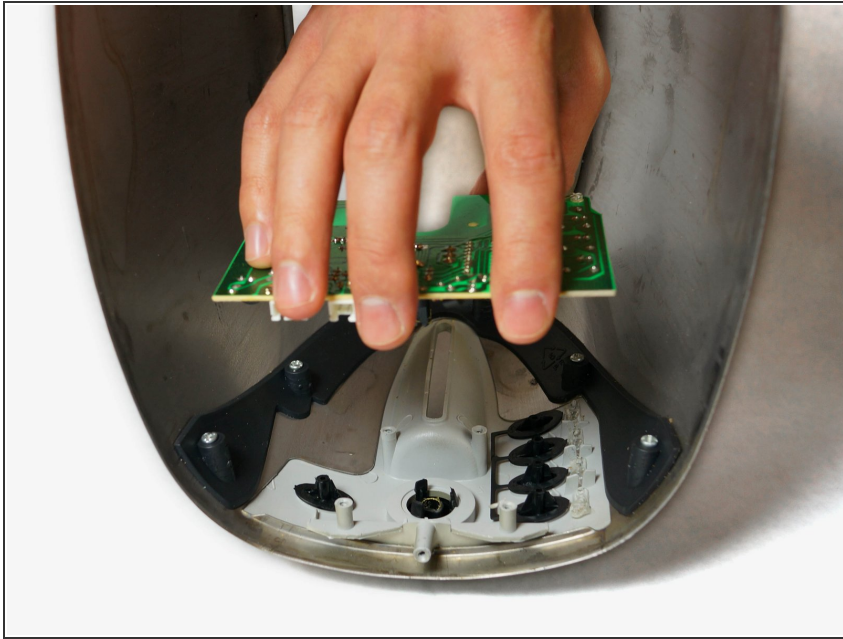
⚠ Carefully lift the outer metal shell at an angle so as not to damage the components in the front of the toaster.

Step 6 — Circuit Board Resistor



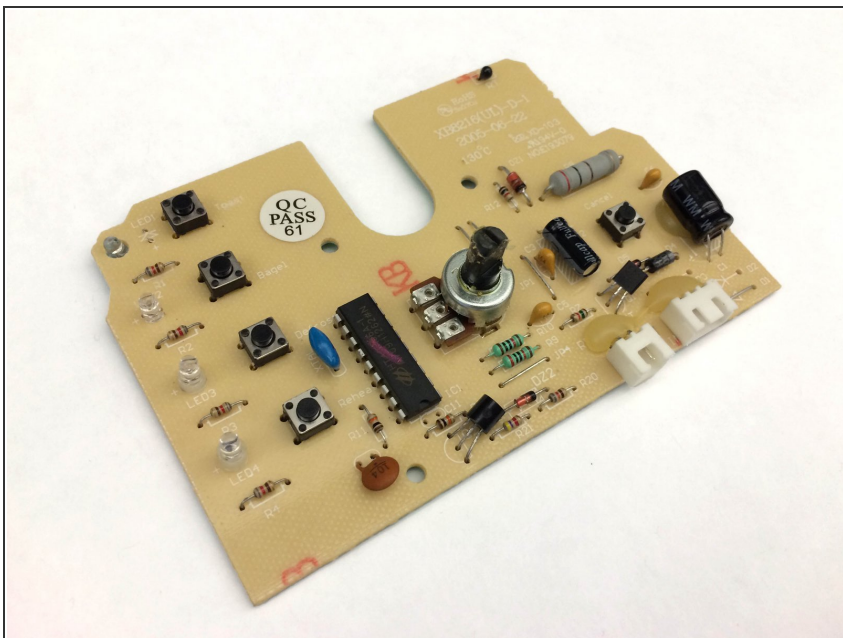
- Using a #1 phillips head screwdriver, remove the four 1cm philips head screws holding the circuit board to the inside of the toaster shell.

Step 7



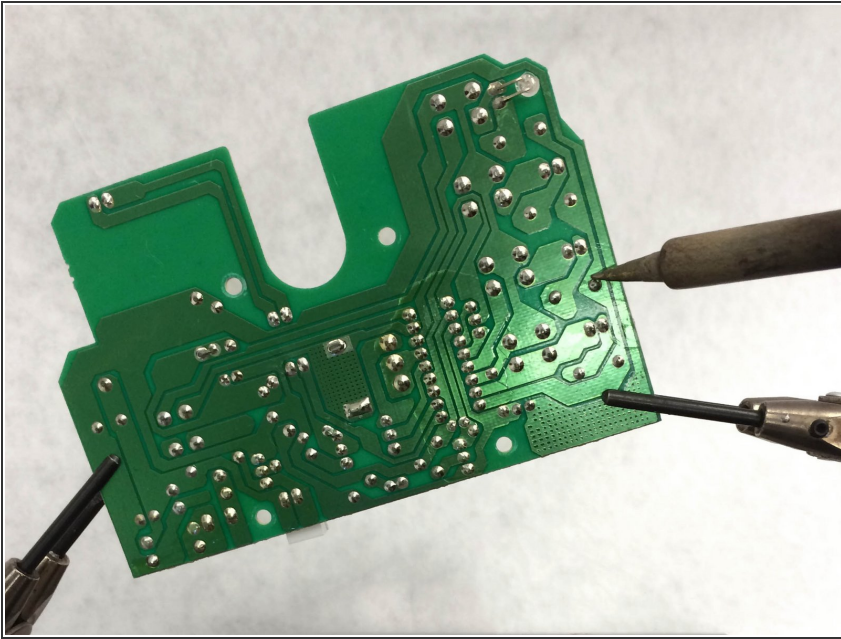
- Grasp the circuit board and pull on it perpendicular to the attached surface.

Step 8



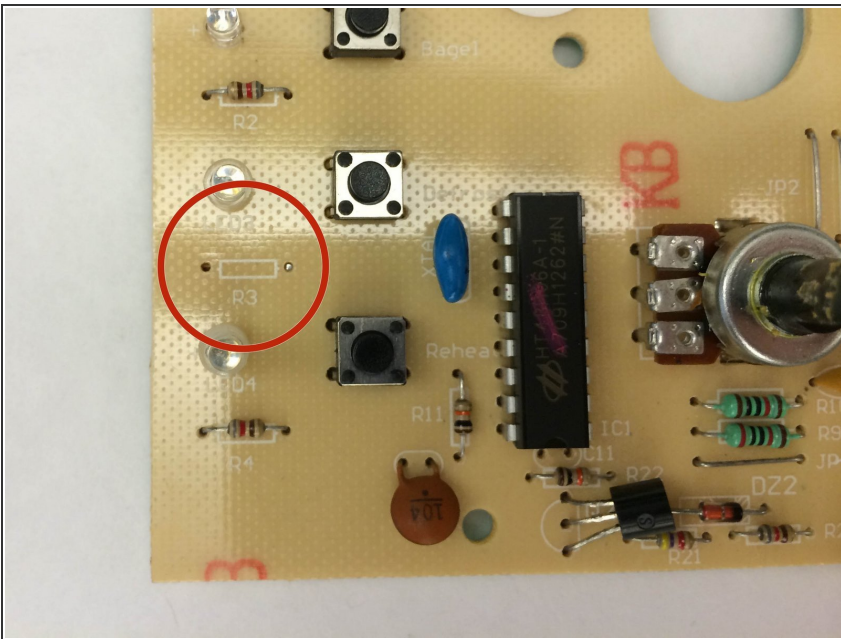
- Inspect the circuit board for any burnt or otherwise damaged components. Be sure to carefully identify the damaged components that need replacement. For help identifying resistor values look at [wikipedia's electronic color code article](https://en.wikipedia.org/wiki/Electronic_color_code).

Step 9



- Use the soldering kit to unsolder the damaged component. For soldering Instructions look at the [iFixit Soldering Guide](#).

Step 10



- Once the damaged component has been unsoldered from the circuit board, remove it.

To reassemble your device, follow these instructions in reverse order.