



# Oster Expressbake CKSTBRTW20 Inner Chamber Replacement

Replace the inner cooking chamber to bring your breadmaker back to breadmaking glory.

Written By: Megan Saunders



# INTRODUCTION

The inner cooking chamber may get dirtied or broken with use. This guide will show how to remove the inner chamber in order to properly replace it.



## TOOLS:

- [Phillips #1 Screwdriver](#) (1)
  - [grounding strap](#) (1)
  - [Spudger](#) (1)
-

## Step 1 — Top Panel Removal



- Remove the bread pan.

## Step 2



- Remove the eight 22mm Phillips #1 screws from the grey lining.
- Remove the grey liner.

## Step 3



- Remove the two 11mm Phillips #1 screws from the back of the device.

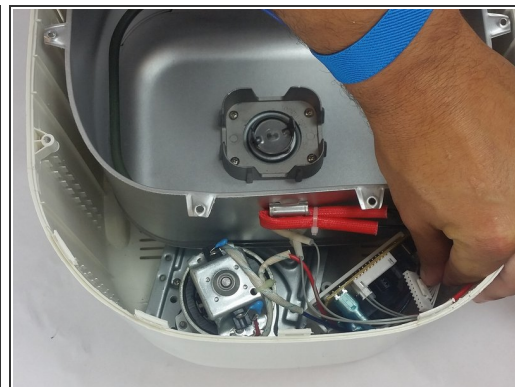
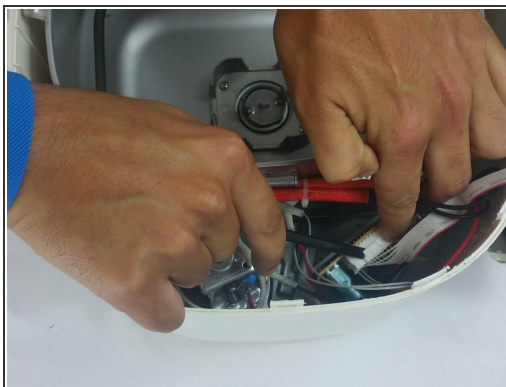
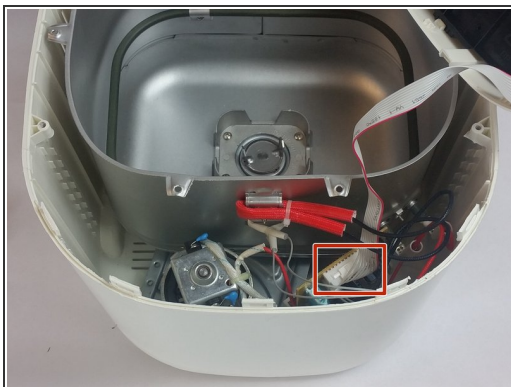
## Step 4




- Pop off the top case using a spudger.
- i Keep the spudger away from the control panel.
- ⚠ Be aware of wires connecting the microcontroller to the panel when removing the top lining.



## Step 5 — Inner Chamber



- Disconnect microcontroller and top lining.

 Ground yourself prior to disconnecting in order to avoid harming the inner electronics.

## Step 6



- Remove the four 11mm Phillips #1 screws holding from the guard and inner lining.
- Remove small rectangular guard from bottom of liner

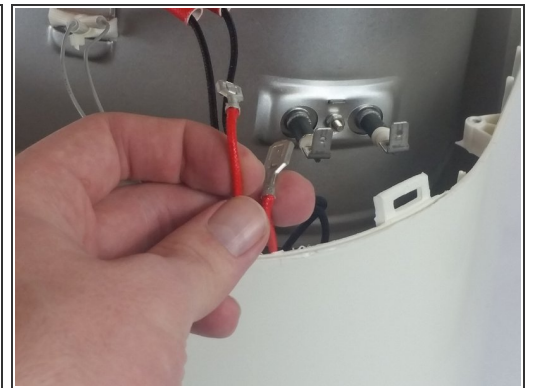
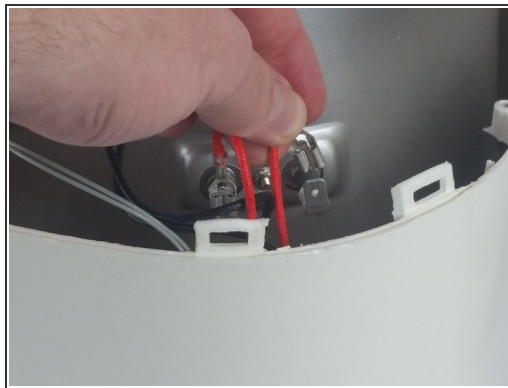
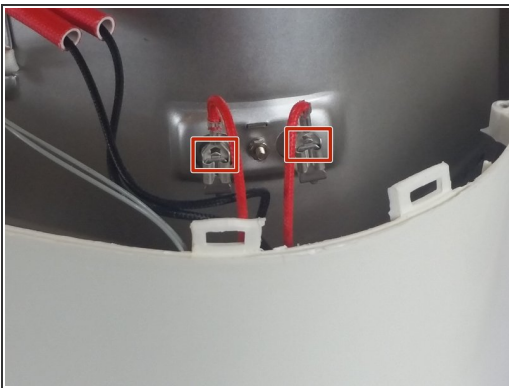
## Step 7



- Remove the inner liner.

**i** The inner liner will be connected to the outer chamber with wires.

## Step 8



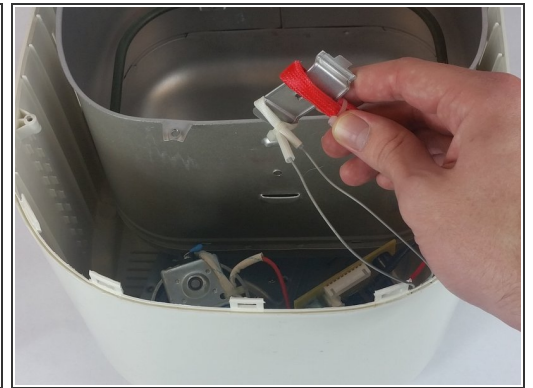
- Disconnect the red wires from the inner liner.

## Step 9



- Remove the single 11mm Phillips #1 screw that's holding the inner lining in place.

## Step 10



- Use a spudger to push out the connector found on the inner lining.



## Step 11



- Remove lining.

To reassemble your device, follow these instructions in reverse order.