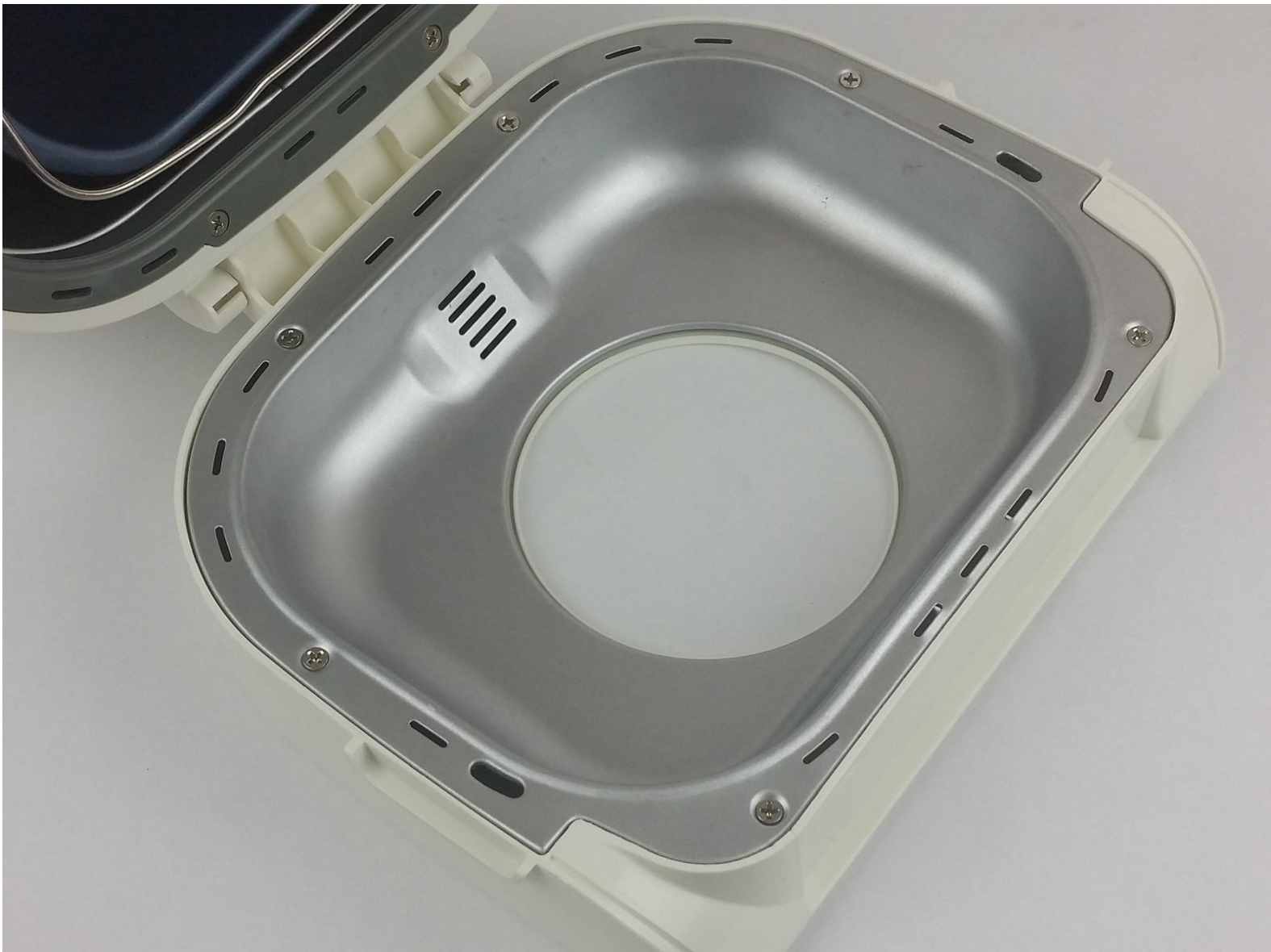




# Oster Expressbake CKSTBRTW20 Top Viewing Glass Replacement

If you find yourself unable to view your Expressbake Bread Maker cooking your bread, you may need to replace the viewing glass.

Written By: Megan Saunders



---

## INTRODUCTION

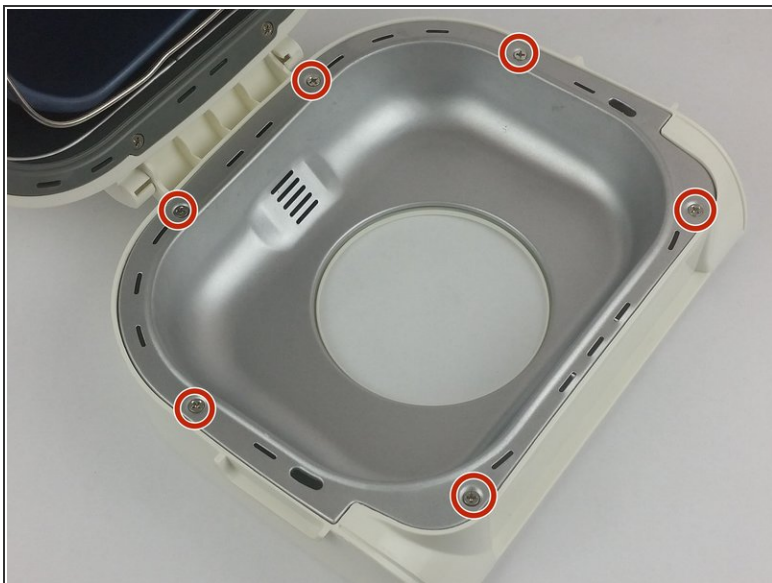
The top viewing glass may get cracked or broken through time. This guide will show how to remove the inner panel in order to replace the viewing glass.

---

### TOOLS:

- [Phillips #1 Screwdriver](#) (1)
-

## Step 1 — Top Viewing Glass



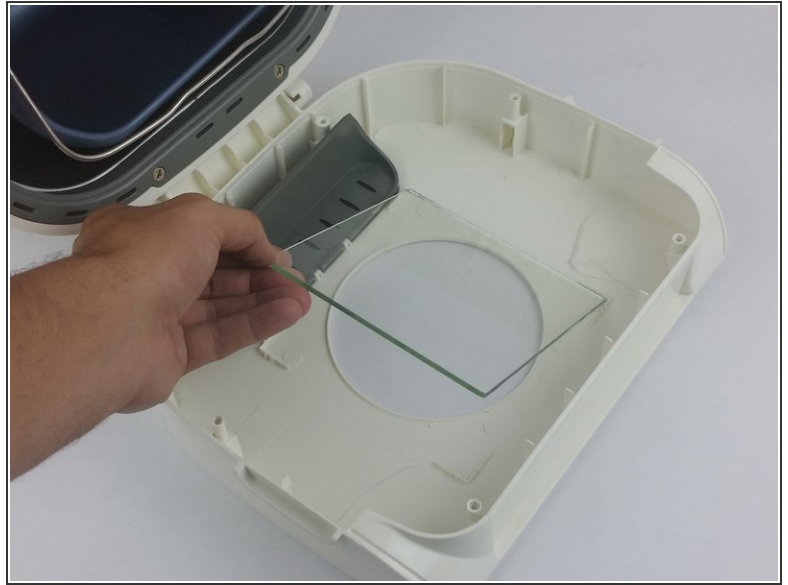
- Remove the six 55.4mm Phillips #1 screws from the top panel.

## Step 2



- Lift the inner lining away from the device.

## Step 3



- Remove the viewing glass and replace.

To reassemble your device, follow these instructions in reverse order.