



Oukitel K10000 MAX Teardown

Result: SIM Card stuck The first steps of the disassembly give you access to most of the components (including the battery, vibration motor, camera, etc.)

Written By: Steve Muller

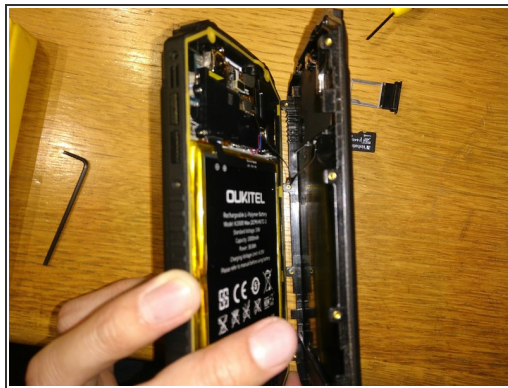


Step 1 — Oukitel K10000 MAX Teardown



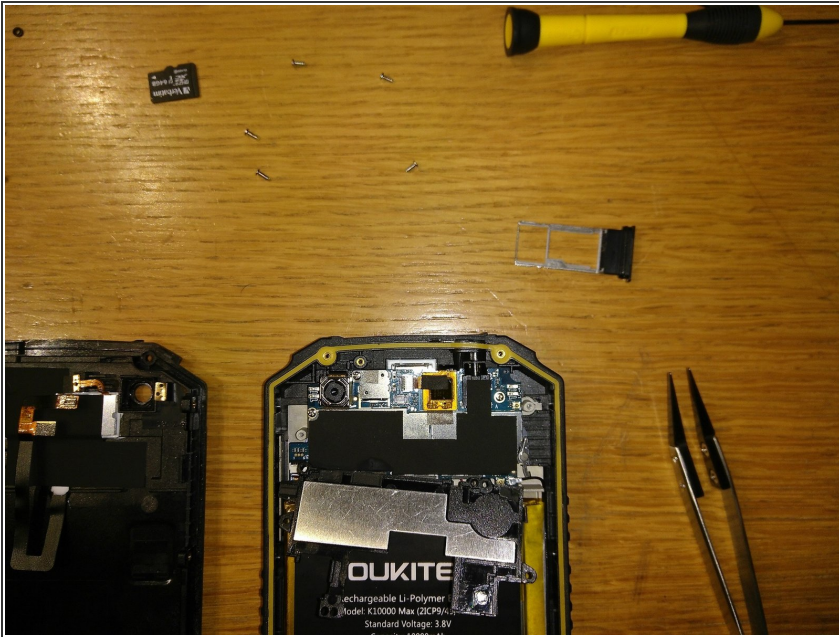
- Unscrew 8 side screws (flat 2.4mm or dedicated torx), then of the 4 rear screws (hex 1.5mm).

Step 2



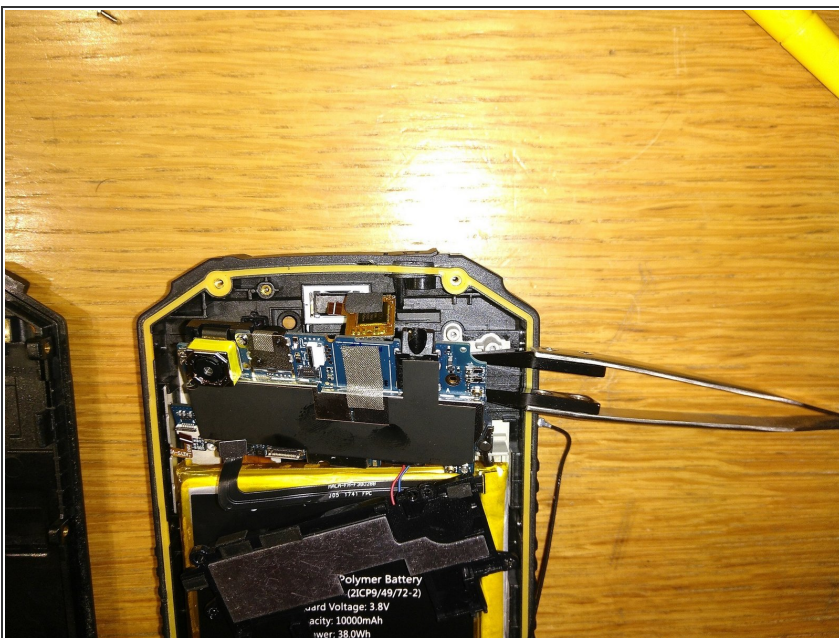
- Remove the front of the phone, disconnecting the LED connector.

Step 3



- Remove the 5 screws (Phillips #0) on the black support.
- Remove the black support.

Step 4



- remove the 3 screws (Phillips #0) supporting the PCB.
- Disconnect the antenna on the right.
- Disconnect the ZIF connector on the left.
- Disconnect the ZIF connector at the top.
- Disconnect the two connectors (battery) at the bottom.

Step 5



- Withdraw the jammed SIM card.

To reassemble your device, follow these instructions in reverse order.