



Written By: Andrew Optimus Goldheart



## INTRODUCTION

Discover the Ouya: "a new kind of game console." This Android-powered system is the first of its kind. It's specifically designed to be open to professional and amateur game designers alike, with free software development tools included with every console.

Full disclosure: The folks at Ouya [tout](#) this to be "the first totally open video game console." They have so much confidence in the Ouya, in fact, that they sent us a retail unit to take apart. Game on, folks.

Join us as we take them up on their offer and delve deep into the hardware that powers this little device.

Tired of being the last to hear? Catch all of our teardowns as soon as they hit the wire by following us on [Twitter](#) and [Facebook](#)!



### TOOLS:

- [iFixit Opening Tools](#) (1)
  - [2 mm Hex Screwdriver](#) (1)
  - [Phillips #1 Screwdriver](#) (1)
  - [Soldering Iron](#) (1)
-

## Step 1 — Ouya Teardown



- With a price tag of just \$99, we weren't expecting the Ouya's hardware to have ten-core processors and eight bajillion gigs of RAM. The price-appropriate tech specs are as follows:
  - Nvidia Tegra 3 processor
  - 1 GB of RAM
  - 8 GB of internal storage (expandable via USB)
  - Wi-Fi and ethernet connectivity
- Included along with the Ouya is a single Bluetooth-enabled gamepad.
- Rumor has it that two vowels, who wish to remain anonymous, felt left out in the Ouya naming process. One of the jilted letters is even quoted as saying, "This is an outrage. Y isn't even a real vowel." Y has yet to be reached for comment.

## Step 2



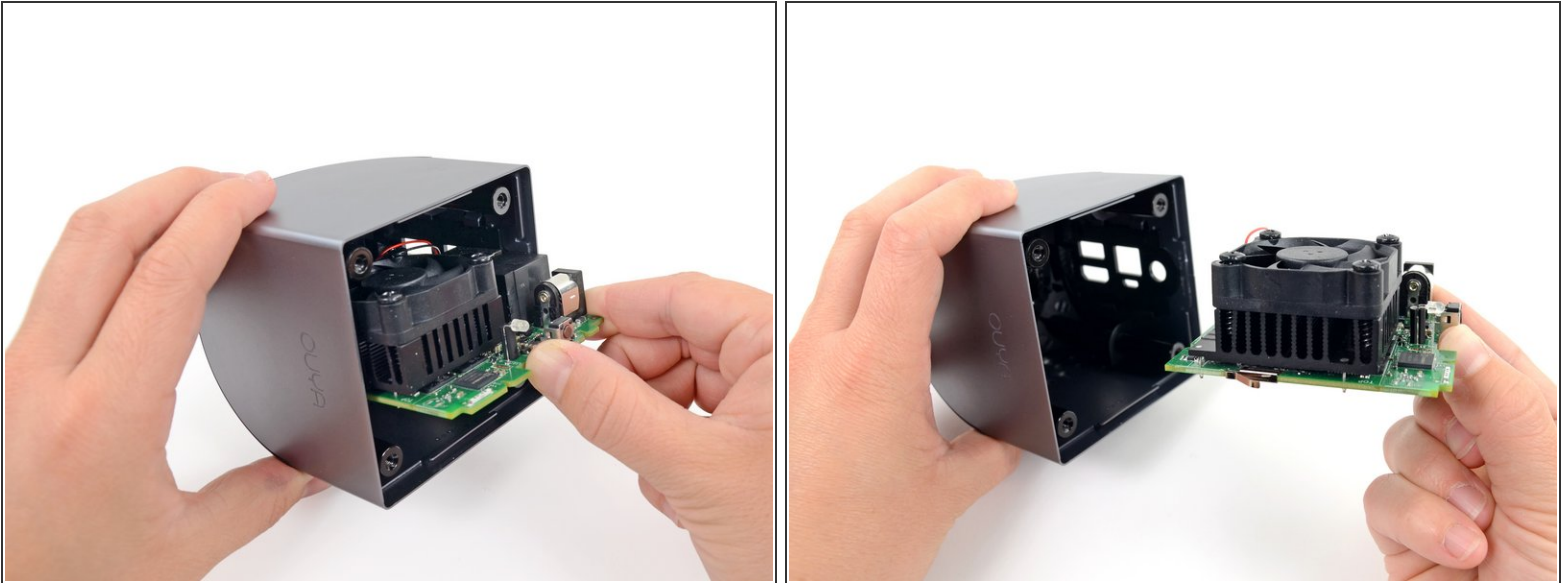
- The right side of the console is engraved with "The Angel List." This list includes the usernames and backer numbers of people who contributed \$10,000 or more to the development cost of the Ouya.
- ⓘ "The Angel List" is only engraved on the first production run of consoles.
- The back side of the Ouya is bedecked with several ports:
  - DC-In power
  - Micro-USB
  - Ethernet port
  - HDMI port
  - USB 2.0 port

## Step 3



- The top panel comes off without a hitch after removing the Hex (screws, that is).
- Inside, we find a very clean and simple layout. The motherboard, I/O ports, and fan are tucked into the console as a single assembly.
- In the center of the device there's a lone LED, presumably the beacon of hope or indicator of repair, as we've seen in [other devices](#).

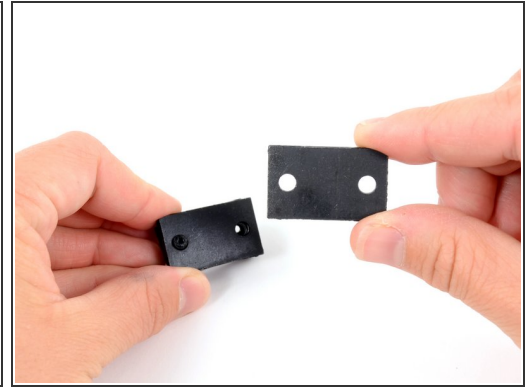
## Step 4



- Extracting the motherboard/fan assembly simply requires pulling it away from the case assembly.
  - This *incredibly difficult* process requires about 10 seconds and two fingers, meaning [Mickey Mouse](#) could do it with 6 fingers to spare! We can confirm that this device is mouse-friendly!
- ⓘ A small spring-loaded contact on the side of the motherboard appears to have been included for some extra grounding.

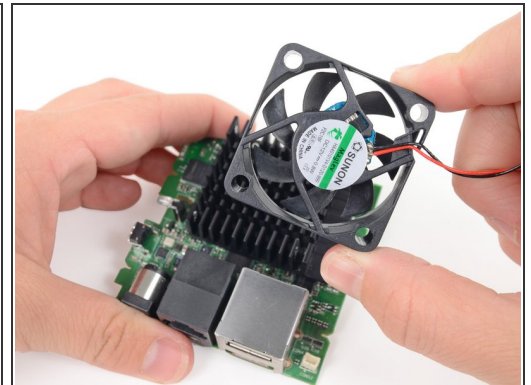
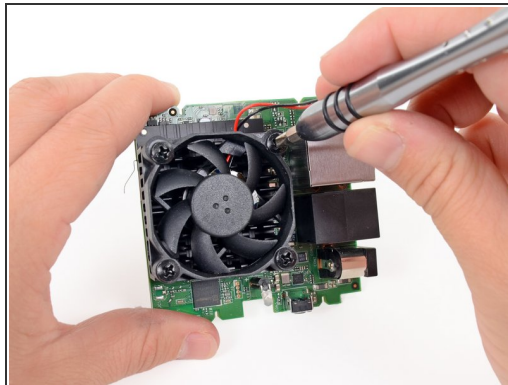
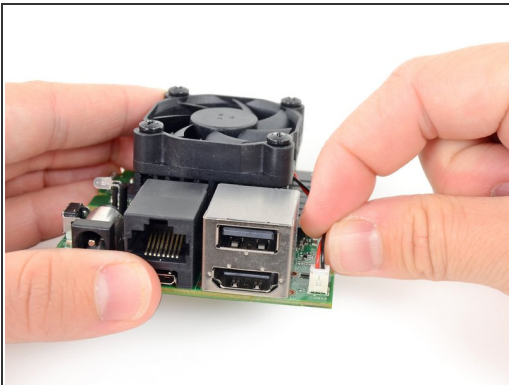


## Step 5



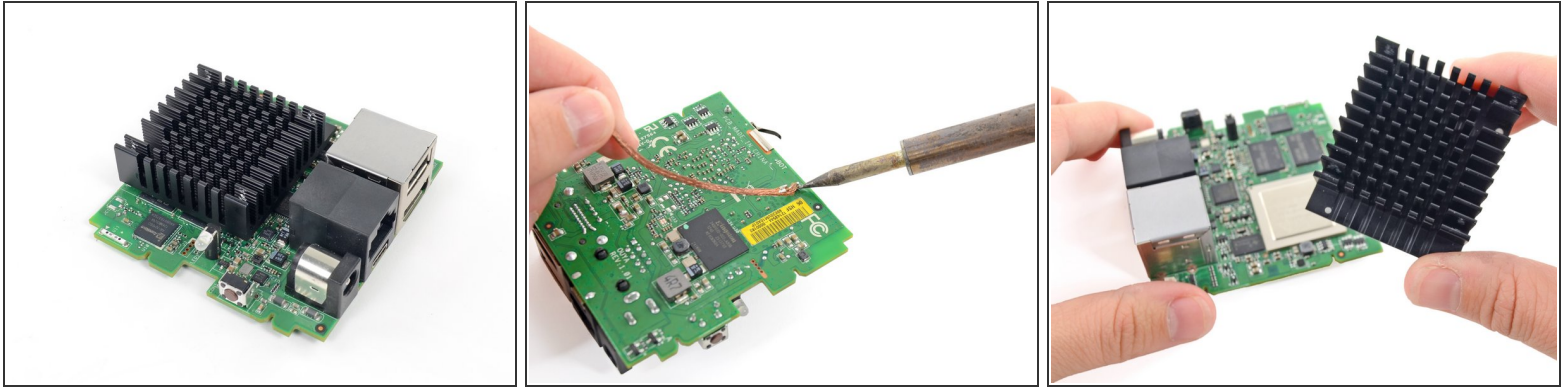
- A Phillips #1 screwdriver frees five small weights from the bottom of the case.
- It's rare that we see a design that intentionally adds weight. Unlike cell phones or tablets, which need to be light and mobile, the Ouya needs bulk to stand up to the cables on the back.
- Each hunk of metal weighs 0.39 ounces, adding nearly two ounces of bottom-heavy staying power to the diminutive console.

## Step 6



- The fan is the only modular, easily-removed component in the box—which is fortunate, as it's also the only moving component, subject to wear.
- Also fortunate is how easy it is to remove—four Phillips screws and a plug later and we've got it out for closer inspection.
- This SUNON MagLev [HA40101V4](#) DC brushless fan is rated for 12 volts at 0.8 W.
- The fan's a standard, off-the-shelf part, so you can easily replace it if it kicks the bucket. Bo *ouya*

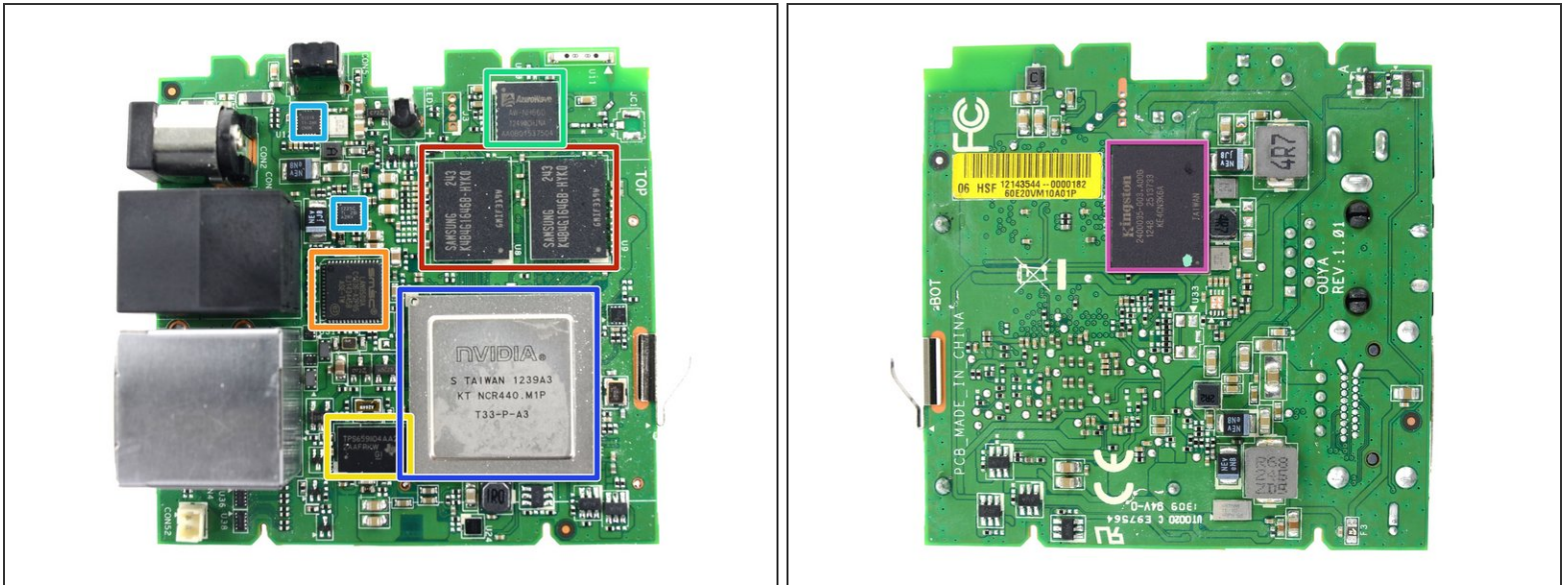
## Step 7



- With the fan out of the way, we're (temporarily) slowed in our journey to the center of the Ouya—the heat sink is soldered in place, obscuring the processor.
  - ❗ According to an Ouya engineer, solder was chosen over clips for mechanical strength, as they were (rightfully) worried about such a small console being knocked around or dropped. Soldering the heat sink to the motherboard proved a much tougher design, better at surviving drop tests.
- No trouble for us, we pulled out our trusty [soldering iron](#) and [desoldering wick](#) and quickly freed the heat sink.



## Step 8



- Prominent ICs on the front and back of the motherboard:
  - Two Samsung [K4B4G1646B](#) 4 Gigabit DDR3 SDRAM modules (for 1 GB total)
  - SMSC [LAN9500A](#) Hi-Speed USB 2.0 to 10/100 Ethernet Controller
  - Texas Instruments [TPS659110](#) Integrated Power Management Unit
  - AzureWave AW-NH660 Wi-Fi/Bluetooth 4.0 module, based on Broadcom [BCM4330](#)
  - Texas Instruments [TPS51216](#) Buck Controller for DDR2/3/3L and [TPS51225](#) Dual Step-Down Controller with 5V and 3.3V LDOs
  - Nvidia [T33-P-A3](#) Tegra 3 Multi-Core CPU
  - Kingston [KE4CN3K6A](#) 8 GB eMMC (eMMC integrates a NAND flash memory and a controller chip in a single package)

## Step 9



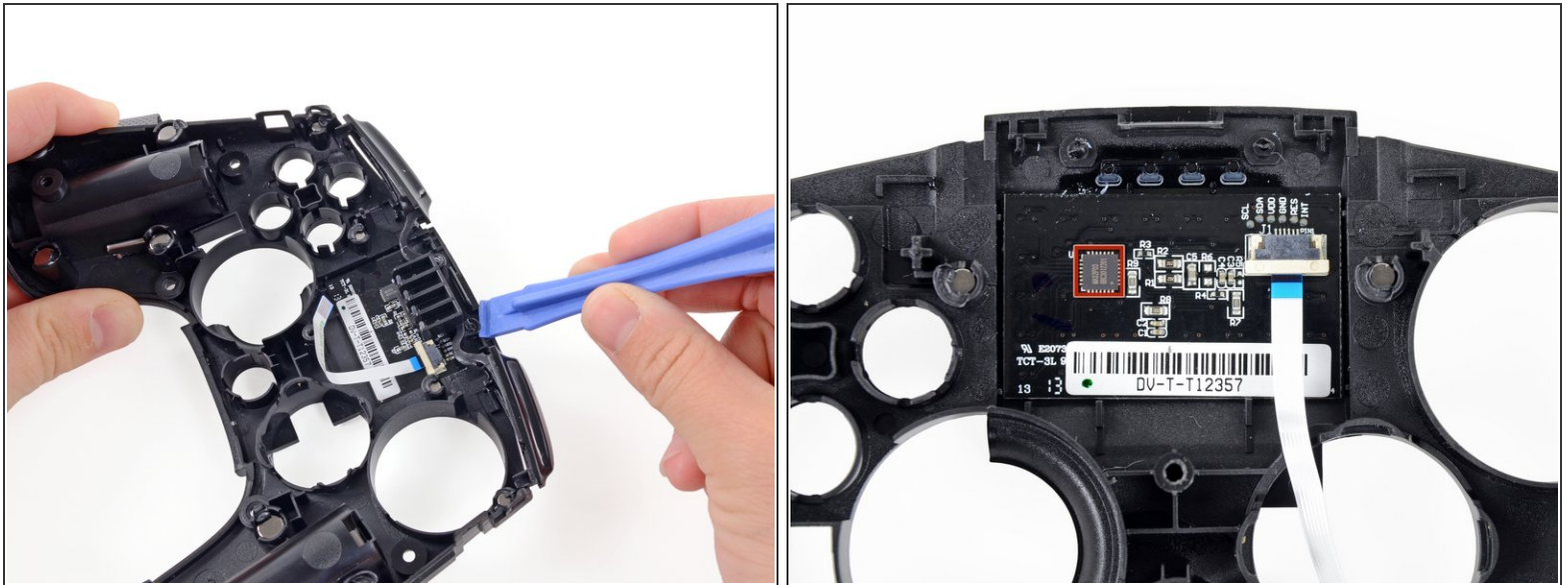
- With the momentum of a manatee listening to dubstep, we [just couldn't stop](#) ourselves after the console. We had to move on to the controller.
- The controller is outfitted with 15 buttons, two analog sticks, and a capacitive touchpad.
- Two pieces of the top casing of the controller easily separate from the body, no tools required—convenient for dropping in fresh batteries (2 x AA) when you're running low.
- We blow past a few Phillips screws and crack open the controller.

## Step 10



- Inside the controller we find a stack of two circuit boards—the top hosts contacts for the directional pad and "[O, U, Y, A](#)" buttons, while the lower is home to the two analog joysticks.
- Noting that the device was named after the button configuration, as was decided based on feedback from the device's backers on Kickstarter, we took it upon ourselves to see what other devices would be named if they were to do the same:
  - Nintendo [Abstart CCCC](#)
  - Sega [Baxy](#)
  - Sony [RL Soxa](#)
- While we're here, let's pull those top-mounted buttons out of the casing so we can get a better look at the touchpad.

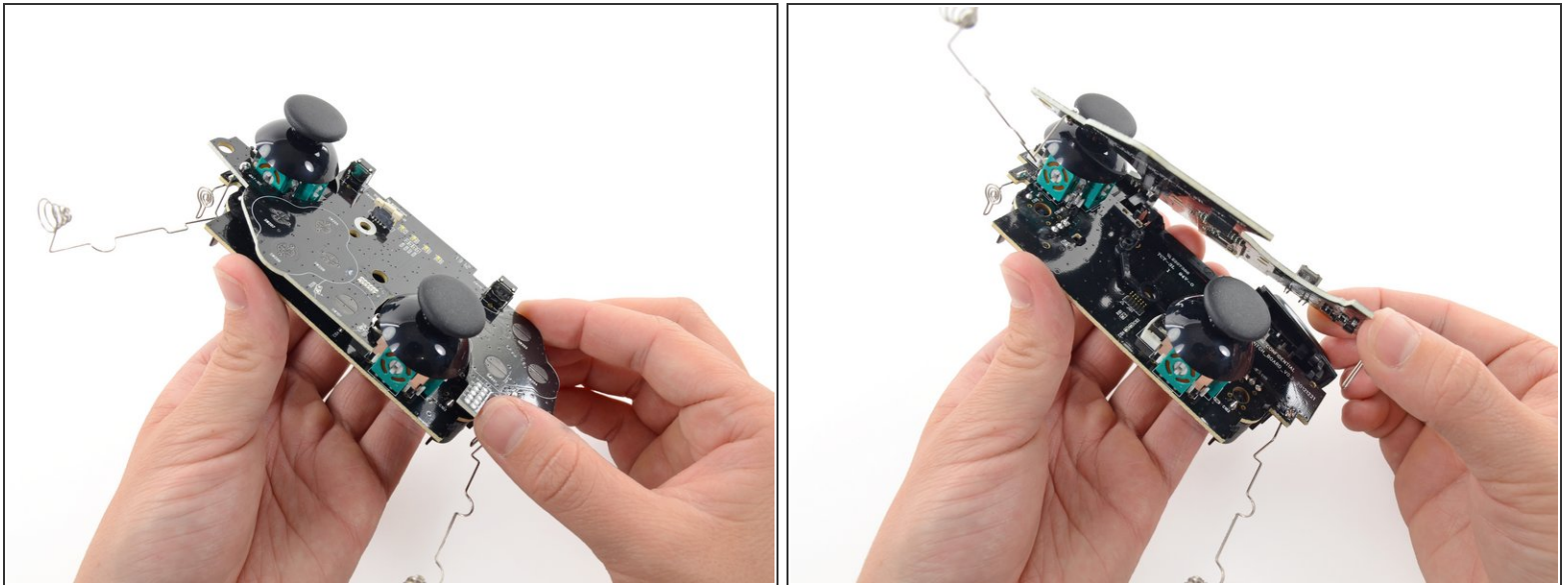
## Step 11



- After a bit of prying we remove the last pair of shoulder buttons and indicator LED light guide, exposing the underside of the controller's top casing.
- Strapped to the back of a 0.9" x 1.5" touchpad is a MA32P03 touchpad controller, providing 2D mouse tracking for the Ouya.

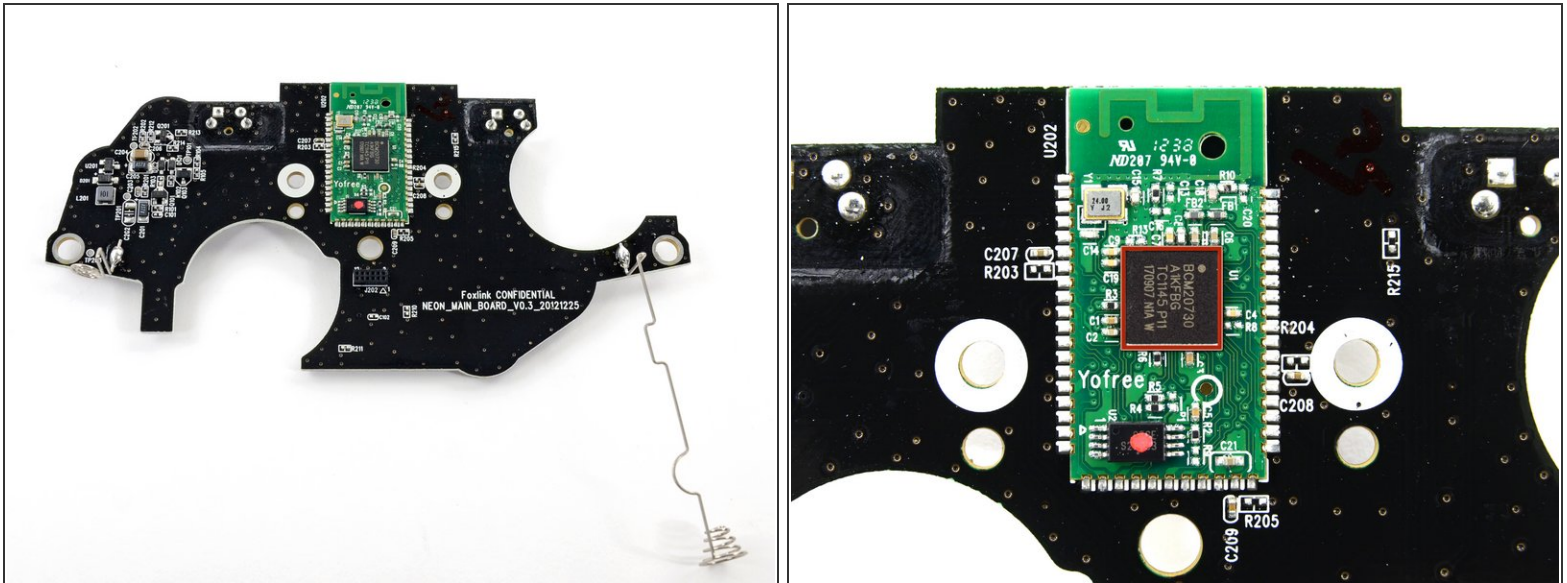


## Step 12



- Back to the PCBs: separating the two reveals their 12-pin connection, that carries power and data from the lower board's buttons and analog sticks up to the top board.
- Those springy wires waving about formed the battery contacts and are cleverly split up between the two boards.

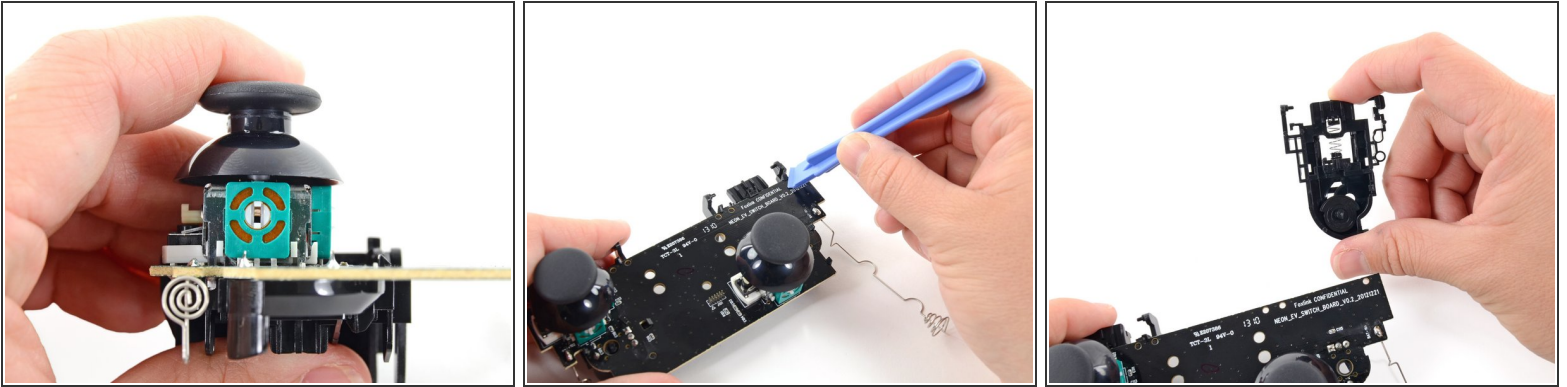
## Step 13



- Underneath the top button board, we find a lone IC, charged with running the entire controller.
  - The Broadcom [BCM20730](#) Bluetooth 3.0 transceiver features an integrated ARM Cortex M3 processor, capable of reading all of the button and joystick inputs and sending them off into the ether (or really, back to the Ouya console).



## Step 14



- On the lower PCB, we get a good look at one of the two analog joysticks. Its spring-loaded movement is tracked by two potentiometers that measure degrees of tilt in two axes.
  - ❗ Potentiometers are analog devices that vary their resistance with position—this makes for an ideal low-power sensor, as only a small amount of power is required to measure resistance.
- With a quick flick of a plastic opening tool, we release the plastic clips holding the shoulder buttons spring assembly in place.

## Step 15



## REPAIRABILITY SCORE:



- Ouya Repairability Score: **9 out of 10** (10 is easiest to repair)
  - The batteries are standard AA. Plus, they're easy to access and replace without tools.
  - Only standard-head screws are used (Phillips and Hex).
  - Many components are modular and simple to remove, making them easy and cost-effective to replace.
  - The heat sink is soldered in place, so if you need to replace the thermal pad, or repeated fan-swapping strips the threads, you'll need some soldering skills.
  - The joysticks are soldered to the circuit board, so if your button-mashing gets out of hand, you may need to replace the whole board.

To reassemble your device, follow these instructions in reverse order.