



Ozeri Pronto ZK14-S Panel Removal Replacement

Prerequisite only

Written By: AshleyKreisel





TOOLS:

- [2.0 Flathead screwdriver](#) (1)
-

Step 1 — Panel Removal



- Twist the plastic plate slowly to the left to pull it away.

Step 2



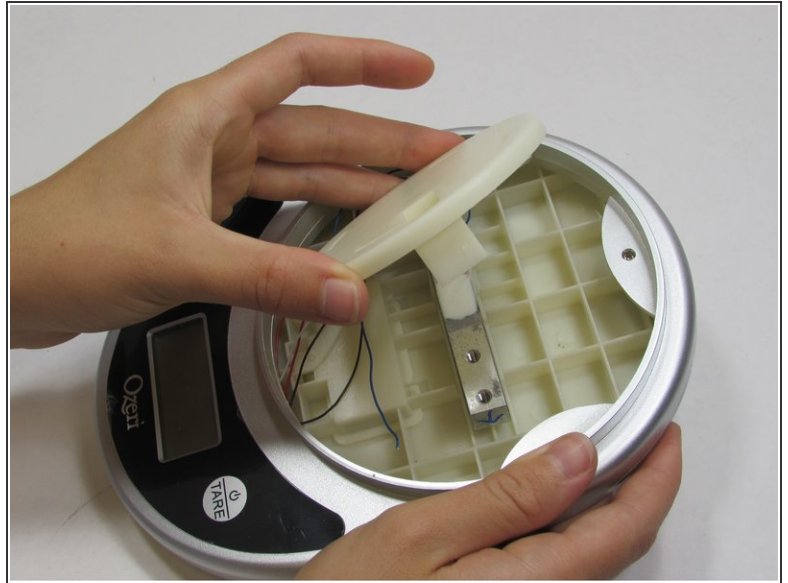
- Pry off the sticker at the bottom where the “Ozeri” logo is to reveal a screw. The sticker does not need to be completely removed for the next step.

Step 3



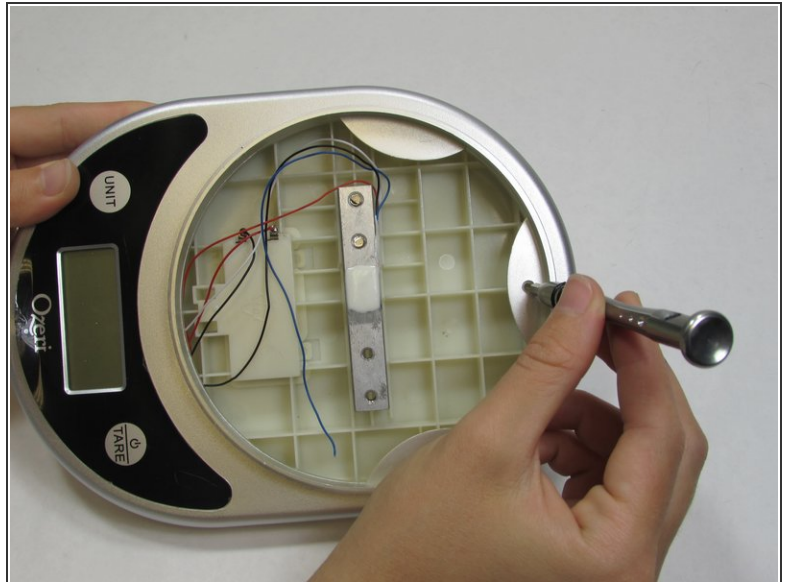
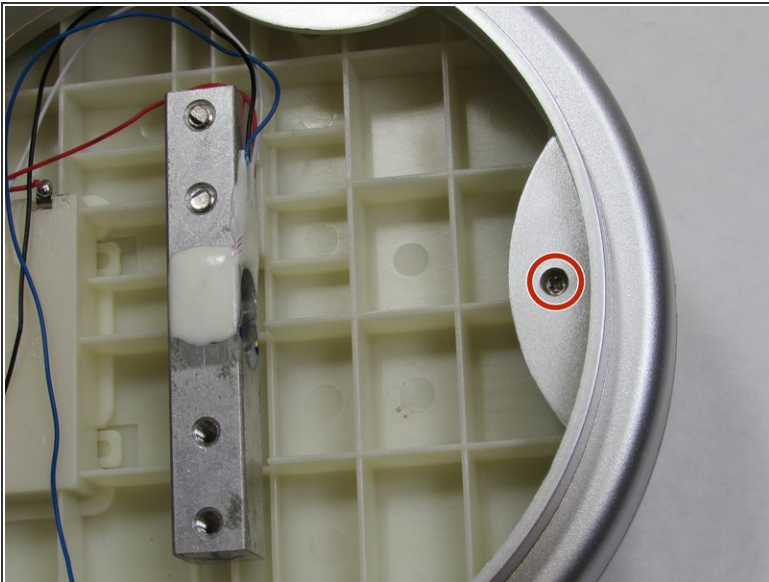
- Using the 2.0 Flathead screwdriver, remove the 9.50 mm Phillips head screw under the sticker.

Step 4



- Using the 2.0 Flathead screwdriver, remove the two 18.76 mm Phillips head screws in the plate stand.

Step 5



- Using the 2.0 Flathead screwdriver, remove the 9.44 mm Phillips head screw on the end opposite of the LCD screen.

Step 6



- Turn the device over so the back panel is facing up.

Step 7



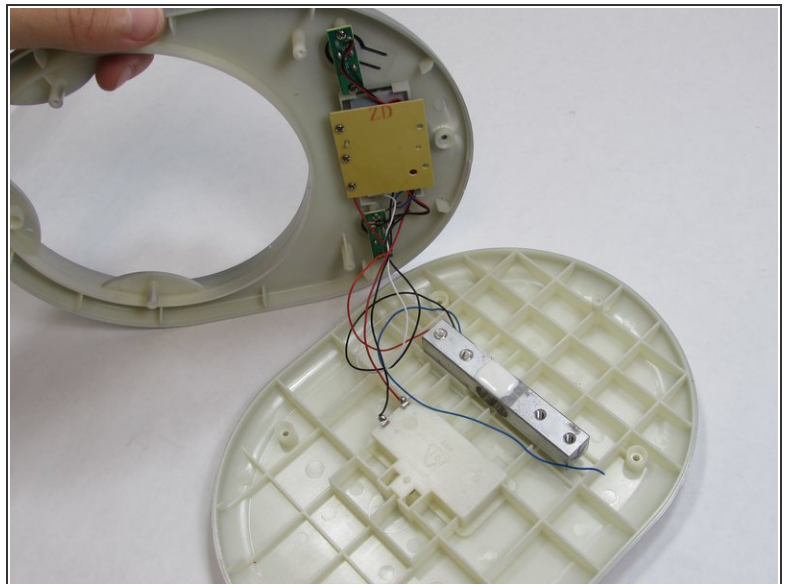
- Using the plastic opening tool, pry off each of the two rubber stubs on the right side and the two stubs on the left side of bottom of the device.

Step 8



- Using the 2.0 Flathead screwdriver, remove of the four 9.46 mm Phillips head screws under the removed stubs.

Step 9



- Pry apart the two panels to separate them from each other.
- Flip the device over so the LCD is facing up. Flip the front panel over on its side.
- ⚠ Be careful when separating the panels to avoid damaging the wires they are connected by.

To reassemble your device, follow these instructions in reverse order.