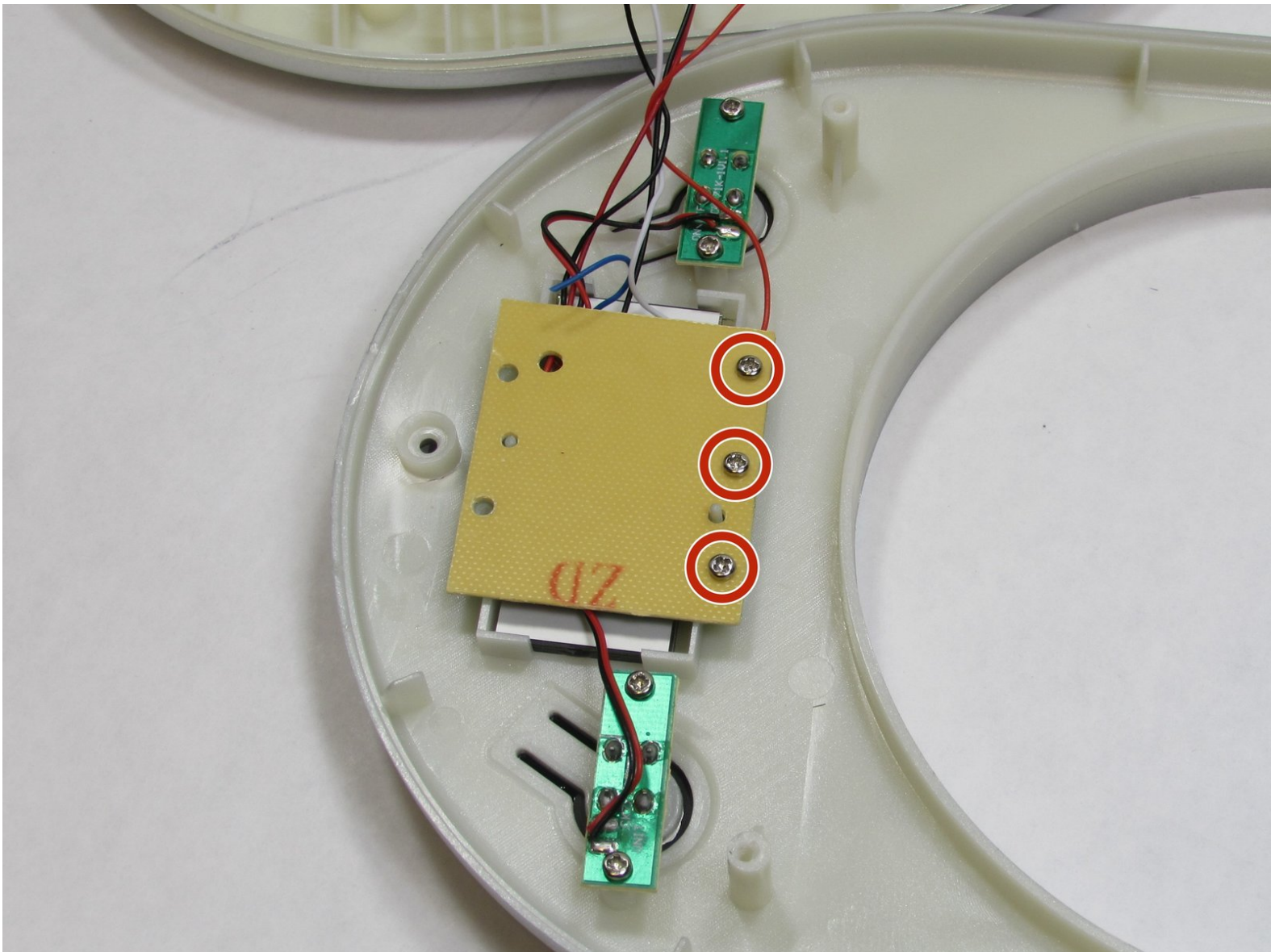




# Ozeri Pronto ZK14-S LCD Replacement

Replace the damaged LCD screen to view the measurements of the device.

Written By: Oneika White



---

## INTRODUCTION

This guide explains how to expose the LCD screen of the Ozeri Pronto ZK14-S. The detachment of the LCD motherboard is necessary to reveal the actual screen.

---



### TOOLS:

- [2.0 Flathead screwdriver](#) (1)
-

## Step 1 — Panel Removal



- Twist the plastic plate slowly to the left to pull it away.

## Step 2



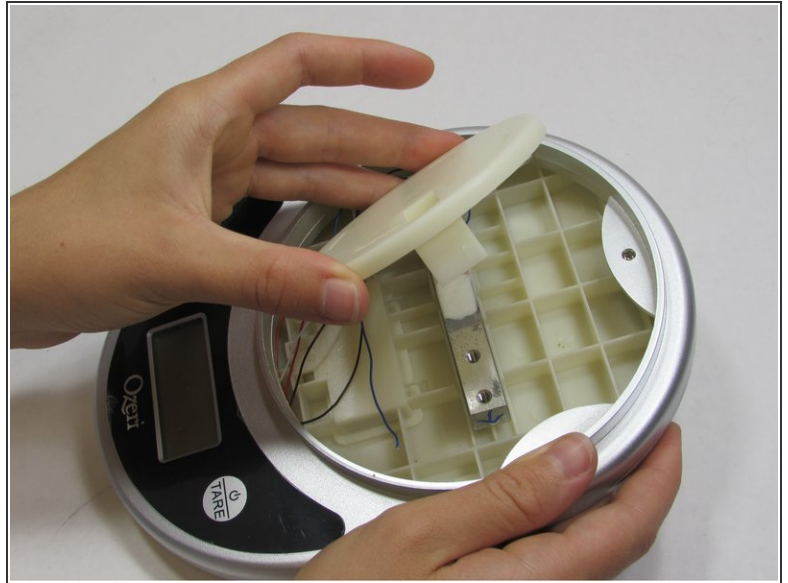
- Pry off the sticker at the bottom where the “Ozeri” logo is to reveal a screw. The sticker does not need to be completely removed for the next step.

## Step 3



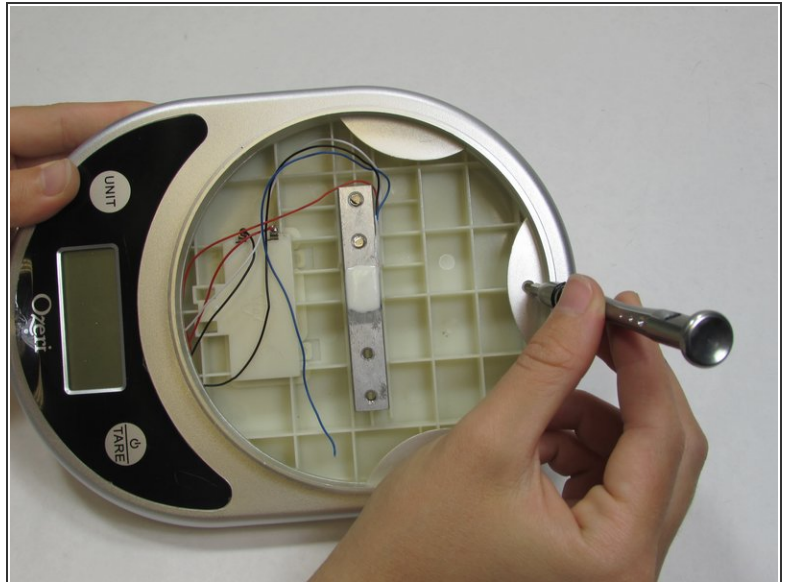
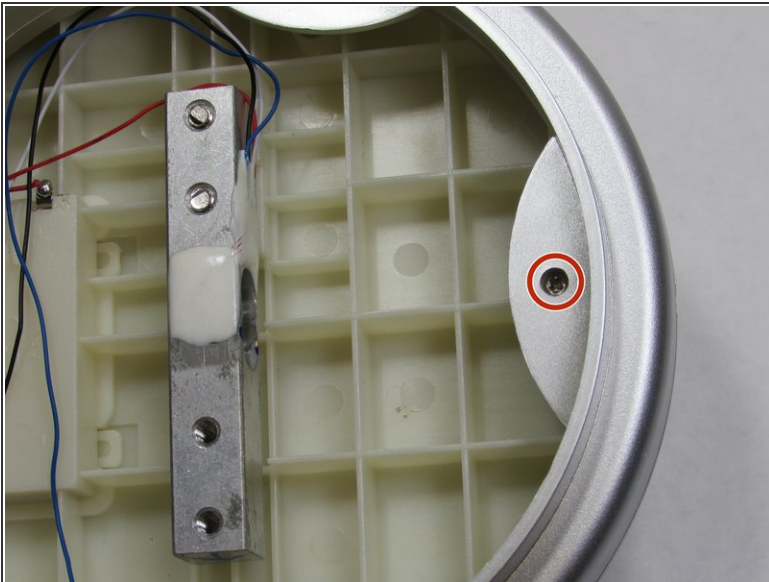
- Using the 2.0 Flathead screwdriver, remove the 9.50 mm Phillips head screw under the sticker.

## Step 4



- Using the 2.0 Flathead screwdriver, remove the two 18.76 mm Phillips head screws in the plate stand.

## Step 5



- Using the 2.0 Flathead screwdriver, remove the 9.44 mm Phillips head screw on the end opposite of the LCD screen.

## Step 6



- Turn the device over so the back panel is facing up.

## Step 7



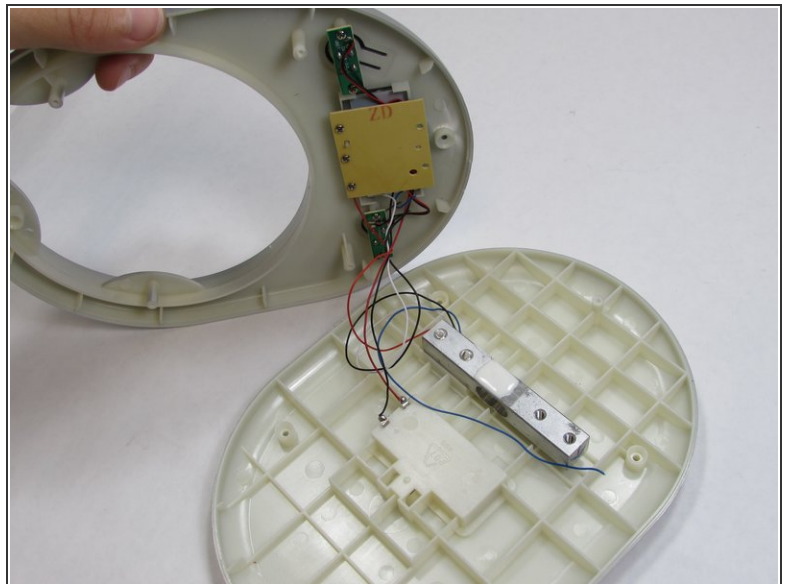
- Using the plastic opening tool, pry off each of the two rubber stubs on the right side and the two stubs on the left side of bottom of the device.

## Step 8



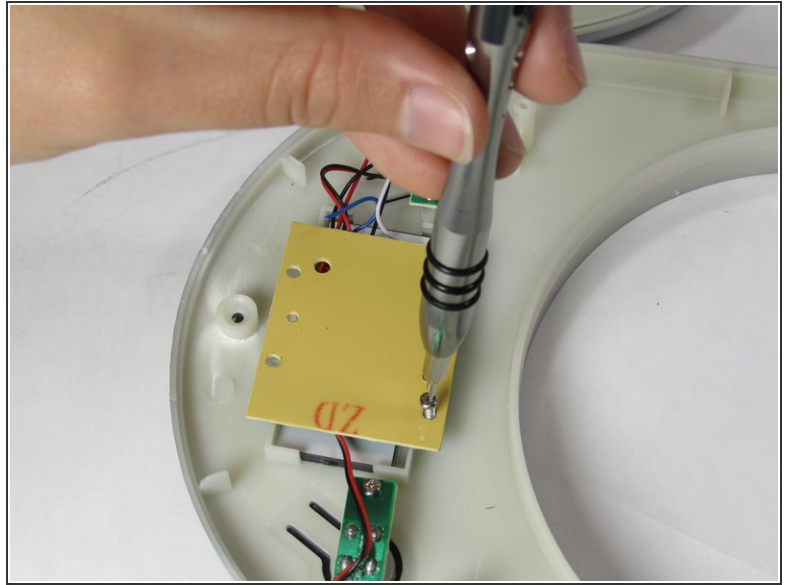
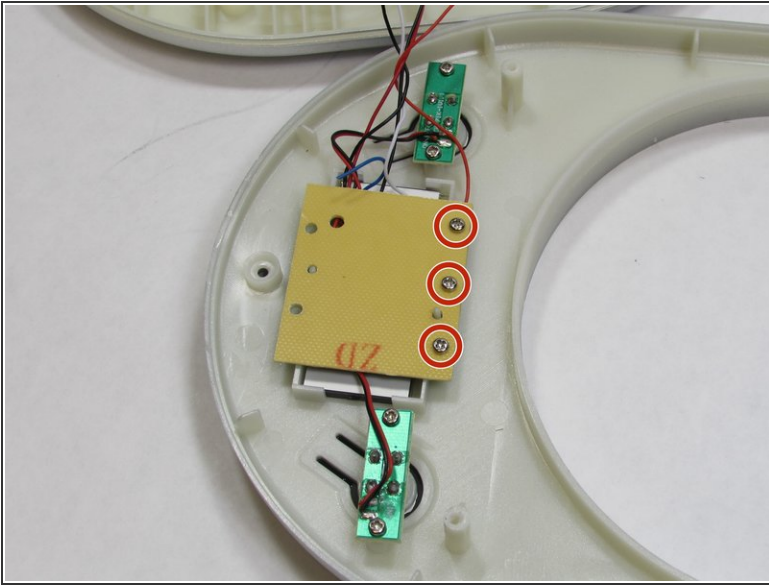
- Using the 2.0 Flathead screwdriver, remove of the four 9.46 mm Phillips head screws under the removed stubs.

## Step 9



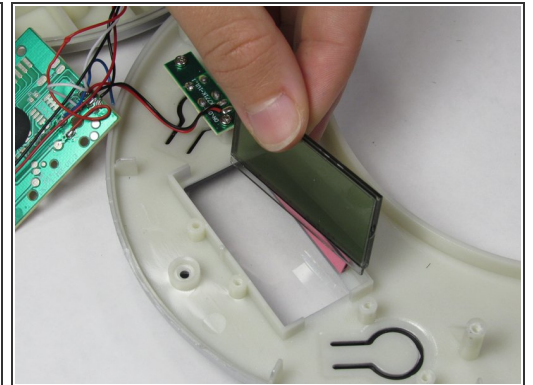
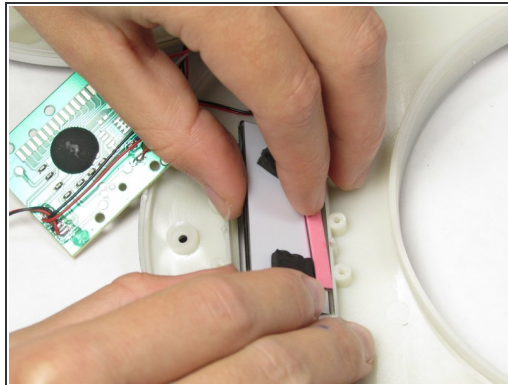
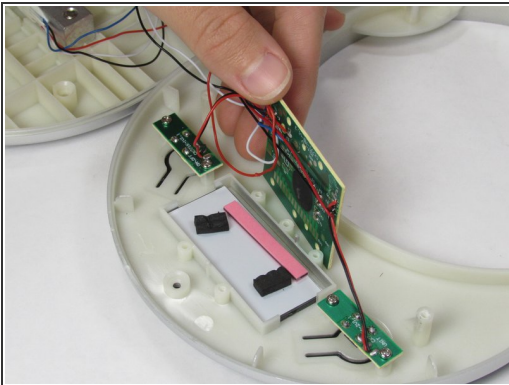
- Pry apart the two panels to separate them from each other.
- Flip the device over so the LCD is facing up. Flip the front panel over on its side.
- ⚠ Be careful when separating the panels to avoid damaging the wires they are connected by.

## Step 10 — LCD



- Using the 2.0 Flathead screwdriver, remove the three 7.20 mm screw on the back of the center LCD motherboard.

## Step 11



- Stand the center motherboard up to expose the LCD screen
  - ⚠ Be careful when standing up the LCD motherboard to avoid damaging the wires it is connected to.
- Remove the LCD screen.

To reassemble your device, follow these instructions in reverse order.

This document was generated on 2019-09-23 12:11:41 PM (MST).

