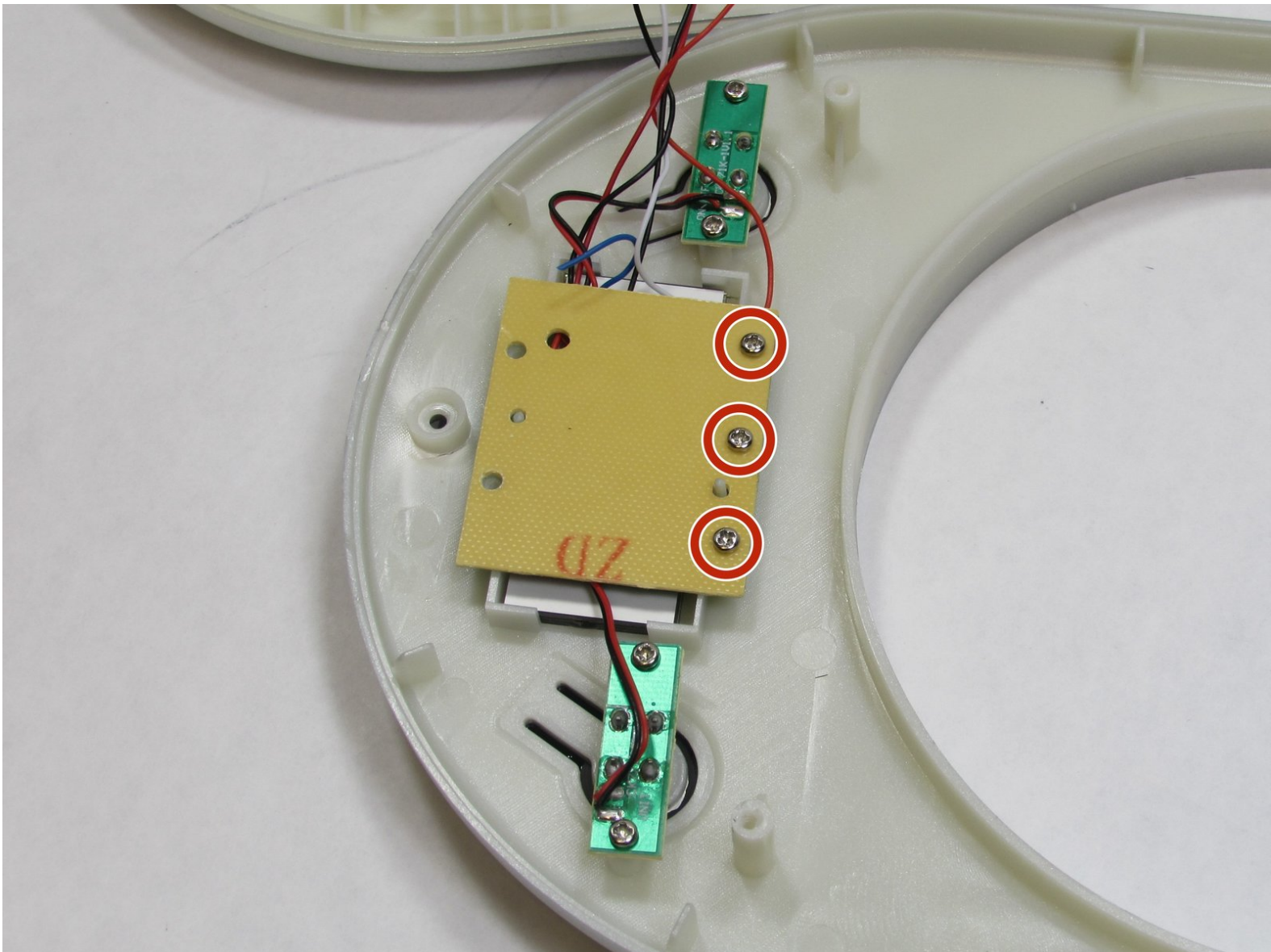




Ozeri Pronto ZK14-S Wire Replacement

Replace a damaged wire to bring power back to the device.

Written By: Oneika White



INTRODUCTION

This guide explains how to remove the wires from the weight sensor each of the motherboards inside the Ozeri Pronto ZK14-S in separate steps. Assistance may be necessary if you do not feel confident about using the iOpener.



TOOLS:

- [2.0 Flathead screwdriver](#) (1)
 - [iOpener](#) (1)
 - [Metal Spudger](#) (1)
-

Step 1 — Panel Removal



- Twist the plastic plate slowly to the left to pull it away.

Step 2



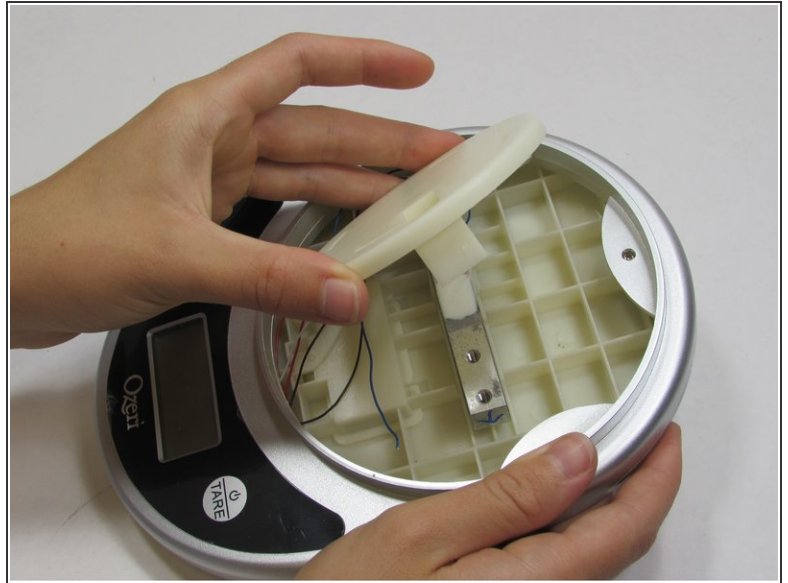
- Pry off the sticker at the bottom where the “Ozeri” logo is to reveal a screw. The sticker does not need to be completely removed for the next step.

Step 3



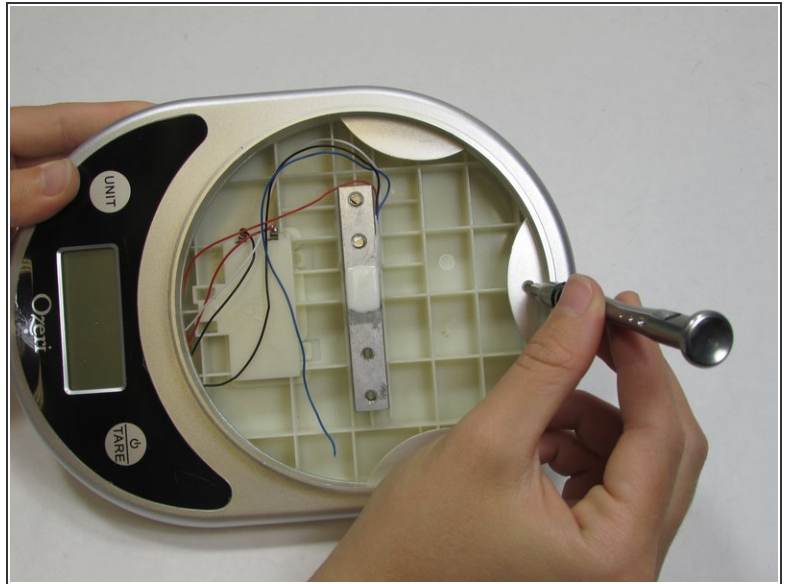
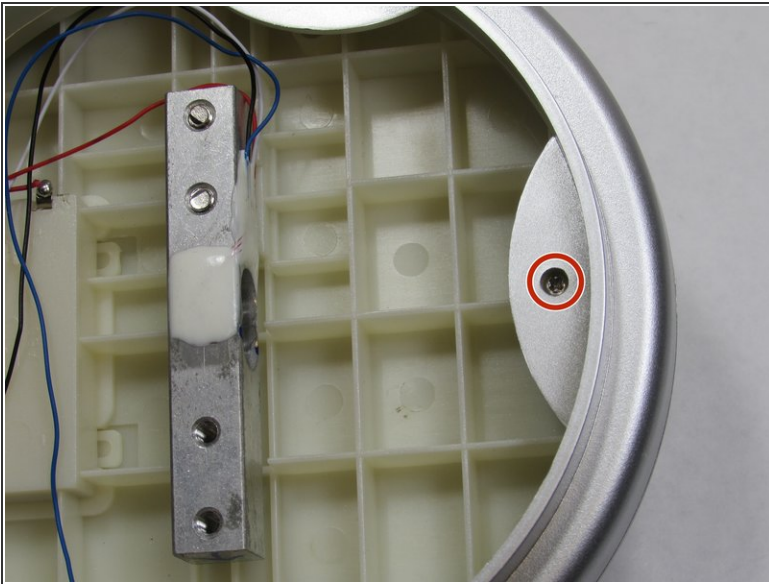
- Using the 2.0 Flathead screwdriver, remove the 9.50 mm Phillips head screw under the sticker.

Step 4



- Using the 2.0 Flathead screwdriver, remove the two 18.76 mm Phillips head screws in the plate stand.

Step 5



- Using the 2.0 Flathead screwdriver, remove the 9.44 mm Phillips head screw on the end opposite of the LCD screen.

Step 6



- Turn the device over so the back panel is facing up.

Step 7



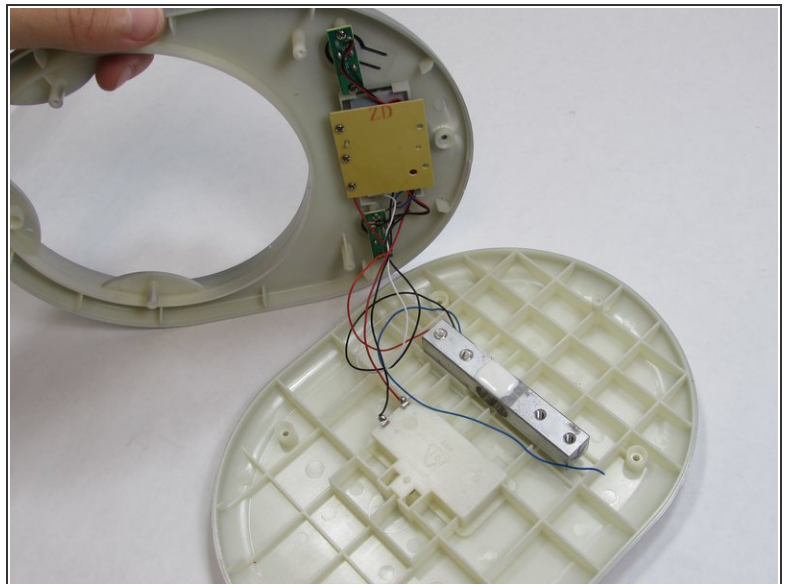
- Using the plastic opening tool, pry off each of the two rubber stubs on the right side and the two stubs on the left side of bottom of the device.

Step 8



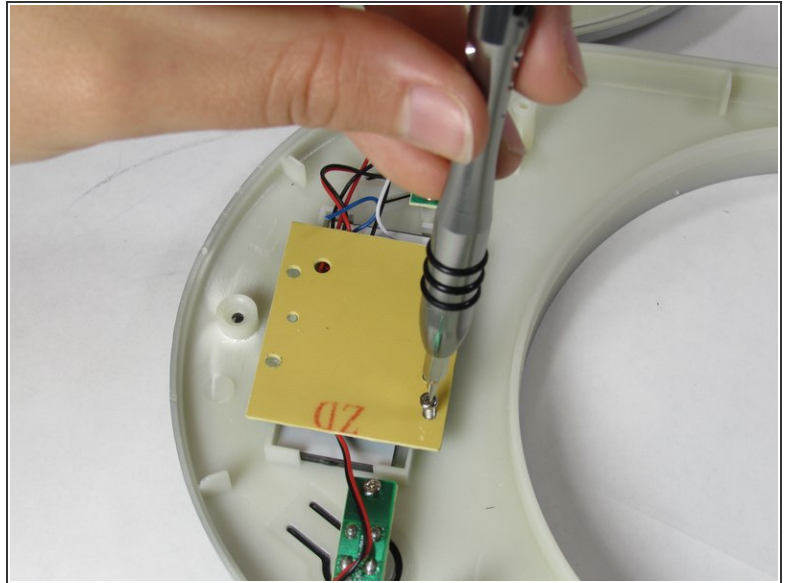
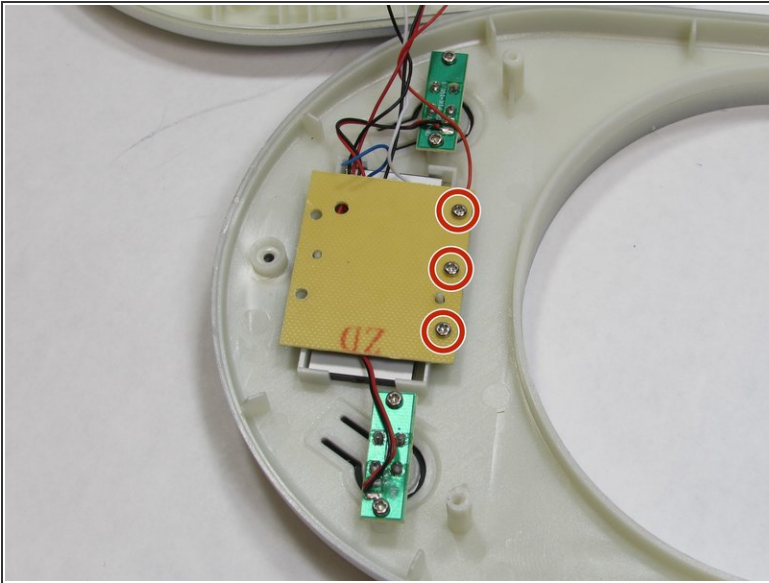
- Using the 2.0 Flathead screwdriver, remove of the four 9.46 mm Phillips head screws under the removed stubs.

Step 9



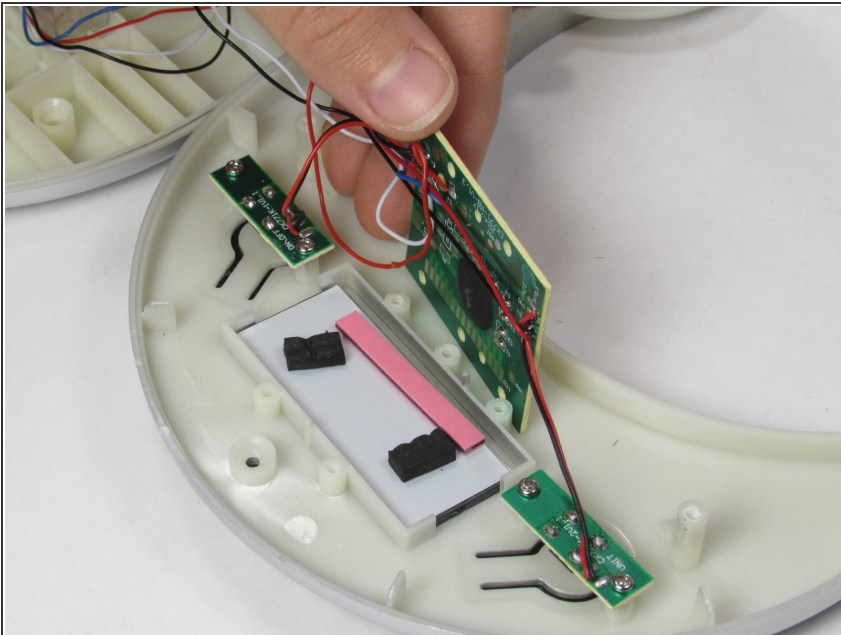
- Pry apart the two panels to separate them from each other.
- Flip the device over so the LCD is facing up. Flip the front panel over on its side.
- ⚠ Be careful when separating the panels to avoid damaging the wires they are connected by.

Step 10 — Wire



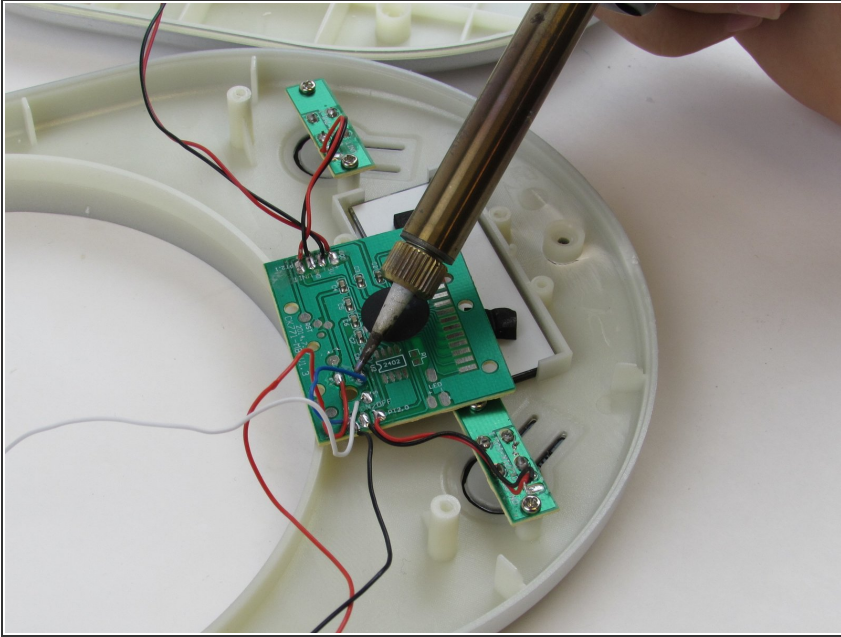
- Using the 2.0 Flathead screwdriver, remove the three 7.20 mm screws on the back of the center LCD motherboard.

Step 11



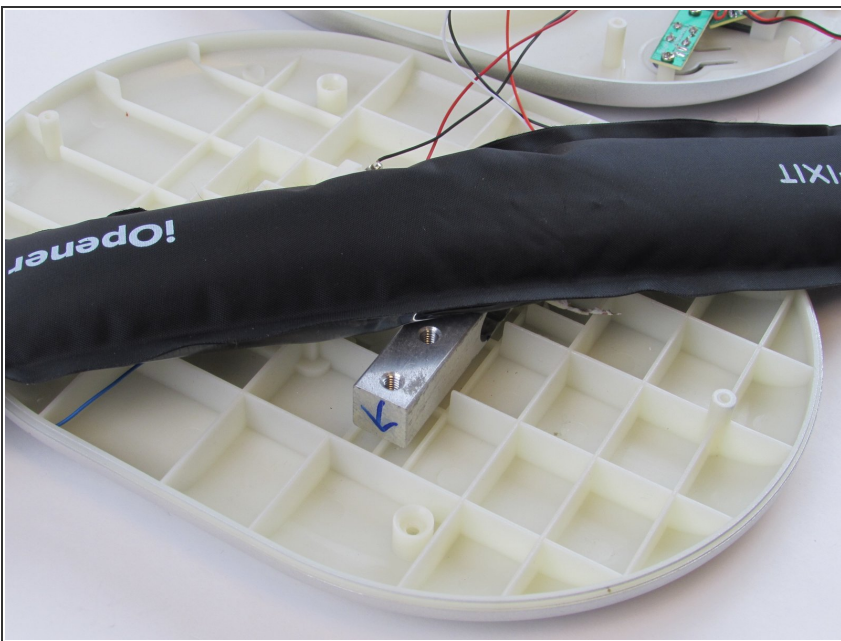
- Stand the center motherboard up.
 - ⚠ Be careful when standing up the LCD motherboard to avoid damaging the wires it is connected to.

Step 12



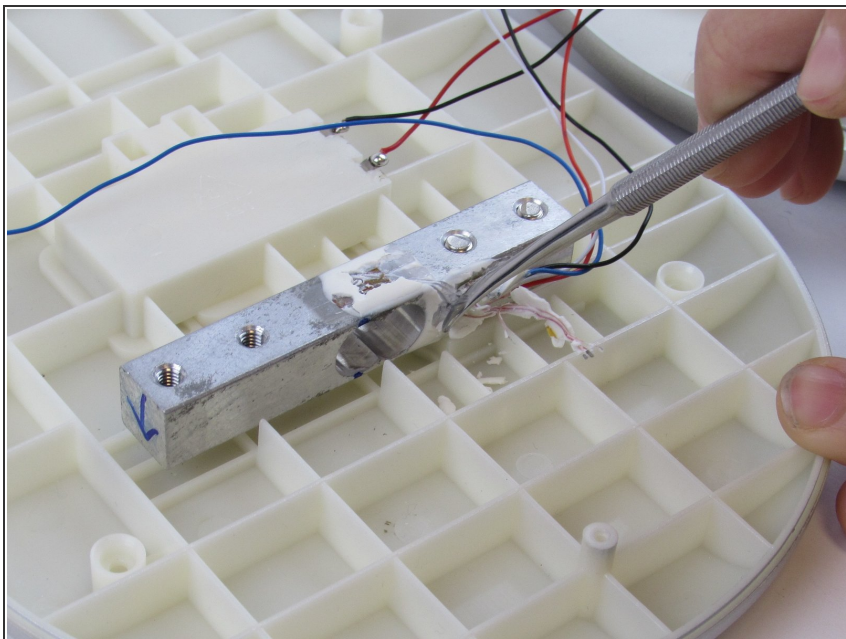
- Desolder the post the damaged wire is attached to on the motherboard.
- ⚠ Use caution when handling the soldering iron since it can get very hot.

Step 13



- Using the iOpener, warm the glue on the weight sensor the other end of the damaged wire is attached to.
- ⚠ Use caution when handling the iOpener since it can get very hot.
- ⓘ Refer to the following guide for detailed instructions on how to use the iOpener: [iOpener \(Legacy\) Instructions](#)

Step 14



- Using the nylon or metal spudger, detach the end of the damaged wire from the weight sensor.
- ⓘ Repeat steps 13 and 14 to remove the end of a damaged wire from the other two motherboards.

To reassemble your device, follow these instructions in reverse order.