



**TOOLS:**

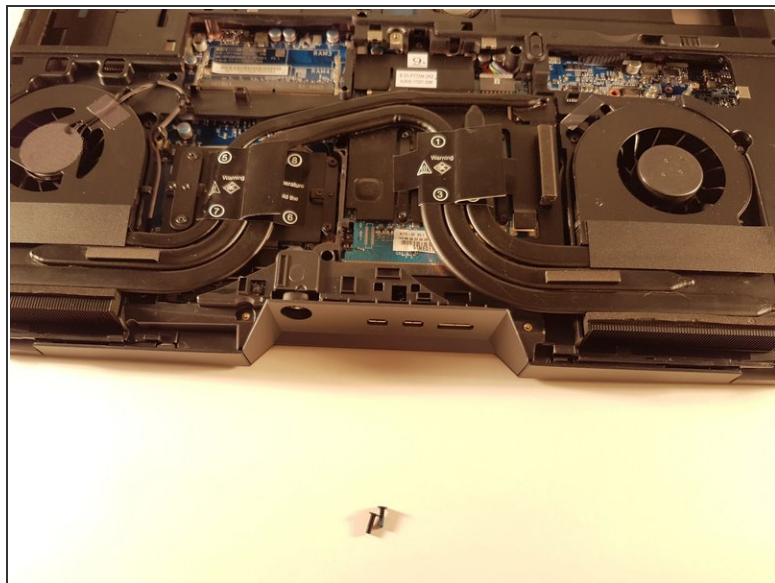
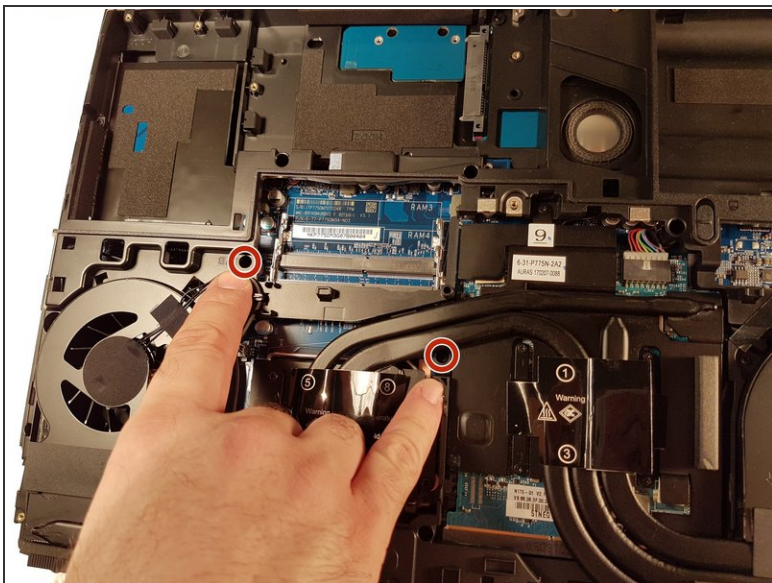
- [Phillips #0 Screwdriver](#) (1)
- [Tweezers](#) (1)

**PARTS:**

- [New Item](#) (1)
- [New Item](#) (1)

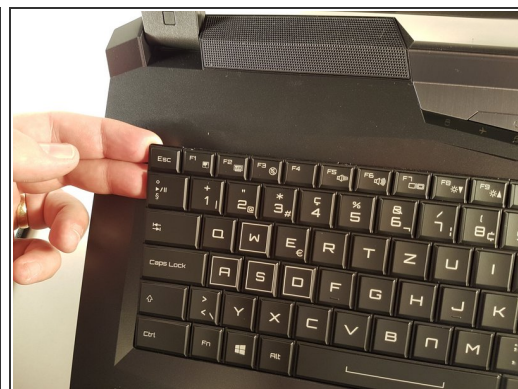
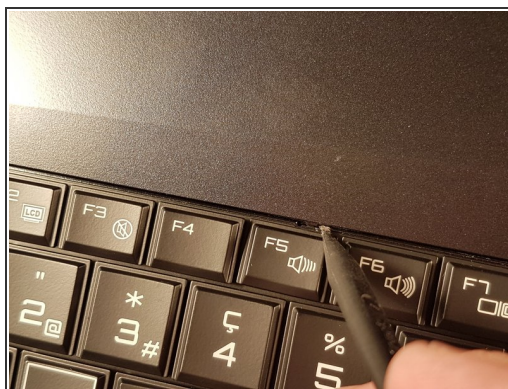
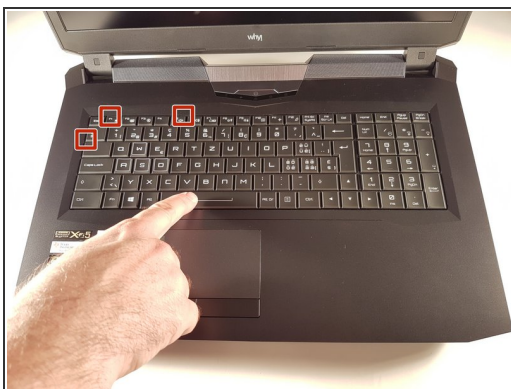


## Step 1 — The keyboard



- Unscrew the two screws circled in red

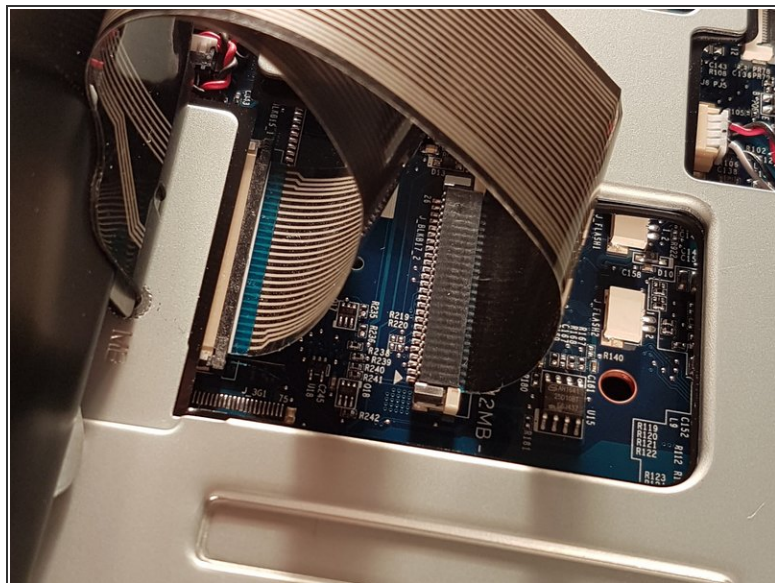
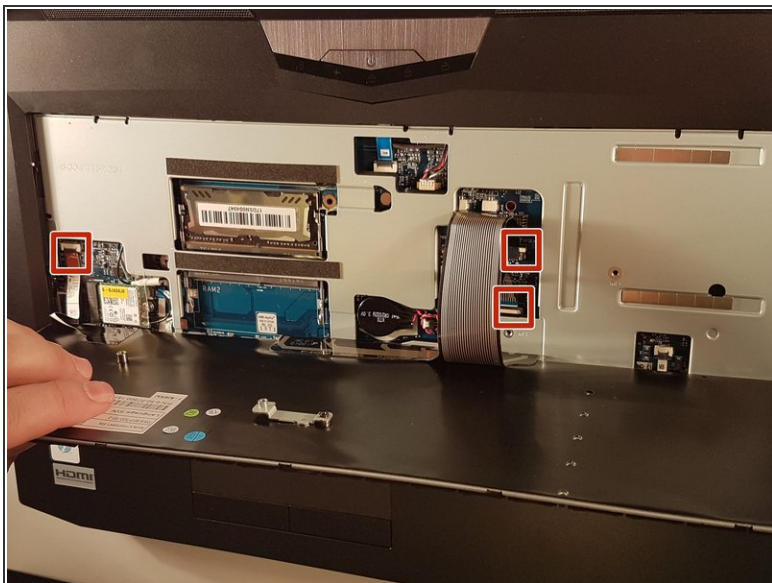
## Step 2



- Press a paper clip in the three places marked in red
- Lift the keyboard and feel free to put some strength

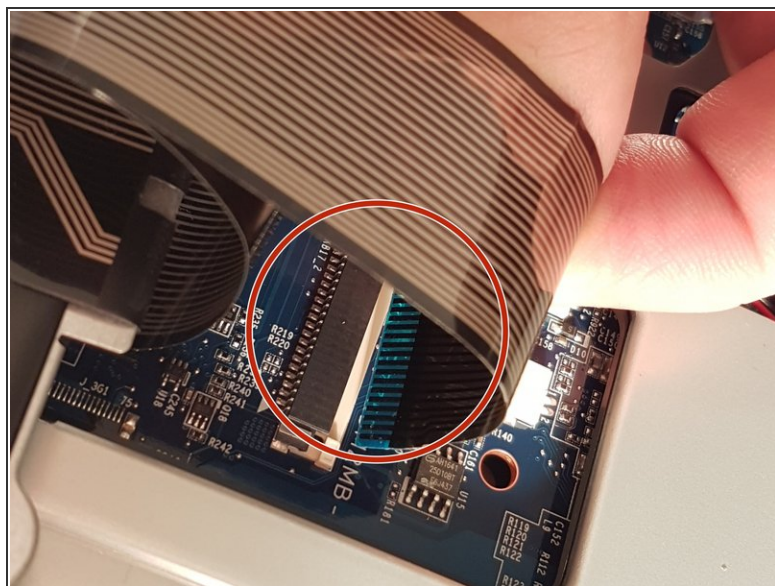
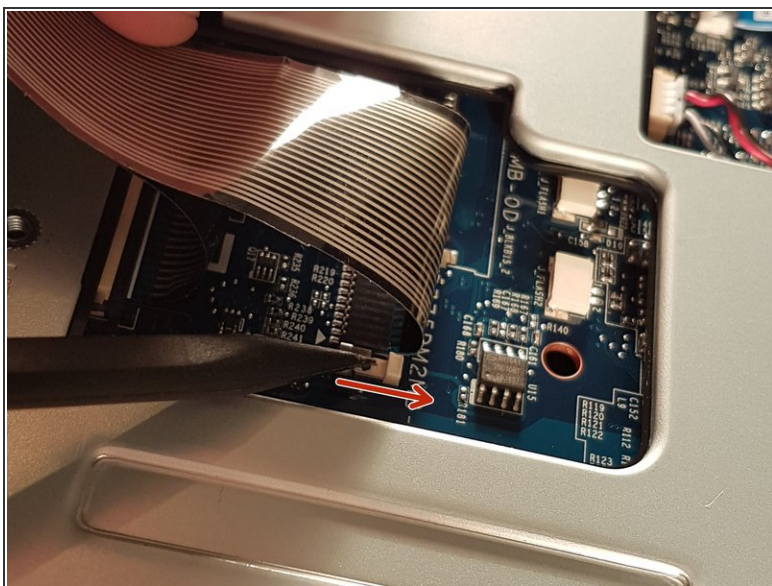


## Step 3



- Disconnect the three framed connectors in red

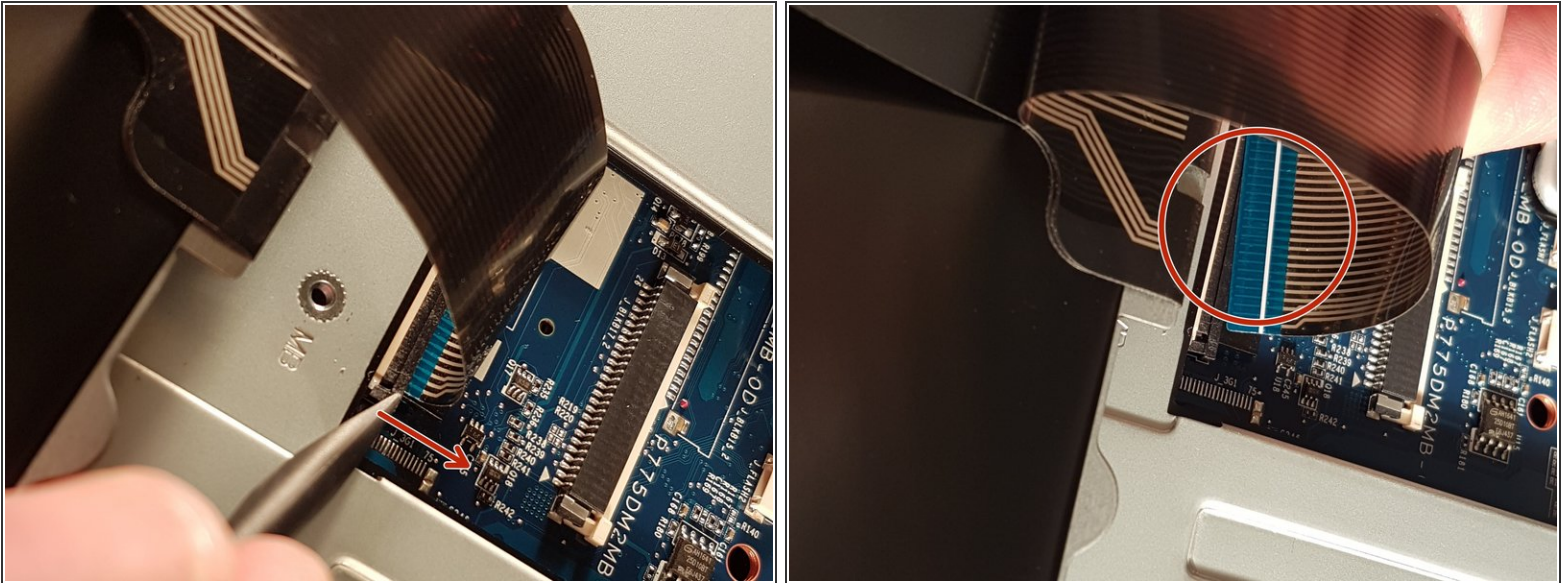
## Step 4



- Pull the white drawer in the direction of the arrow to unlock the connector
- Disconnect the red circled connector

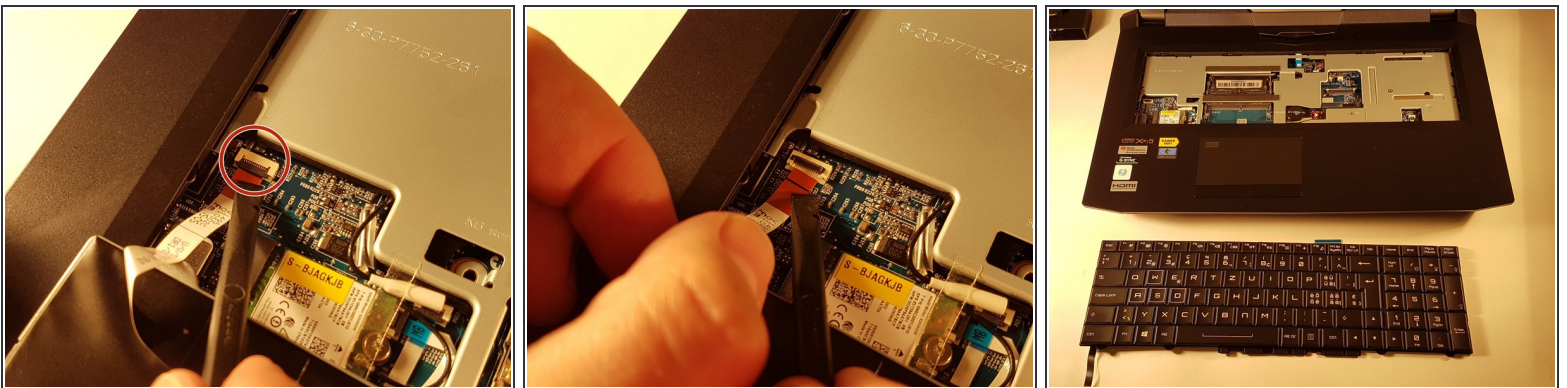


## Step 5



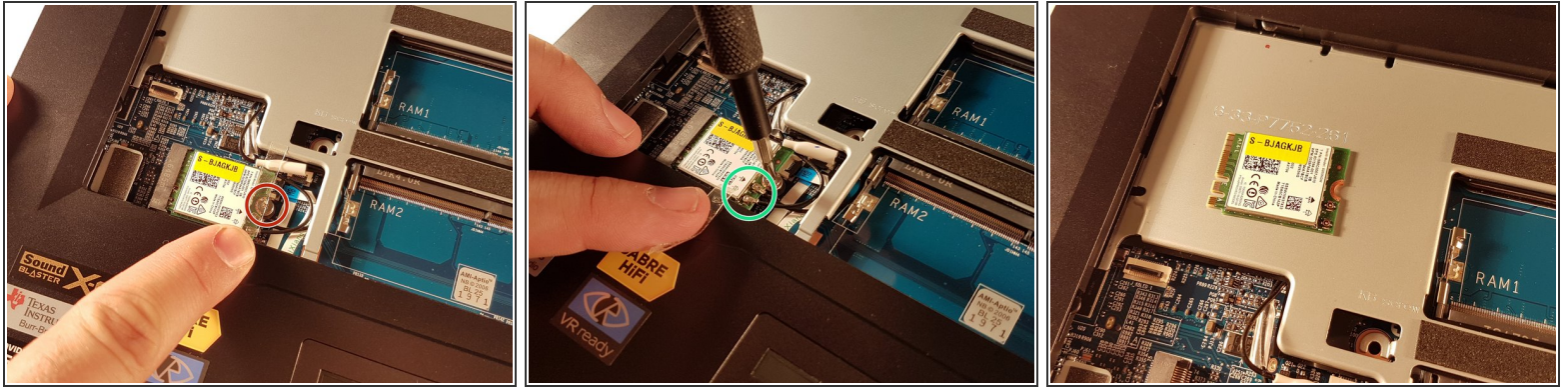
- Pull the black drawer in the direction of the arrow to unlock the connector
- Disconnect the red circled connector

## Step 6



- Lift the flap that holds the connector circled in red
- Disconnect the red circled connector
- Remove the keyboard

## Step 7 — WLAN card



- Unscrew the screw circled in red
- Disconnect the two connectors circled in green
- Remove the WLAN card

To reassemble your device follow the following instructions in reverse order