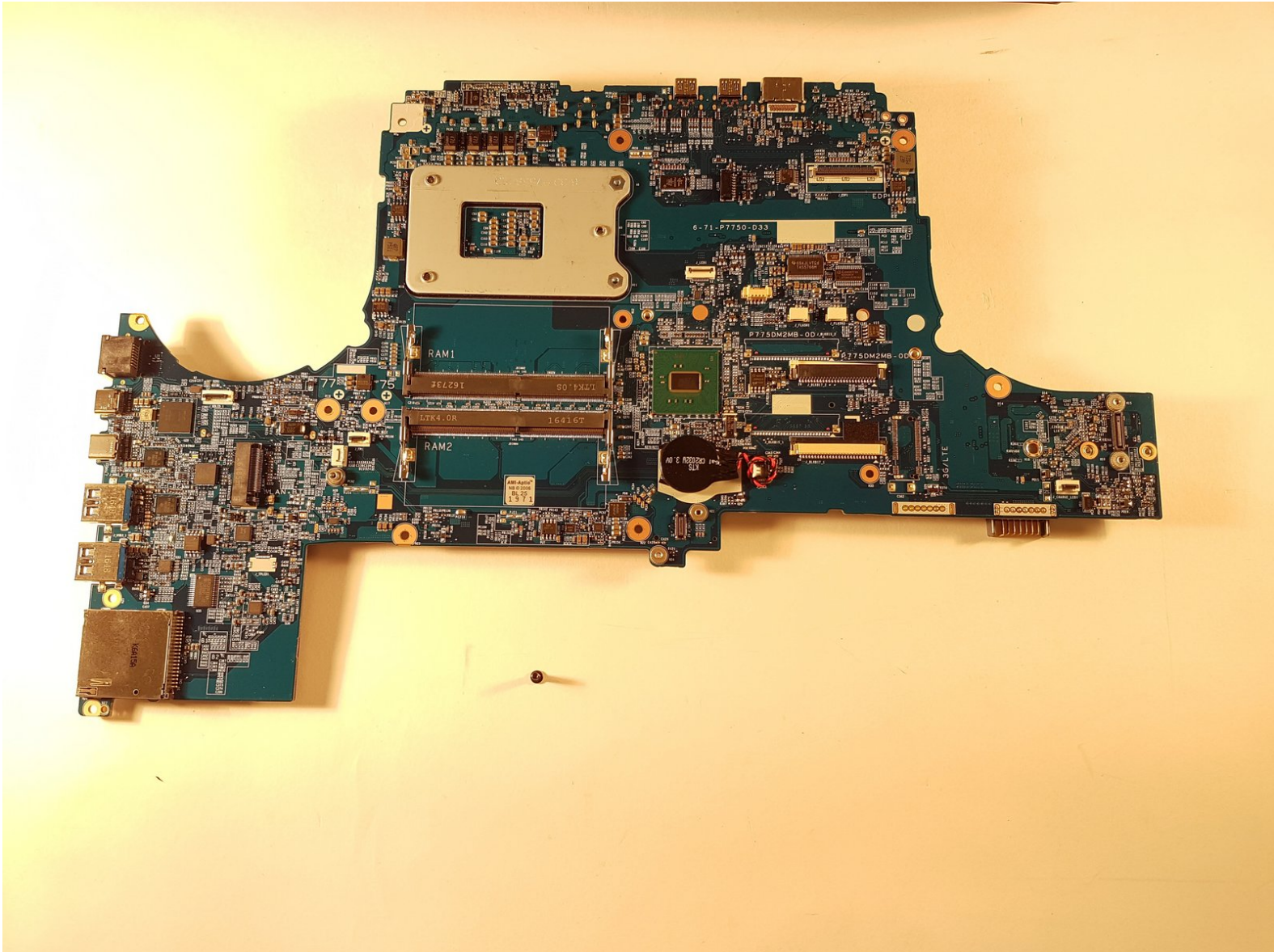




# P775DM3 Replacement motherboard

Written By: Felice Suglia



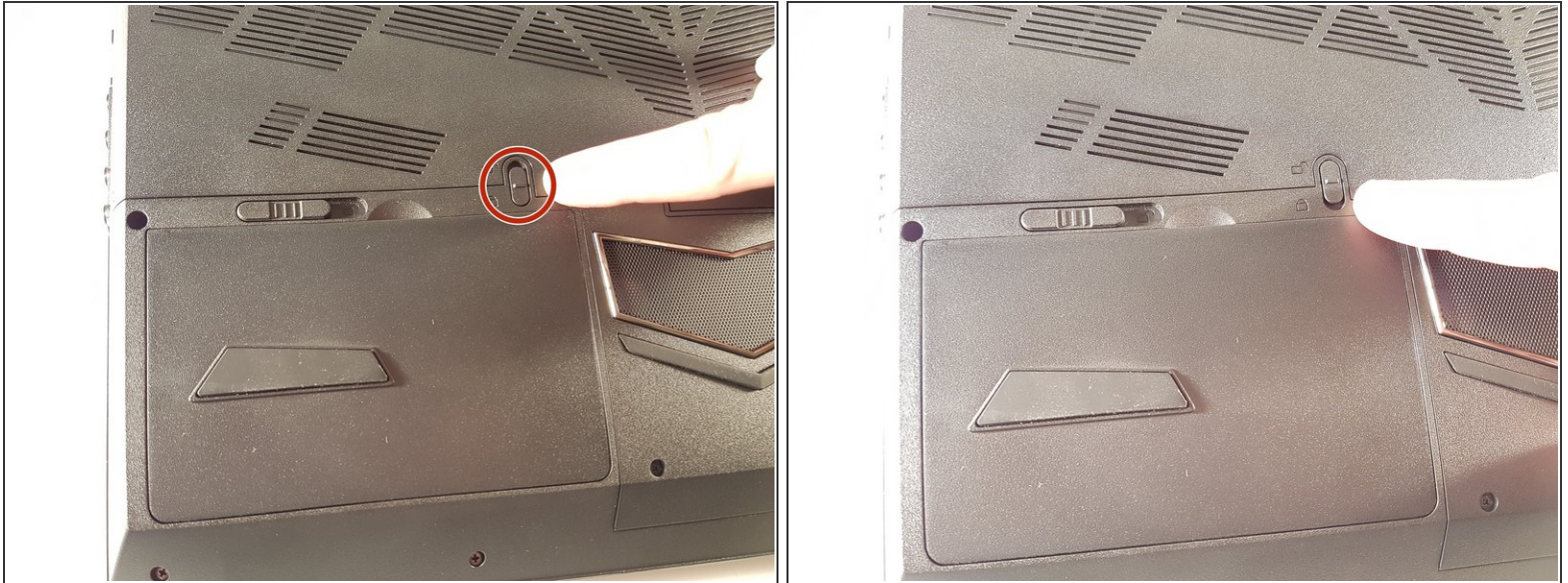
**TOOLS:**

- [Phillips #0 Screwdriver](#) (1)
- [Tweezers](#) (1)

**PARTS:**

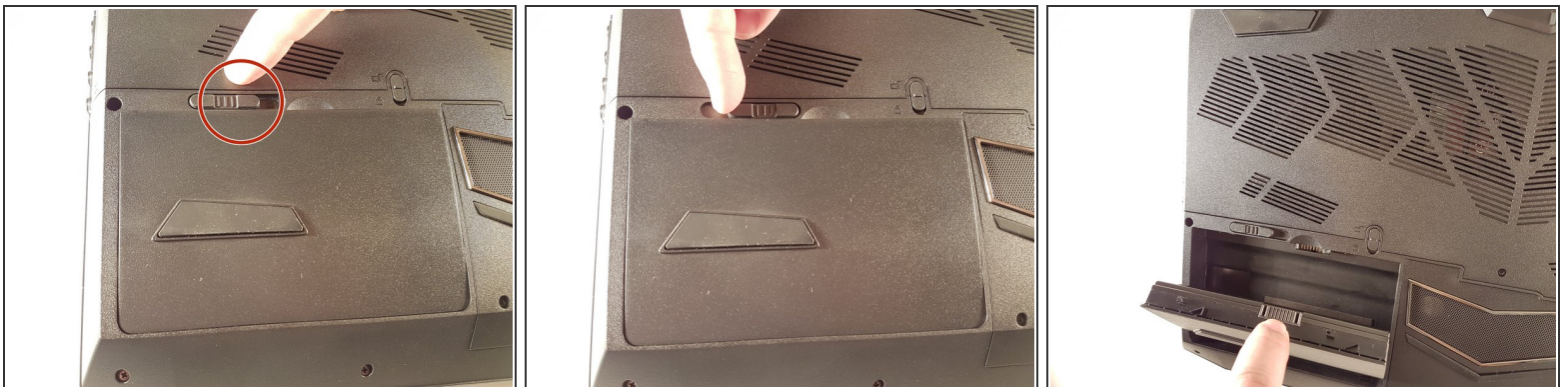
- [New Item](#) (1)
- [New Item](#) (1)

## Step 1 — Battery



- Unlock the lock marked in red.

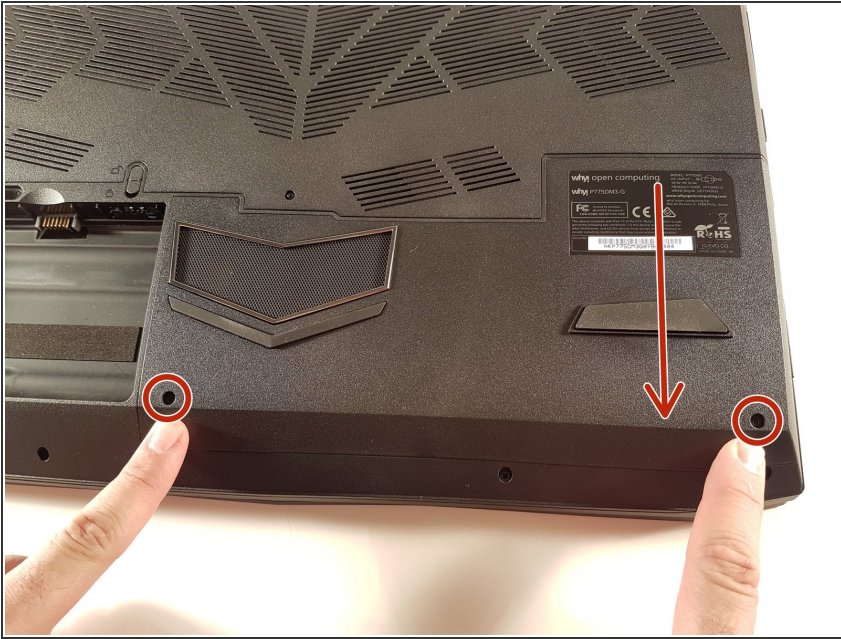
## Step 2



- Lift up the battery while unlocking the lock marked in red.



### Step 3 — Disk access



- Unscrew the two screws circled in red
- Slide the plate in the direction of the arrow

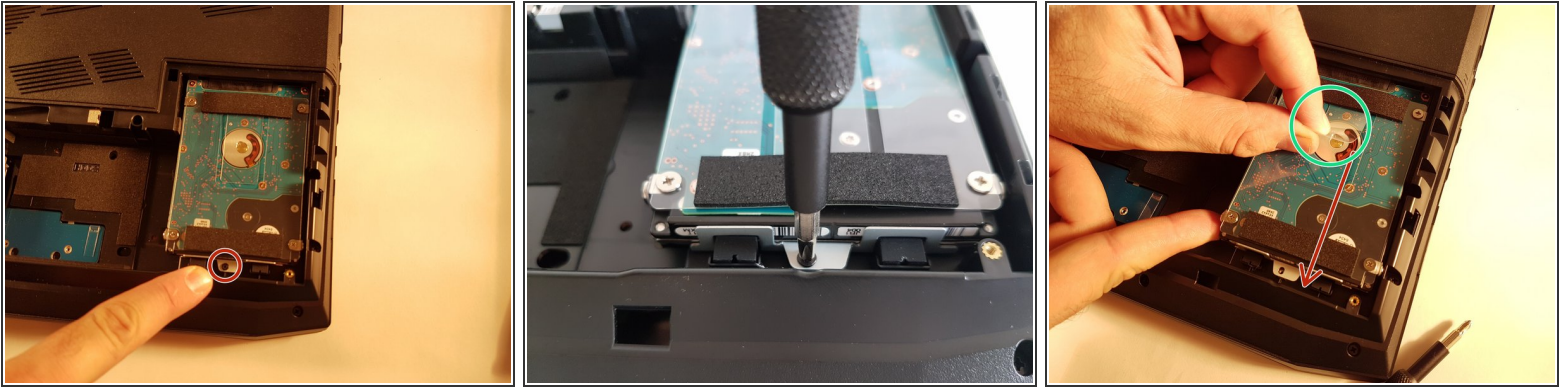
### Step 4



- Lift the plate

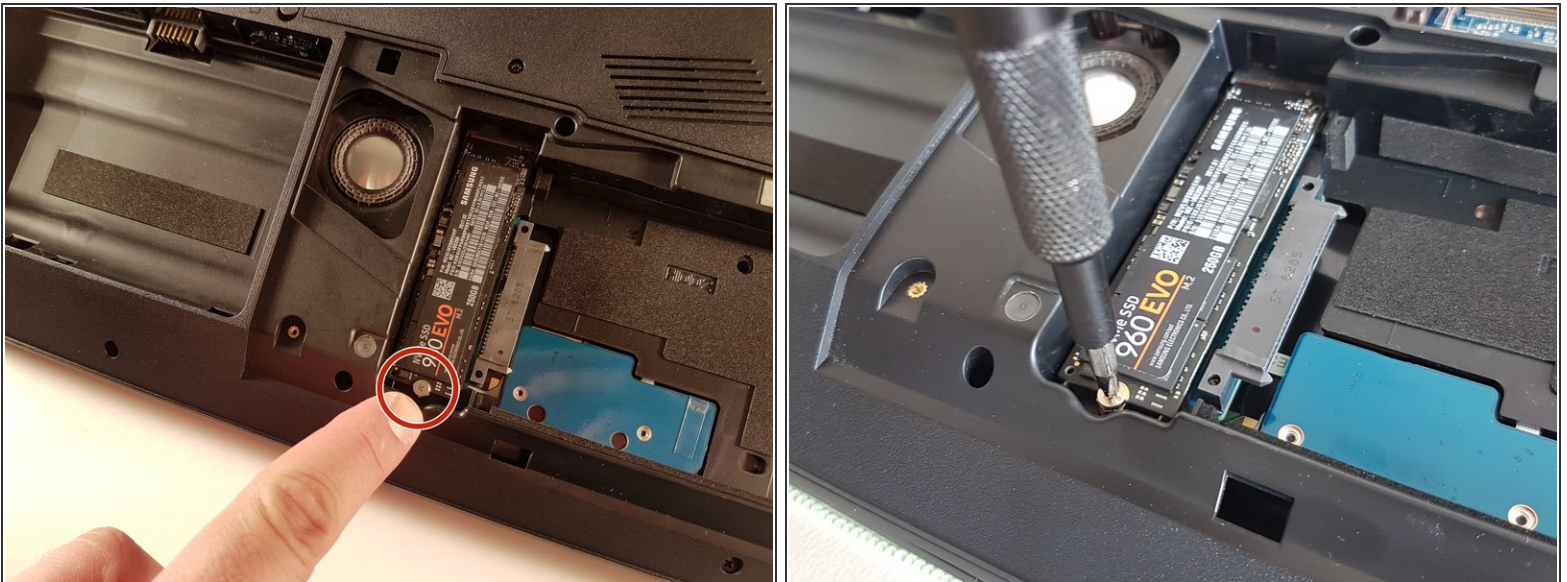


## Step 5 — Hard Disk (Mass Storage)



- Unscrew the screw circled in red
- Lift the disc with the green tab
- Remove the disc in the direction of the arrow

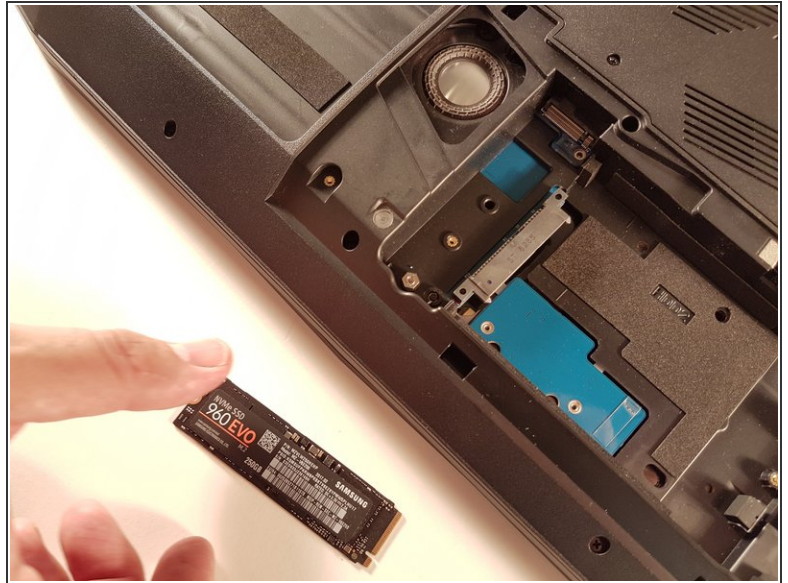
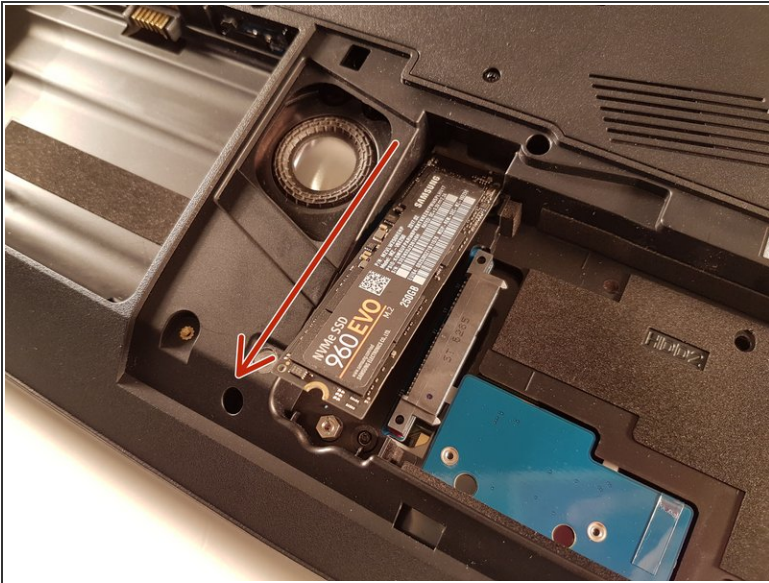
## Step 6 — Replacing SSD M.2 Disk



- Unscrew the screw circled in red



## Step 7



- Pull the SSD in the direction of the red arrow

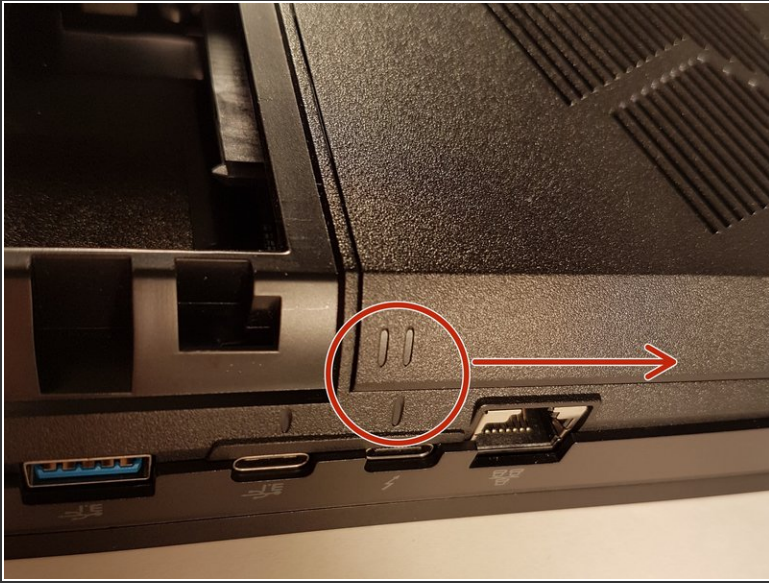
## Step 8 — Access to major components



- Unscrew the five screws circled in red

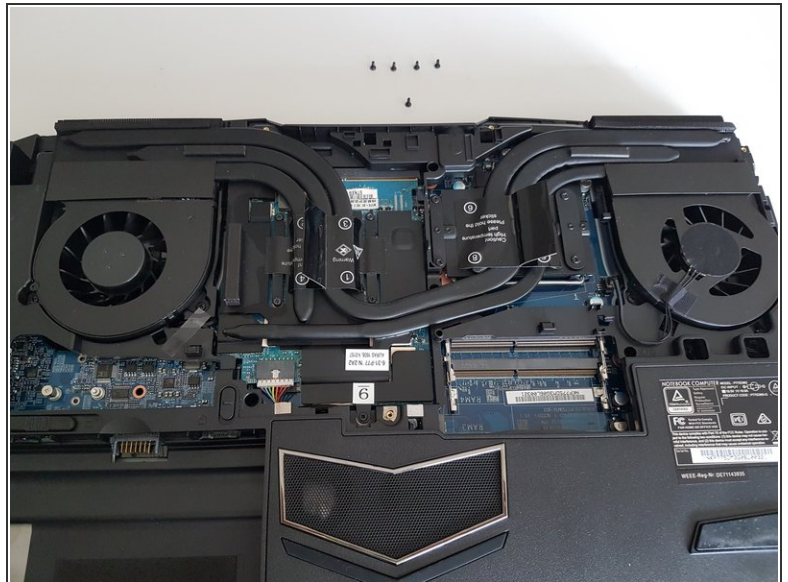
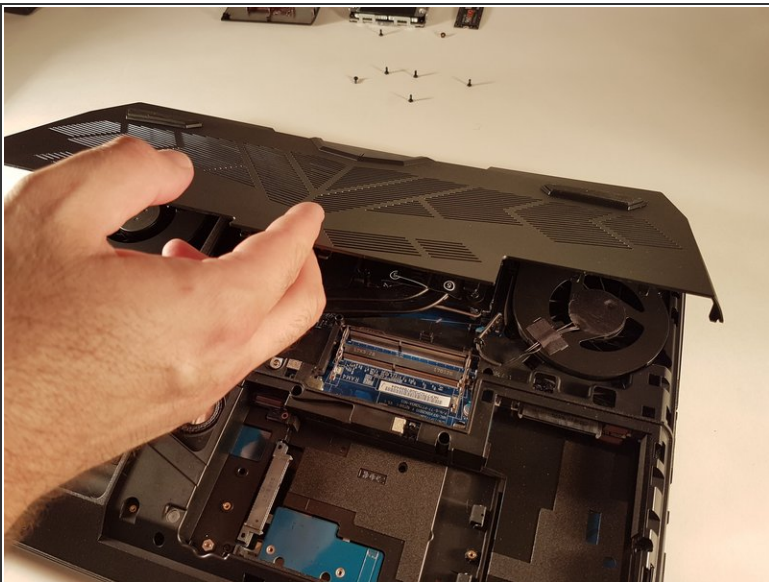


## Step 9



- Slide the plate in the direction of the red arrow

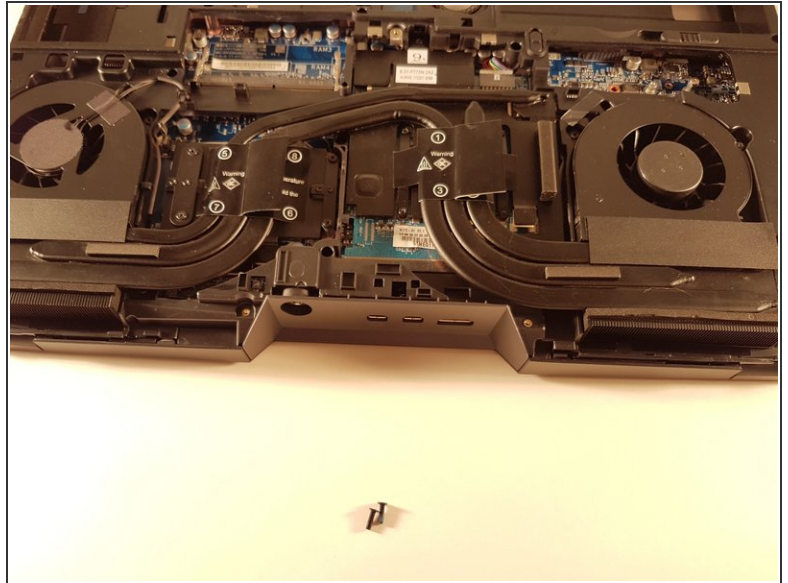
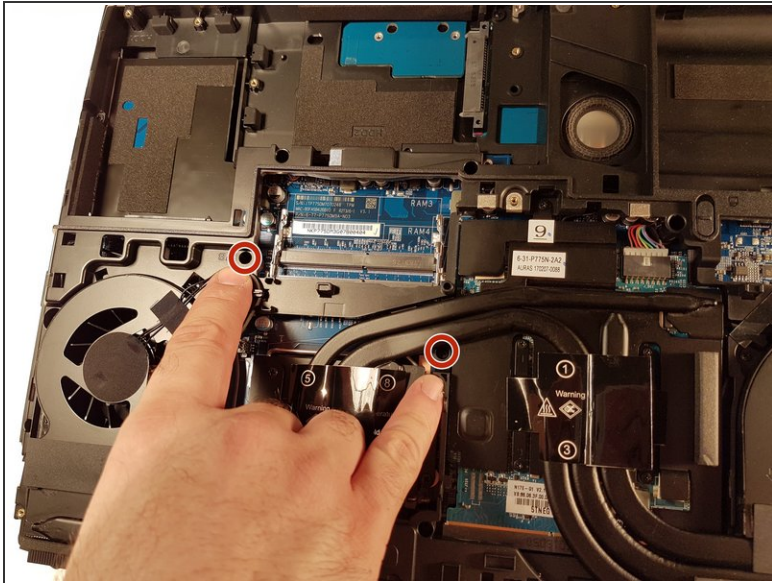
## Step 10



- Lift the plate

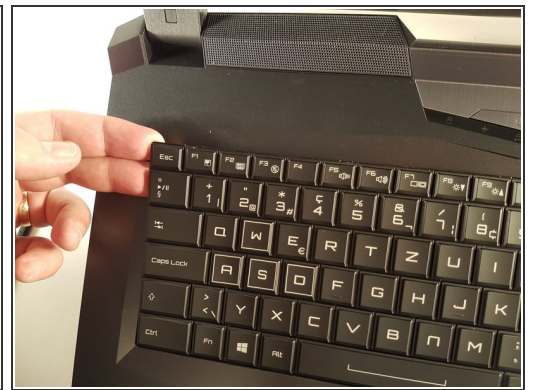
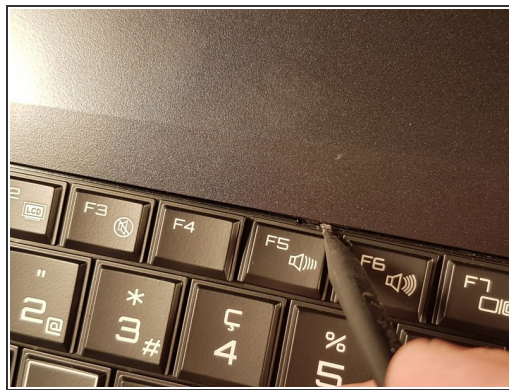
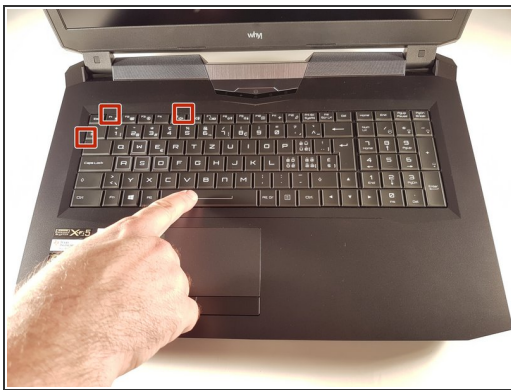


## Step 11 — The keyboard



- Unscrew the two screws circled in red

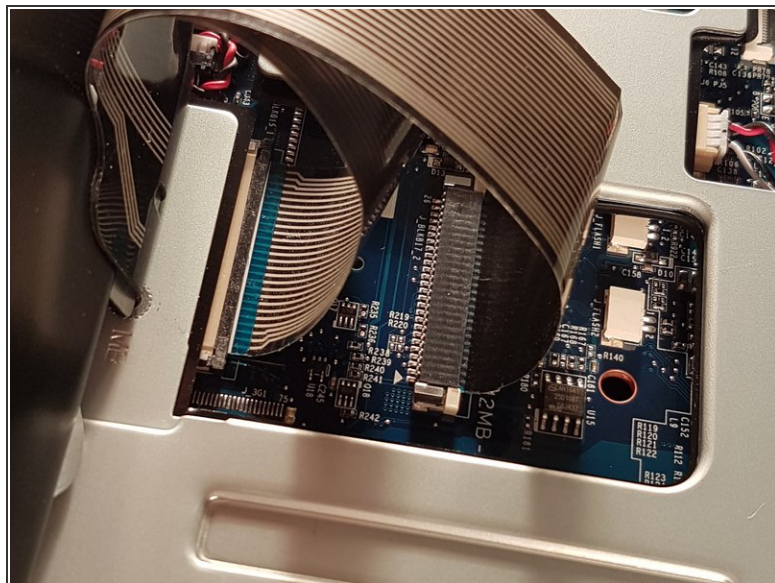
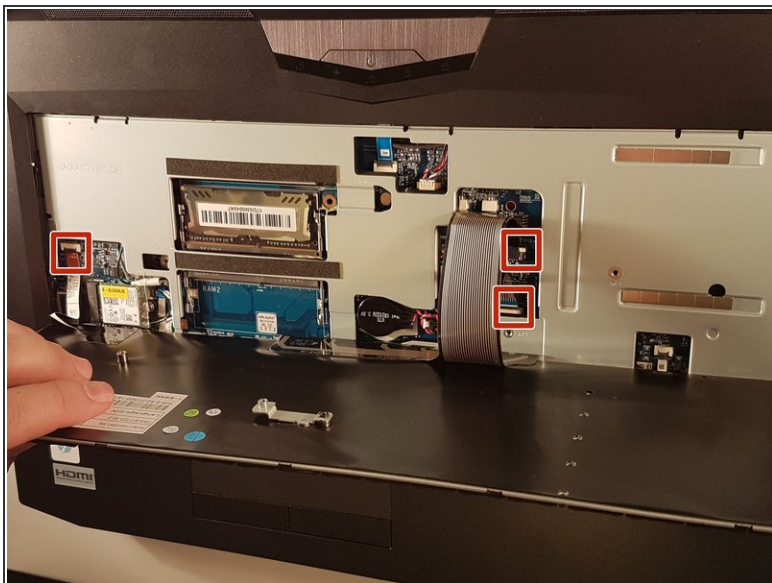
## Step 12



- Press a paper clip in the three places marked in red
- Lift the keyboard and feel free to put some strength

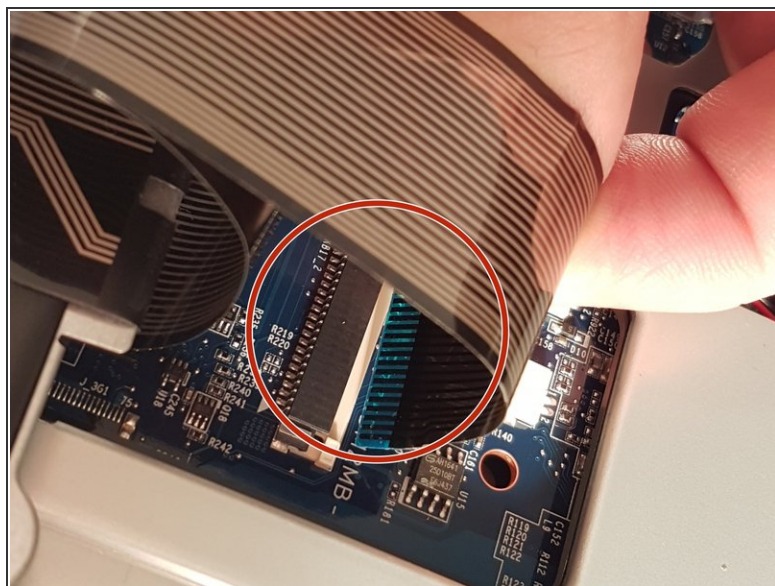
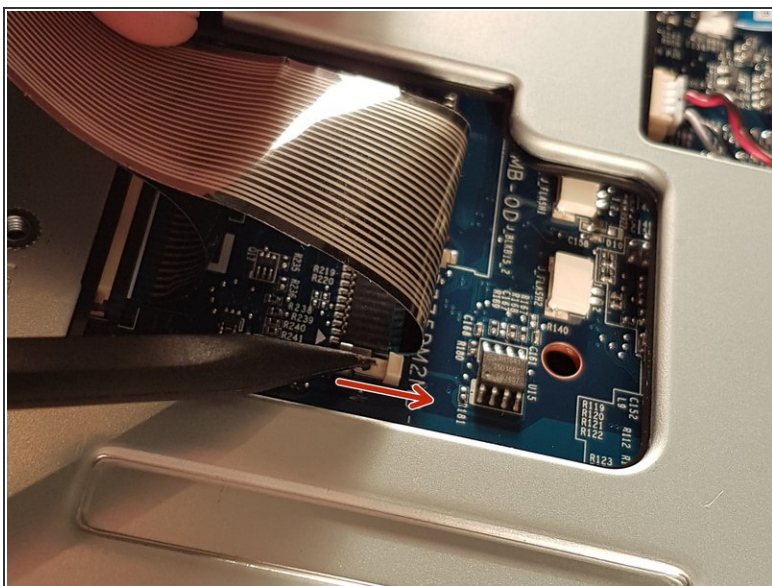


## Step 13



- Disconnect the three framed connectors in red

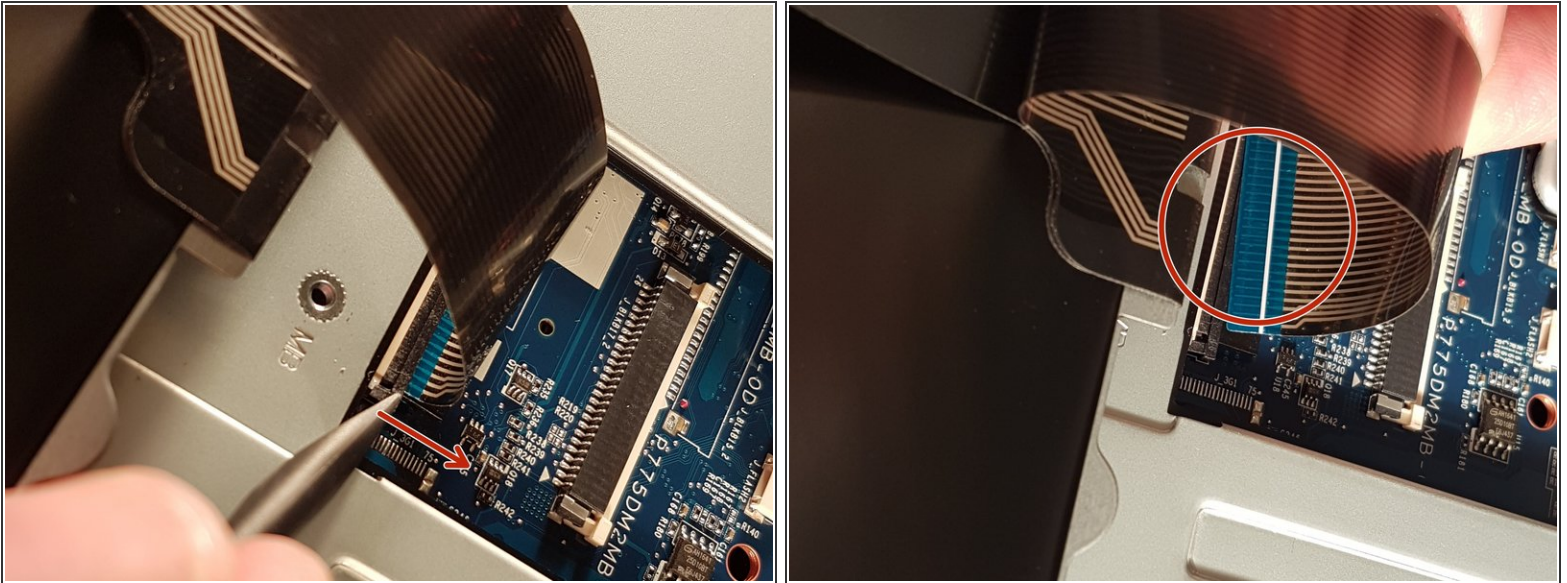
## Step 14



- Pull the white drawer in the direction of the arrow to unlock the connector
- Disconnect the red circled connector

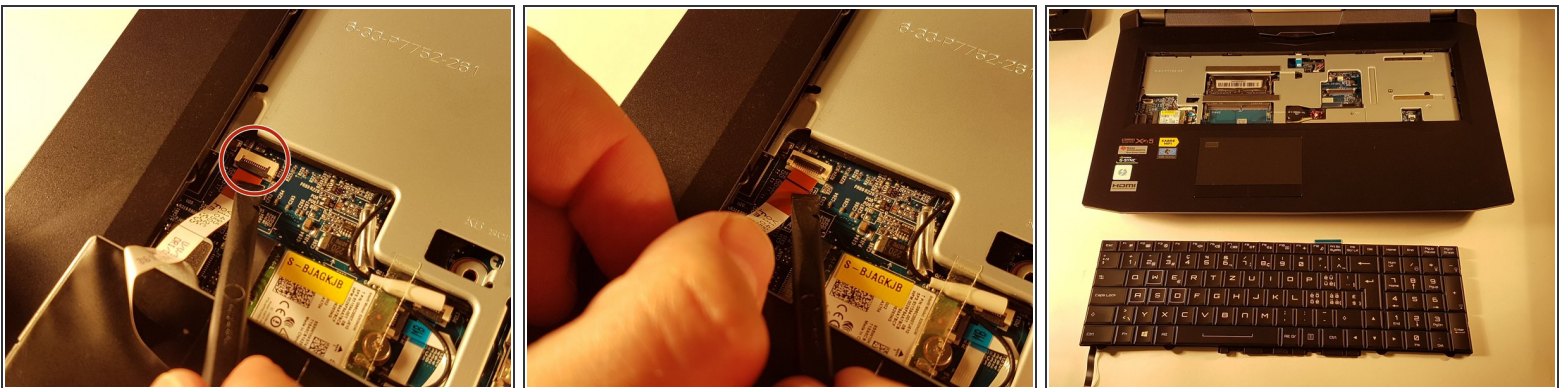


## Step 15



- Pull the black drawer in the direction of the arrow to unlock the connector
- Disconnect the red circled connector

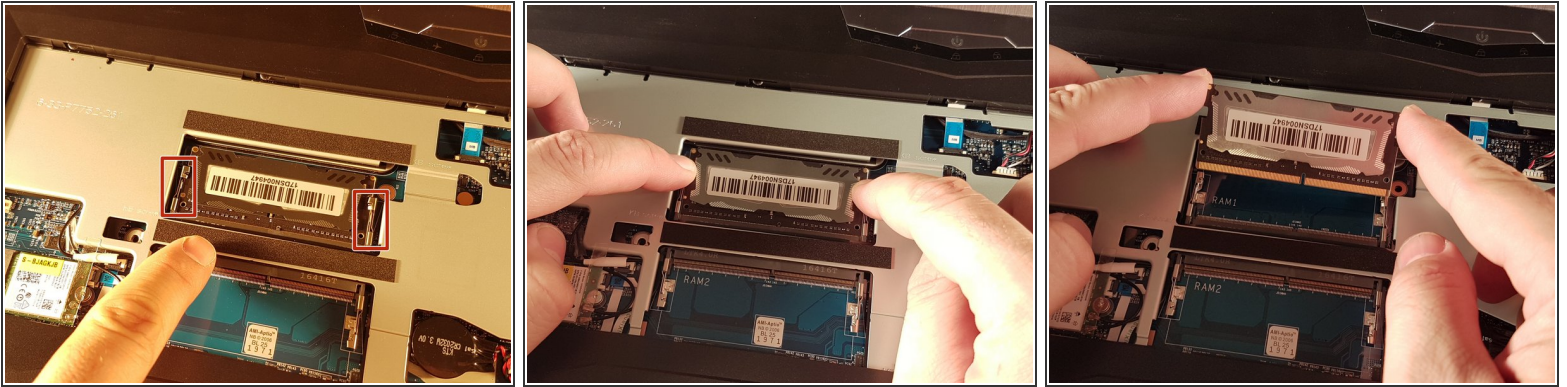
## Step 16



- Lift the flap that holds the connector circled in red
- Disconnect the red circled connector
- Remove the keyboard

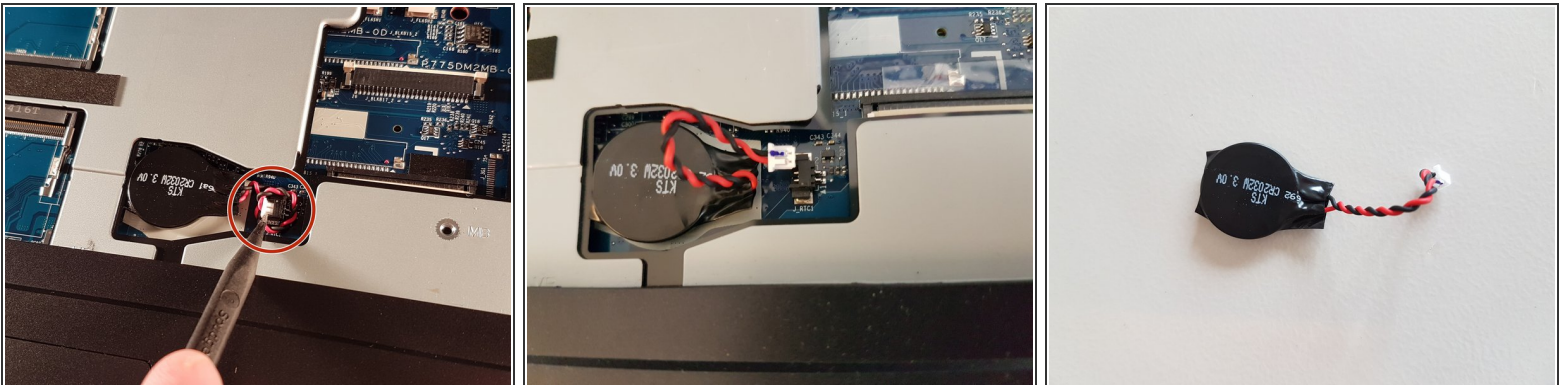


## Step 17 — RAM memory



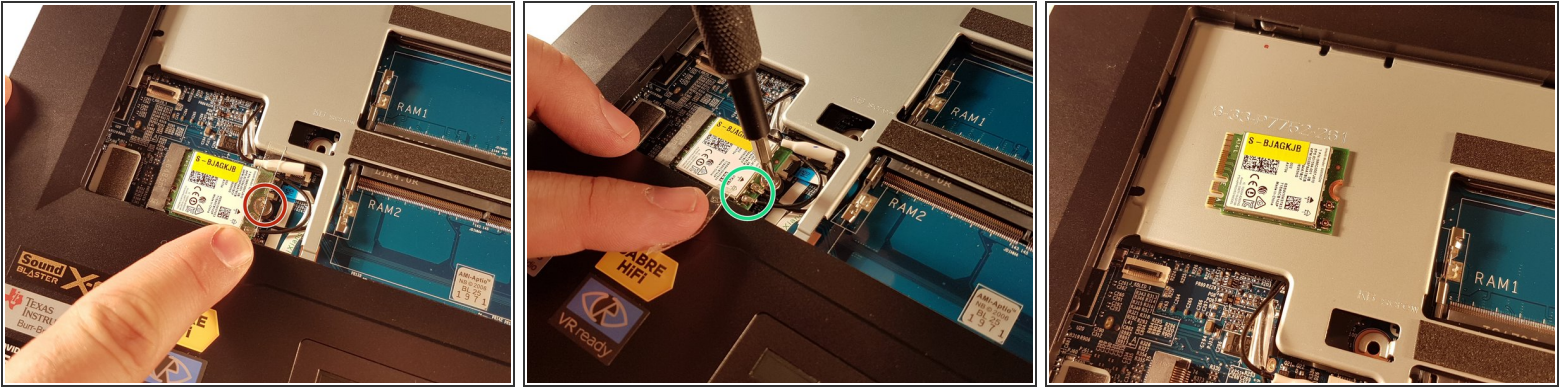
- Spread the two framed arms in red
- Remove the RAM card

## Step 18 — BIOS Battery



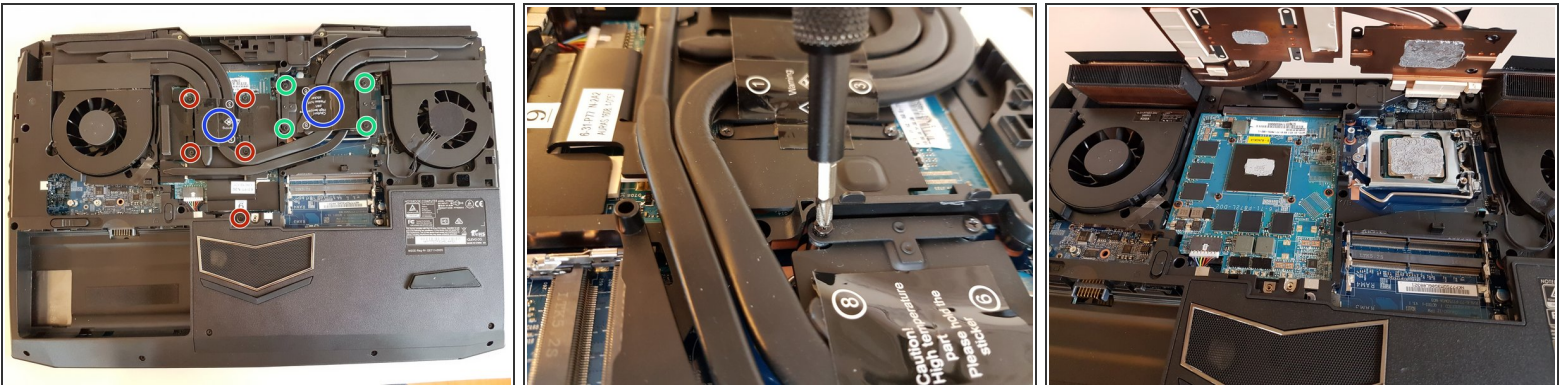
- Disconnect the connector circled in red.
- Remove the battery.

## Step 19 — WLAN card



- Unscrew the screw circled in red
- Disconnect the two connectors circled in green
- Remove the WLAN card

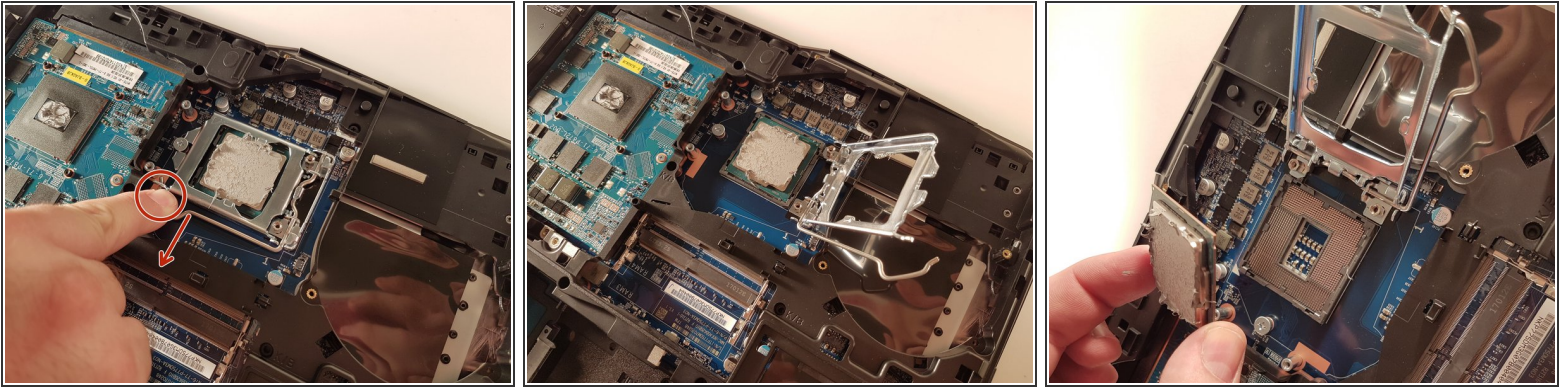
## Step 20 — The cooler



- Unscrew the four large screws circled in green
- Unscrew the five small screws circled in red
- Lift the cooler with the two tabs circled in blue

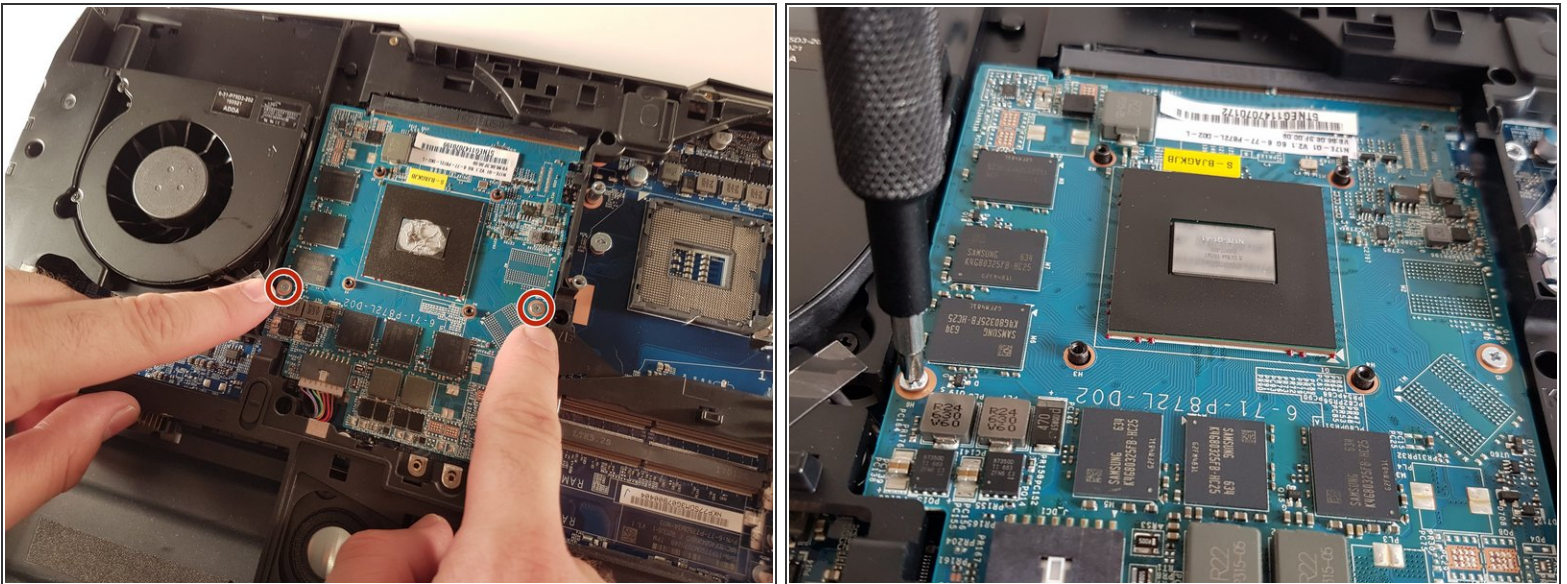


## Step 21 — processor



- Pull the lever circled in red in the direction of the red arrow while pressing on it
- Attention: Do not touch the bottom of the processor and take the side

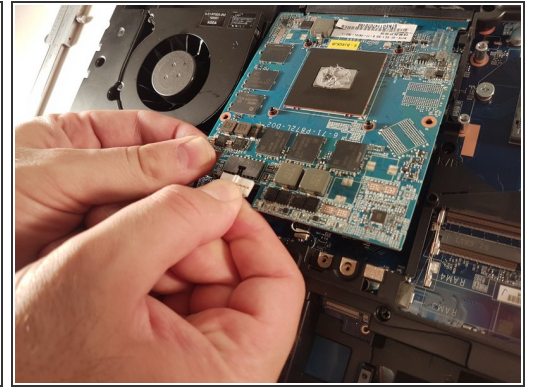
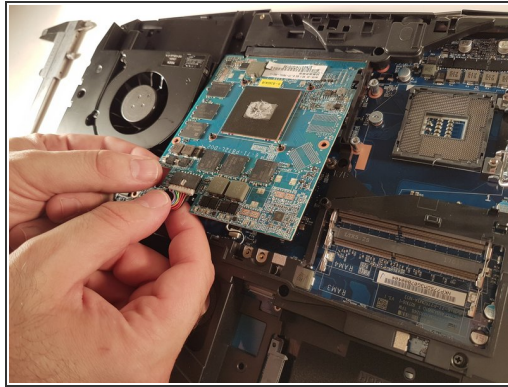
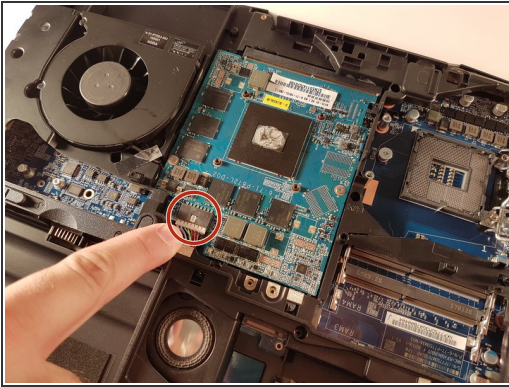
## Step 22 — Graphic card



- Unscrew the two screws circled in red

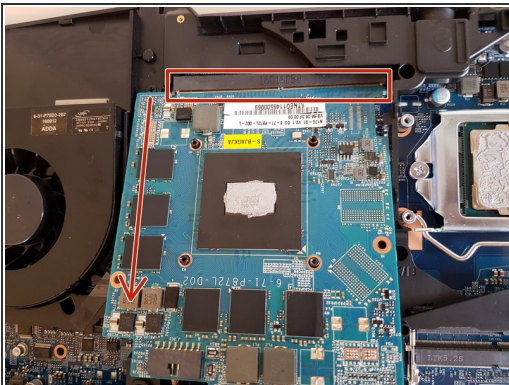


## Step 23



- Lift the card to allow access to the red circled connector
- Disconnect the red circled connector

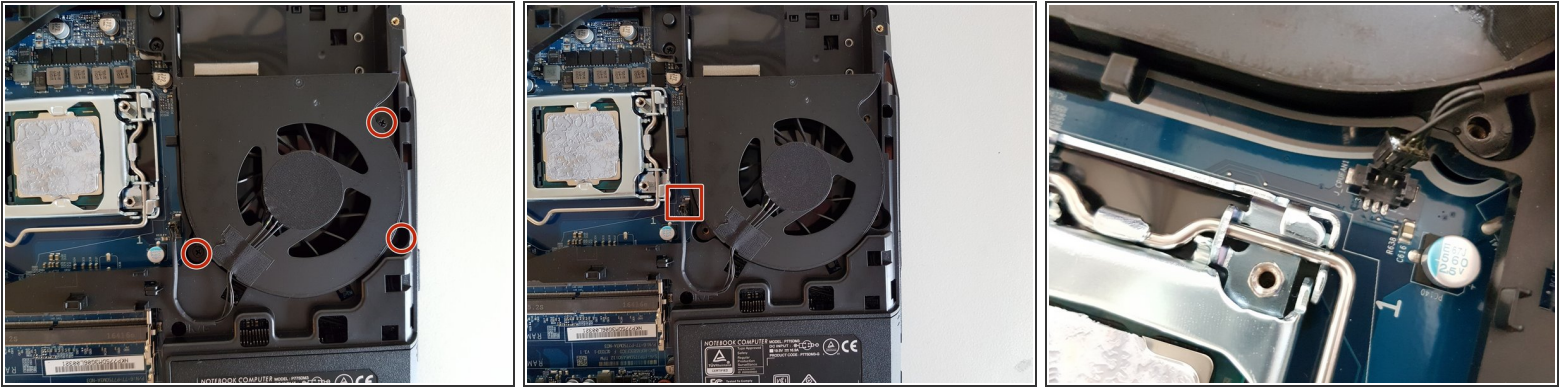
## Step 24



- Pull it in the direction of the red arrow



## Step 25 — Fans



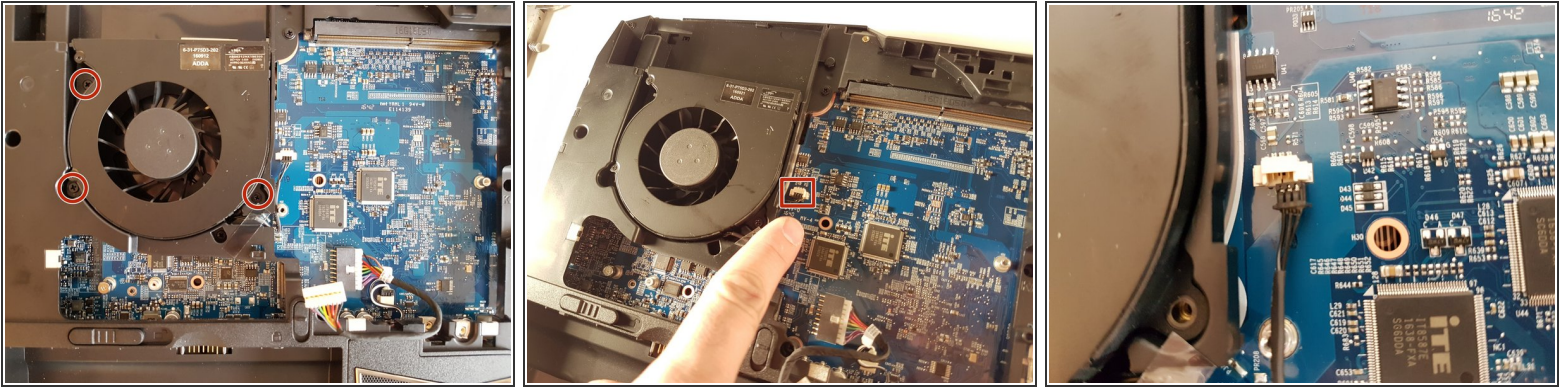
- Unscrew the three screws circled in red
- Disconnect the framed connector in red

## Step 26



- Remove the fan

## Step 27



- Unscrew the three screws circled in red
- Disconnect the framed connector in red

## Step 28



- Lift the fan

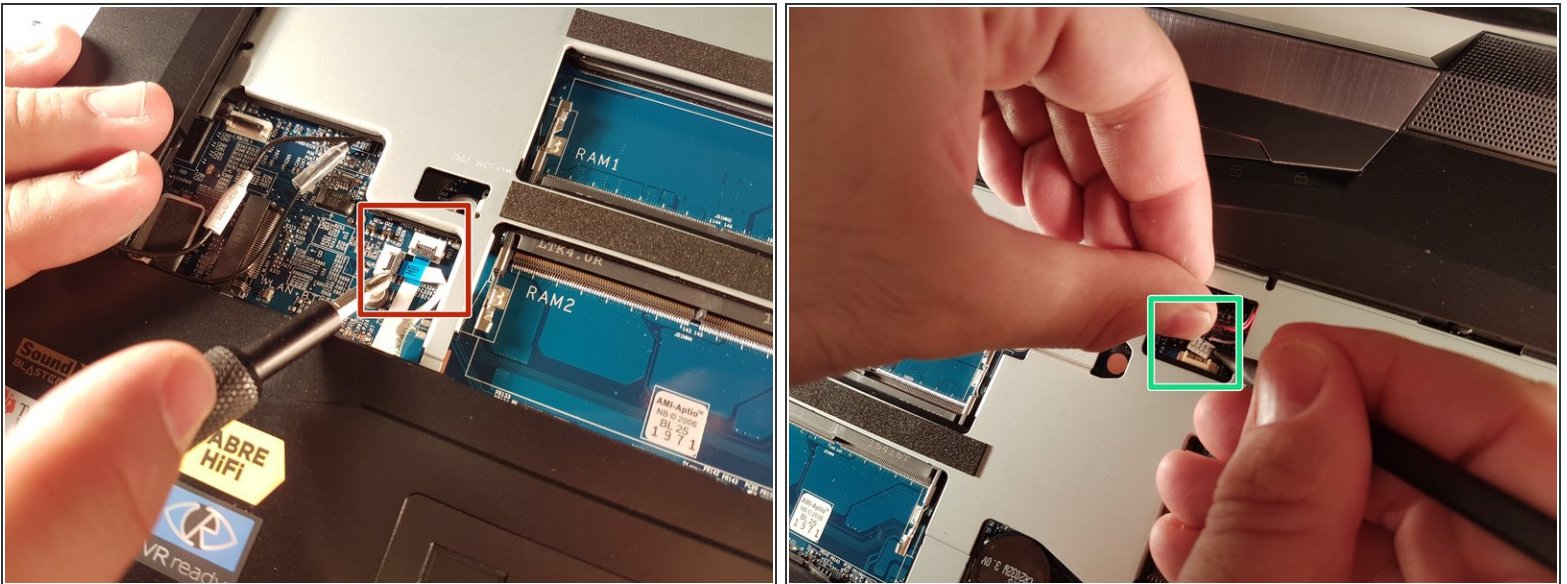


## Step 29 — The motherboard



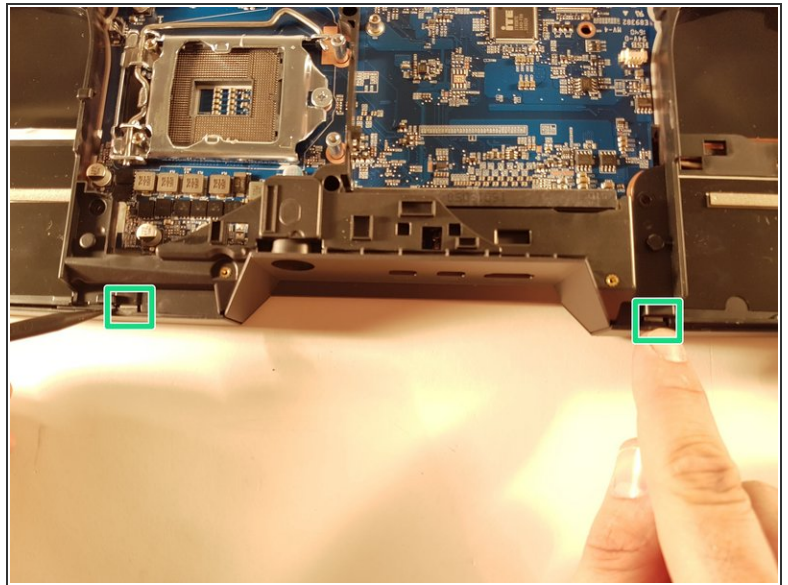
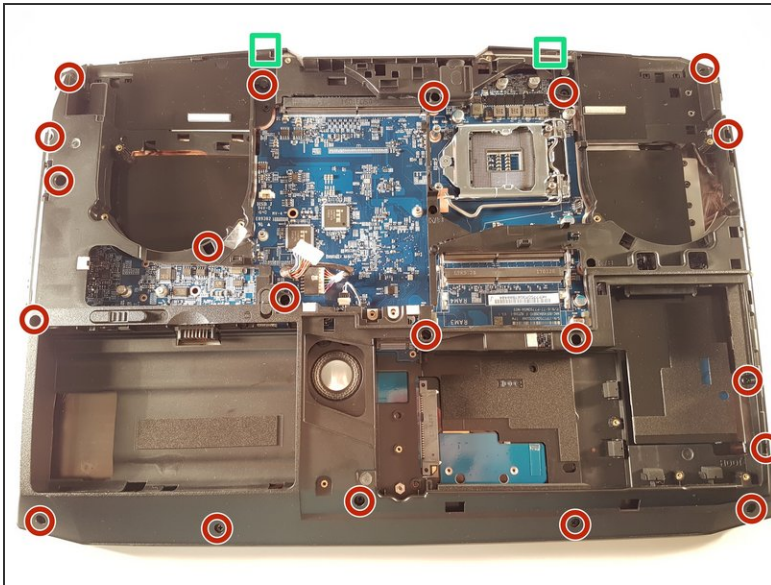
- Lift the flap that holds the two connectors framed in red
- Disconnect the two framed connectors in red

## Step 30



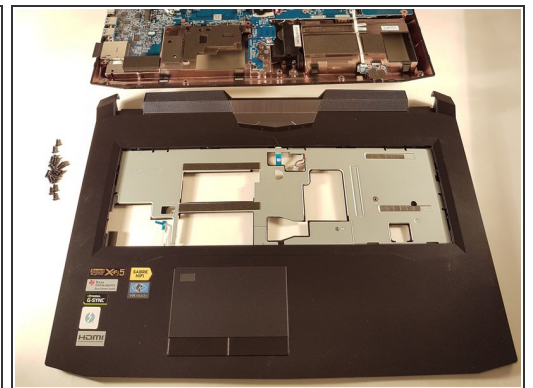
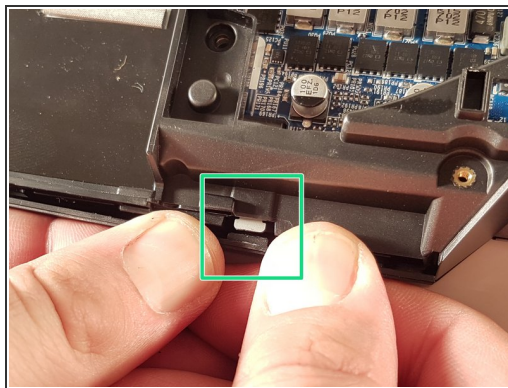
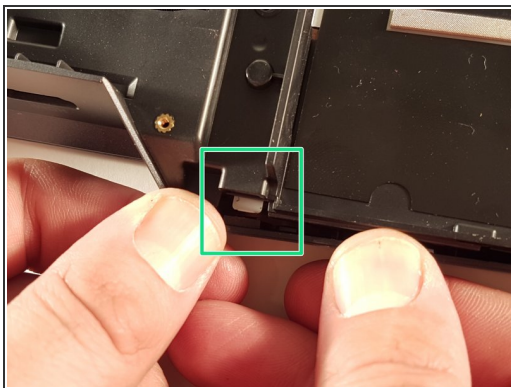
- Lift the flap that holds the two connectors framed in red
- Disconnect the two framed connectors in red
- Disconnect the box connector in green

## Step 31



- Unscrew the twenty screws circled in red
- Unclip the edge of the case at the two places framed in green

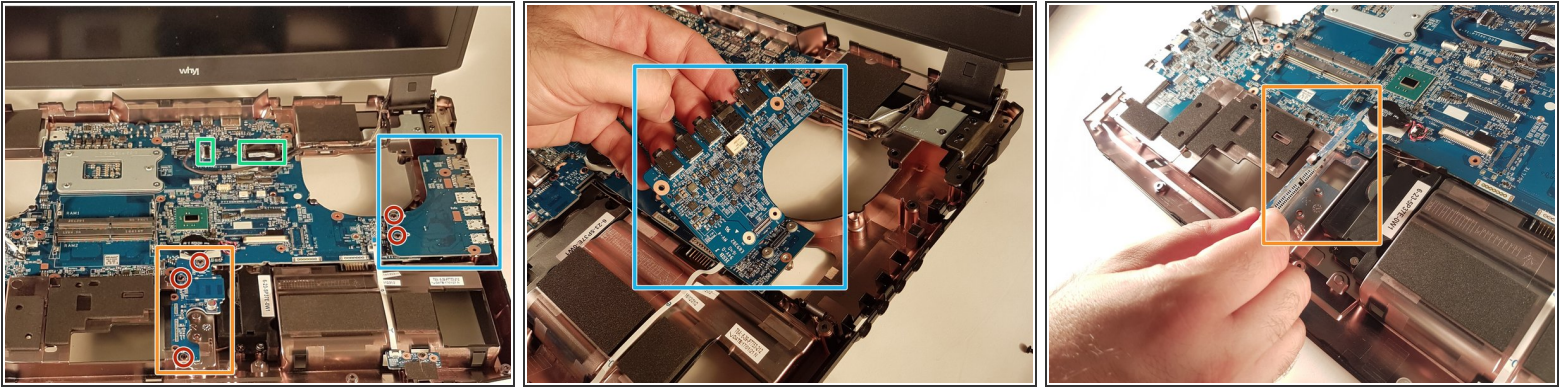
## Step 32



- Unclip the edge of the case at the two places framed in green
- Remove the top of the case

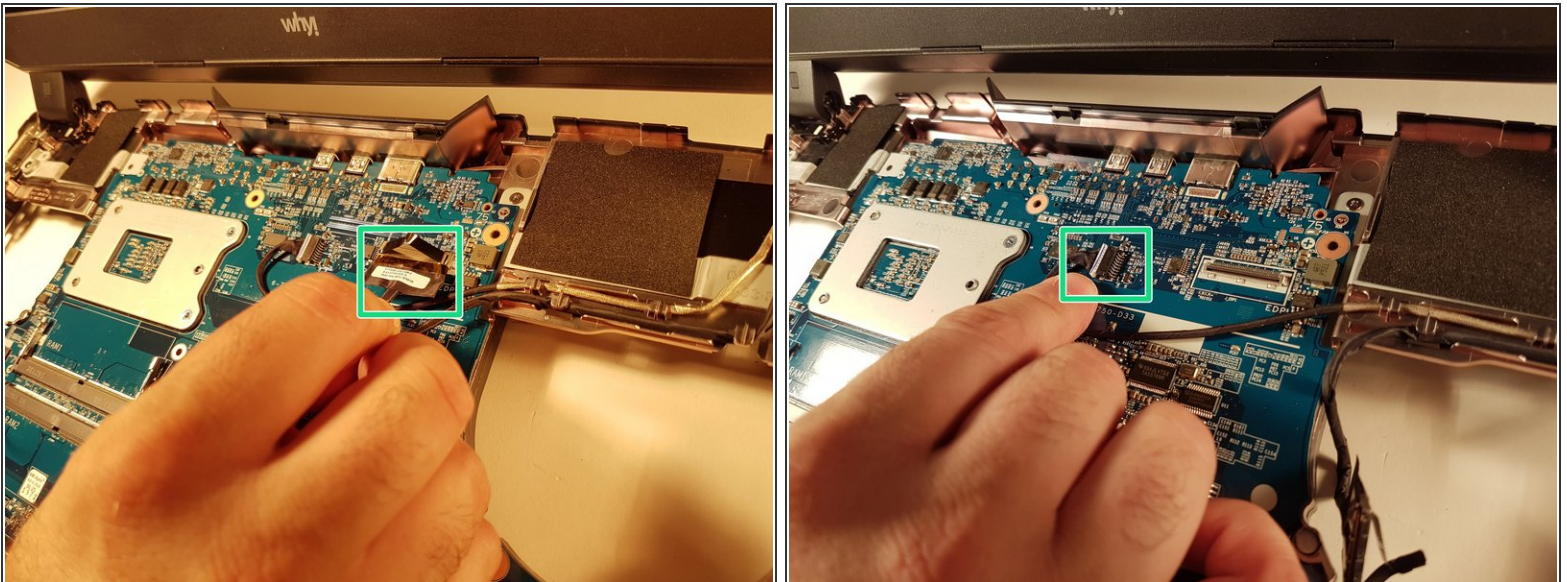


## Step 33



- Unscrew the five screws circled in red
- Remove the framed card in blue
- Remove the framed card in orange

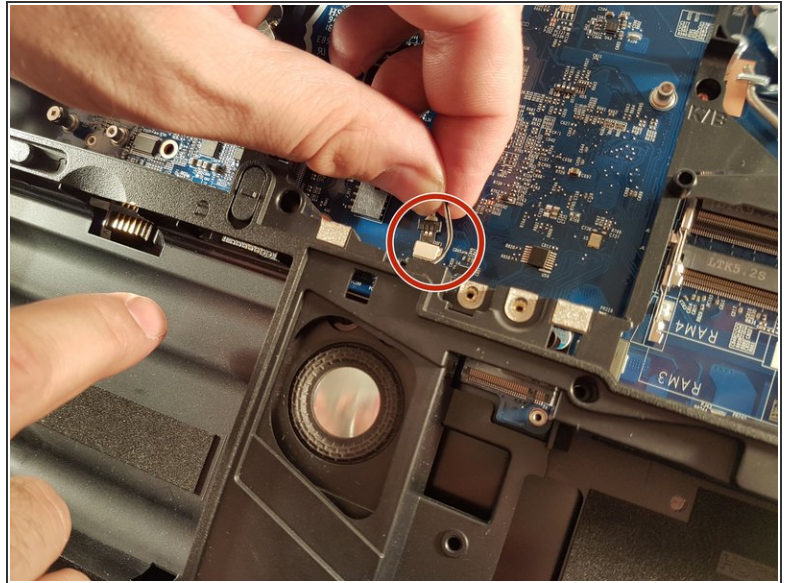
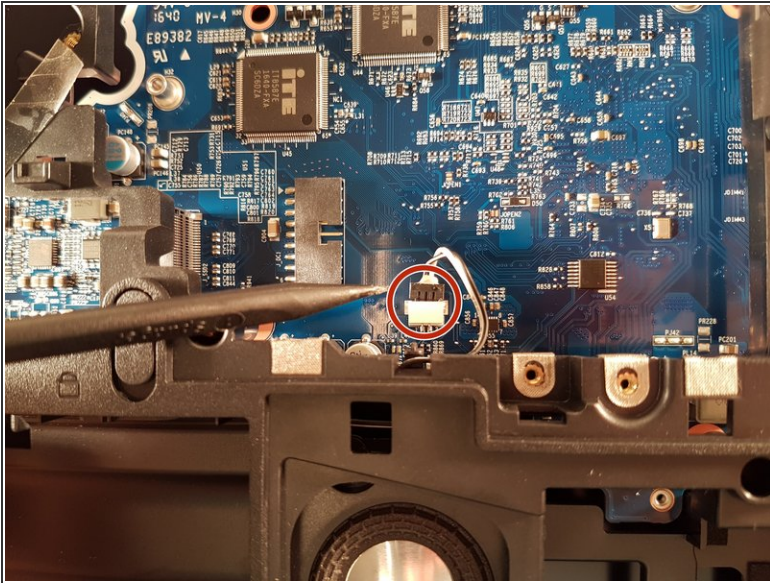
## Step 34



- Disconnect the two framed connectors in green

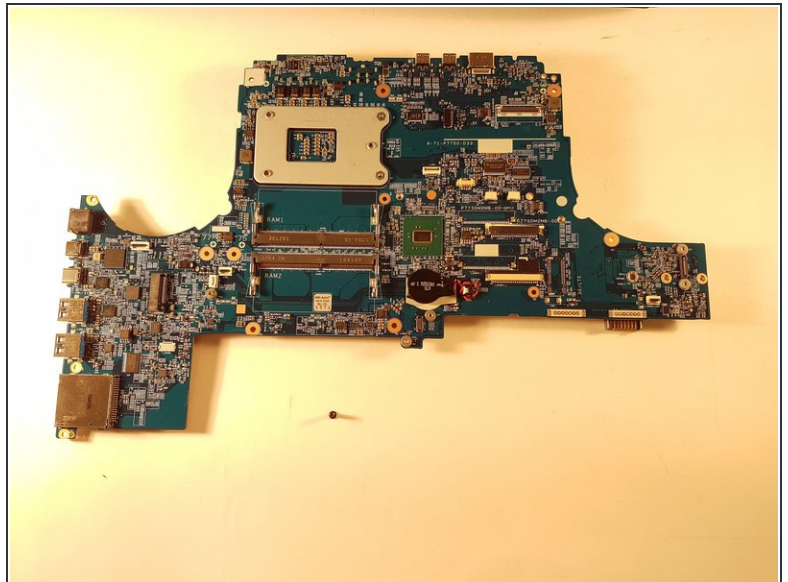
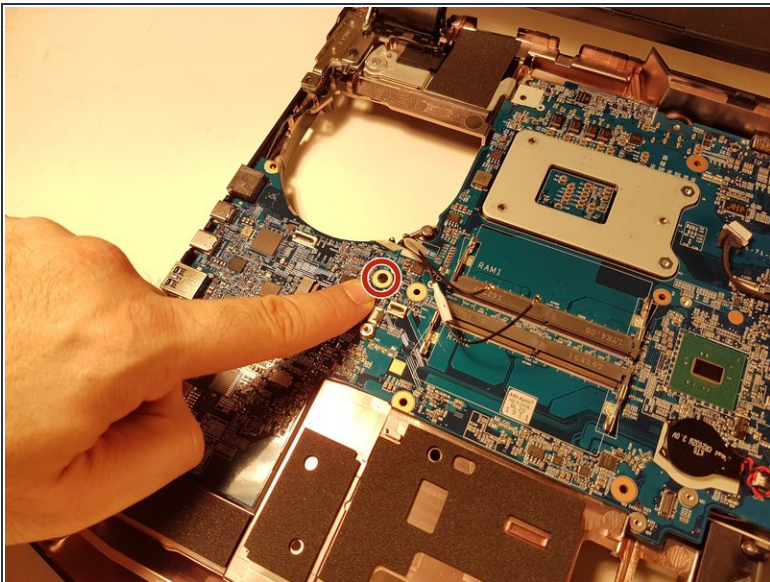


## Step 35



- Disconnect the red circled connector

## Step 36



- Unscrew the screw circled in red
- Remove the motherboard



To reassemble your device, follow the instructions in reverse order.