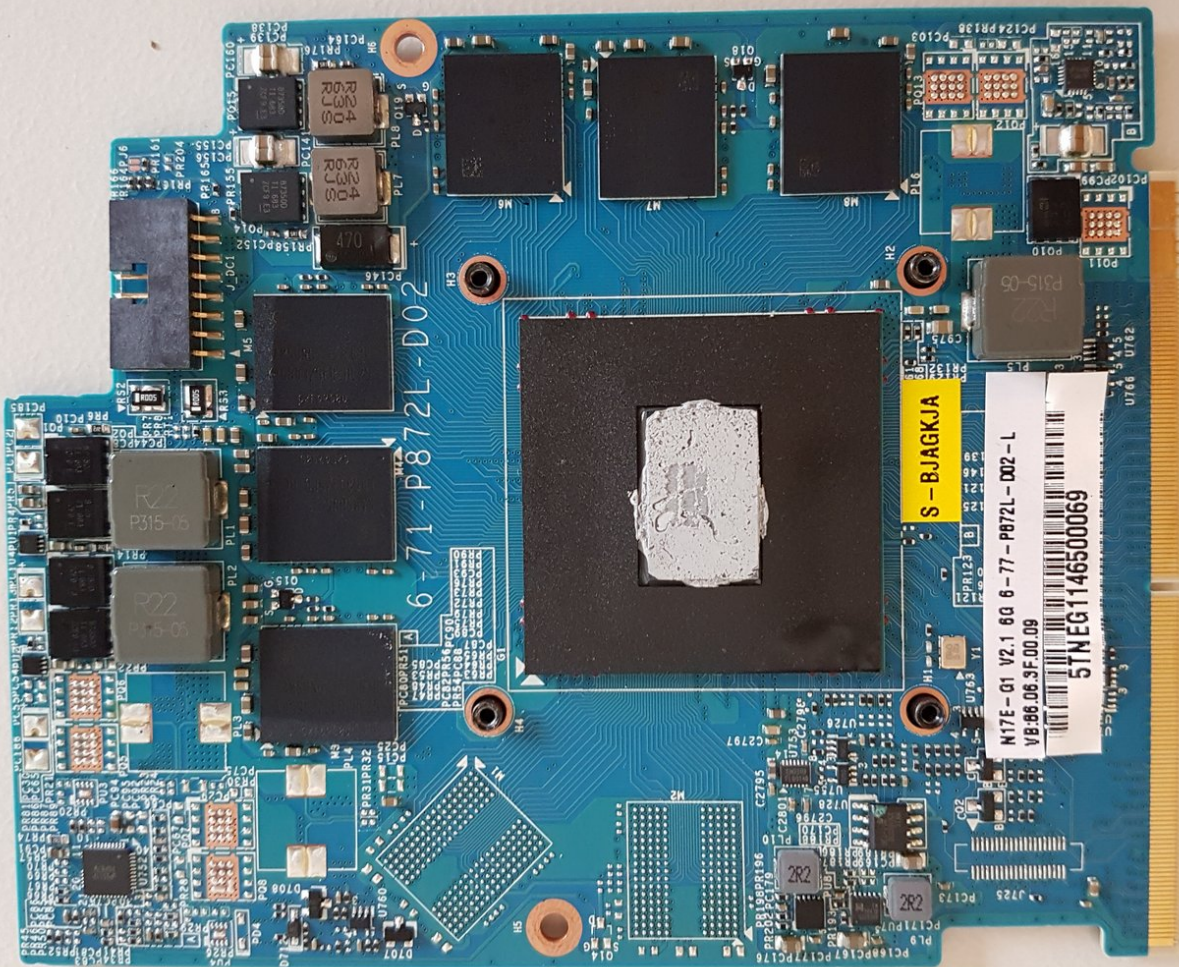




# P775DM3 Replacement of the Graphic card

Written By: Felice Suglia



**TOOLS:**

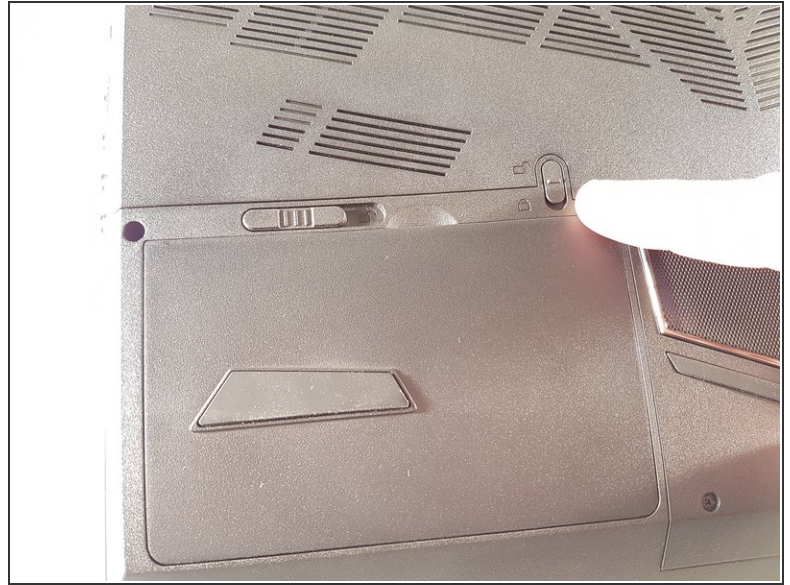
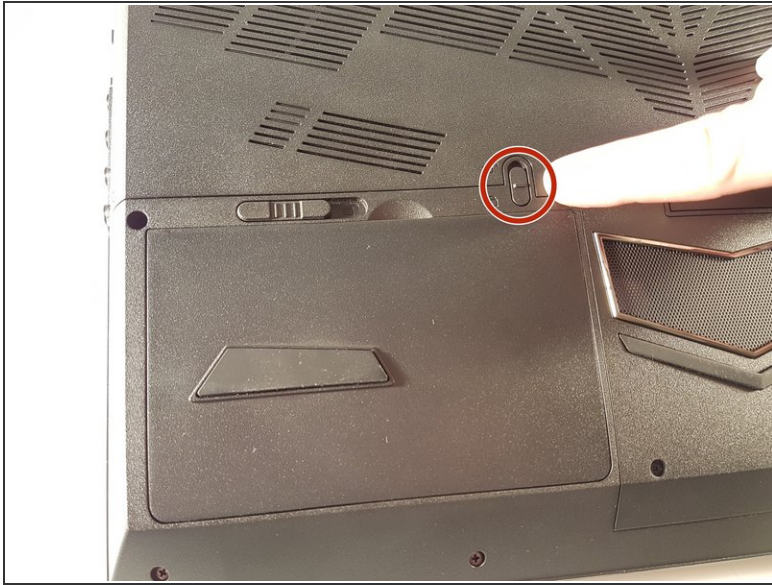
- [Phillips #0 Screwdriver](#) (1)

**PARTS:**

- [New Item](#) (1)
- [New Item](#) (1)



## Step 1 — Battery



- Unlock the lock marked in red.

## Step 2



- Lift up the battery while unlocking the lock marked in red.

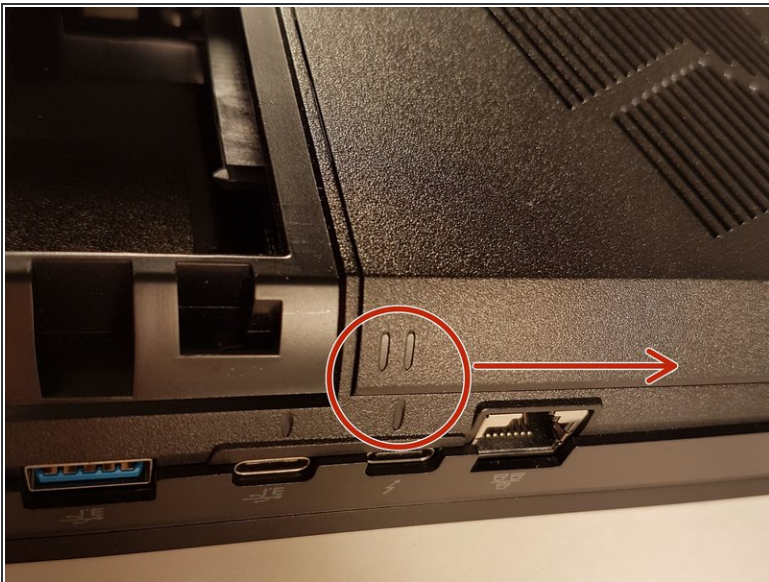


### Step 3 — Access to major components



- Unscrew the five screws circled in red

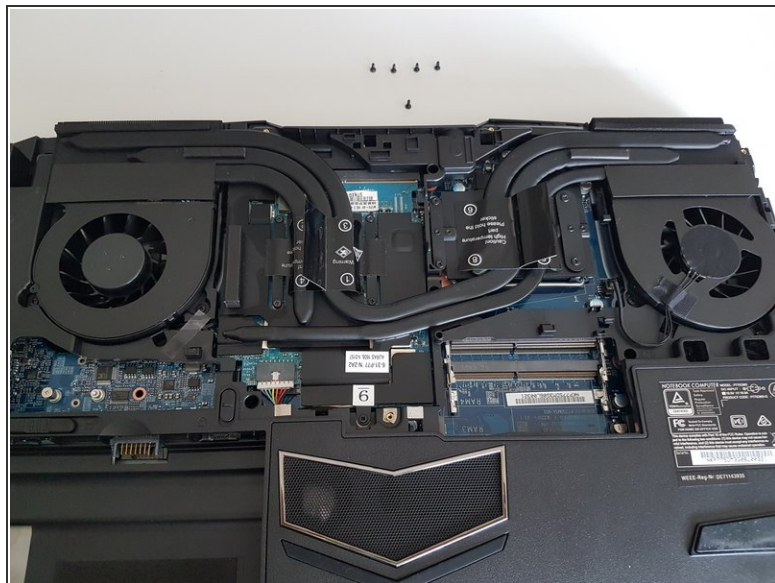
### Step 4



- Slide the plate in the direction of the red arrow

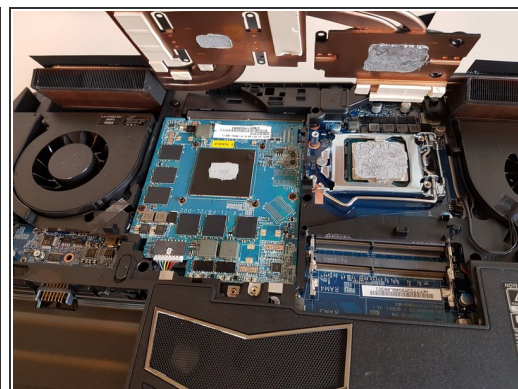
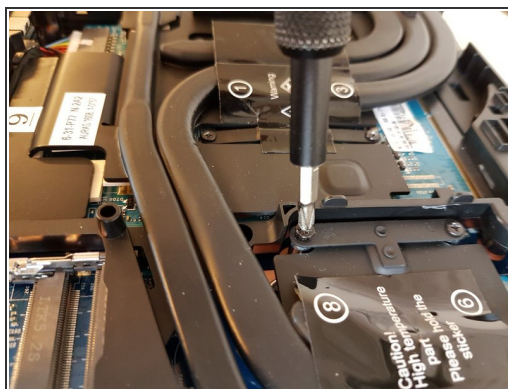
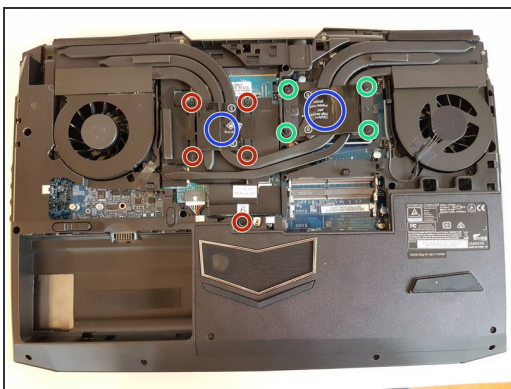


## Step 5



- Lift the plate

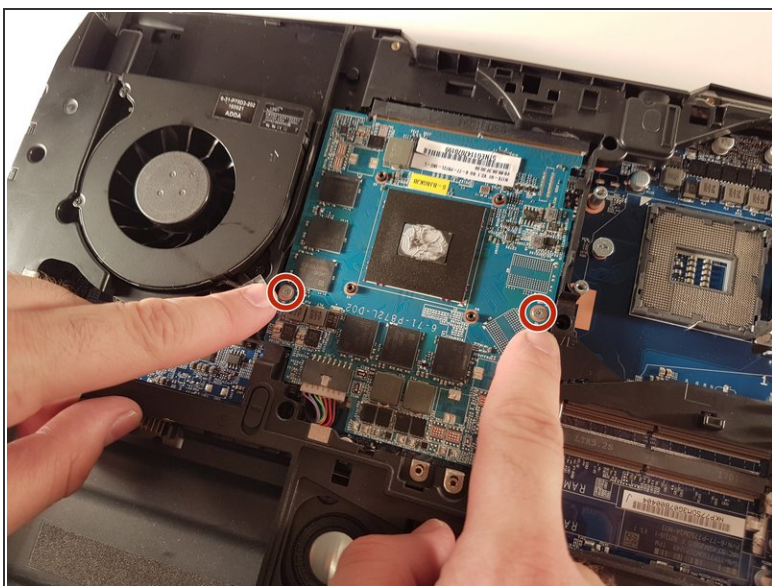
## Step 6 — The cooler



- Unscrew the four large screws circled in green
- Unscrew the five small screws circled in red
- Lift the cooler with the two tabs circled in blue

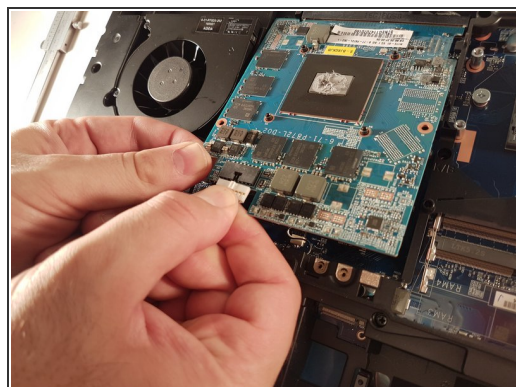
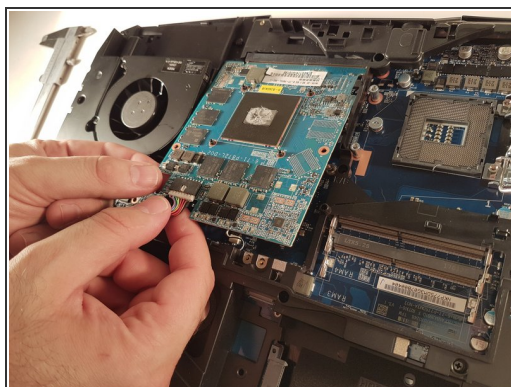
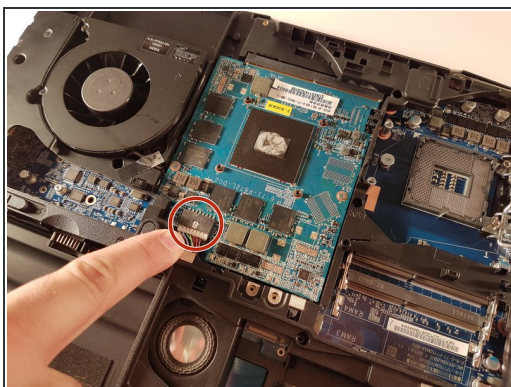


## Step 7 — Graphic card



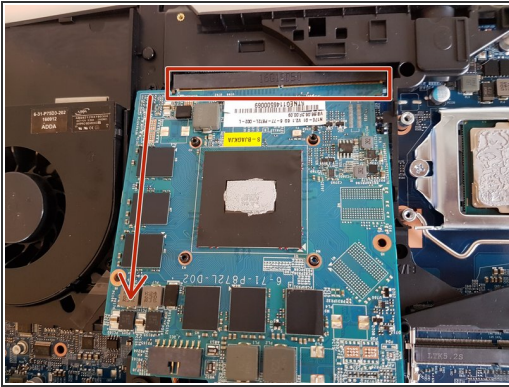
- Unscrew the two screws circled in red

## Step 8



- Lift the card to allow access to the red circled connector
- Disconnect the red circled connector

## Step 9



- Pull it in the direction of the red arrow

To reassemble your device follow the following instructions in reverse order