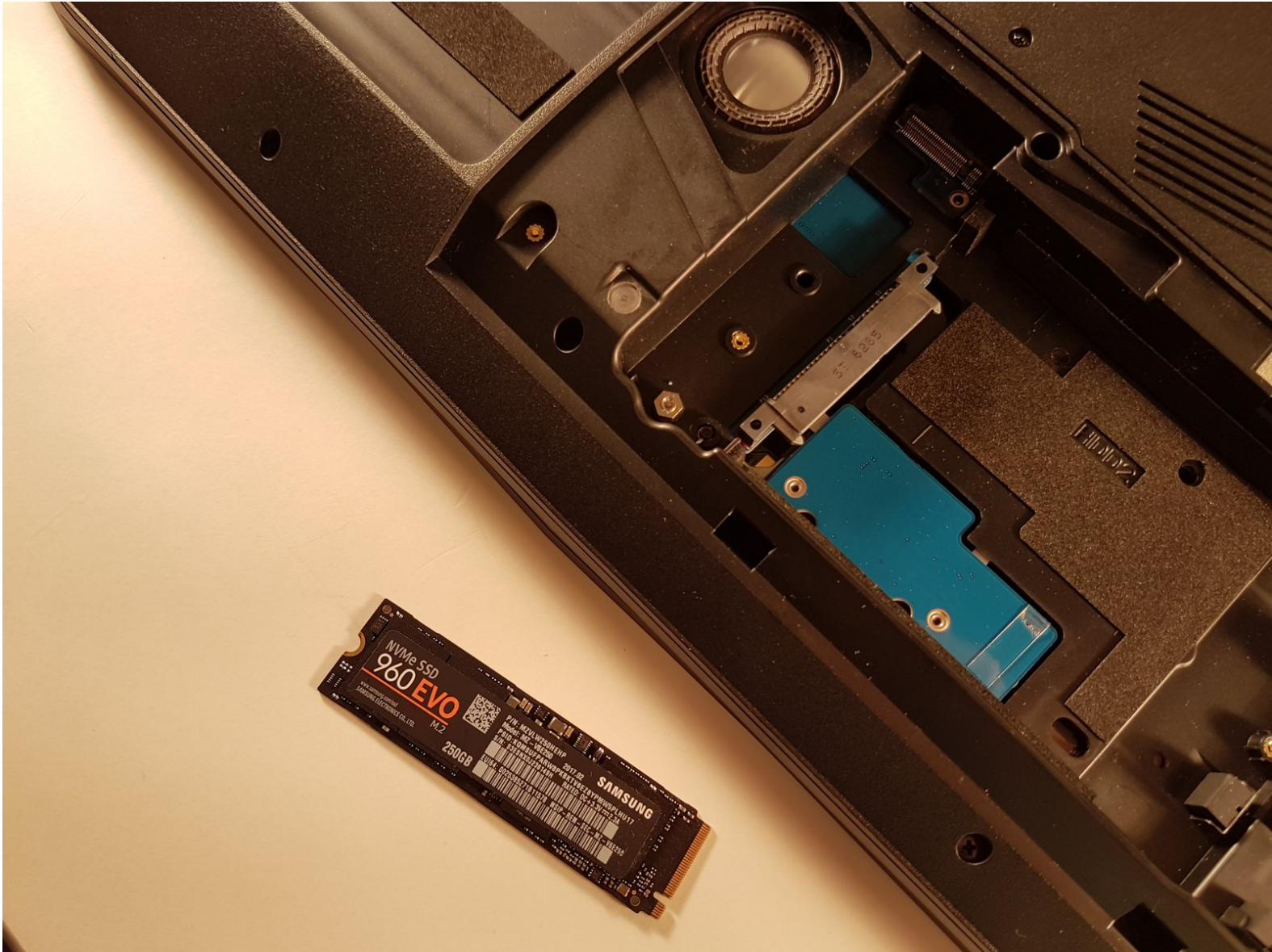




P775DM3 Replacing SSD M.2 Disk

Written By: Felice Suglia





TOOLS:

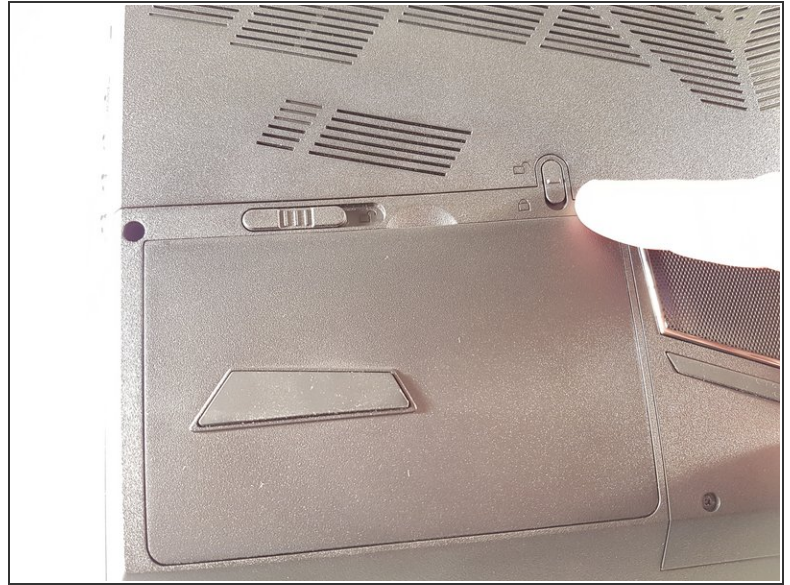
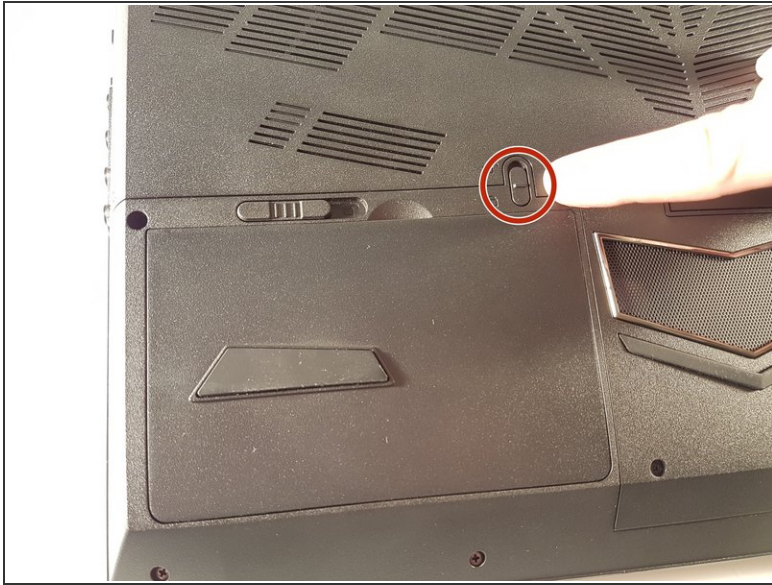
- [Phillips #0 Screwdriver](#) (1)



PARTS:

- [New Item](#) (1)
- [New Item](#) (1)

Step 1 — Battery



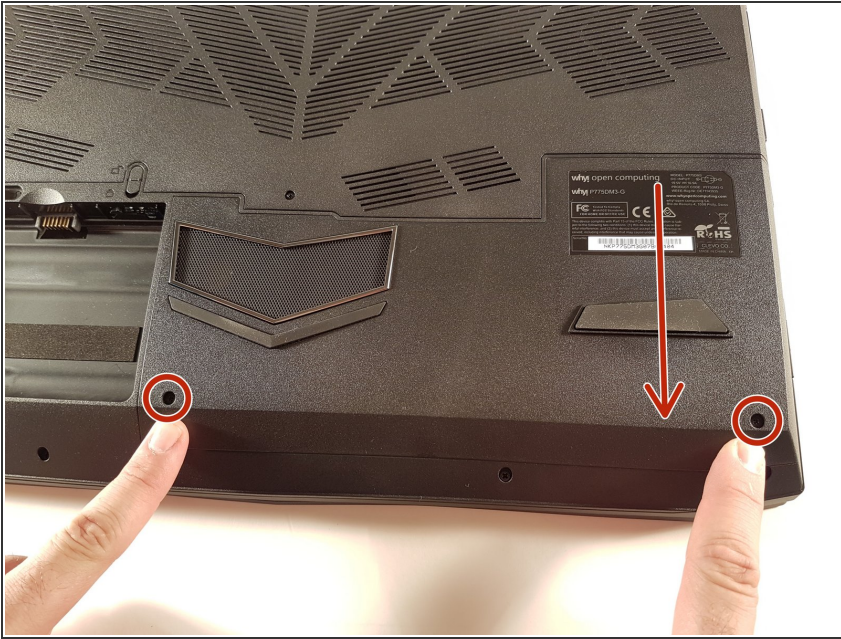
- Unlock the lock marked in red.

Step 2



- Lift up the battery while unlocking the lock marked in red.

Step 3 — Disk access



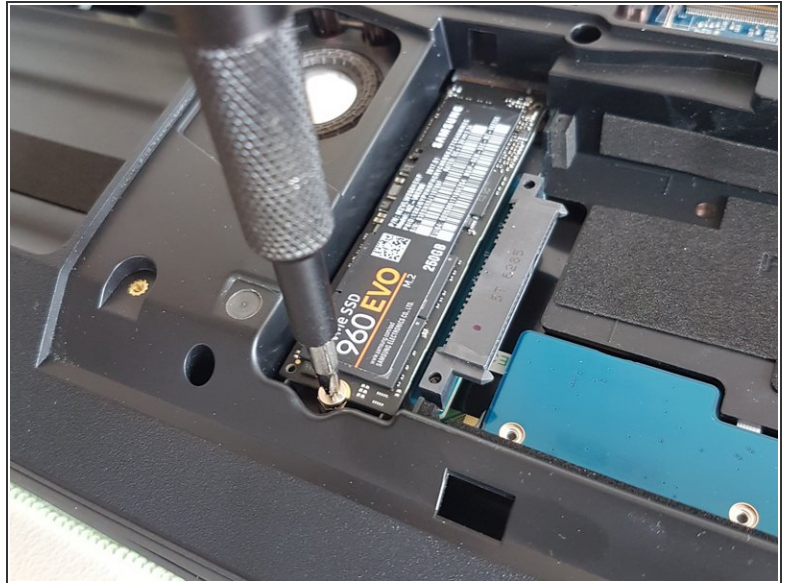
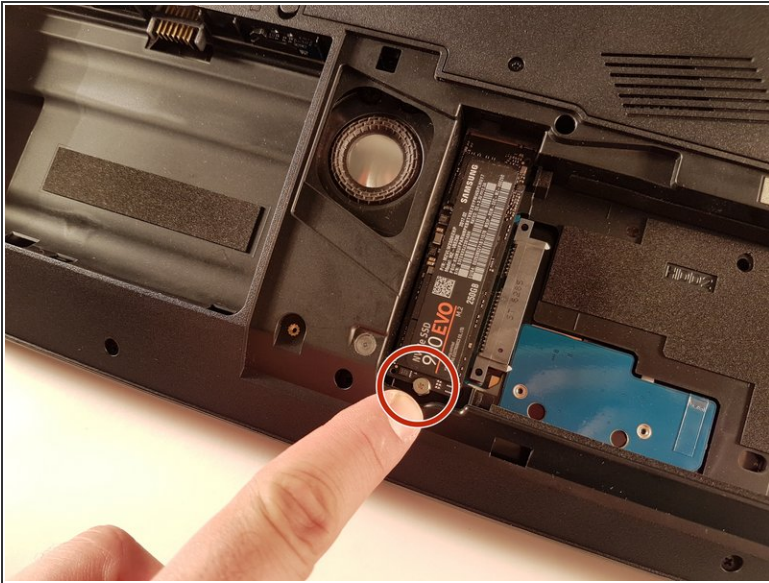
- Unscrew the two screws circled in red
- Slide the plate in the direction of the arrow

Step 4



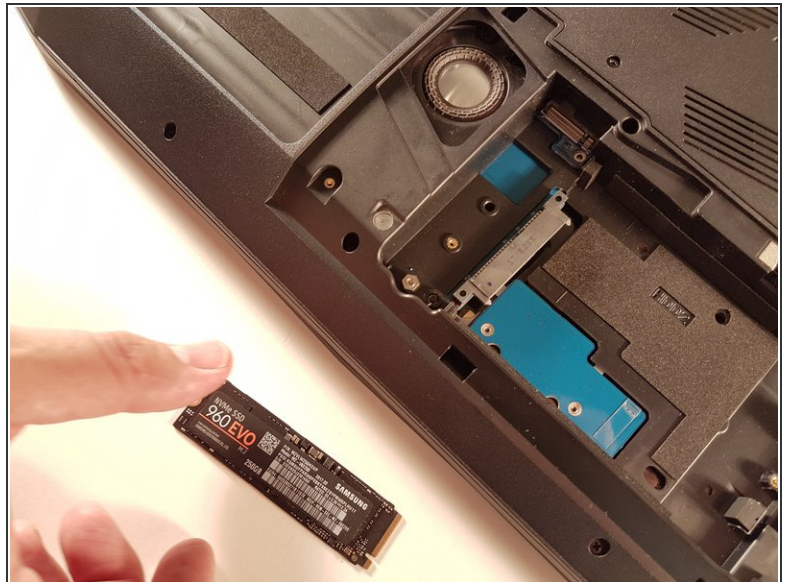
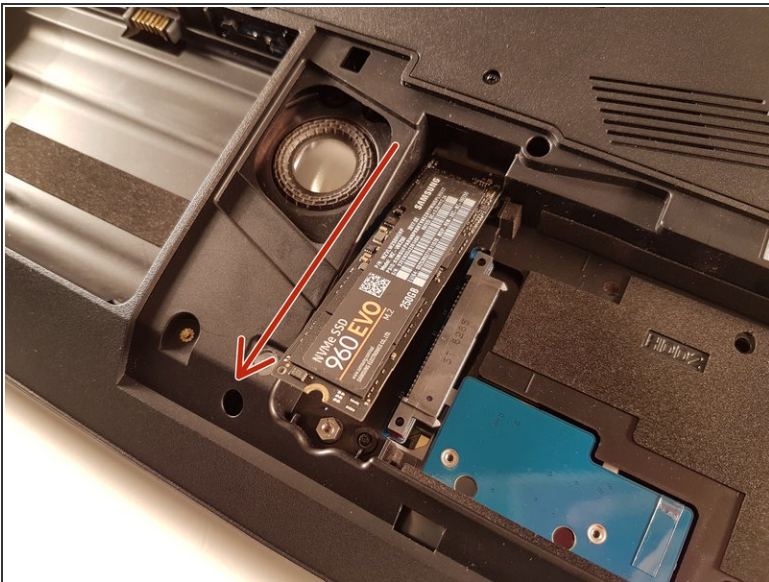
- Lift the plate

Step 5 — Replacing SSD M.2 Disk



- Unscrew the screw circled in red

Step 6



- Pull the SSD in the direction of the red arrow

To reassemble your device follow the following instructions in reverse order