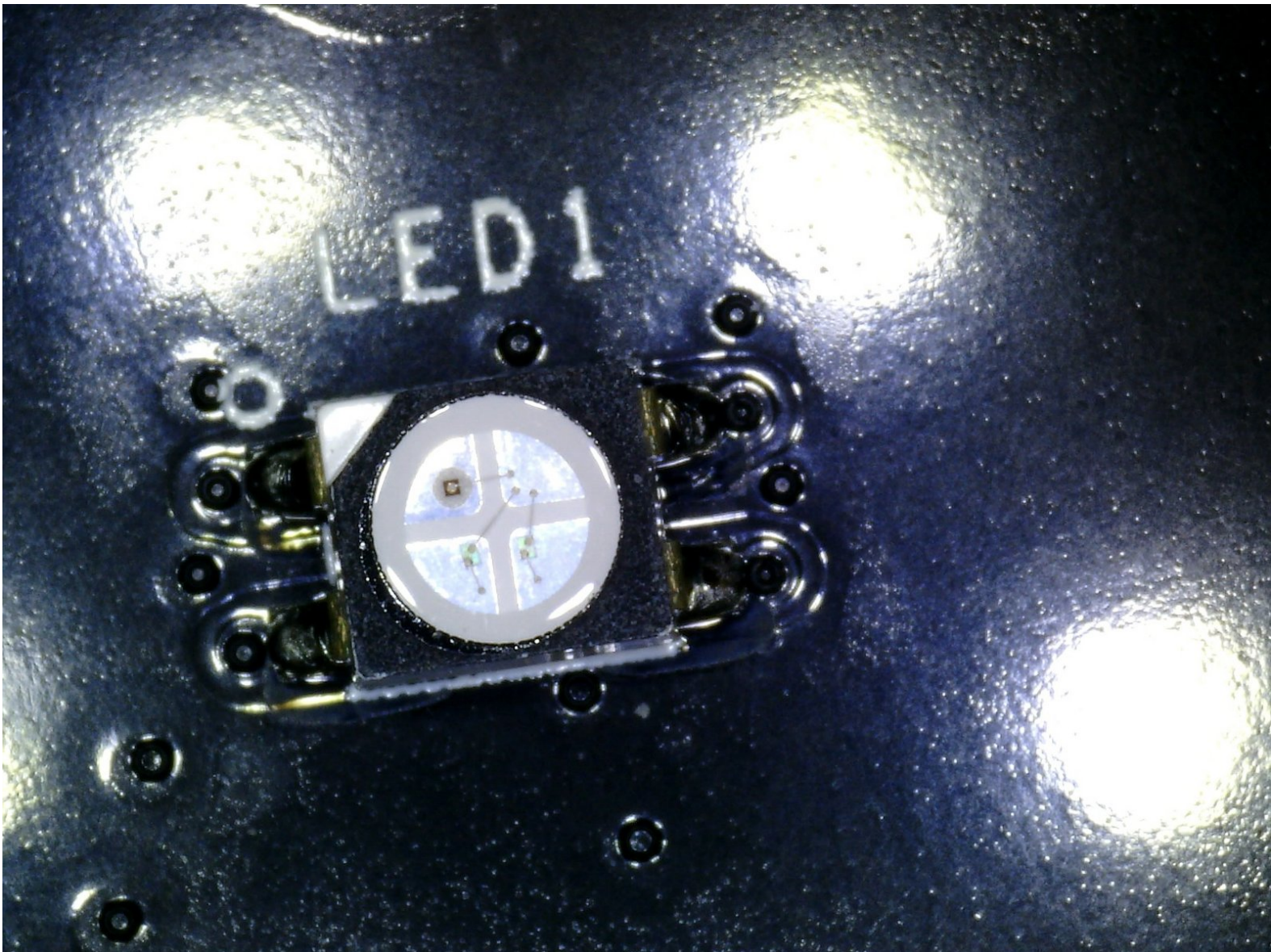




# PDP Afterglow Fener LED Replacement

In this guide I am going to teach you how to replace your broken LED.

Written By: Thomas Williams



## INTRODUCTION

First we are going to take apart the headset to get to the LED. Then we are going to use our helping hands and soldering iron to remove the old LED and put the new LED in. **WARNING advanced soldering skills needed.**



### TOOLS:

- [Portable Soldering Iron](#) (1)
- [helping hands](#) (1)
- [Phillips #000 Screwdriver](#) (1)



### PARTS:

- [Replacement LED](#) (1)

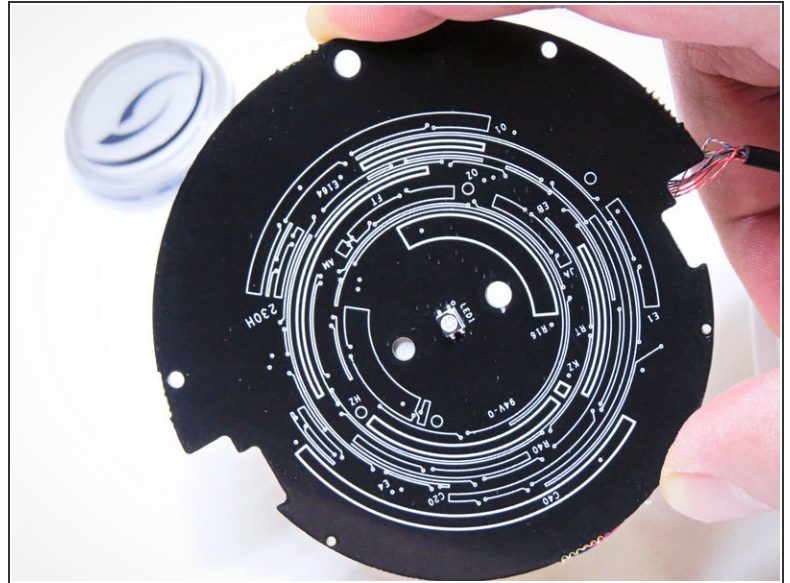
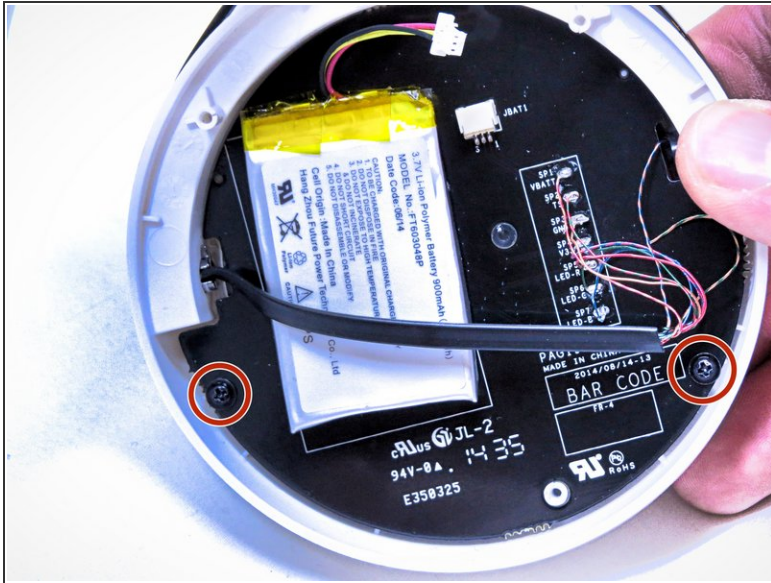
## Step 1 — LED



- Gently pull off your left and right ear pad. For further instructions on how to carefully do this please go to this guide [here](#).
- For each of the red circled screws, take your J000 screwdriver and unscrew the screws.
- This is a picture of what your headset looks like now that you have done the first two steps and have removed the part that you unscrewed.

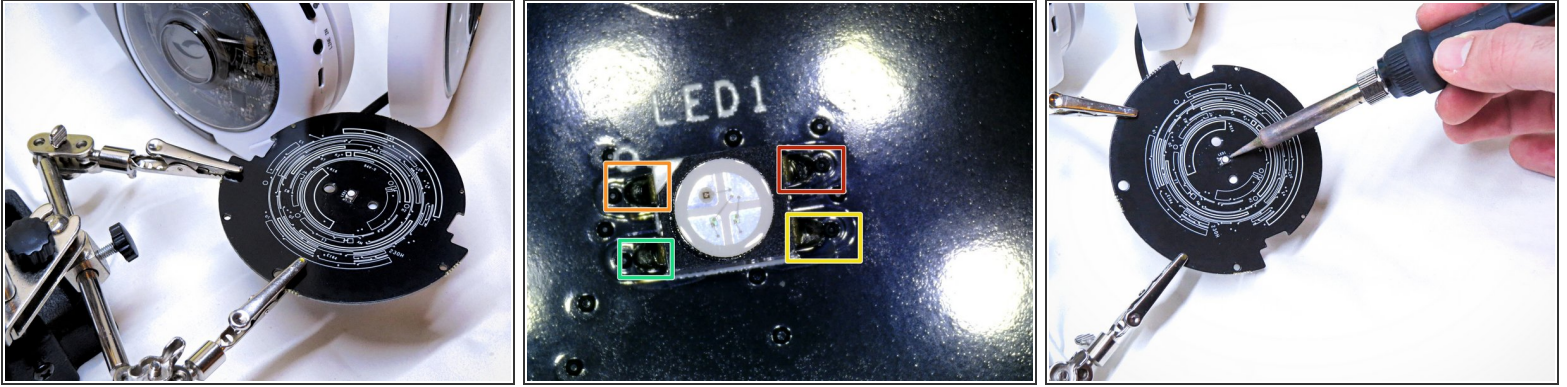


## Step 2



- First remove the battery from the headset, for instructions on how to do this correctly go [here](#)
- Now take your J000 screwdriver and unscrew the screws that have a red circle around them.
- Now remove the circuit board from the headset and flip it to the other side to be able to see the light/LED.

## Step 3



- Take your helping hand with alligator clips and put the printed circuit board on it.
- This picture is a close up of the LED with the highlighted areas you need to unsoldered.
- Now take your soldering iron and unsolder those four highlighted areas.
- Your LED should come loose and you can now put on your new LED.

To reassemble your device, follow these instructions in reverse order.